



Configuring HiVision 6.0 and HiMobile 2.0 for remote monitoring from an Apple OS device.

HiMobile is an app for Apple OS devices that will allow remote monitoring of HiVision. The following guide assumes a basic understanding of HiVision and requires a preconfigured network and topology.

Topics

HiVision Configuration for HiMobile.....	2
HiMobile Install and Configuration	6

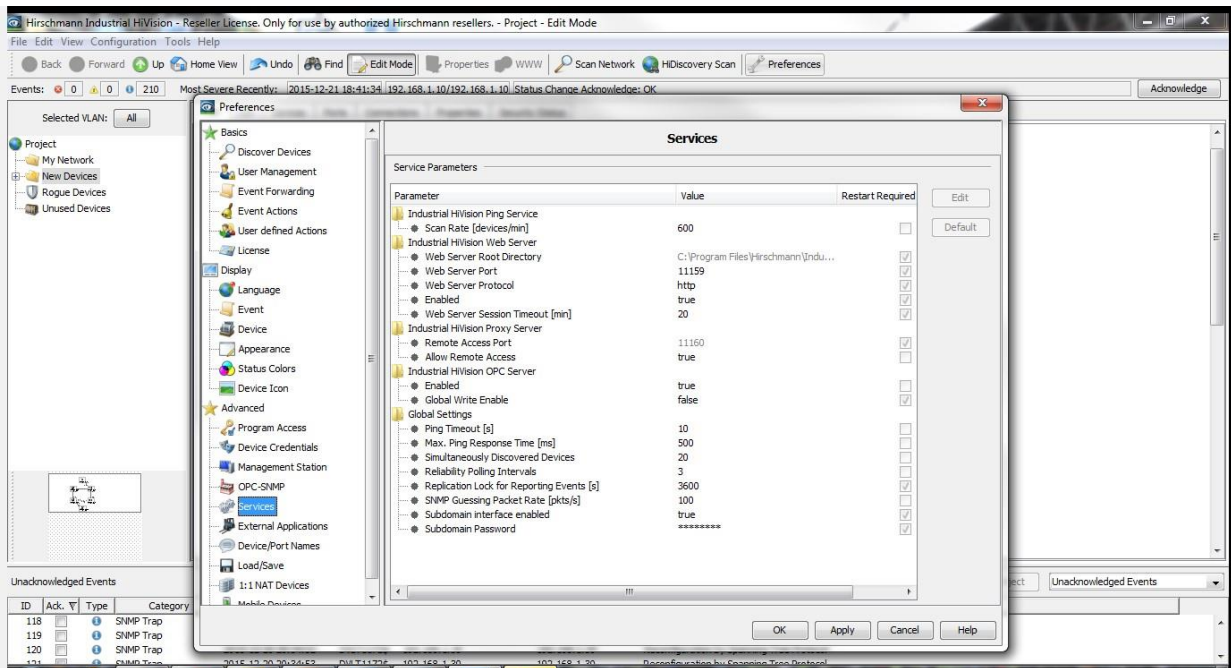
Featured Brands



Configuring HiVision for HiMobile

This guide will provide the steps to prepare HiVision to be monitored remotely by HiMobile.

Step 1: Open the **Preferences** window.



Step 2: Open the **Advanced** -> **Services** section.

Step 3: Enable the webserver and remember the Web Server Port (default 11159)

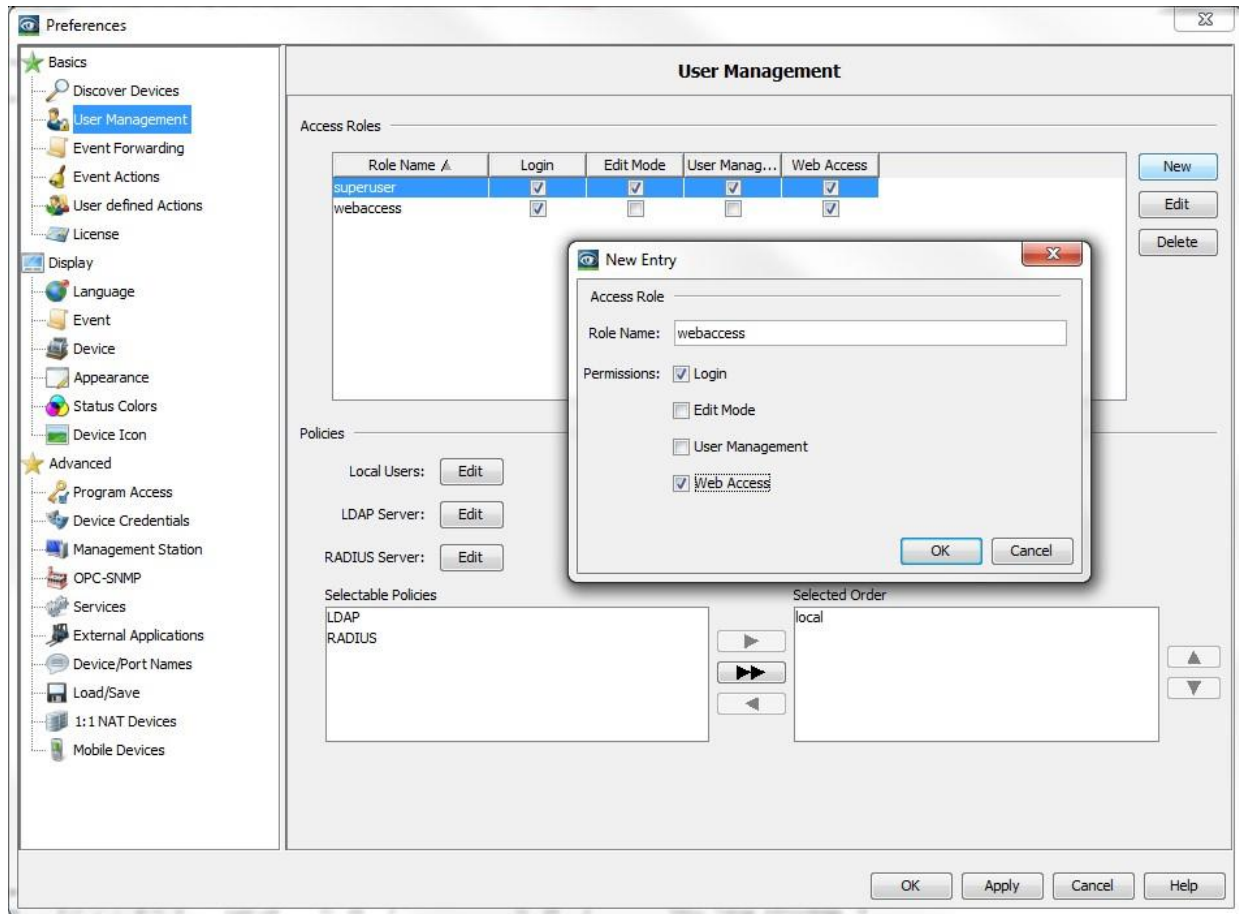
Step 4: The Industrial HiVision Proxy Server -> Allow Remote Access must be set to "true".

Step 5: Click "Apply"

Step 6: Open the **Basics** -> **User Management** section.

Step 7: Create a local super user role with permission to access the user management.

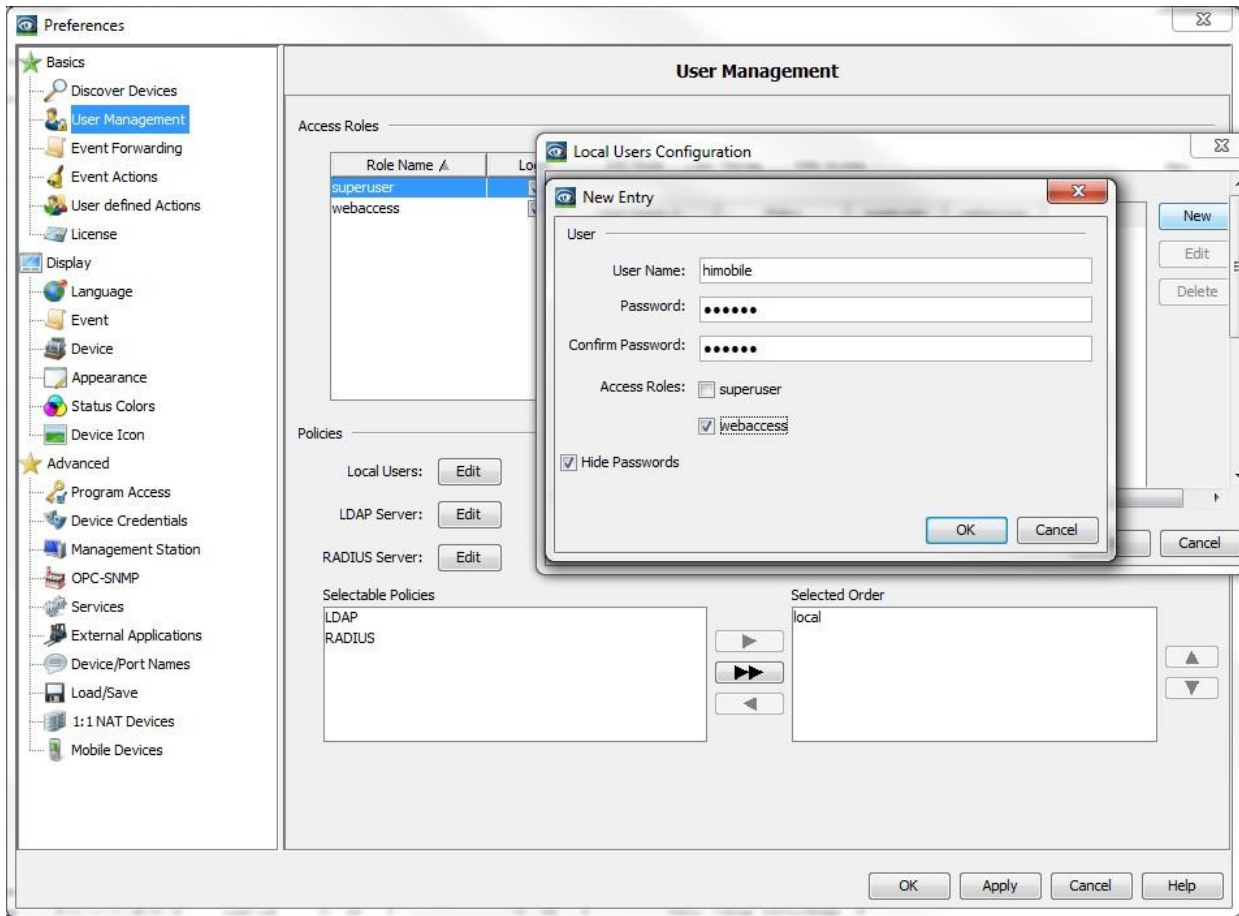
Step 8: Create a new access role for web access.



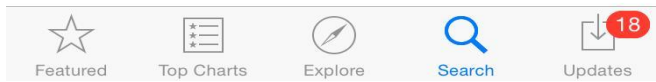
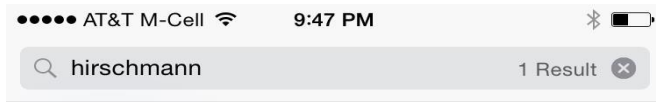
Step 9: Next to Local Users, click on Edit to modify.

Step 10: Create a new user and assign the access role of webaccess. Remember the name and password that you create.

Step 11: Specify the policy order for the user management. In the example below just “local” is the Selected Order



Step 12: Download HiMobile to your Apple OS device from the App Store.

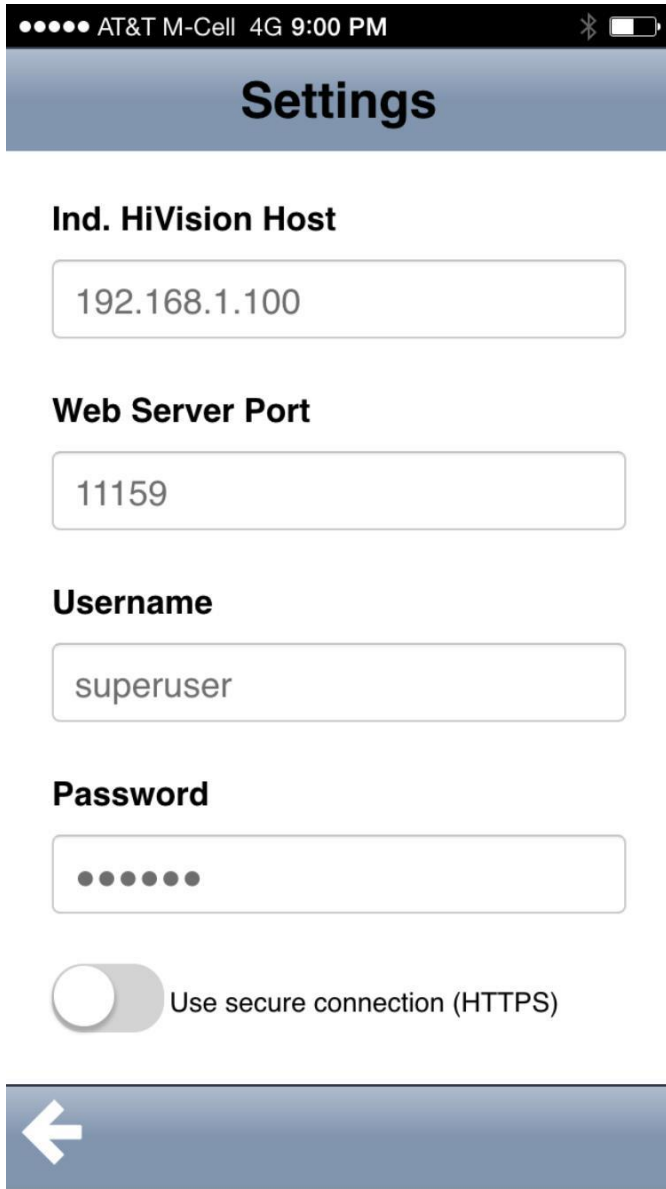


Step 13: Once installed open the app and open the settings located at the bottom right corner.

Step 14: Enter the IP Address of the PC/Server running HiVision.

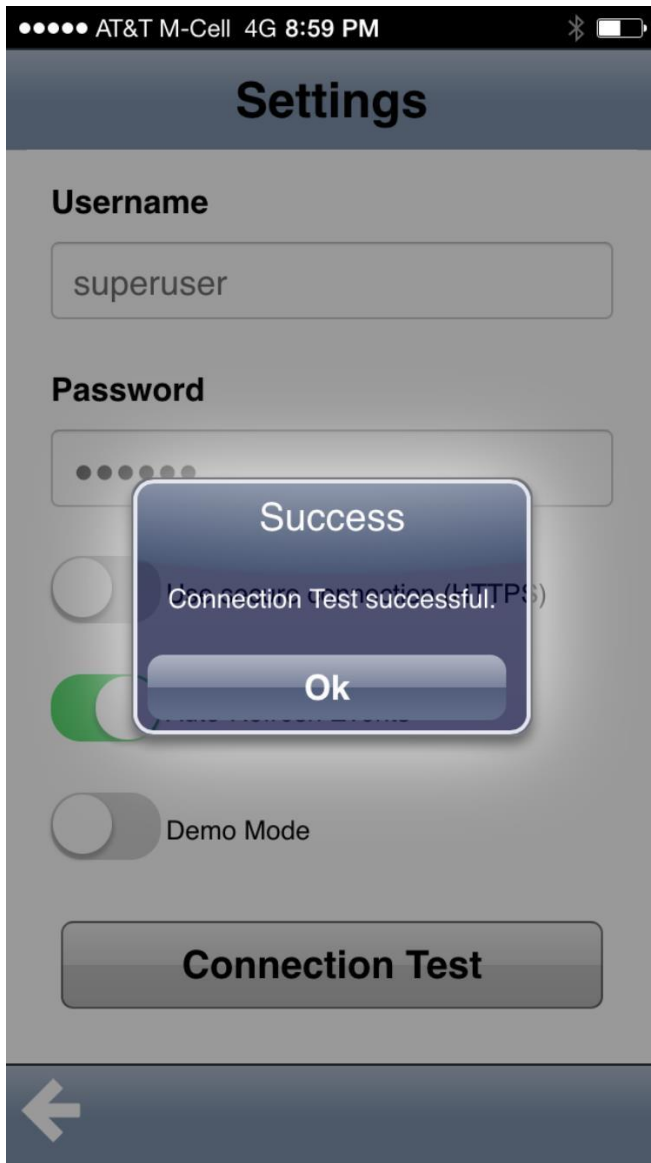
Step 15: Enter the Web Server port that was noted above from HiVision (default 11159).

Step 16: Enter the User Name and Password of a user with web access rights.



Step 17: Be sure the Apple Device is on a WIFI network and assigned an IP Address on the same subnet as the PC/Server running HiVision.

Step 18: Scroll down and press "Connection Test".



Step 19: Press the arrow to go back to the main menu and select the Network tab.

Step 20: Select the Project Folder.

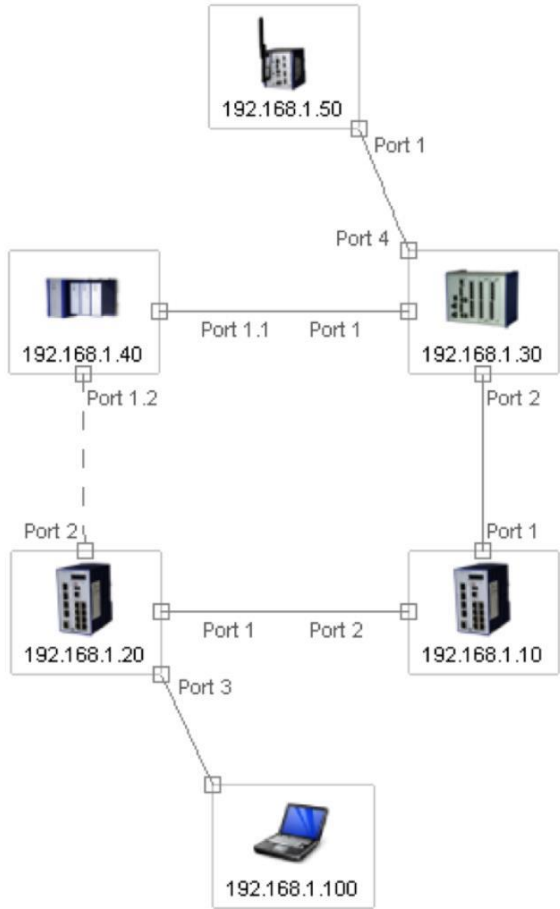
Step 21: Select the New Devices Folder.

You should notice a list of devices that are in your network.



Step 22: Notice the 3 dots in the top right corner. Press on them and in the drop down menu select "Display Map".

Step 13: Click "Save" button on the middle/right side of the window. (the radial button "to Device" is activated by default, this will right the configuration to the internal flash memory of the switch)



Congratulations! You can view the status of your network on your remote Apple device via HiMobile.