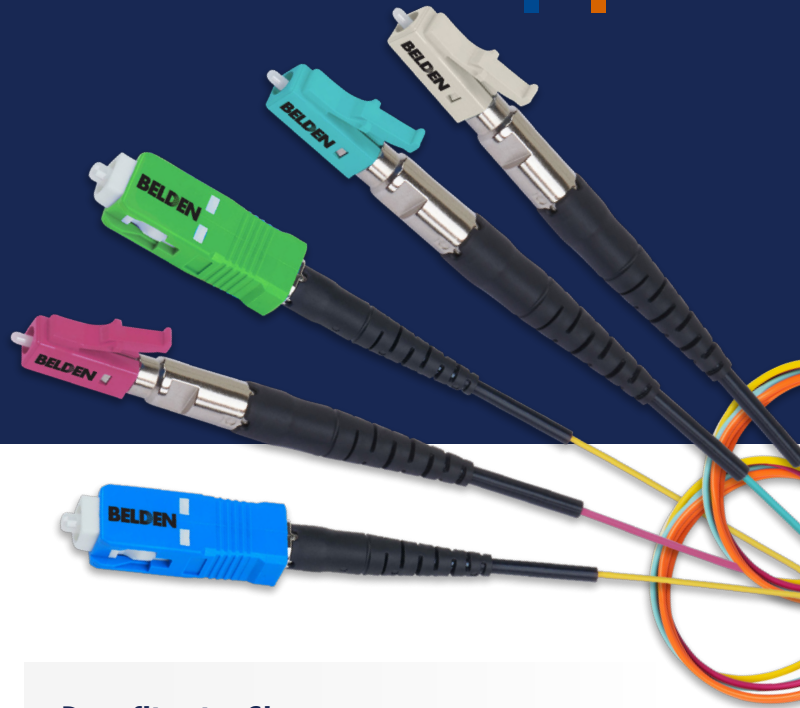


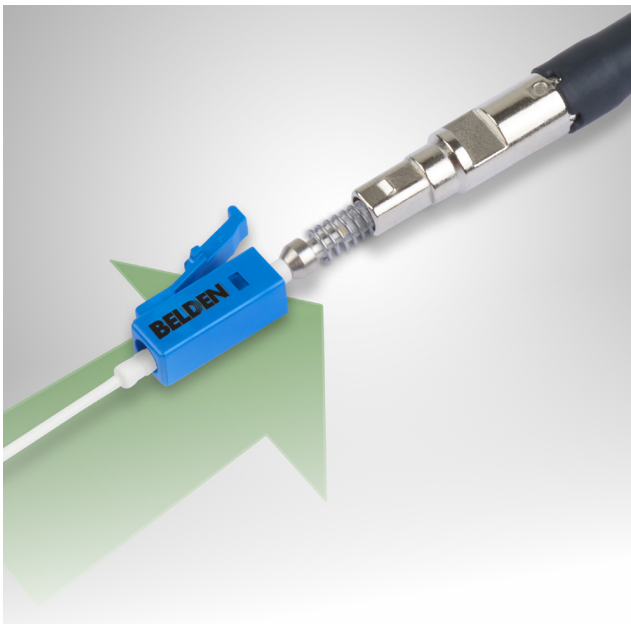
# FiberExpress Fusion Splice-On Connectors

PRODUCT BULLETIN 



## Excellent performance deployment with increased first-pass termination yield.

Belden's FiberExpress (FX) Fusion Splice-On connectors combine the benefits of fusion splicing with the simplicity of a field-installable connector to expand your options for field termination and improve installation performance and reliability over mechanical splice connectors. No crimping, polishing or adhesives are required for termination, minimizing installation errors.



## Benefits at a Glance

- Futureproofing to ensure networks and AV applications with high bandwidth and high-speed transmission
- Reduced hardware costs versus traditional pigtails
- Improved first pass yields
- Robust, reliable installation for indoor and outdoor environments
- Eliminates cable shorts and excess slack

## Key Features

- Fusion technology that delivers better insertion and return loss performance versus mechanical splice connectors
- Internally protected splice eliminates need for splice enclosures and splice trays
- Compatible splicer accessories
- Solutions for OM1, OM3, OM4, OS2 and OS2 APC meet ANSI/TIA-568-D3 and GR-326/1081 standards

## Key Applications

- Support high-bandwidth/high-speed transmission to 25G, 40G and 100G applications
- Available for 900um and 2mm jacketed field-termination of optical fiber cable

# Ordering Information

## FX Fusion Connectors



### FX Fusion Multimode Connectors

Description	Belden Part Number		
	OM1 (Beige)	OM3/OM4 (Aqua)	OM4 (Erika Violet)
LC with 900/250 μm Boot, 1/Pack	<b>FTILC900FS01</b>	<b>FT3LC900FS01</b>	<b>FT4LC900FS01</b>
SC with 900/250 μm Boot, 1/Pack	<b>FTISC900FS01</b>	<b>FT3SC900FS01</b>	<b>FT4SC900FS01</b>
LC with 2 mm Boot, 1/Pack	<b>FTILC2MMFS01</b>	<b>FT3LC2MMFS01</b>	<b>FT4LC2MMFS01</b>
SC with 2 mm Boot, 1/Pack	<b>FTISC2MMFS01</b>	<b>FT3SC2MMFS01</b>	<b>FT4SC2MMFS01</b>

FX Fusion Connectors with 2 mm boot are not compatible for termination on fanout kit.

### FX Fusion Singlemode Connectors

Description	Belden Part Number	
	OS2 (Blue)	OS2/APC (Green)
LC with 900/250 μm Boot, 1/Pack	<b>FTSLC900FS01</b>	<b>FTSLB900FS01</b>
SC with 900/250 μm Boot, 1/Pack	<b>FTSSC900FS01</b>	<b>FTSSB900FS01</b>
LC with 2 mm Boot, 1/Pack	<b>FTSLC2MMFS01</b>	<b>FTSLB2MMFS01</b>
SC with 2 mm Boot, 1/Pack	<b>FTSSC2MMFS01</b>	<b>FTSSB2MMFS01</b>

FX Fusion Connectors with 2 mm boot are not compatible for termination on fanout kit.

### FX Fusion Connectors *SmartPart* Configurator

FX Field Termination	1. Choose Fiber Type	2. Choose Connector	3. Choose Cable Type	4. Choose Product Family	5. Choose Packaging
<b>FT</b>	<b>3</b>	<b>LC</b>	<b>900</b>	<b>F</b>	<b>S01</b>
	<b>Fiber Type</b>	<b>Connector</b>	<b>Cable Type</b>	<b>Product Family</b>	<b>Packaging</b>
	1 OM1	LC LC Simplex	900 Tight Buffer	F Splice-On	S01 Single Pack
	3 OM3	LA LC/APC Simplex	2MM Jacketed		
	4 OM4	SD SC Simplex			
	5 OM5	SA SC/APC Simplex			
	S OS2				

**Example:**

**FT3LC900FS01** - FX Fusion Splice-On Connector, OM3/OM4, LC simplex, 900/250 μm, aqua housing, 1-pack



Splice Holder Family 2, FXFSSHFM2

### FX Fusion Accessories

Description	Belden Part Number
Standard Tool Kit (Standard Cleaver, Fiber Preparation Tools)	<b>FXFSTOSTK</b>
Precision Tool Kit (Precision Cleaver, Fiber Preparation Tools)	<b>FXFSTOPTK</b>

For a complete list of FX Fusion-compatible splicers and holders, please visit [www.belden.com/products/connectors/fiber-connectors/fusion-splice-on-connectors](http://www.belden.com/products/connectors/fiber-connectors/fusion-splice-on-connectors) and refer to the [installation tools reference guide](#).

### Installation Accessories

Description	Belden Part Number
Precision Cleaver	<b>FXFSTOPCL</b>
Standard Cleaver	<b>FXFSTOSCL</b>
Slitter for Jacketed Fiber	<b>FXFSTOSLT</b>
Splice Holder Family 1	<b>FXFSSHFM1</b>
Splice Holder Family 2	<b>FXFSSHFM2</b>
Splice Holder Family 3	<b>FXFSSHFM3</b>
Splice Holder Family 4	<b>FXFSSHFM4</b>
Splice Holder Family 1 (for Breakout Kit 900 μm)	<b>FXFSSHFM1LB</b>
Splice Holder Family 2 (for Breakout Kit 900 μm)	<b>FXFSSHFM2LB</b>



© 2024 | Belden and its affiliated companies claim and reserves all rights to its graphic images and text, trade names and trademarks, logos, service names, and similar proprietary marks, and any other intellectual property rights associated with this publication. BELDEN® and other distinctive identifiers of Belden and its affiliated companies as used herein are or may be pending or registered or unregistered trademarks of Belden, or its affiliates, in the United States and/or other jurisdictions throughout the world. Belden's trade names, trademarks, logos, service names, and similar proprietary marks shall not be reprinted or displayed without Belden's or its affiliated companies' permission and/or in any form inconsistent with Belden's business interests. Belden reserves the right to demand the discontinuation of any improper use at any time.