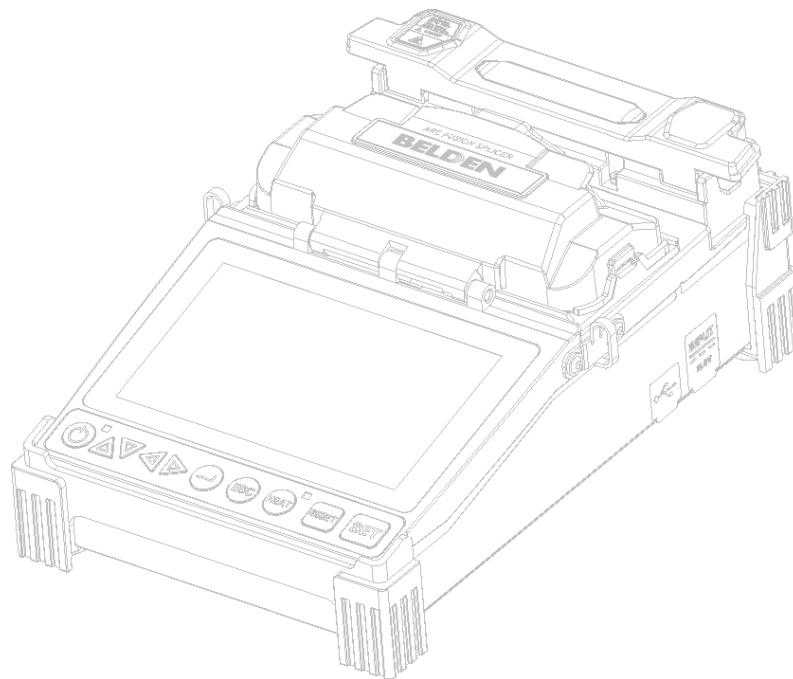


# DataSync Manual

## Data Communications Program for FX Fusion Splicer *Short version*



## Table of Contents

---

I. Installation of Program	2
1. Preparations for installation of the program	
2. Installation of program	
3. Check for proper installation of the program	
4. Check for proper installation of USB device driver	
5. Manual installation of USB device driver	
II. Use of DataSync	14
1. Monitoring	
2. Memory	
3. Firmware upgrade	

## I. Installation of Program

---

### 1. Preparations for installation of DataSync program

---

- ☐ Login in to the computer with administrative rights.
- ☐ Terminate all the running programs for stable installation of the program.  
Some anti-virus programs may affect proper installation of DataSync program.
- ☐ Get a USB mini-B type cable to connect the splicer to the computer
- ☐ Refer to this location for a Setup file if not using an upgrade CD.  
[www.belden.com/splice-on/software-update](http://www.belden.com/splice-on/software-update).

## 2. Installation of the DataSync program

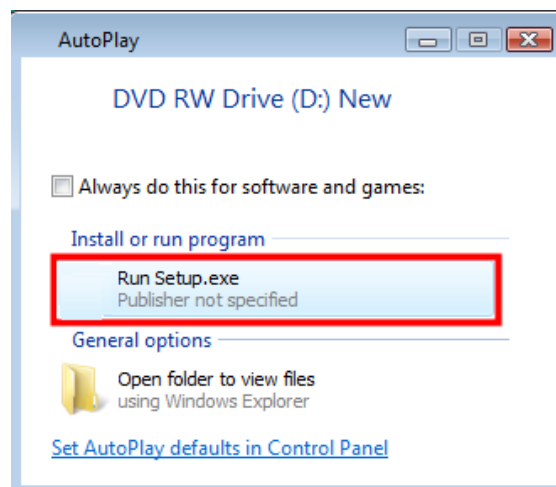
---

These are instructions for installing the DataSync program based on the operating system of *Windows 7* 32 bit, English version.

- 1 If splicer is connected to computer with USB, disconnect it.
- 2 Terminate all the running programs for stable installation. When an anti-virus program monitors the installing process, the program might not be properly installed. If it is the case, terminate the anti-virus program during the installation.
- 3 Insert the provided installation CD-ROM into CD-ROM or DVD drive.
  - ☐ The installation program is executed in approximately 3 to 4 seconds based on performance of computer.
  - ☐ The installation program may not be executed depending of computer settings.

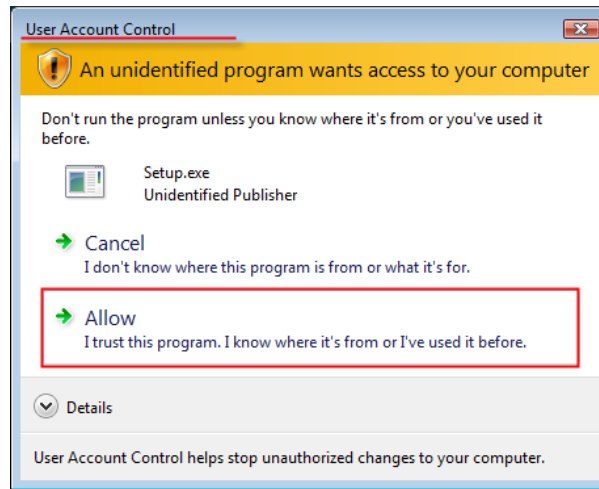
To prevent execution of malicious programs, operating systems or anti-virus programs already installed will, most of the time, deactivate the automatic execution of the CD-ROM or DVD drive.

If it is the case, find the *Run Setup.exe* program, located on the CD-ROM or DVD, and double-click on it to launch it.

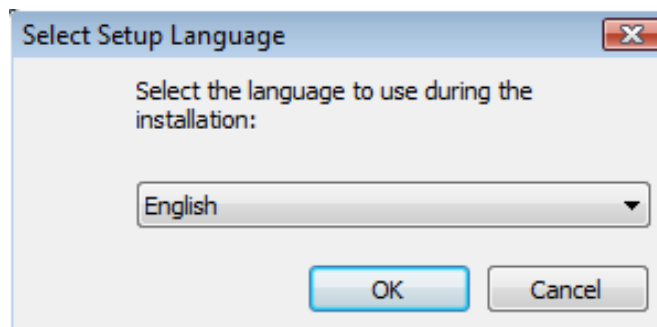


- ☐ If the installation file ("Setup.exe") is provided, not the installation CD, run the installation file by double-clicking on it.

- 4 When “User Account Control” window appears with the message below after running the installation file, continue the installation by clicking the <Allow> button.

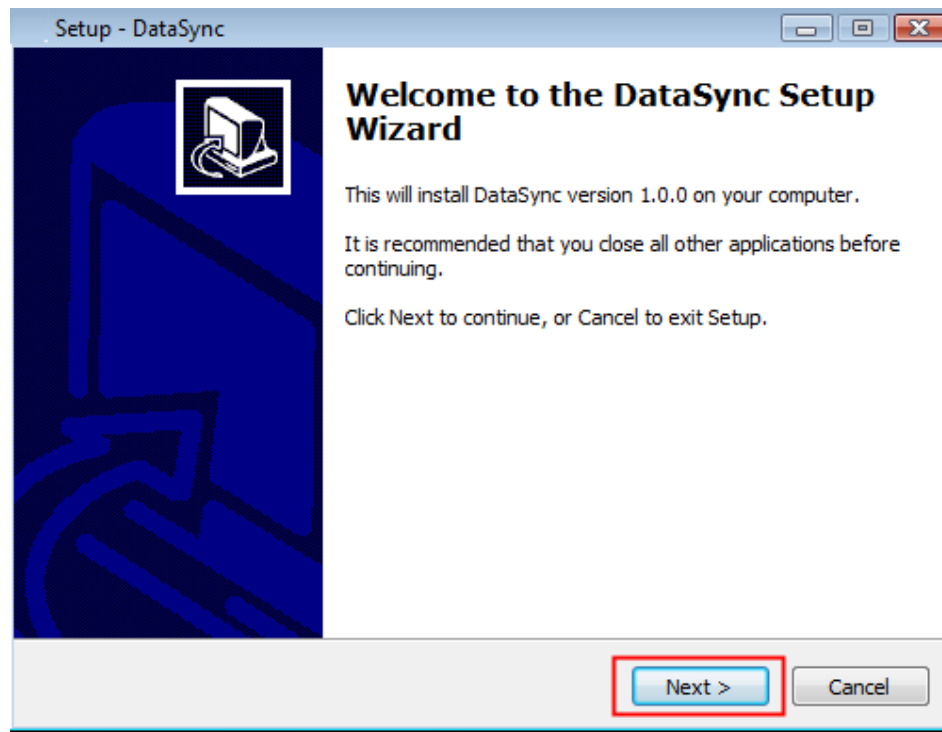


- 5 A window for selecting setup language appears. Push the OK button after selecting the language to use and move to the next step.

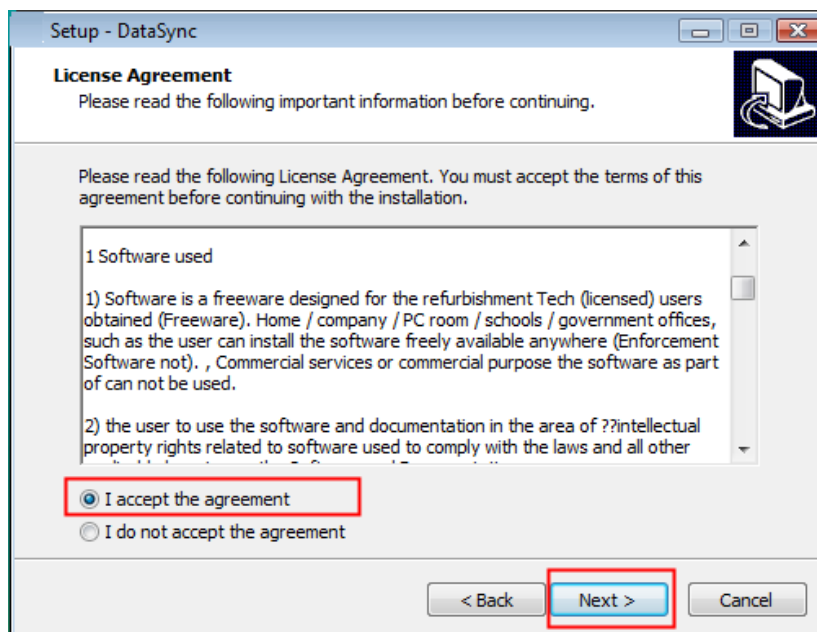


**Installation will be processed based on the selected language and DataSync program will also be displayed with this same language after installation.**

- 6 A welcoming message from the installed program appears. Continue the installation by clicking the <Next> button.

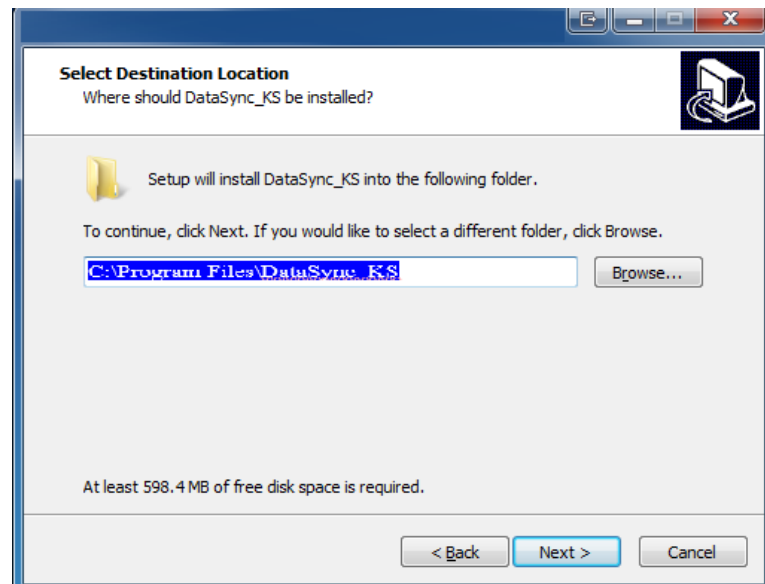


- 7 A window asking whether to accept the agreement with the software license appears. Push the <Next> button after accepting the agreement and move to the next step.

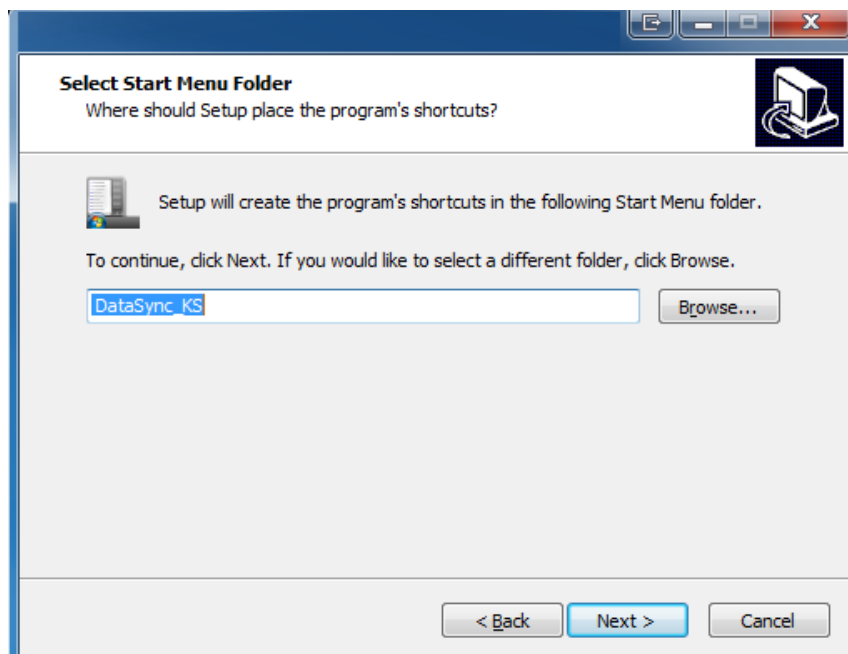


- 8 A window to select a folder where the program will be installed appears. A different folder may be designated, if desired. The program is installed in the default folder, “C:\Program Files\DataSync\_KS”, in most cases.

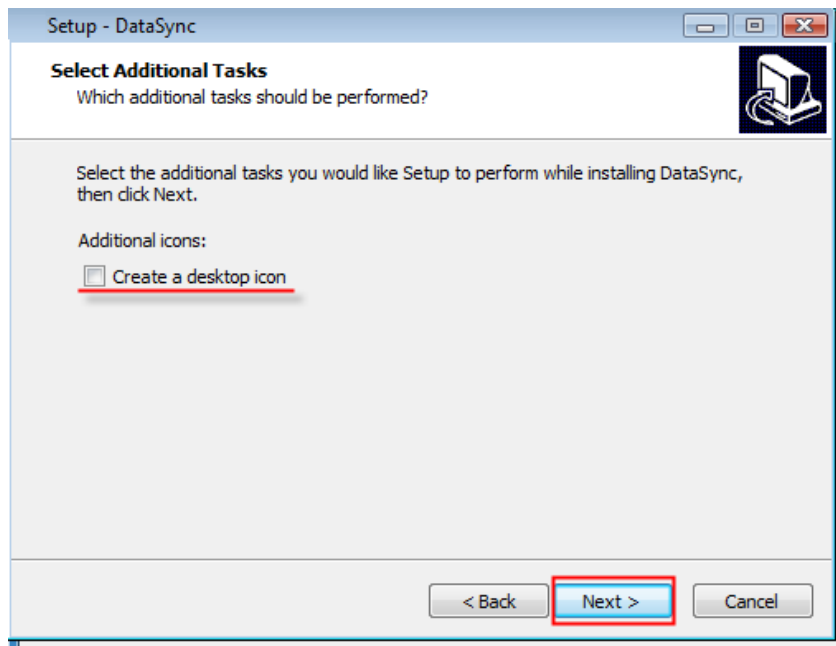
Click on the <Next> button and move to the next step.



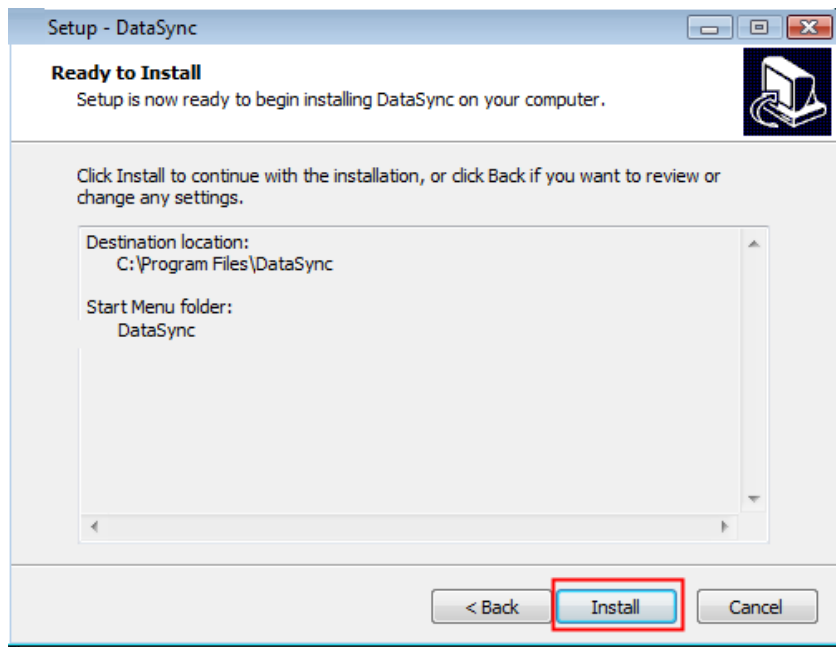
- 9 On this screen, you may assign the name that is displayed in the start menu for the program. The default “DataSync\_KS” is used in most cases.



- 10 Here, you may choose to create a shortcut to the program on your computer desktop by checking the checkbox.

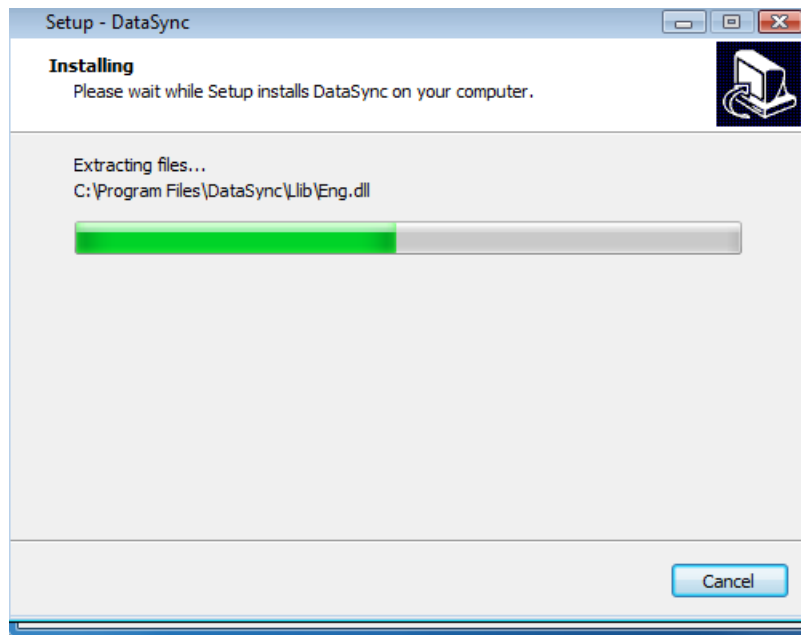


- 11 Files required by the program are ready to be installed. Click on the <Install> button and move to the next stage.

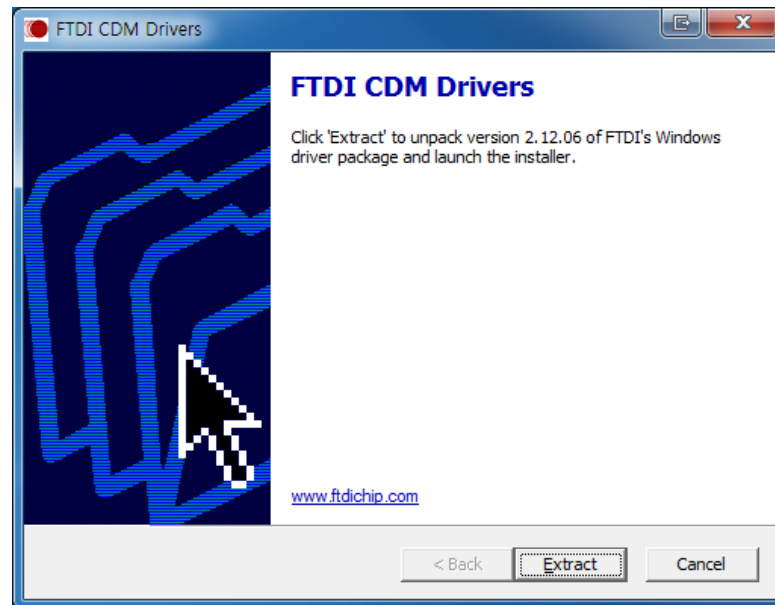




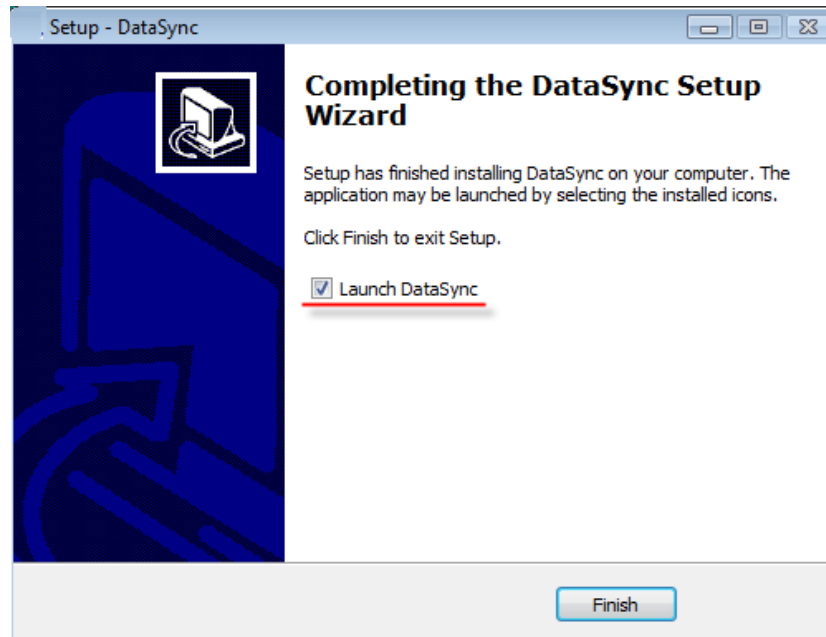
- 12 Installation is processed as below.



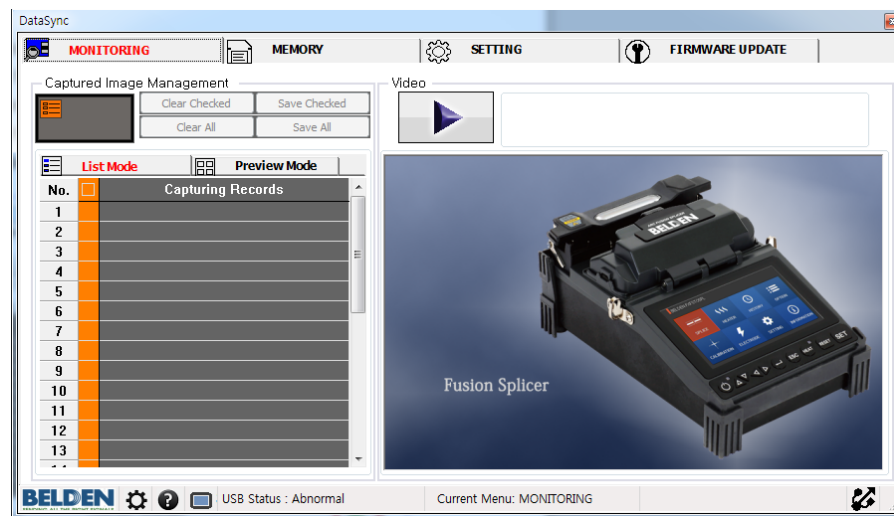
- 13 USB device drivers and other execution settings are automatically installed.  
(Push the **Extract** button)  
It can take a little while based on computer specification. Wait until the installation is completed.



- 14 After installation of the driver is completed, a completion screen will appear and the installation is finished by clicking the <Finish> button. If you want to launch the DataSync program after the installation, check the checkbox first and then push the <Finish> button. If you do not check the checkbox, you will need to launch the program manually by going to the Start menu and picking the appropriate entry.

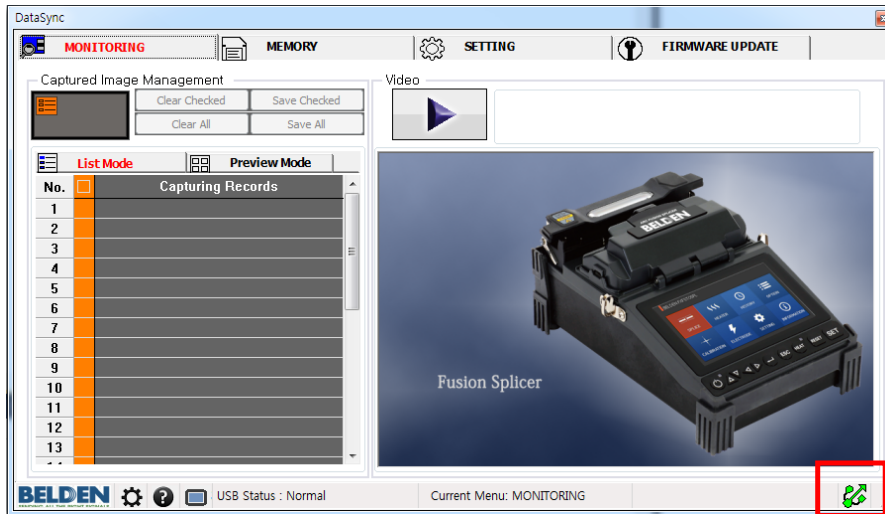


- 15 When you check the checkbox “Launch DataSync” and push the <Finish> button on the screen of installation completion, DataSync program is launched after installation process is finished.



- 16 Make sure that the splicer is connected to the computer by USB cable. When DataSync program is being executed, an icon displaying the status of connection to the splicer at the bottom right turns green.

The splicer may not be immediately recognized right after installing the program based on performance or settings of user's computer. When DataSync program does not successfully recognize the splicer, check the USB-to-Serial Com port.

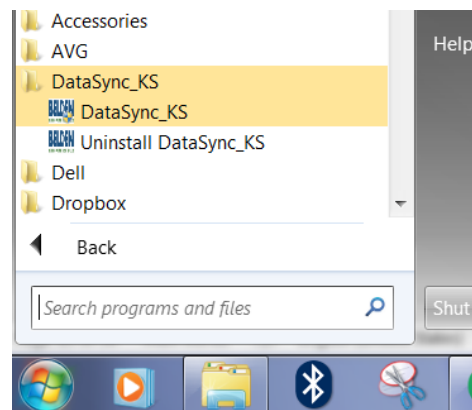


When USB connection becomes activated at the bottom right of the DataSync program screen as above, it is ready for normal use of the program.

3.

### 3. Check for proper installation of program

In general, when the name of the program is not changed during the installation process, you can execute the program as below.



If the program is properly executed, it is normally installed.

#### 4.4. Check for proper installation of USB device driver

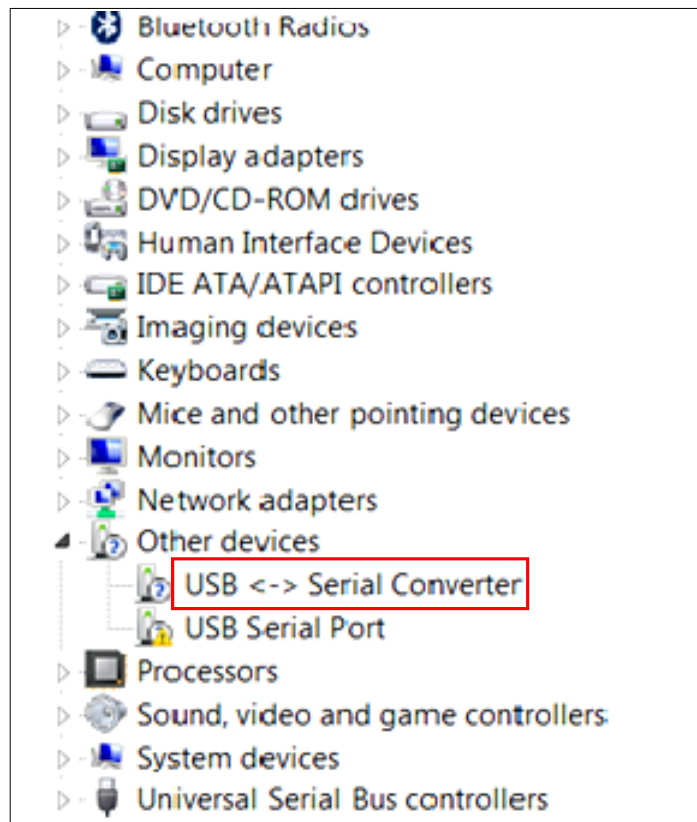
You can check whether USB driver is properly installed with the process below.

- 1 Turn on the splicer, boot it up and connect it to the computer with the USB cable.

- 2 Select "Properties" by clicking the right mouse button on the "Computer" menu item that appears in "Start Menu."

Click "Device Manager" menu on the left in the activated window of system properties

When USB Serial Port (denoted as a COMx device or as a USB Serial device) appears in the list of Device Manager as below, computer recognizes the device through USB.



## 5. Manual installation of USB device driver

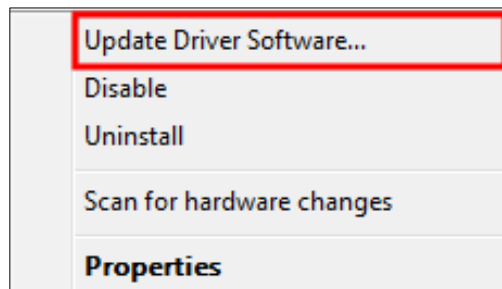
In most cases, DataSync program and USB device driver are properly installed with the installation program.

When USB device driver installed with the installation program is not properly working, a user can directly install it by referring to this section, briefly described here.

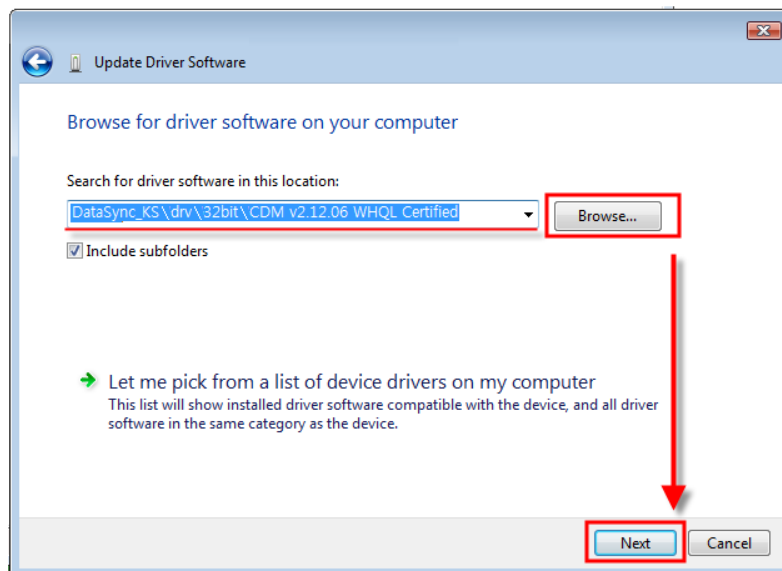
Manual installation process requires some experience on systems. It is recommended for you to manually install USB device driver after making inquiries to computer administrator.

Select "Update Driver Software" from the menu appeared with clicking on the right mouse button on unknown Device or USB to Serial port

Click Browse my computer for driver software.

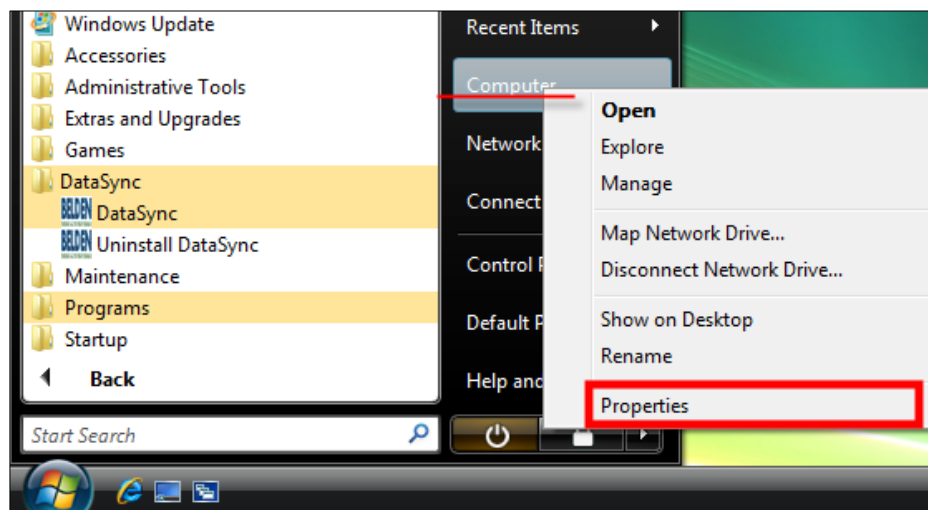


Select Driver file in install folder as below when the operating system of your computer is 32-bit Windows or 64-bit Windows.

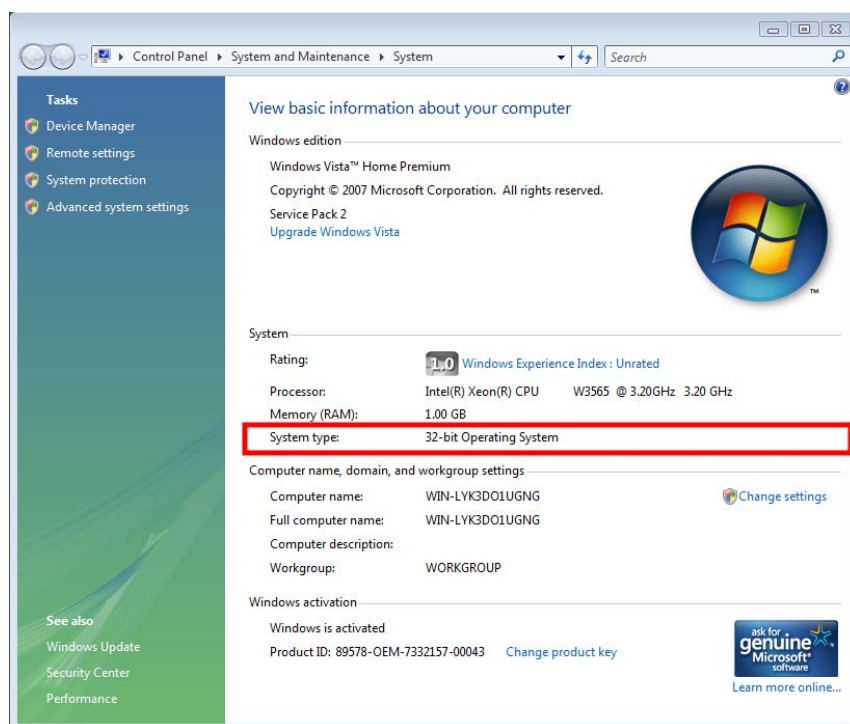


Push the <Next> button and move to the next step.

- 1 To know what is the Operating System of your computer select “Properties” by clicking on the right mouse button on “Computer” from the “Start Menu”.



You can check it from “System type” as the image below.



## II. Use of DataSync


### 1. Monitoring

Click “Monitoring” tab at the top of the screen.


You can see an interlocked screen of the splicer connected to DataSync, capture the interlocked screen as an image, save and manage the captured images.

It also provides control functions such as button adjustment.

#### A. Connection with splicer

You can see the screen of the connected splicer in screen play section by clicking the button. 

Check first whether the connection to the splicer is normal.

Screen linkage stops by clicking the button. 



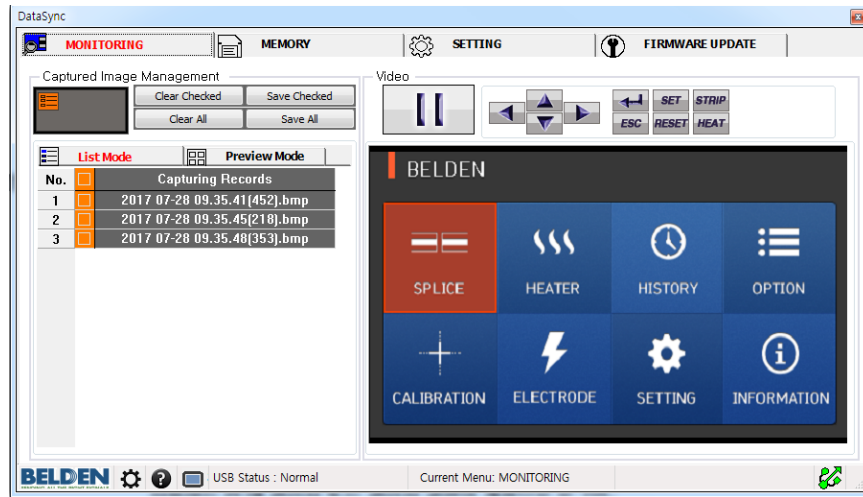
<Image of interlocked screen with splicer>

## B. Screen capture (clicking on the right mouse button)

While the splicer is connected to DataSync and being played, you can capture the played screen by clicking on the right mouse button in screen play section.

Captured images are registered on the list on the left-hand side in real time.

The list on the left manages the list of captured images and newly captured images are added at the end of the list.

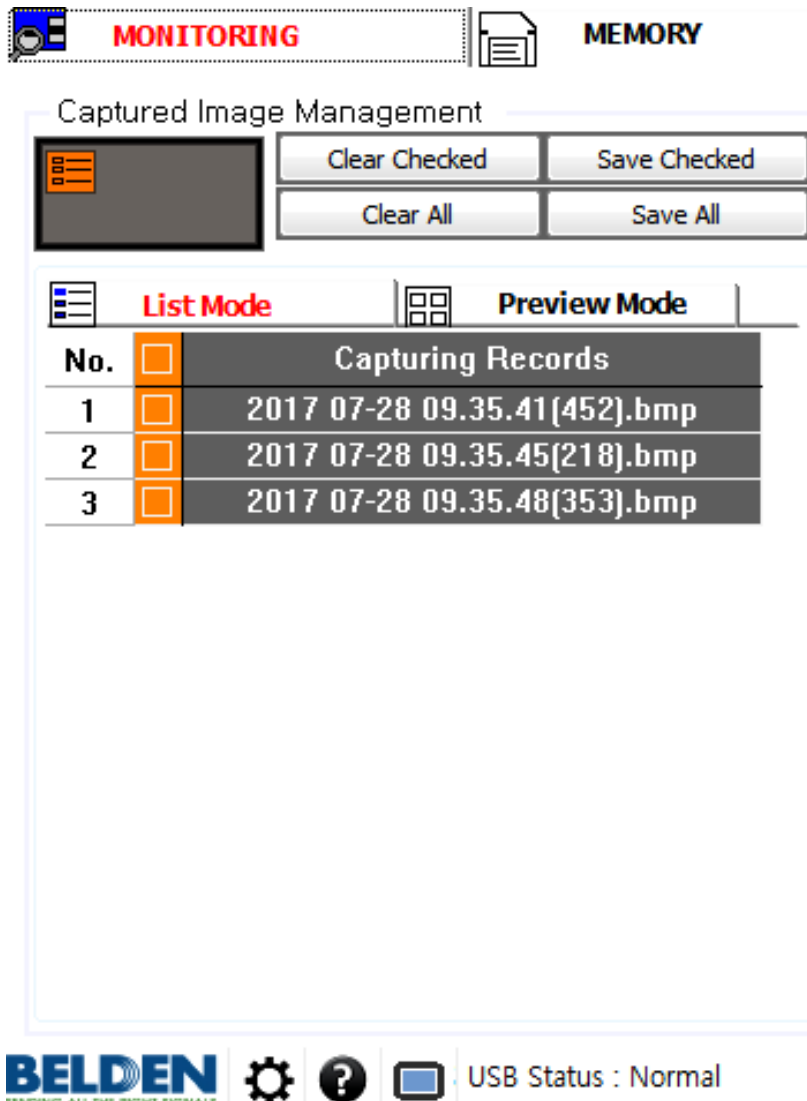


<Capturing current screen by clicking on the right mouse button  
in screen play section >



### C.Managing captured images

Images captured by clicking on the right mouse button in screen play section are displayed on the management list of captured images on the left of the program.



The management list of captured images consists of two tabs, which are list mode tab and preview tab.

Contents in both tabs are identical but they are separated for users' convenience with differences below.

- ☐ List mode tab

It displays captured images as a list according to time of the capturing.

- ☐ Preview mode tab

It displays captured images as a thumbnail format for preview.



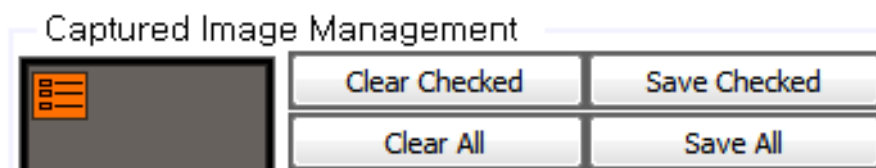
**The List mode tab and Preview tab are twins. For example, when a list in List mode tab is deleted, it also deleted in Preview tab.**



**Captured images in List mode are displayed as the format below.**

#### D. Managing captured images: description of items at the top

Items at the top consist of Preview section and List management buttons.





Preview section on top left displays images of the list for preview by clicking the list in List mode tab.

Parameter	Description
<div>Clear Checked</div> Deleting selected items	It deletes selected items on the list.
<div>Clear All</div> Deleting all	It deletes all the items on the list.
<div>Save Checked</div> Saving selected items	It saves selected items on the list in a certain folder. A window of folder searching appears by clicking the button. After designating a folder where selected items are to be saved and clicking the <OK> button, selected items are saved in the designated folder.
<div>Save All</div> Saving all	It saves all the items on the list in a user-designating folder.






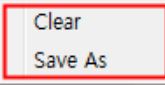

#### E.Managing captured images: Selecting / Deselecting all items on the list

You can select or deselect all the lists by clicking the checkbox on the header at the top of the list.

<div>  <b>List Mode</b> </div>		<div>  <b>Preview Mode</b> </div>
No.	<input type="checkbox"/>	Capturing Records
1	<input type="checkbox"/>	2017 07-28 09.35.41[452].bmp
2	<input type="checkbox"/>	2017 07-28 09.35.45[218].bmp
3	<input type="checkbox"/>	2017 07-28 09.35.48[353].bmp

#### F. Managing captured images: Simple deletion and saving

You can delete or save images on the list by right-clicking an item on the list and selecting an option from the pop-up menu.

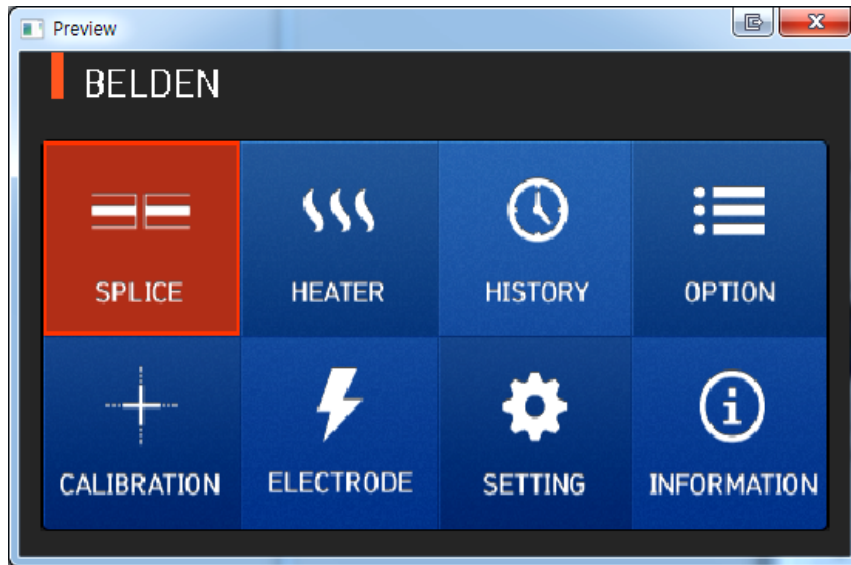
	List Mode		Preview Mode
No.		Capturing Records	
1		2017 07-28 09.35.41(452).bmp	
2		2017 07-28 09.35.45(21	 Clear Save As
3		2017 07-28 09.35.48(35	

#### G. Splicer control by clicking in screen play section

You can control the splicer to the same effect as touching the splicer screen by clicking the menu button in the screen play section.

## H. Window of Preview: Preview of captured images

You can preview relevant captured records by double-clicking items on the list in list mode or preview mode.




You can see twice-enlarged images by right-clicking on the window above for preview and you can randomly enlarge or reduce images by changing the size of the preview window. You can close the preview window by using the X button on top.

#### I. Adjustment of program size during monitoring

In a case that you adjust the size of DataSync program during the monitoring, the screen of the splicer shown in screen play section is adjusted based on the size and the ratio.

Default screen size is recommended for a low-powered computer.

You can change the program to the default size by clicking the  button at the bottom of the program.

#### J. Changing main menu tab during monitoring

Screen play automatically stops if you change main menu (Memory / Setting / Firmware update) during monitoring.

You can replay screen by returning to monitoring menu anytime and clicking on the

 button.

#### K. Disconnecting USB cable connection during monitoring

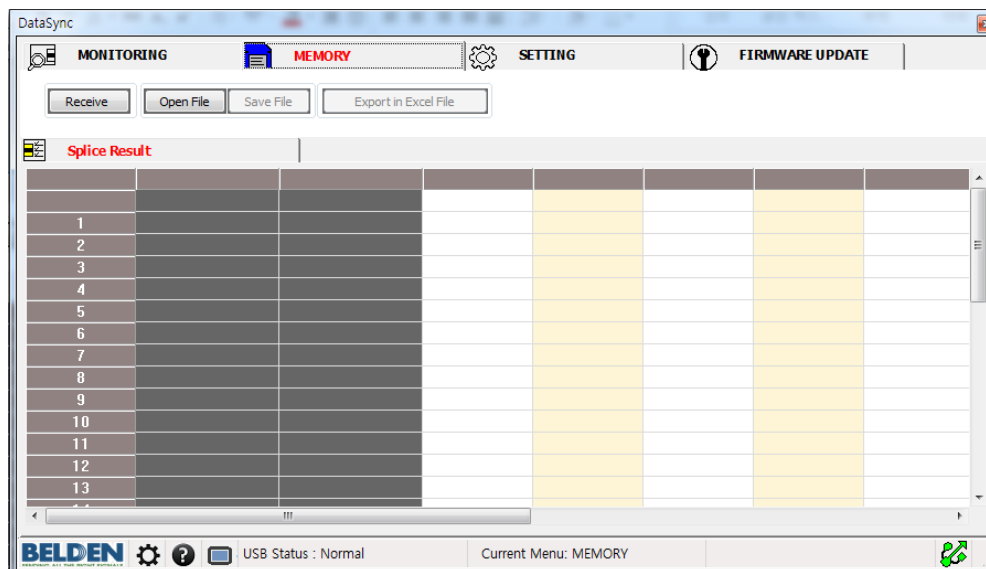
Do not disconnect USB cable or turn off the splicer during monitoring or DataSync execution. All unsaved data could be lost.

## 2. Memory

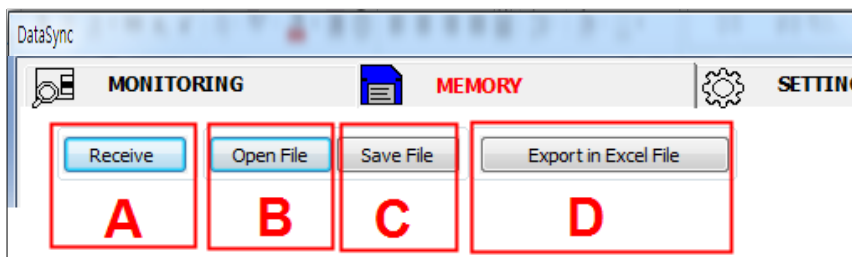
Click the “Splice Result” tab to display the fusion result list screen.

### See fusion results

Move to the screen of fusion result list by clicking “Splice result” tab.



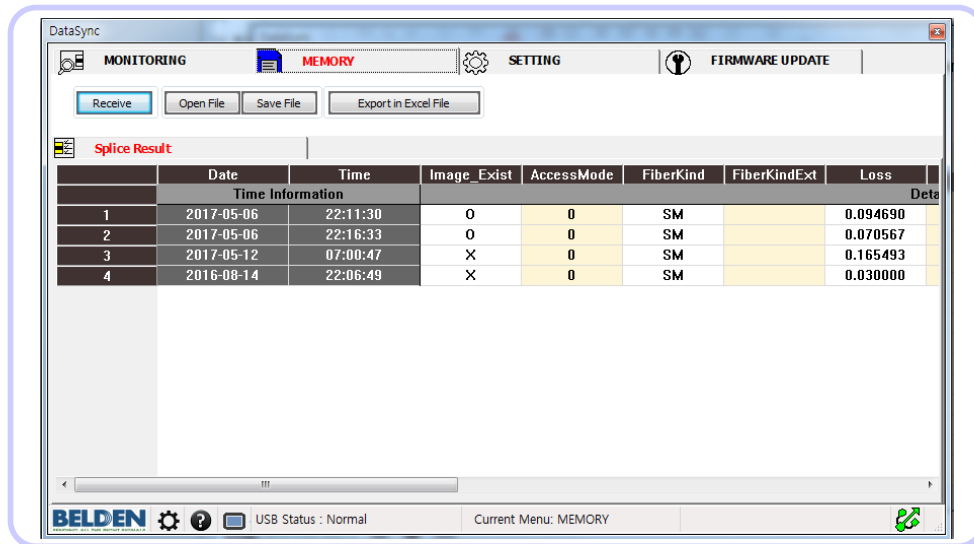
You can see fusion results and save them by using A~D function buttons below.



### A. See fusion results

Fusion results are opened from the splicer by clicking <Receive> button (Receiving data) at the top and displayed in the list below.

It can take a little while when data is of a large volume.



**Function buttons at the top are activated when the device receives data properly.**

### B. Saving fusion results

You can save the list of fusion results you are looking at as a file.

Designate a path and a file name on the window appeared by clicking on the <Save File> button and push the <Save> button.

Note: the data must be saved in the “Splice Result” screen prior to switching to the “System Result” screen. Switching will remove the data from memory.



**The extension for a saved file is “.xdt” and it is a format editable by using DataSync program.**



### C. Opening saved file

You can open a list of fusion results already saved.

A window to select a file appears with clicking on the <Open File> button.

You can open files saved before with “.xdt” format here.



**The extension for a saved file is “.xdt” and it is a format editable by using DataSync program.**



**It can only open list files of fusion results saved before.  
When you try opening files with other formats or files that are of “.xdt” format but not list files, a message of “invalid file”**

### D. Export in Excel file

You can save the current list as an MS Office Excel file (.xls).

You can enter a path and a file name on the window appeared by clicking on <Export in Excel File> button at the top of the screen.

You can see and print saved Excel files by using MicroSoft Excel program.

### 3. Firmware upgrade

---

DataSync provides two methods for updating the splicer firmware. They are update through the Internet and with files.

In case of update through the Internet, user's computer should be available for internet connection and be able to access the Belden website. Latest version of the firmware can be found at the following location:

[www.belden.com/splice-on/software-update](http://www.belden.com/splice-on/software-update)

In case of firmware update with files, a user should have the newest version of the firmware possible.



**The device and DataSync should be connected for firmware update.**

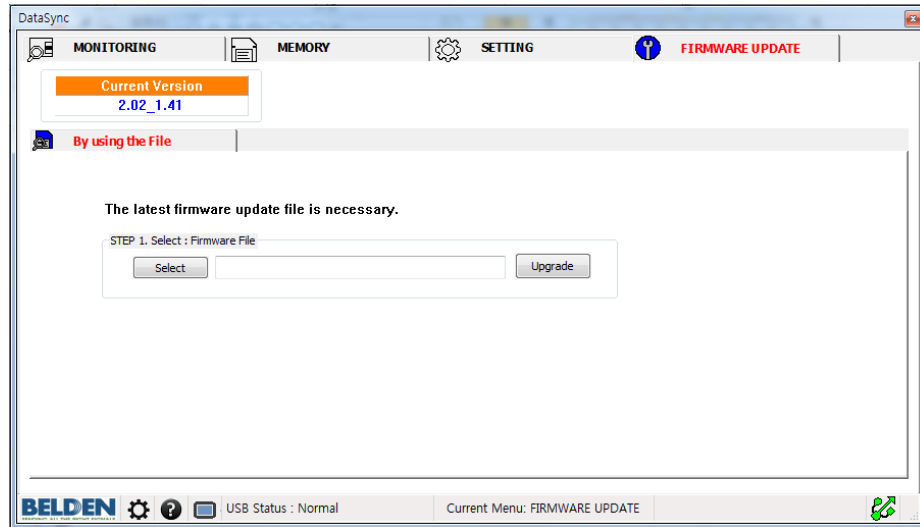


**Check the items below before firmware update.**

- ☐ **Check whether the power of the device is turned on and USB is properly connected.**
- ☐ **Check whether the battery power of the device is enough.**
- ☐ **Do not disconnect the USB cable or turn off the power of the device during firmware update.**

## Firmware update with files

A user should have the newest version of firmware available. Check version of firmware to be installed before update.



Firmware update with files is processed by the two steps below.

### Step 1. Selecting firmware file

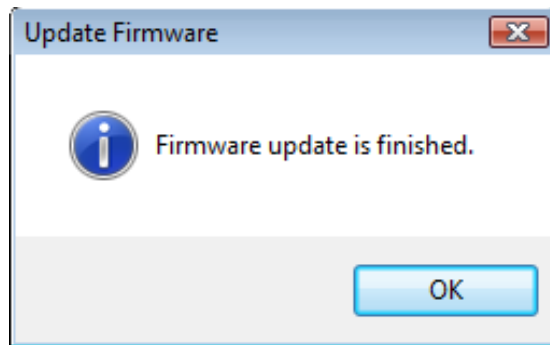
Push the <Select> button to choose the firmware update file prepared already, and the file name is displayed on the screen.

## Step 2. Installing new firmware

Install the firmware selected in Step 1 on the splicer.

When the version of the existing firmware file is identical with or lower than that of installed one on the splicer, installation process stops.

A message notifying completion of installation appears when the installation is finished.



**Once the firmware is installed the splicer will restart. This may take several minutes.**

**When the device does not restart even after a long period of time, turn off the power of the device and turn it on again.**

**Do not disconnect USB cable.**

**When the new firmware is completely installed on the device, DataSync automatically tries USB connection again to the device.**

- ☐ **When DataSync continues to fail to recognize the device after firmware installation, disconnect the USB cable connecting the device and PC and reconnect it after five seconds. Repeat this process a few times if DataSync cannot recognize the device.**
- ☐ **To check whether firmware update is properly installed and to see the firmware version of the current device, you can see "Current Version" at the top of "Firmware Update" screen.**