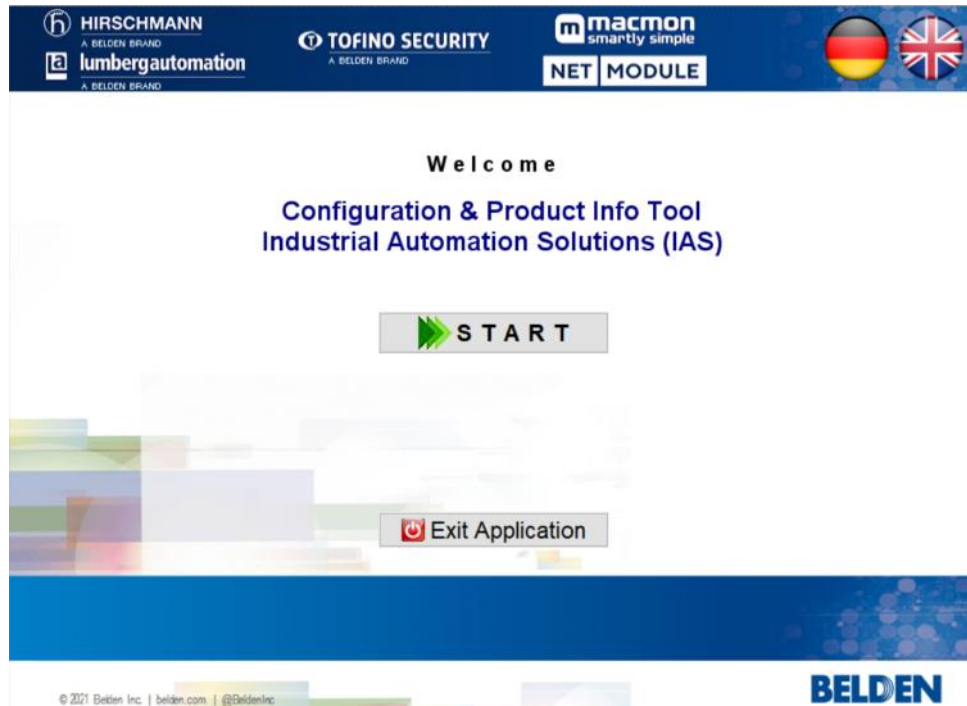


# Configuration & Product Info Tool Industrial Automation Solutions (IAS)

Release 1.4.3 RC1 [20240326]

Valid as of 1<sup>st</sup> of July 2024



## Manual: **Configuration & Product Info Tool Industrial Automation Solutions (IAS)**

### Contents

Thank you for using the application "Configuration & Product Info Tool Industrial Automation Solutions (IAS)".

This manual contains complete instructions for installation and use. The help texts are also available within the program if you click the **<Help>** button in the various dialogs.



#### **Page    Content**

<a href="#">3</a>	<i>Installation: Windows only</i>
<a href="#">4</a>	<i>Setup: Entering and editing customer data</i>
<a href="#">5</a>	<i>Application: Main window</i>
<a href="#">6</a>	<i>Application: Overview configurator</i>
<a href="#">7</a>	<i>Application: Overview product hierarchy</i>
<a href="#">9</a>	<i>Lists: Product list</i>
<a href="#">10</a>	<i>Products: Find single product</i>
<a href="#">11</a>	<i>Products: Product detail view</i>
<a href="#">12</a>	<i>Configurators: Common functions</i>
<a href="#">16</a>	<i>Configurators: OpenRAIL (RS20,RS22,RS30,RS32,RS40) &amp; Bobcat (BRS20 &gt; BRS56)</i>
<a href="#">17</a>	<i>Configurators: OpenRAIL Power Family (RSP &amp; RSPS)</i>
<a href="#">18</a>	<i>Configurators: BAT Wireless Family (BAT-R, BAT450-F &amp; BAT867-R)</i>
<a href="#">19</a>	<i>Configurators: EAGLE Security Router (EAGLE20, 30, 40)</i>
<a href="#">20</a>	<i>Configurators: EAGLEONE Security Router / TOFINO Xenon Security Appliance</i>
<a href="#">21</a>	<i>Configurators: MICE Switch (MS20, MS30), Media Module (MM2, MM3) &amp; Backplane (MB20)</i>
<a href="#">22</a>	<i>Configurators: MSP Switch (MICE Switch Power: MSP30, MSP32)</i>
<a href="#">23</a>	<i>Configurators: MSP Media Module (MICE Switch Power: MSM2, MSM4)</i>
<a href="#">24</a>	<i>Configurators: MACH1020/1030 (MAR1020,1022,1030,1032,1120,1122,1130,1132)</i>
<a href="#">25</a>	<i>Configurators: MACH1040 (MAR1040,1042,1140,1142)</i>
<a href="#">26</a>	<i>Configurators: OpenRAIL Power Enhanced (RSPE)</i>
<a href="#">27</a>	<i>Configurators: OpenRAIL Power Enhanced Media Modules (RSPM)</i>
<a href="#">28</a>	<i>Configurators: GREYHOUND 1020/1030 Switch (GRS) / Media Module (GRM)</i>
<a href="#">30</a>	<i>Configurators: GREYHOUND 1040 Switch (GRS) / Media Module (GMM) / Power Supply (GPS)</i>
<a href="#">32</a>	<i>Configurators: GREYHOUND 105/106 Switch (GRS105/106)</i>
<a href="#">33</a>	<i>Configurators: EESX Embedded Ethernet Switch Extreme (EESX), RED25 Redundancy Switch (RED25) SPIDER III Entry Level Switch (SPIDER-SL, SPIDER-PL)</i>
<a href="#">34</a>	<i>Configurators: OCTOPUS II (OS20, OS30)</i>
<a href="#">35</a>	<i>Configurators: OCTOPUS III (OS3)</i>
<a href="#">36</a>	<i>Configurators: MIPP Modular Industrial Patch Panel (MIPP)</i>
<a href="#">37</a>	<i>Application: Check products</i>
<a href="#">39</a>	<i>Application: Version Check Application &amp; Update Check Database</i>
<a href="#">41</a>	<i>Application: Uninstall</i>
<a href="#">42</a>	<i>Application: F.A.Q.</i>

*All terms and instructions in this manual refer to the Microsoft Windows operating systems XP, Vista, 7, 8, 8.1. and 10*

## Manual: **Configuration & Product Info Tool Industrial Automation Solutions (IAS)**

---

### Installation Windows only

The Configuration & Product Info Tool application is a JAVA Swing program.

You need a current version of the JAVA runtime environment (JRE) installed on your computer to use it. The JRE is also needed for example to use the web interfaces of our managed switches.



On demand you can either download the Oracle JRE from here:

<http://java.com/download>

Alternatively you can also use the Amazon Corretto JRE which you can download from here:

<https://corretto.aws/downloads/latest/amazon-corretto-8-x86-windows-jdk.msi>

For **Windows** XP, 7,8,10 & 11 the application is installed using a standard setup routine.

At least the Wide SXGA (1600x900 pixel) resolution is recommended as screen resolution. Ideally, use a screen with a Full HD resolution (1920 x 1080 pixels), which is often referred to as HD1080.

Please follow these steps to install the application using the standard setup routine on Windows:

*(Please remove any previously installed version before running the installation file ([see here](#)).)*

1. Go to our website

<https://www.belden.com/resources/hirschmann-configuration-tool>

and click the **<ConfigTool for Windows>** button  
to download the current version of the installation program "ConfigToolSetup.zip".

2. Unzip the file and start the installation file "ConfigToolSetup.exe".

*Please see page 43 of this manual if you run into issues with the download or the unzipping of the setup file.*

3. Select your language and you will then be guided through the installation.

4. After the installation you can open the application using either the  
"Belden Industrial Automation Solutions (IAS) Product Config Tool" shortcut in the start menu  
or the desktop icon named "Belden Industrial Automation Solutions (IAS) Product Config Tool".S

## Manual: Configuration & Product Info Tool Industrial Automation Solutions (IAS)

### Setup

#### 1. Organisation data

The first time you start the application you can enter your address data. It is required to create an inquiry email which can be sent to a BELDEN sales office.

Your data is used only to reply on your feedback or inquiry mail. The mails which are created by the application will be forwarded to the standard email program of your computer, but they are not sent automatically. You can modify the mail to your needs beforehand. If you do not enter address data at this point you can use the application anyway but the functions for feedback and product inquiry via mail cannot be used.

#### 2. Your settings

The first two “**check box**” control whether the application automatically opens either the configurator overview or the product hierarchy overview directly after opening the application’s main window.

This selection also controls which overview is opened when you click on the big red start button in the main window. If you do not check any of the two check boxes the application just opens the main window and a click on big red start button always asks you each time which overview should be opened.

Please select which overview is the one for you which is related to your focus. Both views additionally have a button which opens the other view so that you can easily switch between them without the need to change this setting each time.

The third “**check box**” either defines a “CrLf” (new line) or a semi colon (;) as delimiter character for the clipboard function of all configurators.

#### 3. Save & Exit

Save your data with a click on the <Save> button.

The application will check your input and if the input is valid the window will be closed automatically.

If you have not entered your address data simply click the <Skip> button.

You then can use the application



A special feature of the application is that you can also use it “offline” without an internet connection after a successful installation. However automatic checking for updates can only take place when you are connected with the internet and the <eCatalog> button of course also only works when you are online.

The <Update> button opens the manual database update check dialog. ([see here](#))

#### Privacy Policy

The privacy policy is explained in this window and you can agree to it by checking the check box below. Without your agreement you cannot use the inquiry function and no data is stored by BELDEN.

#### Disclaimer

Belden cannot be held liable for any damage arising in connection with the use of this application under any circumstances.



## Manual: Configuration & Product Info Tool Industrial Automation Solutions (IAS)

### Overview window

This dialog is the new main overview of the application.



A click on the big red <START> button opens either the configurator or the product hierarchy overview window depending on what you have saved as your personal preference. (see page 4)

Below you find various buttons:

- <My data> Here you can edit [your address data](#) or change the display language of the application.
- <Release notes> Displays a report of the recent application changes.
- <Version> Opens the manual application [version check dialog](#).
- <Feedback> Creates an email where you can give your feedback about the application.
- <Exit> Quits the application.

## Manual: Configuration & Product Info Tool Industrial Automation Solutions (IAS)

### Configurators: Overview & Search

This overview displays all freely configurable product series in a list on the left of the screen.

For a better orientation the series are displayed in individual groups.

Select a product series from this list and the complete overview of all parameters and components then appears on the right.

You can copy the data displayed to the clipboard by clicking on the clipboard button at the top.

A double click either on the series name in the list at the left or on a component in the right area of the screen will automatically open the associated configurator. If you have double clicked a component this one automatically will be preselected in the configurator.

This overview also allows you to search for keywords.

Enter a search term in the FINDER at the top and confirm with the Enter key or click the search button. The table then only shows the product series found where the search term applies. The parameters and components for those series where the search term applies are additionally highlighted in yellow.

You then can double click on these components to open the configurator where the selected component then will be set automatically in the configurator and where all other parameter selections also will be restricted depending on this component selection.

The list on the left of the screen has a second tab named "Solutions". Using these buttons will open entry points for series which consist of a combination of a switch, modules and power supplies (e.g. Greyhound FE Solution) or open an overview of product variants of product family (e.g. BAT Family (Wireless) or RSPx Family).

Here you will also find the button to open a window where you can check multiple order codes which you might have in a list which you want to evaluate. Please read the manual on page 33 to understand more about this functionality.

Clicking the button **<Product overview>** in the top right corner opens the other big overview of the application which displays all products in a hierarchical structure.

## Manual: Configuration & Product Info Tool Industrial Automation Solutions (IAS)

### Overview Product Hierarchy

**Overview Industrial Automation Solutions (IAS)**

**Hierarchy Tree**

- All Products
  - Industrial Connectivity
    - Industrial Networking**
      - DIN Rail Switches
      - IP65/IP67 Switches
      - Embedded Ethernet
      - Fiber Fieldbus Repeater
      - Rack Mount Switches
      - Security & Firewalls
      - Software
      - Serial Communications
      - Wireless LAN
      - Accessories
      - Industrial Cellular Routers
      - Hirschmann IT
  - macmon

**Product Groups:**

- DIN Rail Switches:** Ruggedized unmanaged and managed Ethernet switches for Din rail mounting.
- IP65/IP67 Switches:** IP65/IP67 waterproof and dust-tight switches and routers from the OCTOPUS family allow fail-safe networks to be installed in a variety of applications.
- Embedded Ethernet:** Cost-effective solution for integrating state-of-the-art switch technology in automation equipment.
- Fiber Fieldbus Repeater:** With fiber interfaces, you can transmit data over several miles. Even when facing harsh industrial operating conditions, fiber components maintain high availability and redundancy.
- Rack Mount Switches:** Managed industrial rack mount Ethernet switches for hardened industrial applications.
- Security & Firewalls:** Belden's security devices deliver the functionality needed to implement the best practices of Defense in Depth and Zones and Conduits (IEC 62443).
- Software:** Hirschmann offers a broad collection of software tools to facilitate the deployment and operation of its hardware products.
- Serial Communications:** Serial devices enable you to easily connect any equipment with an RS232, RS422 or RS485 serial port to Ethernet.
- Wireless LAN:** The industrial wireless family of product solutions include a broad portfolio of access points, clients, WLAN controllers and antennas that work seamlessly together.
- Accessories:** A wide range of accessories offer everything you need for smooth operation of Belden's networking devices.
- Industrial Cellular Routers:** The OWL industrial cellular routers offer increased routing functionalities and advanced security capabilities in a single, reliable product.
- Hirschmann IT:** High performance, high port density, IT-focused switches, enabling extensive networking solutions for IT/OT convergence.

**Tree Controls:** ++, --, +, -, ▲

**Right Sidebar:** Top 1,2,3..., Product list, Hardware, Configurators, Check products, Search icon.

This overview displays the complete INET product portfolio in three bands of the window.

On the **left** you will see a hierarchy tree as you know it e.g. from the Explorer of your Windows computer.

In the **middle** you will find the **product groups** with an image and a short text which are related to the selected node in the tree.

On the **right** side you will find various buttons which are explained on the next page in details.

The product groups which are displayed in the middle show up to three little buttons at the bottom. The **<V>** button only appears when there are further sub groups available for a group. Clicking it "dives" into these sub groups and simultaneously the selection in the tree on the left side is set accordingly. Alternatively you can also just make a click on the product group image to dive one level deeper inside the product hierarchy.

As soon as you are in a sub group you can get back to a higher level again by clicking the **<blue arrow up>** button below the tree or you just make a click on a higher level entry in the tree itself.

The **<List>** button switches the view in the middle band to a table of the products which belong to this group.

The **<Tooling>** button opens all freely configurable product series which are associated to the current product group in a new window.

**DIN Rail Switches**

Ruggedized unmanaged and managed Ethernet switches for Din rail mounting.

Buttons: Dropdown, List, Tooling



## Manual: Configuration & Product Info Tool Industrial Automation Solutions (IAS)

### Overview Product Hierarchy

When you have switched to the list view using the **<List>** button you will find a search field above the table named **<Quick filter>**.

You can use it to search in the table for any item fast and easy.

You can open a product with a double click in its single display.

You can export the list to MS-Excel by clicking the appropriate button below the table.

Overview Industrial Networking (INET)

Hierarchy Tree

- All Products
  - DIN Rail Switches
  - IP65/IP67 Switches
  - Embedded Ethernet
  - Fiber Fieldbus Repeater
  - Rack Mount Switches
  - Routers & WAN
  - Security & Firewalls
  - Software
  - Serial Communications
  - Wireless LAN
  - Accessories
  - Industrial Cellular Routers

Quick filter

Part	Name group	Product code	Product name	Qty	PU	Status	Delivery time	Last Order	List
204	Rail managed	942104001	GECKO 4TX	1	1	ST	N	10 working days	
204	Rail managed	942104002	GECKO 5TX	1	1	ST	J	see demand	
204	Rail managed	943721102	IM2-2T	1	1	EA	N	10 working days	
204	Rail managed	943721101	IM2-2FIM2	1	1	EA	N	10 working days	
204	Rail managed	943720101	IM2-2FIM32TX1	1	1	EA	N	10 working days	
204	Rail managed	943719101	IM2-2FIS2	1	1	EA	N	10 working days	
204	Rail managed	943721101	IM2-4FIM2	1	1	EA	N	10 working days	
204	Rail managed	943722101	IM2-4TX1	1	1	EA	N	10 working days	
204	Rail managed	943722101	IM2-4TX1-EEC	1	1	EA	N	10 working days	
204	Rail managed	943638001	IM20-2N2S2N2S4HH	1	1	EA	N	10 working days	
204	Rail managed	943761101	IM3-1F3L2TX1	1	1	EA	N	10 working days	
204	Rail managed	943639101	IM3-1FIM2TX1	1	1	EA	N	10 working days	
204	Rail managed	943629101	IM3-1FIS21FIM2TX1	1	1	EA	N	10 working days	
204	Rail managed	943638101	IM3-1FIS2TX1	1	1	EA	N	10 working days	
204	Rail managed	943638101	IM3-1FIS2TX1-EEC	1	1	EA	N	10 working days	
204	Rail managed	943761101	IM3-2FIM2TX1	1	1	EA	N	10 working days	
204	Rail managed	943761101	IM3-2FIM2TX1-EEC	1	1	EA	N	10 working days	
204	Rail managed	943650002	IM3-2FIM2TX1-RT-EEC	1	1	EA	N	10 working days	
204	Rail managed	943637101	IM3-2FIM2TX1	1	1	EA	N	10 working days	
204	Rail managed	943762101	IM3-2FIS2TX1	1	1	EA	N	10 working days	
204	Rail managed	943762101	IM3-2FIS2TX1-EEC	1	1	EA	N	10 working days	
204	Rail managed	943650003	IM3-2FIS2TX1-RT-EEC	1	1	EA	N	10 working days	
204	Rail managed	943761101	IM3-4FIM2	1	1	EA	N	10 working days	
204	Rail managed	943638101	IM3-4FIM4	1	1	EA	N	10 working days	
204	Rail managed	943638101	IM3-4FIS2	1	1	EA	N	10 working days	
204	Rail managed	943650001	IM3-4TX1-RT-EEC	1	1	EA	N	10 working days	
204	Rail managed	943641101	IM3-4TX5	1	1	EA	N	10 working days	
204	Rail managed	943622001	IM4-2TX5FP	1	1	EA	N	10 working days	
204	Rail managed	943010001	IM4-4TX5FP	1	1	EA	N	10 working days	
204	Rail managed	943650001	MS20-0800CCPH400.X	1	1	EA	N	10 working days	
204	Rail managed	943435001	MS20-0800S4APH400.X	1	1	EA	N	10 working days	
204	Rail managed	943435002	MS20-0800S4APH400.X	1	1	EA	N	10 working days	
204	Rail managed	943950002	MS20-0800CCPH400.X	1	1	EA	N	10 working days	
204	Rail managed	943435003	MS20-1600S4APH400.X	1	1	EA	N	10 working days	
204	Rail managed	943435004	MS20-1600S4APH400.X	1	1	EA	N	10 working days	
204	Rail managed	943435005	MS20-0802S4APH400.X	1	1	EA	N	10 working days	
204	Rail managed	943435006	MS20-0802S4APH400.X	1	1	EA	N	4 weeks	
204	Rail managed	943435007	MS20-1602S4APH400.X	1	1	EA	N	10 working days	

Overall count of records: 262

Tree Controls: [Expand] [Collapse] [Refresh] [Filter]

Buttons: Back to hierarchy overview, Show product in product detail view, Output as Excel file (.xls)

You can close the list view with a click on the **<Back to hierarchy overview>** button and you will be back in the hierarchy view again.

Each product group always also contains all products and configurators of all its subordinate groups. So, if you click the top node **"All products"** of the hierarchy tree you will see one group only in the middle and a click on the **<List>** button in this group then will display all products of course. The **<Tooling>** button reacts in the same way which then offers all configurators in a new window.

You will find several buttons below the hierarchy tree to expand or collapse either all nodes or the currently selected node of the hierarchy tree only.

At the right side of the window you will find these buttons:

- <Top 1,2,3...>** Opens a product list with the most wanted products.
- <Product list>** Opens a product list which can be filtered extensively and from which you can open any product with a double click to show it in a single product window.
- <Hardware>** Opens a search dialog for a single hardware.
- <Configurators>** Opens a window with all product series which can be freely configured
- <Check products>** Opens a window to verify configuration codes.
- <Manual>** Opens this integrated help of the application.



## Manual: Configuration & Product Info Tool Industrial Automation Solutions (IAS)

### Lists: Product list

This dialog shows a list of all products.

#### FILTER

The list can be extensively filtered with the criteria in the header.

Criteria which are shown as text fields react directly to the ENTER key and filter the list immediately.

Criteria which are shown as combo boxes need a click on the **<Find it!>** button after the selection.

A selected value in a combo box can be removed with just a double click on the combo box.

TID	Product code	Product name	BU	PMG	Main group	PU	Quan...	Meas.	Status	Delivery Time	Last Order	Last Delive
2	942040001	0986 EMC 105	INET	290	Accessories		1	EA	N	on demand		
2	943766002	19 DIN Rail Adapter	INET	290	Accessories		1	EA	N	4 weeks		
2	942256004	19-Zoll mounting kit for 2 x PTN1104	INET	256	Dragon PTN		1	ST	J	6 weeks		
2	942256003	19-Zoll mounting kit for PTN1104	INET	256	Dragon PTN		1	ST	J	6 weeks		
2	942256001	19-Zoll mounting kit for PTN2206	INET	256	Dragon PTN		1	ST	J	6 weeks		
2	943972001	ACA11-M12 EEC	INET	290	Accessories		1	EA	N	10 working d...		
2	943751002	ACA11-RJ11 EEC	INET	290	Accessories		1	EA	N	10 working d...		
2	943913003	ACA21-M12 EEC	INET	290	Accessories		1	ST	N	10 working d...		
2	943271003	ACA21-USB EEC	INET	290	Accessories		1	ST	N	10 working d...		
2	942125001	ACA22-M12 EEC	INET	290	Accessories		1	ST	N	10 working d...		
2	942125002	ACA22-M12 EEC (right-angled)	INET	290	Accessories		1	ST	J	4 weeks		
2	942124001	ACA22-USB EEC	INET	290	Accessories		1	ST	N	10 working d...		
2	942152001	ACA22A-USB Mini	INET	290	Accessories		1	ST	J	10 working d...		
2	942074001	ACA31	INET	290	Accessories		1	EA	N	10 working d...		
2	942199001	Adapter Cable, M12-5pin to USB	INET	243	Octopus Pxx		1	ST	J	4 weeks		
2	942177001	Angled wall mounting plate for DIN r...	INET	202	Rail unmanaged		1	ST	N	10 working d...		
2	942177002	Angled wall mounting plate for DIN r...	INET	202	Rail unmanaged		1	ST	N	10 working d...		
2	942034003	BAT - Controller WLC100	INET	230	Wireless		1	EA	N	10 working d...		
2	942034006	BAT - Controller WLC1000	INET	230	Wireless		1	ST	N	10 working d...		
2	942034004	BAT - Controller WLC200	INET	230	Wireless		1	ST	N	10 working d...		
2	942034001	BAT - Controller WLC25	INET	230	Wireless		1	EA	N	10 working d...		
2	942034002	BAT - Controller WLC50	INET	230	Wireless		1	EA	N	10 working d...		
2	942034005	BAT - Controller WLC500	INET	230	Wireless		1	ST	N	10 working d...		
2	943981005	BAT-ANT-N-14G-IP23	INET	230	Wireless		1	EA	N	4 weeks		
2	943981006	BAT-ANT-N-18A-V-IP65	INET	230	Wireless		1	EA	N	4 weeks		
2	943981007	BAT-ANT-N-23A-V-IP65	INET	230	Wireless		1	EA	N	4 weeks		
2	943981008	BAT-ANT-N-23A-VH-IP65	INET	230	Wireless		1	EA	N	4 weeks		
2	942047001	BAT-ANT-N-3AGH-F (10pcs)	INET	230	Wireless		10	EA	N	4 weeks		



The **<->** buttons next to Product number, Product name, PMGrp (product main group), Product hierarchy number and Status are so-called tri-state buttons which successively display three different values when clicked. They influence how the list is sorted:

- no order
- ▲ ascending order
- ▼ descending order

All filter criteria can be removed with a click on the **<Reset>** button.



#### DISPLAY

You can open the product in the single price window by double clicking a row in the list or by highlighting a row with a click and then clicking the big button in the left hand bottom corner.



You can export the list as a delimited text file (csv) with a click on the **<Export as Ascii flat file>** button. The program generates a pdf file with a click on the **<PDF preview/print>** button.

#### FURTHER OPTIONS

With the top right button you can maximise the window to full screen or revert to the original size again.



## Manual: Configuration & Product Info Tool Industrial Automation Solutions (IAS)

### Products: Find single product

This dialog can be opened with a click on the **<Hardware>** button in the hierarchy overview window.

This is for example useful if you know the product number or name more precisely.

Simply enter a Hirschmann number or only a part of it into the search field on top of the list.

You can also enter a product name or a part of it

Start searching by either pressing the ENTER key or by clicking the **<Magnifier>** button.



A product list which matches your search key will be displayed immediately.

TID	Prod.code	Prod.name
2	942008001	SPIDER II 8TX PoE
2	942051001	SPIDER 5TX PD EEC
2	942051002	SPIDER 1TX/1FX-MM PD EEC
2	942051003	SPIDER 1TX/1FX-SM PD EEC
2	942059001	SPIDER Giga 2TX PoE EEC
2	942120001	SPIDER II 16TX EEC
2	942121001	SPIDER II 16TX/2DS-S EEC
2	942132001	SPIDER-SL-20-05T199999SY9HHHH
2	942132002	SPIDER-SL-20-08T199999SY9HHHH
2	942132003	SPIDER-SL-40-05T199999SY9HHHH
2	942132004	SPIDER-SL-40-08T199999SY9HHHH
2	942132005	SPIDER-SL-20-01T1M299999SY9HHHH
2	942132006	SPIDER-SL-20-01T1S299999SY9HHHH
2	942132007	SPIDER-SL-20-04T1M299999SY9HHHH
2	942132008	SPIDER-SL-20-04T1M499999SY9HHHH
2	942132009	SPIDER-SL-20-04T1S299999SY9HHHH
2	942132010	SPIDER-SL-20-06T1M299999SY9HHHH
2	942132011	SPIDER-SL-20-06T1S299999SY9HHHH
2	942132012	SPIDER-SL-20-06T1M2M299999SY9HHHH

Hit counter: 87

**i** The search key automatically is used with the so-called wildcards so that e.g. the input "Spider" will display all Spider products no matter what comes next after the key word "Spider".

**i** Open a product in a single view either with a double click or by selecting it in the list and the clicking the button with the green checkmark symbol.



You will again see this dialog in the view for the single hardware if you start searching for another product from there.

## Manual: Configuration & Product Info Tool Industrial Automation Solutions (IAS)

### Products: Product detail view

This dialog shows a single hardware product with these details which are divided into four blocks:

- Product data
- Services
- Customer data
- Actions

#### PRODUCT DATA

In this block you will find all important product data like product code, name, EAN code, delivery time etc.

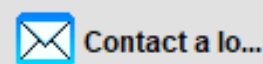
The name has a yellow background and can be double clicked.  
This will open a summary of the product data as a PDF file.  
In case the product is configurable the related configurator will be opened  
and the order code is expanded automatically.

#### SERVICES

This block displays a list of available services for this hardware product.  
Usually the most common services is already pre-selected.

#### CUSTOMER DATA

This block shows your address data and if you also have provided an email address in the application settings you can use the blue mail button which allows to create an email inquiry directly within this application which forewarded to the standard email application of your computer.



#### ACTIONS

Here you can search for another products by simply entering another product number or name or just a part of it into the search field and then clicking the button with the <Magnifier> symbol.



This opens the find single product dialog as explained on the previous page with a hit list where you can select the desired product. It will be displayed in the current dialog.

The <PDF> button generates a summary of the product as a PDF file.



The <eCatalog> button refers to the product page in the internet.  
This of course only is possible when you are online.



The <Clipboard> button copies some data to the clipboard  
for further use in another context.



The <Camera> button copies a screenshot to the clipboard.



The <Mail> button creates a product inquiry mail address to a Belden sales office.



The <Printer> and the <Calculator> buttons should be self explaining.





## Manual: Configuration & Product Info Tool Industrial Automation Solutions (IAS)

### Products: Product detail view

#### PRODUCT DATA (with reference to an alternative article or a successor)

If there is an alternative or a successor for an item, a message informs you of this and this display also appears in the header area of the of the article data. In addition, the old article is displayed in red and the successor in green.

Product data			<a href="#">Open the alternative or new product</a>
Product code	Predecessor or Successor	EAN-Code	
943221001	942132007	4002044218126	

An alternative to the current product is defined by the product management and should simply offer you another option that could also be considered. A successor is also defined by the product management and the last order and delivery date are also displayed.

This option is used in particular for the older Platform IV articles, which can now gradually be replaced by new Platform V articles.

#### Key for the status field:

- J >>>>** = new product since the previous release
- N <<>>** = normal product
- L <<<<** = expired product (please note the last order and the last delivery dates)

## Manual: Configuration & Product Info Tool Industrial Automation Solutions (IAS)

### Configurators: Similarities

The *Configuration & Product Info Tool Industrial Networking (INET)* configurators may initially appear to be different but they are very similar in structure and usage.

Basically there are always two options to check an order code:

#### Option 1

Assemble the desired product with the aid of the combo boxes or selection fields. Once you have filled in all mandatory fields click the **<Check Config !>** button.

Check Config !

If you start with the first parameter the options for many other parameters will be preset automatically.

#### Option 2

Click the **<Input Config !>** button, enter a valid order code in the input field and then click the **<Explode Config !>** button once.

Input Config !



The **<Check Config !>** button checks your configuration and an advisory message reports possible errors.

Once all parameters have been set correctly, the order code and the Hirschmann product number appear. Right next to them you will also find some so-called actions buttons:



**<Services>**

For selection of guarantee extensions, installations, etc.  
*Clicking the button once more will close the services again.*



**<PDF>**

Preview or print the configuration in clear words as a PDF document



**<Screenshot>**

Make a screen copy and copy it to the clipboard



**<Specs>**

Preview a simple text based description of the configuration in clear words



**<Clipboard>**

Copy order code and Hirschmann product number to the clipboard.  
*A double click on the order code or the Hirschmann number copies this one to the clipboard only.*



**<Inquiry>**

Creates an inquiry email in your mail program which you can modify to your needs before sending it. *This button appears in the area of your customer data.*



If the assembled configuration exists as a fixed Hirschmann product number you can open the product in the single product detail view with the magnifier symbol button.



Save the current configuration as "your" configuration by clicking the **<Safe>** button right next to the **<My configurations>** button. With this button you can retrieve your configurations afterwards.



The **<eCatalog>** button refers to the product page in the internet.  
This of course only is possible when you are online.

## Manual: Configuration & Product Info Tool Industrial Automation Solutions (IAS)

### Configurators: Similarities



Please note that a renewed code check is necessary whenever the order code displayed in the centre or on top of the dialog is shown in RED !

This is the case for example when a parameter in an existing code is changed !

Reset the dialog to the initial settings by clicking the **<Reset Config !>** button once.



You can reset single parameters in many configurators by simply double clicking the related combo box. By this other combo boxes will be updated and then might allow more selections. So you can change an already existing configuration without the need to reset the whole configurator.



Clicking the **<Services>** button displays a selection of services in the lower part of the dialog where normally your customer data is displayed. Usually the most common services is already pre-selected.



Please note that all buttons and many other components in this window provide a tool tip text which will be displayed as soon as you hover over them with the mouse cursor.

All Configurators show a button with a „reading glasses“ symbol.

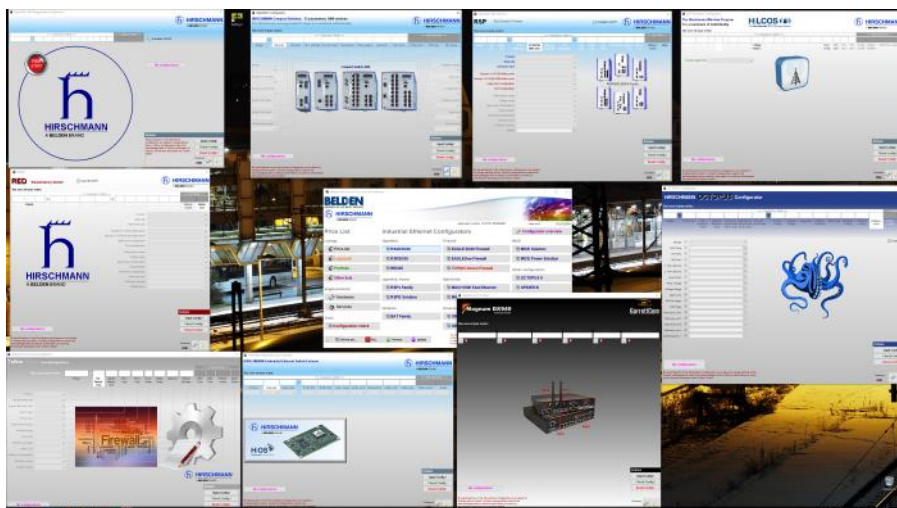
This button allows to open any other configurator from within a configurator window.

It can be used to easily compare different configurable products side by side on the screen.



It is also possible to open more than just two configurators at once, effectively there is no limit, provided the screen space is big enough. However, for more than two or three at once a 4K screen is required to really arrange the windows without overlapping or more than just one screen has to be connected to the computer.

The screenshot below shows this option on a 4K screen.





## Manual: Configuration & Product Info Tool Industrial Automation Solutions (IAS)

### Configurators: Similarities

#### References to a follow-up article

If a successor is defined for a configuration of any product series, then after clicking the button < **Check Config !** >, a message informs you and a green < **NEW** > button appears next to the action buttons.

Check Config !

NEW

#### Price list



#### Attention:

The product you have configured has restrictions regarding order and delivery availability.

Last Order Date: 2023-12-31 - Last Delivery Date: 2024-06-30

However, there is a reference to possible successor products.

To view these, please click on the button with the "green arrow" in the configurator window.

Ok

A successor is defined by the product management and the last order and delivery date are also displayed.

This option is used in particular for the older Platform IV articles, which can now be gradually replaced by new platform V articles.

Click on the green < **NEW** > button and another window opens parallel to the current configurator window with one or more successor configurations. Select a configuration here and note the text that is displayed at the bottom of the window after the selection.

NEW



#### Selection of successors

Here is a list of new products which are defined as successors to the variant which you have configured.  
Your old configuration currently is:

OpenRAIL RS

RS40-0009CCCCSDAEHHXX.X.

Select a row in the table and click on the EXPLODE button to open the order code of the successor product variant in its related configurator... a double click also works fine... :-)

Also take a look at the note which might be displayed below.

Product series	Configuration
OpenRAIL BOBCAT	BRS40-00120000-SFC??9HHSESXX.X.XX



Since the parameters for <Approvals / Declarations Part A> and for the <Software Level> cannot be converted 1:1 you have to select the desired values in the Bobcat configurator manually. So please ignore the warning messages when opening the Bobcat config



Explode !

Click on the < **Explode !** > button, or double-click on the entry in the list, and the window of the successor will open parallel to the current configurator window.



You can now arrange both configurator windows next to each other, so that you can easily compare the data of both products.

## Manual: Configuration & Product Info Tool Industrial Automation Solutions (IAS)

### Configurators: OpenRAIL (RS20, RS22, RS30, RS32, RS40)


This configurator uses standard combo boxes for the selection of the individual parameter values.



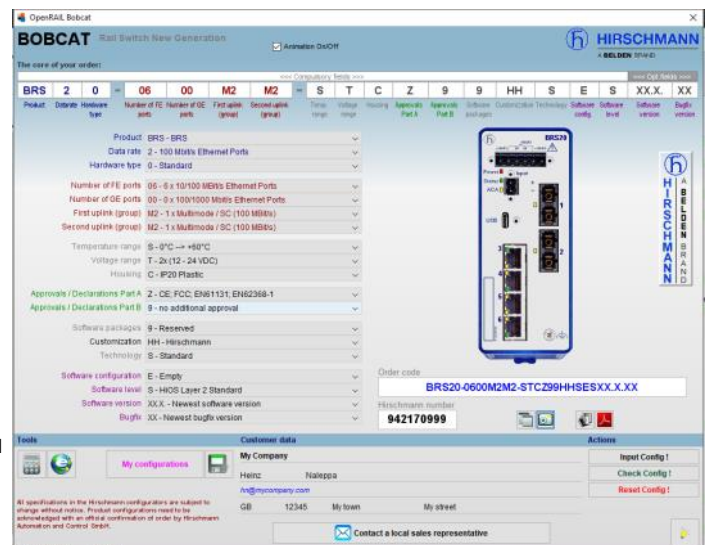
### Configurators: OpenRAIL Bobcat (BRS20 >>>> BRS56)

This configurator uses standard combo boxes for the selection of the individual parameter values.

You have to proceed with selecting parameter values until parameter no.10 (Housing) until the image of the product can be drawn !

 You can turn the animations on or off simply by using the check box right next to the code elements or on top of them.

The program reminds this setting and the next time you start it and use these configurators it automatically sets the animations to the last status.



## Manual: Configuration & Product Info Tool Industrial Automation Solutions (IAS)

### Configurators: OpenRAIL Power Family (RSP & RSPS)

This product family contains three variants:

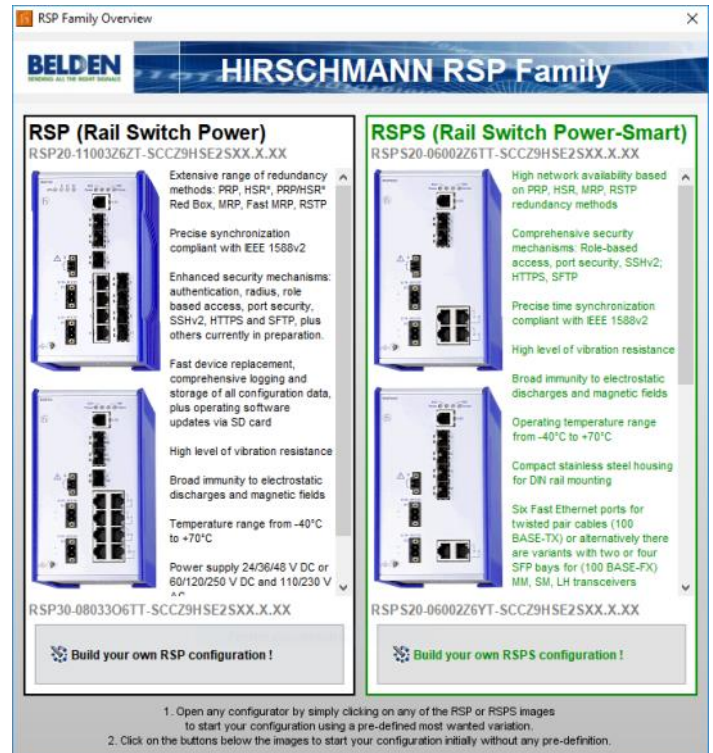
- **RSP** Rail Switch Power
- **RSPS** Rail Switch Power Smart


You can open them only via the RSP family window which is opened first of all.

Open any configurator by simply clicking on any of the RSP or RSPS images to start your configuration using a pre-defined most wanted variation.

Click on the buttons below the images to start your configuration initially without any pre-definition.

The configurators of this family all use standard combo boxes for the selection of the individual parameter values.



 The image of the switch will only be displayed after the selection of certain parameters which are different depending on the selection of the family member.

Product	Data rate	Hardware type	Number of 10/100 Mbit/s ports	Uplink port configuration	Port configuration	Temperature range	Voltage range	Approvals / Declarations	Customization	Software configuration	Software level	Software version	Bugfix
RSP - Rail Switch Power	2 - 10/100 Mbit/s ports	0 - Standard	11 - 11x 10/100 Mbit/s Ethernet ports	326 - 3x SFP slot (100 Mbit)	ZT - 4x SFP slot (100 Mbit); 4x (100Mbit) ...	S - Standard 0°C ... 60°C	CC - 2x 24/36/48 VDC (18 - 60VDC)	Z9 - CE, FCC, EN61131	HS - Standard	E - Enhanced encryption (>56 Bit, up to 2...)	2S - HIOS Layer 2 Standard	XX.X - Latest software version	XX - Latest bug fix version

RSP order code: **RSP20-1100326ZT-SCC29HSE2SXX.X.XX**

Hirschmann number: **942053999**

Customer data: Heinz, Naleppa, hn@mycompany.com, GB, 12345, My town, My street

Actions: Input Config!, Check Config!, Reset Config!



## Manual: Configuration & Product Info Tool Industrial Automation Solutions (IAS)

### Configurators: BAT Wireless (BAT-R, BAT450-F & BAT867-R)

This product family has three variants: **BAT-R, BAT450-F & BAT867-R**

You can select them from the family window.

These configurators use standard combo boxes for the selection of the individual parameter values.



You have to start with parameter no. 2. As soon as you have made a selection in any parameter many other parameters will be set with default values which mostly will fit your needs.

**BAT Wireless Family Overview**

**OpenBAT**  
BAT-REUWW9AC9A0799S999ZHX.XX.XXXX  
WLAN access points and clients of the BAT family for wireless industrial data transmission for the use in robust outdoor applications as well as in hazardous areas, due to the extended temperature range in the M12 connector for in- and outdoor applications in rough environment, as well as in hazardous areas.

**BAT450-F**  
BAT450-F Industrial Wireless LAN Access Points robust connection options include WLAN, Wireless Wide Area Network (WWAN), via LTE and Ethernet interface.  
Select from these top configurations:  

- BAT450-F Access point incl. accessory package
- BAT450-F Client version incl. accessory package
- BAT450-F Client version without accessory package

**BAT867-R**  
BAT867-REUWW9A099AT199L999ZHX.XX.XXXX  
BAT867-R Industrial WLAN access points and clients featuring single radio IEEE 802.11ac technology to transmit data up to 867 Mbps.  
Select from these top configurations:  

- BAT867-R Access point incl. accessory package
- BAT867-R Access point without accessory package
- BAT867-R Client version incl. accessory package
- BAT867-R Client version without accessory package

1. Open any configurator by simply clicking on any of the OpenBAT, BAT450-F or BAT867-R images to start your configuration using a pre-defined most wanted variation.  
2. Click on the buttons below the images to start your configuration initially without any pre-definition.

**BAT (Wireless) Configurator**  
The Hirschmann Wireless Program  
For a maximum of individuality  
The Hirschmann "BAT" Operating System

**BAT450-F**  
Country: EU, Model: BAT450-F, Client: A, Voltage: 24VDC, Temperature range: -40°C to +70°C, Software option 1: 9, Software option 2: 9, Software option 3: 9, Configuration: Z, Implementation: H, Software version: XXXX.XXXX - Current software...

**BAT867-R**  
Country: EU, Model: BAT867-R, Client: A, Voltage: 24VDC, Temperature range: -10°C to +60°C, Software option 1: 9, Software option 2: 9, Software option 3: 9, Configuration: B, Implementation: H, Software version: XXXX.XXXX - Current software...


**Customer data**  
My Company: Heinz Naleppa  
My town: 12345  
My street: My street

**BAT Order code**  
BAT450-FEUW99A999AT6V4T999ZHX.XX.XXXX  
Hirschmann number: 942142999

**BAT Order code**  
BAT867-REUWW9A099AT199L999ZHX.XX.XXXX  
Hirschmann number: 942183999

## Manual: Configuration & Product Info Tool Industrial Automation Solutions (IAS)

### Configurators: EAGLE Security Router (EAGLE20, EAGLE30)

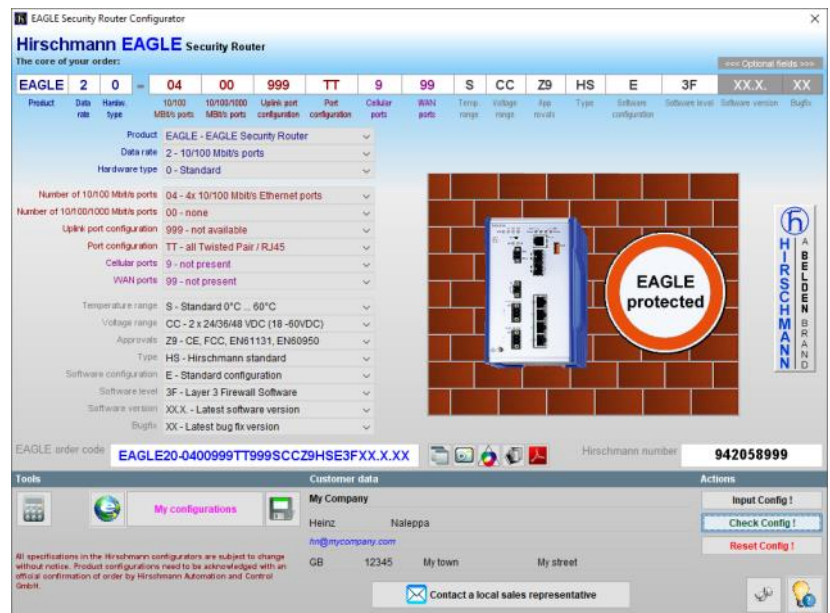
 This configurator uses standard combo boxes for the selection of the individual parameter values.

In the initial state you still can see a “fire” behind the “firewall”.

With each parameter you set the

firewall will be build higher and higher.

The final click onto the **< Check Config ! >** button closes the last hole in the wall with an image of an EAGLE switch.



The screenshot shows the Hirschmann EAGLE Security Router configurator. The interface includes a list of parameters on the left, a central image of a firewall with a 'fire' effect, and a right panel with configuration options. The 'Check Config!' button is visible at the bottom right.

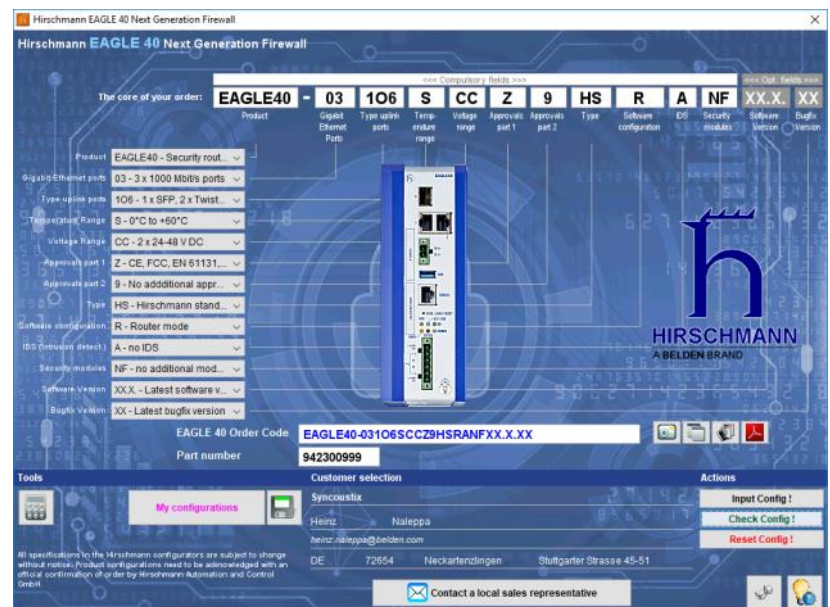
### Configurators: EAGLE Security Router (EAGLE40)

The EAGLE40 configurator starts with a grey background colour.

This remains grey until you click the **<Check Config! >** button to verify the configuration and to calculate the price.

If everything is correct and the price could be calculated the background changes and is now blue.

As soon as you change any parameter, the background turns grey again until you click the aforementioned Check button again.



The screenshot shows the Hirschmann EAGLE 40 Next Generation Firewall configurator. The interface includes a list of parameters on the left, a central image of a firewall, and a right panel with configuration options. The background is blue.



## Manual: Configuration & Product Info Tool Industrial Automation Solutions (IAS)

### Configurators: EAGLE One Security Router (EagleOne)

This configurator uses standard combo boxes for the selection of the individual parameter values.



Best choice is to start with parameter number one (product),

As soon as you have made a selection in parameter number one many other parameters will be set with default values which mostly will fit your needs.



You can reset single parameters by making a double click on the combo box. This sometimes is useful to avoid a complete reset of your current configuration if you have selected a parameter value which automatically influences other parameter values and then blocks the selection due to the product's component matrix.

### Configurators: Tofino Xenon Security Appliance (TofinoXe)

This configurator basically is the same one as for the Eagle One Security Router.

As soon as you select either "EagleOne" or "TofinoXe" in the first parameter the colour of the background changes to blue or red and also the exemplary product image is changed.

The button <Show Accessories> displays a list of loadable software modules which are available for this product.

The list is displayed at the bottom of the window instead of your customer data.

You can double click the products in the list to open the single product window to show all information about the selected LSM.

Close the list again with another click on this button.

All other features are equal to the EagleOne configurator.

## Manual: Configuration & Product Info Tool Industrial Automation Solutions (IAS)

### Configurators:

### MICE Switch (MS20, MS30), MICE Media Module (MM2, MM3) & MICE Backplane (MB20)

All the three configurators of the MICE family are using standard combo boxes for the selection of the individual parameter values.

All other functions are explained [here](#).



Please also remember that the 4 transceiver ports might be re-arranged automatically to ensure that the transceiver with the highest valence is placed in port no. 1 and the others are aligned by descending valence.

**MICE Switch Configurator**

**HIRSCHMANN Modular Switches** 12 parameters, 1000 versions  
The Hirschmann managed switch range for maximum individuality.

The core of your order:

MS20	08	00	S	A	Z	E	H	H	XX.X
Design	FE ports	SE ports	Temperature	Power supply	Approvals	SE version	Configuration	OEM type	SE release

Design: MS20 - Fast...  
Number of FE ports: 08 - 8 x 10/10...  
Number of SE ports: 00 - 0 x 1000...  
Temperature: S - Standard...  
Power supply: A - 18 - 32 V...  
MICE order code: MS20-0800SAZEHHXX.X  
Hirschmann number: 943435999

Tools: My configurations  
Customer data: My Company: Heinz Naleppa, hnz@mycompany.com, GB 12345, My town, My street  
Actions: Input Config!, Check Config!, Reset Config!

All specifications in the Hirschmann configurators are subject to change without notice. Product configurations need to be acknowledged with an official confirmation of order by Hirschmann Automation and Control GmbH.

**Mice Media Module Configurator**

**HIRSCHMANN Modular Switches** One platform, 1000 variations

The core of your order:

MM2	0	T1	T1	T1	T1	S	Z	H	H
Module	Technology	Port Type 1	Port Type 2	Port Type 3	Port Type 4	Temperature	Approvals	OEM type	OEM type

MM2 - Fast ET... 0 - Stands...  
Fast Ethernet 10/100 Standard  
Twisted-Pair / TX-/RXAS (10/100 Mbit)  
Twisted-Pair / TX-/RXAS (10/100 Mbit)  
Twisted-Pair / TX-/RXAS (10/100 Mbit)  
Twisted-Pair / TX-/RXAS (10/100 Mbit)  
Standard 0 °C to +60 °C CE  
Optional customer specific  
Optional customer specific  
MICE MEDIA Configurator Version 3  
Mice media order code: MM20-T1T1T1T1SZHH  
Hirschmann number: 943938999

Tools: My configurations  
Customer data: My Company: Heinz Naleppa, hnz@mycompany.com, GB 12345, My town, My street  
Actions: Input Config!, Check Config!, Reset Config!

All specifications in the Hirschmann configurators are subject to change without notice. Product configurations need to be acknowledged with an official confirmation of order by Hirschmann Automation and Control GmbH.

**Mice Backplane Configurator**

**HIRSCHMANN Modular Switches** One platform, 1000 variations

The core of your order:

MB20	2	S	A	H	H
Module	Media Slot	Temperature	Approvals	OEM type	OEM type

MB20 - Fast Ethernet...  
Fast Ethernet 10/100  
2 media module slots  
Standard 0 °C to +60 °C  
CE UL508, ISA 12.12.01 class1 div 2  
Optional customer specific  
Optional customer specific  
MICE BACKPLANE Configurator Version 3  
MICE backplane order code: MB20-2SAHH  
Hirschmann number: 943939999

Tools: My configurations  
Customer data: My Company: Heinz Naleppa, hnz@mycompany.com, GB 12345, My town, My street  
Actions: Input Config!, Check Config!, Reset Config!

All specifications in the Hirschmann configurators are subject to change without notice. Product configurations need to be acknowledged with an official confirmation of order by Hirschmann Automation and Control GmbH.



## Manual: Configuration & Product Info Tool Industrial Automation Solutions (IAS)

### Configurators: MSP Switch (MICE Switch Power: MSP30, MSP32)

This new configurator makes use of a little bit different concepts of operations

You can either click the **up arrow** or **down arrow** symbols on each parameter selection box to select the single values of the current parameter step by step.

Alternatively you can click on the **<List>** button below the box to show all values at once in a list instead.

Simply select the value from the list which you want to set.

The list closes automatically again. You can also close the list with a click on the **X** in the right top corner.



Use the right and left arrow symbols on the parameter selection boxes to toggle the display between parameters 1 to 7 respectively 7 to 13.



Please note that with a selection in parameter no. 7 (approvals) the toggle to the parameters 7 to 13 respectively to the parameters 1 to 7 is done automatically.

**SOLUTION** Option:

**< Solution >**

As soon as the order code is written in blue colour which indicates a successful code check you will find a green plus button and a red delete button below each slot below the product image.

You can use them to add media modules to the up to 7 slots of the MSP switch.

Click on a green plus button and the MICE media module power configurator opens where you can configure all media modules. If the MICE media module power configurator was opened from here then it also displays an additional button after you have made a successful code check which inserts the configured media module into the current MSP switch configuration.



The media module will be inserted into the slot for which you have clicked the green plus button.

Clicking the green plus button again respectively making a double click onto the image of the media module opens the MICE media module power configurator once again already exploding the current media module.

Remove a media module from a slot simply by clicking the red delete button.

If you need the same media module in other slots then you only need to configure it once in any slot you like. You then can simply drag and drop it to the other slots where you need it.

A click on the **<Solution>** button finally shows the complete MICE Power Switch solution which consists of at least one MSP switch and up to 7 media modules. A new window opens which shows the order codes and the Hirschmann product numbers of all parts of the solution.

See the screenshot on the next page.

## Manual: Configuration & Product Info Tool Industrial Automation Solutions (IAS)

### Configurators: MSP Switch (MICE Switch Power: MSP30, MSP32)



You can turn the animations on or off simply by using the check box right next to the code elements. The program reminds this setting and the next time you start it and use this configurator it automatically sets the animations to the last status.

### Configurators: MSP Media Module (MICE Switch Power: MSM2, MSM4)

This configurator uses the same concept of operations as the MICE Switch Power Configurator.  
(see page 23)

You can either click the **up arrow** or **down arrow** symbols on each parameter selection box to select the single values of the current parameter step by step.

Alternatively you can click on the **<List>** button below the box to show all values at once in a list instead.



Simply select the value from the list which you want to set.

The list closes automatically again. You can also close the list with a click on the **X** in the right top corner.



Please also remember that the 4 transceiver ports might be re-arranged automatically to ensure that the transceiver with the highest valence is placed in port no. 1 and the others are aligned by descending valence.

#### SOLUTION Option:

If the MICE media module power configurator was opened from the MICE switch power configurator then it also displays an additional button after you have made a successful code check which inserts the configured media module into the current MSP switch configuration.



Clicking the **<Solution>** button in the switch configurator finally opens the solution window which shows the order codes and the Hirschmann product numbers of all parts of the solution.



## Manual: Configuration & Product Info Tool Industrial Automation Solutions (IAS)

### Configurators: MACH1020/1030 (MAR1020,1022,1030,1032,1120,1122,1130,1132)

This configurator makes use of a little bit different concept of operations

You must start with parameter no. 1  
< **Switch** >.

First click on the parameter buttons to the left and then select the desired component(s) from the parameter component selection list box.

For parameter no. 3  
< **Ports FE 1-24 mod.** >  
you can also select from the port type list in the right window area to fill in the module slots in the switch image simply by using drag & drop.

Additionally you also use the port list which only is available with parameter no. 3 < **Ports FE 1-24 mod.** >.  
Here you can e.g. select all ports at once and fill them with the same type.

Please check the tool tip text which are available on all the screen elements to read more about their complete functionality.

The < **Check Config !** > button checks your configuration and an advisory message reports possible errors.  
Once all parameters have been set correctly, the order code and the Hirschmann order number appear above the picture. Additionally the switch is "turned on" which is visualised by flashing LEDs.



Some variants have the option "ports on front or backside".  
Use the < **Toggle** > button for the flip between front or backside view.



## Manual: Configuration & Product Info Tool Industrial Automation Solutions (IAS)

### Configurators: MACH1040 (MAR1040,1042,1140,1142)

This configurator makes use of a little bit different concept of operations

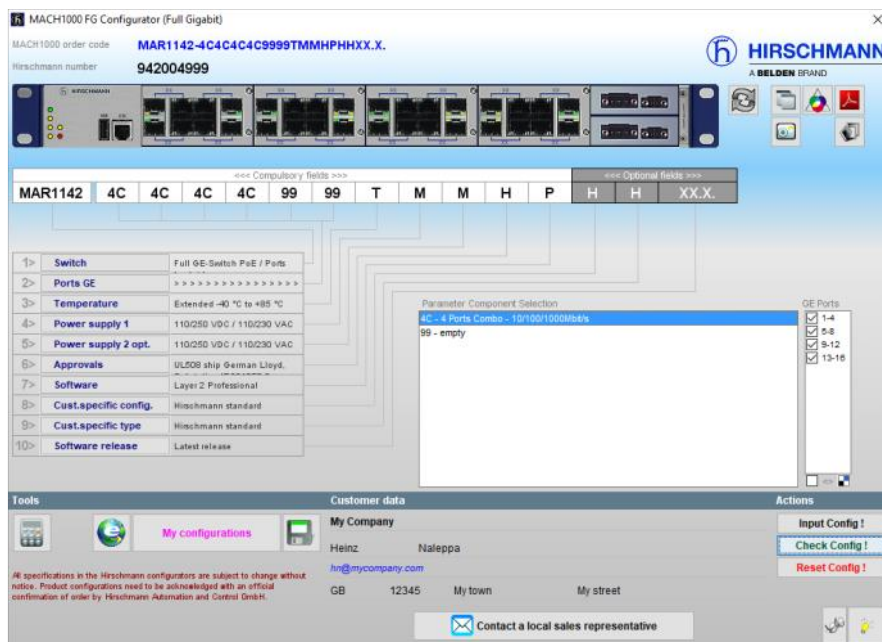
You must start with parameter no. 1 < **Switch** >.

First click on the parameter buttons to the left and then select the desired component(s) from the parameter component selection list box.

Additionally you also use the port list which only is available with parameter no. 2 < **Ports GE** >.

Here you can e.g. select all ports at once and fill them with the same type.

Please check the tool tip text which are available on all the screen elements to read more about their complete functionality.



The < **Check Config !** > button checks your configuration and an advisory message reports possible errors. Once all parameters have been set correctly, the order code and the Hirschmann order number appear above the picture. Additionally the switch is "turned on" which is visualised by flashing LEDs.



Some variants have the option "ports on front or backside". Use the < **Toggle** > button for the flip between front or backside view.





## Manual: Configuration & Product Info Tool Industrial Automation Solutions (IAS)

### Configurators: OpenRAIL Power Enhanced (RSPE)

This configurator uses standard combo boxes for the selection of the individual parameter values.



Best choice is to start with parameter number one (product),

As soon as you have made a selection in parameter number one many other parameters will be set with default values which mostly will fit your needs.



You can reset single parameters by making a double click on the combo box.

This sometimes is useful to avoid a complete reset of your current configuration if you have selected a parameter value which automatically influences other parameter values and then blocks the selection due to the product's component matrix.

**SOLUTION** Option: [< Solution >](#)

As soon as the order code is written in blue colour which indicates a successful code check you will find a green plus button and a red delete button below the two slots below the product image.



You can use them to add media modules to the two slots of the RSPE switch.

Click on a green plus button and the RSPM media module configurator opens where you can configure all media modules. If the RSPE media module configurator was opened from here then it also displays an additional button after you have made a successful code check which inserts the configured media module into the current RSPE switch configuration.

The media module will be inserted into the slot for which you have clicked the green plus button. Clicking the green plus button again respectively making a double click onto the image of the media module opens the RSPM media module configurator once again already exploding the current media module. Remove a media module from a slot simply by clicking the red delete button.

If you need the same media module in both slots then you only need to configure it once in one slot. You then can simply drag and drop it to the other slot.



Please note that not all configurations of a media module can be mounted in the first (left) slot. The configurator will display a message box in such a case and allows you to alternatively mount the module in the second (right) slot.

A click on the **<Solution>** button finally shows the complete RSPE/RSPM solution which consists of at least one RSPE switch and up to 2 media modules. A new window opens which shows the order codes and the Hirschmann product numbers of all parts of the solution.



Please close not used media module slots with the blank plate 942-131-001 RSPM-cover. You can click the **<RSPM-cover>** button to do this easily for the first, the second or both slots. Also in this case the **<Solution>** button finally will show the complete solution with the covers instead of media modules.

## Manual: Configuration & Product Info Tool Industrial Automation Solutions (IAS)

### Configurators: OpenRAIL Power Enhanced (RSPE)



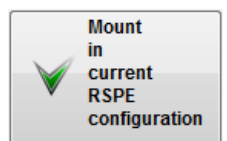
You can turn the animations on or off simply by using the related check box in the header. You also can turn the automatic filling of parameters on or off by using the related check box in the header. The program reminds this setting and the next time you start it and use this configurator it automatically sets the animations to the last status.

### Configurators: OpenRAIL Power Enhanced Media Modules (RSPM)

This configurator uses the same concept of operations as the RSPE Switch Power Enhanced Configurator.  
(see page 27)

#### SOLUTION Option:

If the RSPM media module configurator was opened from the RSPE switch power enhanced configurator then it also displays an additional button after you have made a successful code check which inserts the configured media module into the current RSPE switch configuration.



Clicking the **<Solution>** button in the switch configurator finally opens the solution window which shows the order codes and the Hirschmann product numbers of all parts of the solution.

## Manual: Configuration & Product Info Tool Industrial Automation Solutions (IAS)

### Configurators: GREYHOUND 1020/1030 Switch (GRS)

This configurator uses standard combo boxes for the selection of the individual parameter values.



Best choice is to start with parameter number one (product),

As soon as you have made a selection in parameter number one many other parameters will be set with default values which mostly will fit your needs.



You can reset single parameters by making a double click on the combo box.

This sometimes is useful to avoid a complete reset of your current configuration if you have selected a parameter value which automatically influences other parameter values and then blocks the selection due to the product's component matrix.

**SOLUTION** Option:

< Solution >

As soon as the order code is written in blue colour which indicates a successful code check you will find a green plus button and a red delete button below the media module slot below the product image.



You can use them to add one media module to the media module slot of the GREYHOUND switch.

Click on a green plus button and the GRM media module configurator opens where you can configure all media modules. If the GRM media module configurator was opened from here then it also displays an additional button after you have made a successful code check which inserts the configured media module into the current GREYHOUND switch configuration.

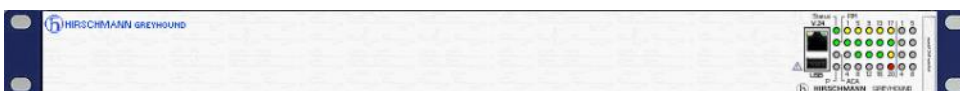
Clicking the green plus button again respectively making a double click onto the image of the media module opens the GRM media module configurator once again already exploding the current media module.

Remove the media module from the slot simply by clicking the red delete button.

A click on the <Solution> button finally shows the complete GRS/GRM solution which consists of at least one GREYHOUND switch and max. one media module. A new window opens which shows the order codes and the Hirschmann product numbers of the solution.



Some variants have the option "ports on front or backside". Use the <Toggle> button for the flip between front or backside view.





## Manual: Configuration & Product Info Tool Industrial Automation Solutions (IAS)

### Configurators: GREYHOUND 1020/1030 Media Modules (GRM)

This configurator uses the same concept of operations as the GREYHOUND SwitchConfigurator. (see page 29)



You can turn the automatic filling of parameters on or off by using the related check box in the header.

The program reminds this setting and the next time you start it and use this configurator it automatically sets the auto fill to the last status.

#### SOLUTION Option:

If the GRM media module configurator was opened from the GREYHOUND switch configurator then it also displays an additional button after you have made a successful code check which inserts the configured media module into the current GREYHOUND switch configuration.



Clicking the **<Solution>** button in the switch configurator finally opens the solution window which shows the order codes and the Hirschmann product numbers of all parts of the solution.



## Manual: Configuration & Product Info Tool Industrial Automation Solutions (IAS)

### Configurators: GREYHOUND 1040 Switch (GRS1040)

This configurator uses standard combo boxes for the selection of the individual parameter values.



Best choice is to start with parameter number one (product),

As soon as you have made a selection in parameter number one many other parameters will be set with default values which mostly will fit your needs.



You can reset single parameters by making a double click on the combo box.

This sometimes is useful to avoid a complete reset of your current configuration if you have selected a parameter value which automatically influences other parameter values and then blocks the selection due to the product's component matrix.

**SOLUTION** Option:

< Solution >



As soon as the order code is written in blue colour which indicates a successful code check you will find four green plus buttons and four red delete buttons below the product image.

You can use them to add two power supplies and two media modules to the power supply and media module slots of the GREYHOUND Full GE switch.

Click on a green plus button and the GSP power supply or the GMM media module configurator opens where you can configure all power supplies and media modules. If one of these configurators was opened from here then it also displays an additional button after you have made a successful code check which inserts the configured power supply or media module into the slot of the current GREYHOUND switch configuration which you have selected before.

Clicking a green plus button again respectively making a double click onto the images of the power supplies or media modules opens the appropriate configurator once again already exploding the current power supply or media module.

Remove a power supply or a media module from its slot simply by clicking the associated red delete button.



If you need the same power supply or media module in both slots then you only need to configure it once in any slot you like. You then can simply drag and drop it to the other slots where you need it.

A click on the <Solution> button finally shows the complete GRS/GMM/GPS solution which consists of at least one GREYHOUND switch and up to two power supplies and up to two media modules. A new window opens which shows the order codes, the Hirschmann numbers and the prices of all parts as well as the total price of the solution.



Some variants have the option "ports on front or backside". Use the <Toggle> button for the flip between front or backside view.



## Manual: Configuration & Product Info Tool Industrial Automation Solutions (IAS)

### Configurators: GREYHOUND 1040 Media Module (GMM) GREYHOUND 1040 Power Supply (GPS)

These configurators are using the same concept of operations as the GREYHOUND Full GE Switch Configurator. (see page 31)



You can turn the automatic filling of parameters on or off by using the related check box in the header.

The program reminds this setting and the next time you start it and use this configurator it automatically sets the auto fill to the last status.

#### SOLUTION Option:



If one of the two configurator was opened from the GREYHOUND Full GE switch configurator then is also displays an additional button after you have made a successful code check which inserts the configured power supply or media module into the slot of the current GREYHOUND Full GE switch configuration which you have selected before.

Clicking the <Solution> button in the switch configurator finally opens the solution window which shows the order codes and the Hirschmann product numbers of all parts of the solution.

GREYHOUND Full GE Media Module Configurator

GMM order code: **GMM20-MMMMMMSZ9HHS999.9.XX**

Hirschmann number: **942134999**

The core of your order:

Product	Date	PoE	Configuration ports 1 and 3	Configuration ports 5 and 7	Configuration ports 2 and 4	Configuration ports 6 and 8	Temp. range	Approvals	Customisation	Hardware configuration	Software configuration	Software version	Maintenance version
GMM - Greyhound Full GE Switch Media Module	2	0	MM - 2x MM FX, DSC, 100 Mbit/s	MM - 2x MM FX, DSC, 100 Mbit/s	MM - 2x MM FX, DSC, 100 Mbit/s	MM - 2x MM FX, DSC, 100 Mbit/s	S - 0°C - +60°C	Z9 - CE, FCC, EN61131, EN60950	HH - Hirschmann standard	S - Standard	9 - Without software configuration	99.9 - No software	XX - Latest maintenance version

Mount in current GRS configuration

Tools: My configurations

Customer data: My Company, Heinz, Naleppa, hn@mycompany.com, GB, 12345, My town, My street

Actions: Input Config!, Check Config!, Reset Config!

Contact a local sales representative

GREYHOUND Full GE Power Supply Configurator

GPS order code: **GPS3-PSZ9HH**

Hirschmann number: **942136999**

The core of your order:

Product	Hardware type	Voltage range	Temperature range	Approvals	Customisation
GPS - GREYHOUND Power supply unit	3 - PoE (PoE and switch)	P - 48 VDC (PoE) - 54 VDC (PoE+)	S - 0°C - +60°C	Z9 - CE, FCC, EN61131, EN60950	HH - Hirschmann Standard

Mount in current GRS configuration

Tools: My configur...

Customer data: My Company, Heinz, Naleppa, hn@mycompany.com, GB, 12345, My town, My street

Actions: Input Config!, Check Config!, Reset Config!

Contact a local sales representative

GREYHOUND Full GE Switch & Media Module & Power Supply Solution

Switch: Order code: **GRS1042-ATZSL00Z9HHSE2A99XX.XX**, Hirschmann number: **942135999**

Media Module 1: Order code: **GMM20-MMMMMMSZ9HHS999.9.XX**, Hirschmann number: **942134999**

Media Module 2: Order code: **GMM30-VMMTTTTSZ9HHS999.9.XX**, Hirschmann number: **942134999**

Power Supply 1: Order code: **GPS3-PSZ9HH**, Hirschmann number: **942136999**

Power Supply 2: Order code: **GPS1-CSZ9HH**, Hirschmann number: **942136001**

GRS/GMM/GPS Solution

Contact a local sales representative

## Manual: Configuration & Product Info Tool Industrial Automation Solutions (IAS)

### Configurators: GREYHOUND 105/106 Switch (GRS105/106)

This configurator uses standard combo boxes for the selection of the individual parameter values.



Best choice is to start with parameter number one (product),

As soon as you have made a selection in parameter number one many other parameters will be set with default values which mostly will fit your needs.



You can reset single parameters by making a double click on the combo box.

This sometimes is useful to avoid a complete reset of your current configuration if you have selected a parameter value which automatically influences other parameter values and then blocks the selection due to the product's component matrix.



## Manual: Configuration & Product Info Tool Industrial Automation Solutions (IAS)

### Configurators: Embedded Ethernet Switch Extreme (EESX20, EESX30)

This configurator uses standard combo boxes for the selection of the individual parameter values.

All other functions are explained [here](#).

### RED25 Redundancy Switch (RED25)

This configurator uses standard combo boxes for the selection of the individual parameter values.

All other functions are explained [here](#).

### SPIDER III Entry Level Switch (SPIDER-SL, SPIDER-PL)

This configurator uses standard combo boxes for the selection of the individual parameter values.

All other functions are explained [here](#).



## Manual: Configuration & Product Info Tool Industrial Automation Solutions (IAS)

### Configurators: OCTOPUS II

This configurator uses standard combo boxes for the selection of the individual parameter values.

An animated display of the housing, the front plate and the bottom plate is additionally used to show the parameters as they are selected progressively.


The configurator displays the outer housing elements after parameter no.3 has been selected.

The configurator also displays the left and right side of the housing top plate with the appropriate ports and also the bottom plate with the appropriate port types if uplinks are selected after parameters 4, 5 and 6 have been selected.

The individual parts of the housing, plates etc. are displayed as an exploded drawing until the **<Check Config !>** button is pressed.

If all parameters have been selected the product is shown assembled (solid), i.e. the individual elements are finally shown without spaces. Assembly is also confirmed acoustically if the speakers on your computer are turned on.

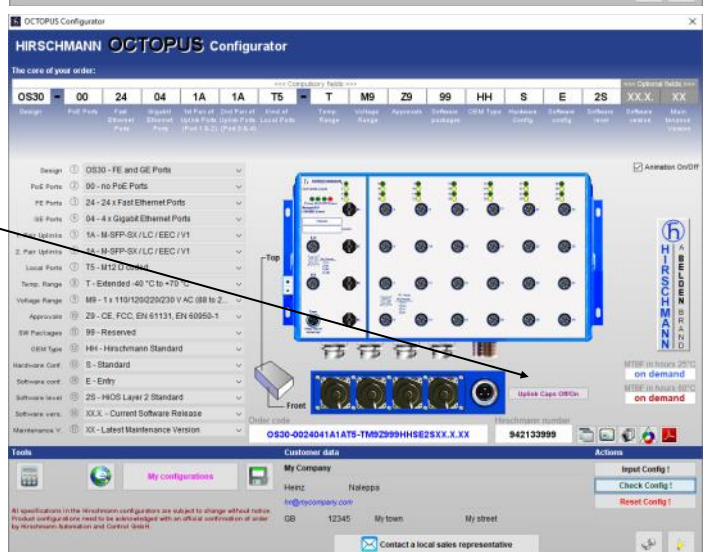
If a parameter is changed the product is "exploded" again and the order code is shown in red.

 If an OCTOPUS II with GE ports is configured the bottom plate with the uplink ports and if relevant the power connector (depending on parameter 9) appears below the housing after the **<Check Config !>** button is clicked.

The uplinks caps can be removed and replaced with the **<Uplink caps on/off>** button.

The screenshot function (see also page 16) offers not only options for the entire screen, product etc. but also whether the front plate or just the bottom plate or both should be copied to the clipboard.

All other OCTOPUS II configurator functions are explained [here](#).



## Manual: Configuration & Product Info Tool Industrial Automation Solutions (IAS)

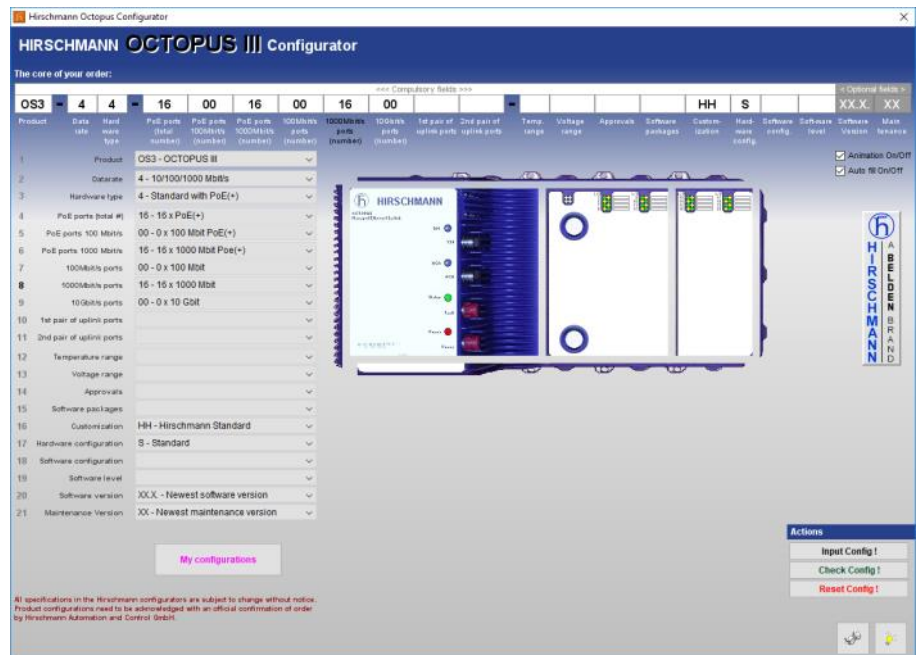
### Configurators: OCTOPUS III

This configurator uses standard combo boxes for the selection of the individual parameter values.

An animated display of the housing, the front plate and the bottom plate is additionally used to show the parameters as they are selected progressively.

The configurator displays the outer housing elements after the parameter no. 4 to 9 have been selected.

This can be seen from the fact that the side parts and the body are still drawn with gaps.



The individual parts of the housing, plates etc. are displayed as an exploded drawing until the **<Check Config !>** button is pressed.

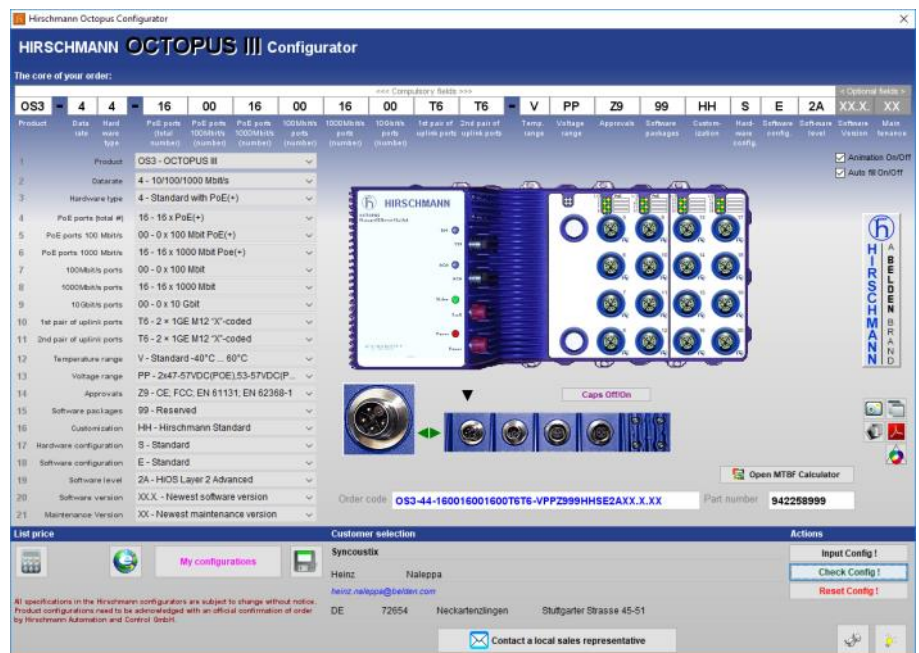
If all parameters have been selected the product is shown assembled (solid), i.e. the individual elements are finally shown without spaces.

Assembly is also confirmed acoustically if the speakers on your computer are turned on.

If a parameter is changed the product is “exploded” again and the order code is shown in red.

All port caps can be removed and replaced with the **<Caps on/off>** button.

The screenshot function offers not only options for the entire screen, product etc. but also whether the front plate or just the bottom plate or both should be copied to the clipboard.



All other OCTOPUS III configurator functions are explained on pages [here](#).



## Manual: Configuration & Product Info Tool Industrial Automation Solutions (IAS)

### Configurators: MIPP Modular Industrial Patch Panel

This configurator has its own concept of operations.

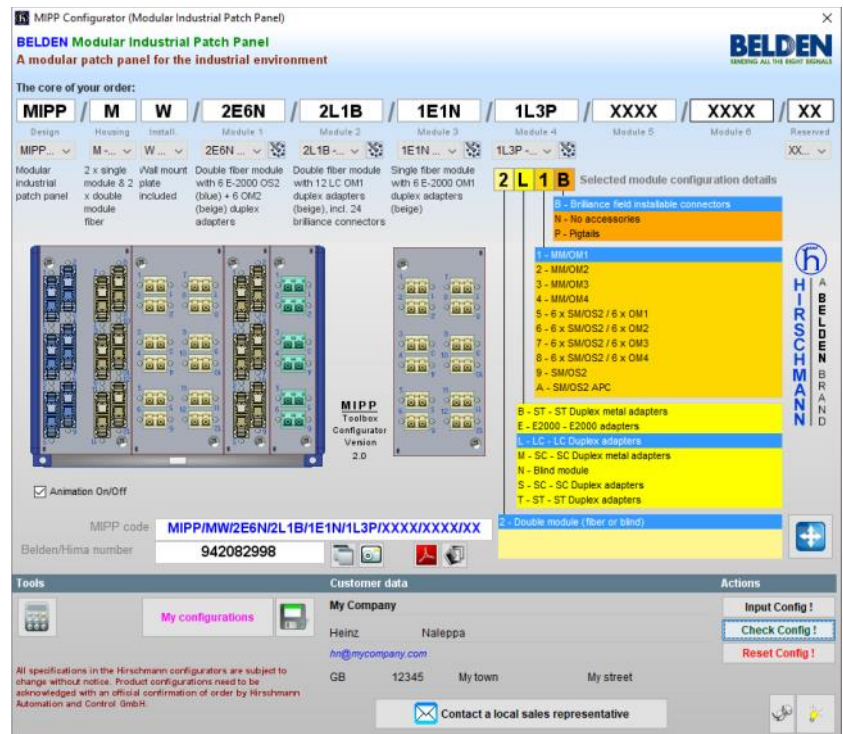
The first parameter is already set to **MIPP** because here only this one selection is possible.

The same applies for the last parameter where **XX** currently is the only selection option.

You can make your selection for the six module parameters either by selecting an entry from the combo boxes or you might use the **<Module Builder>** button right next to the combo boxes.

It shows 4 lists in the right part of the window which represent the four sub parameters of one module.

Start your selection with the list at the bottom which is related to the first of the four sub parameters.



As soon as you have made your choice the other 3 lists will show valid values only which correspond to your selection in the first list.

Make your choice for the other 3 sub parameters now and then click the button with the blue arrow symbols to append the current module configuration into the current product configuration.

An animation (can be turned off) now shows you how and where the module will be installed in the housing. So you can see the product as it will come out of the box later.

Once a module is shown in the housing the "Module Builder" opens automatically as soon as the user clicks on the picture of the module and shows you the details of the module again.

To reset a module completely simply make a double click on it's combo box.



You can turn the animations on or off simply by using the check box right below the picture. The program reminds this setting and the next time you start it and use this configurator it automatically sets the animations to the last status.

It is also possible to drag modules via drag & drop from one module slot to another one.

Once you have selected a module for e.g. slot 1 and you need the same module in the slots 2 to 6, you can simply drag the image of the slot no. 1 and drop it on the module selection combo boxes no. 2 to no. 6 subsequently. The drop on the slot associated combo box is necessary as long as the module slot on which the drop is made still was not yet selected and therefore still is empty.

However, if eg. all slot are already filled with modules and you want to switch the sequence of the modules you can drag and drop from one module image to any other module image directly. With the drop event the associated combo box is set to correct value and also the code elements and text fields are updated automatically.

As usual the configurator then requires to check the new configuration again with a simple click on the **<CHECK CONFIG !>** button to update the price etc.



## Manual: Configuration & Product Info Tool Industrial Automation Solutions (IAS)

### Application: Check products

This tool allows you to verify multiple order codes of the various freely configurable products series or standard products at once.

**Step 1:** You can provide the order codes or products which should be verified in different ways:

#### A: As a list in an Excel file

Click the **“Step 1: Open Excel”** button. An Excel file opens and it has exactly two columns (A: Product code, B: Order code). Type in either a Hirschmann product code in column A or an order code of a freely configurable product in column B. Now just save the file in MS-Excel.

Then click the **“Step 2: Load Excel file”** button to continue.

The application now imports the data and displays it in the table.

#### B: As list via the clipboard

No matter from where you have copied product and/or order codes into the clipboard, as long as they are arranged in two columns and as rows flush in a sequence you can import this data with just a click on the “clipboard” button.

#### C: Single input

If you just have few individual product and/or order codes then first click on the button with the “green arrow down” symbol to make the buttons for step 2 visible.

Click on the button with the little green **<plus>** symbol. The application now creates a new line in the table in which you can type in an order code into the first column or a product code into the third column.

You can delete single lines or multiple marked lines from the table by clicking on the button with the little red **<minus>** symbol.

A	B
Product code	Order code
943824002	
933847421	
	RS22-0800M2M2SPAHEFXX.X
	GRS1020-8T8ZSMMV9HHSE2SXX.X.XX
	EagleOne-0200M2T1SDDUY0000HHEXX.X.XX
942003001	

Order code orig.	Series name	Hm code	Valid	Corrected	Order code corr.
RS22-0800M2M2SPAHEFXX.X		943824002	<input type="checkbox"/>	<input type="checkbox"/>	
GRS1020-8T8ZSMMV9HHSE2SXX.X.XX		933847421	<input type="checkbox"/>	<input type="checkbox"/>	
EagleOne-0200M2T1SDDUY0000HHEXX.X.XX			<input type="checkbox"/>	<input type="checkbox"/>	
		942003001	<input type="checkbox"/>	<input type="checkbox"/>	



Clicking the button with the “green arrow down” symbol also allows you to skip step 1 if you want to import from the Excel file again without the need to create the template in step 1 again and again. By this you can change the template, add, remove or update the data of it and you do not need to create your source data again and again.

## Manual: Configuration & Product Info Tool Industrial Automation Solutions (IAS)

### Application: Check products

#### Step 2: Check and enrich data

Click on the button **<Step 3: Check>** to execute the verification.

The execution is visualised with two progress bars. Based on the number of records the execution can take up several minutes. As soon as the process has finished you will be prompted with a message box.

The result contains the following information for each product or order code: The related series name, the Hirschmann product number and a check box to show whether the check was successful or not.

Order code orig.	Series name	Hima code	Valid	Corrected	Order code corr.
SPIDER STX	Standard product	943824002	<input checked="" type="checkbox"/>	<input type="checkbox"/>	
RS22-0800M25PAEHFXX	OpenRAIL RS	933647421	<input checked="" type="checkbox"/>	<input type="checkbox"/>	
GRS1020-8T8ZSMV9WHSE25XX	GREYROUND Swit.	942123204	<input checked="" type="checkbox"/>	<input type="checkbox"/>	
EagleOne-0200M2T1SDDUY000HHEXX	EAGLE One (Sec.	942103004	<input checked="" type="checkbox"/>	<input type="checkbox"/>	
MACH104-20TX-F	Standard product	942003001	<input checked="" type="checkbox"/>	<input type="checkbox"/>	

Records which could not be checked at all, because the product code or the order code structure could not be detected, are not marked. Product or order codes which could be checked but which are either invalid product numbers or order codes are marked but they show "invalid code" in the series name column.

Order codes which could be checked successfully but which do not have the full code syntax are marked in the column "Corrected" and show the completed order code in the last column.

Standard product codes for which the check routine was able to find a price via the product code show the word "Standard product" in the column "series name".

The name of the standard products is completed in the first column if this column was empty when you have imported the data. If there was a wrong product name in the first column from the import it will not be changed but the correction marker will be set and the correct product name is shown in the last column.


#### Step 3: Export data

You can export the enriched list as Excel file finally.

Click on the button **<Step 4: Export as Excel file>** and type in a file name.

You can open this file later in MS-Excel again.

Clicking the **<Reset screen>** button clears the table and re-initialises the dialog.

 Double clicking any row in the column series name either opens the related configurator of an order code or the single price information window if there is a standard product in the selected record.

## Manual: Configuration & Product Info Tool Industrial Automation Solutions (IAS)

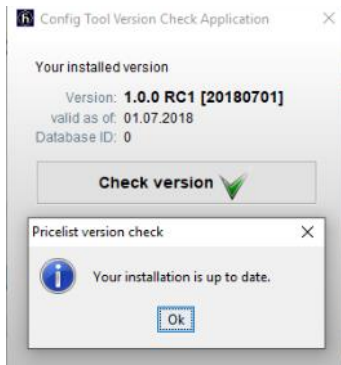
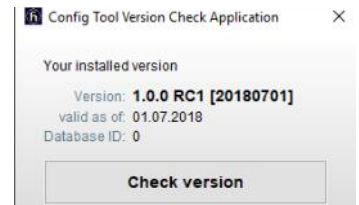
### Version Check Application

A version check of the application is normally performed by the JAVA automatically on its own. However, this might not work well on each computer under all circumstances due to e.g. special settings of the firewall or your anti virus software.

That's why the application offers an own version check which can be launched from the main overview by clicking the **<Version>** button.

A dialog will be displayed looking like the screenshot to the right.

Click the **<Check version>** button.

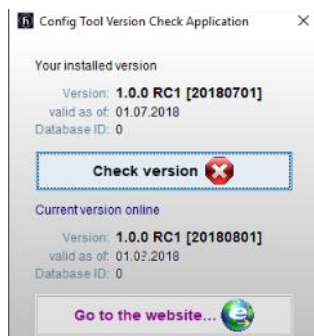
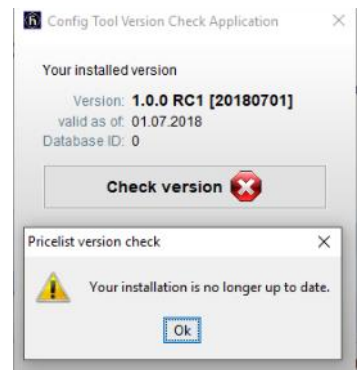


If your computer is connected with the Internet the application now fetches the actual version identifier from the BELDEN website. Best case is that your installed version is up to date which will be indicated by a message box.



The icon on the **<Check version>** button then will be changed to a green check mark.

If the version check detects that your installed version is no longer up to date you also will be prompted with an appropriate message box and the icon of the **<Check version>** button then will be changed to a red cross.



After the confirmation of the message box you will now see your installed version above the **<Check version>** button and below the button the actual version which is available online.

With a click on the **<Go to the website...>** button the application will be closed. Then you will be routed to the BELDEN website from where you can download the latest version right now. Your current installation will overwritten automatically.

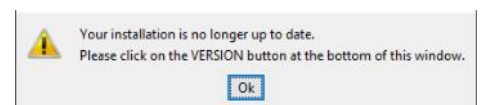
If the version check should fail due to e.g. a missing internet connection you will be prompted with appropriate information messages.



The version check is also performed during the start up of the application in silent mode. It displays this dialog in case your installed version is out of date.



If you are not connected to the internet during the start up of the application then the version check routine will not show any error message in silent mode.



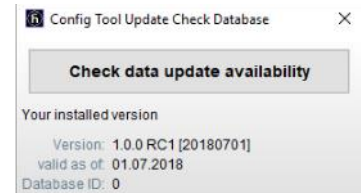


## Manual: Configuration & Product Info Tool Industrial Automation Solutions (IAS)

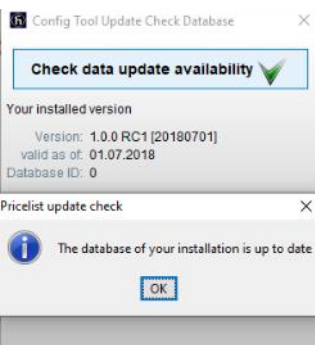
### Update Check Database

The application uses a so-called “embedded” database which can be updated independent of the application itself. Therefore it is no more necessary to install a complete new version for just content based updates and the application can be held actual in shorter intervals.

Execute the database update check by clicking the **<Update>** button on the main screen. A dialog will be displayed looking like the screenshot to the right. The most important value is the number in the field “Database ID”. Click the **<Check data update availability>** button.

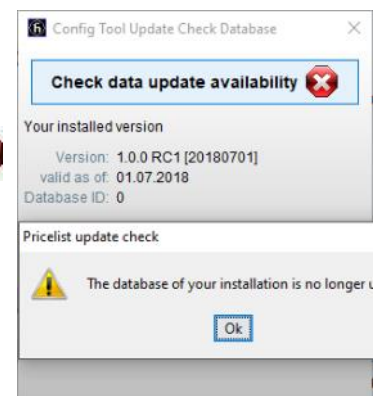


If your computer is connected with the Internet the application now fetches the actual database ID from the BELDEN website. Best case is that the database of your installed version is up to date which will be indicated by a message box.



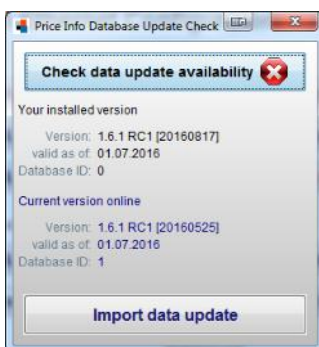
The icon on the **<Check data update availability>** button will then be changed to a green check mark.

If the update check detects that the database ID is no longer up to date you also will be prompted with an appropriate message box and the icon of the **<Check data update availability>** button will be changed to a red cross.



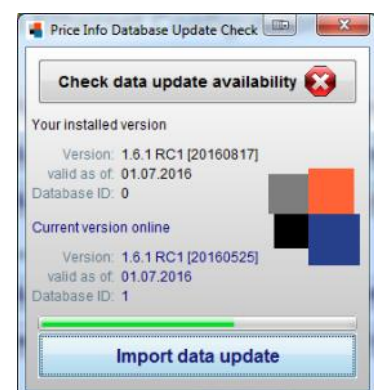
After the confirmation of the message box you will now see the database ID of your installed version below the **<Check data update availability>** button and below this one you will see the actual ID which is available online.

Clicking the **<Import data update>** button will start the import of the new data into the embedded database.



The import process is visualised by a progress bar and shows a dialog at the end after a successful data import.

If the import should fail due to e.g. a missing internet connection you will be prompted with appropriate information messages.



The database update check routine is also performed during the start up of the application in silent mode. It displays this dialog in case your installed database is out of date.



If you are not connected to the internet during the start up of the application then the database update check routine will not show any error message in silent mode.



## Manual: **Configuration & Product Info Tool Industrial Automation Solutions (IAS)**

---

### **Uninstall**

Uninstalling the application:

- Open "Program and functions" from the Windows control panel.
- Select "Belden Config Tool..." from the list and click "Deinstallation".
- Finally delete the folder „**configtool**“ which you will find in your Windows user data folder. This folder was used to save your user settings.

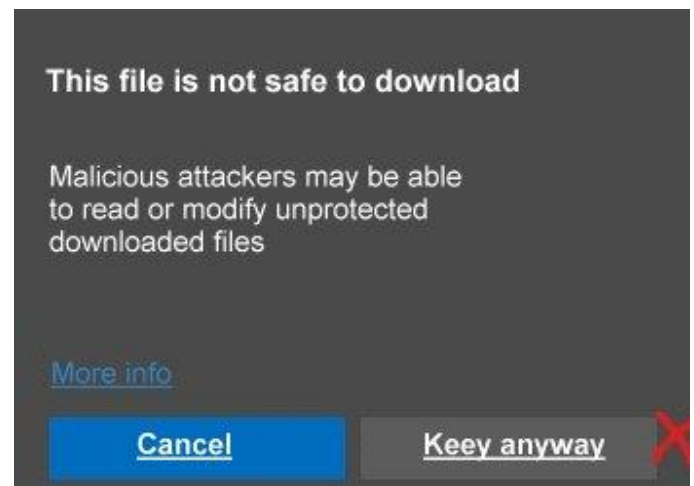
## Manual: Configuration & Product Info Tool Industrial Automation Solutions (IAS)

### F.A.Q.:

#### The download of the application is blocked in the browser

Depending on the browser and the security settings of the browser, it may happen that the download of the application is blocked by the browser even though the application has a valid security certificate.

If the browser displays this dialog, please click on the three dots ... and select **"Keep"** from the menu. In the dialog that follows, click on the **"Keep anyway"** button.



If after the download the Microsoft Defender blocks the execution of the setup, the following dialog appears:

Click here on the underlined text **"More information"** and in the following dialog click on the **"Run anyway"** button.





## Manual: **Configuration & Product Info Tool Industrial Automation Solutions (IAS)**

---

### **F.A.Q.**

#### **The application does not start**

##### **1. Advice** (Windows setup)

- Remove the application using the Windows control panel "Programs and functions"
- Download the setup file from the website and reinstall

##### **2. Advice**

- Try to launch the ActionDemo example from:
- <http://docs.oracle.com/javase/tutorialJWS/samples/uiswing/ActionDemoProject/ActionDemo.jnlp>
- Java 7 is required.
- If the application does not start then there is a local system issue.
- In that case please contact your company IT support.

##### **3. Advice**

- Set Java to open the console.
- Start the application.
- Copy the console text into a mail and send it to: [Heinz.Naleppa@belden.com](mailto:Heinz.Naleppa@belden.com)
- If you don't know how to open the JAVA console please contact your company IT support.

##### **4. Advice**

If you need to run the application on another operating system than Windows, please contact [Heinz.Naleppa@belden.com](mailto:Heinz.Naleppa@belden.com).

## Manual: **Configuration & Product Info Tool Industrial Automation Solutions (IAS)**

---

### **F.A.Q.**

**The application does not start with JAVA version 8 update 25 or higher** (only for Windows installations)

If you have JAVA 8 update 25 or higher installed on your computer the application might not start correctly.

An error message with a wording like this might appear:

*"...could not find JAVA VM"*

In this case, please contact your BELDEN sales representative who will contact the app developer to solve this problem.

**The application is only displayed very small on very high-resolution screens**  
(only for Windows installations)

To solve this display problem, you can try to adjust the scaling of the application.

Quit the application before you continue.

Find the file "*ConfigTool.exe*" in the directory  
*C:\Program Files (x86)\Hirschmann Config Tool*  
and right-click on the file and select "*Properties*" from the context menu.

In the properties window, select the "*Compatibility*" tab.

Under the settings, check the box next to "*Override behaviour at high DPI scaling*"  
and select the **System** under "*Scaling carried out by:*".

Confirm with OK and restart the application to check whether the display is now larger.

## Manual: **Configuration & Product Info Tool Industrial Automation Solutions (IAS)**

---

### **F.A.Q.**

#### **An error message is displayed that the database is offline or corrupted.**

This usually is caused by closing a laptop manually or if a workstation is falling into sleep mode automatically as long as the application is running.

When reopening the laptop or coming back from sleep mode the application is not able to connect to the database again and if you then quit the application the database remains locked.

Trying now to start the application again it fails with the message as mentioned above.

To solve this without having to reinstall the whole application simply open the task manager and kill the process "javaw.exe \*32" or "javaw.exe \*64"

This resolves the database lock and then a restart of the application usually is working well again.

If this does not resolve the problem you can try to delete these files in the folder „**configtool**“:

- CtData.h2.db
- CTData.lock.db
- CTData.trace.db

You will find the folder “configtool” in your Windows user data folder.  
This forces the application to create the database anew.

If this does not help to fix the problem then delete the folder “configtool” to also remove eventually damaged user data. You then have to type in your user data with the next start of the application.