

DataConnect System

PRODUCT BULLETIN 

The Cost-Effective, Standards-Compliant Cabling System

The DataConnect System is cost-effective while also meeting performance standards for typical voice and data applications in various markets, including K-12, multi-site retail and government.

The product family includes keystone-style RJ45 jack modules, pre-loaded patch panels, patch cords and horizontal cabling options for Category 5e, Category 6 and Category 6A systems.



Benefits at a Glance

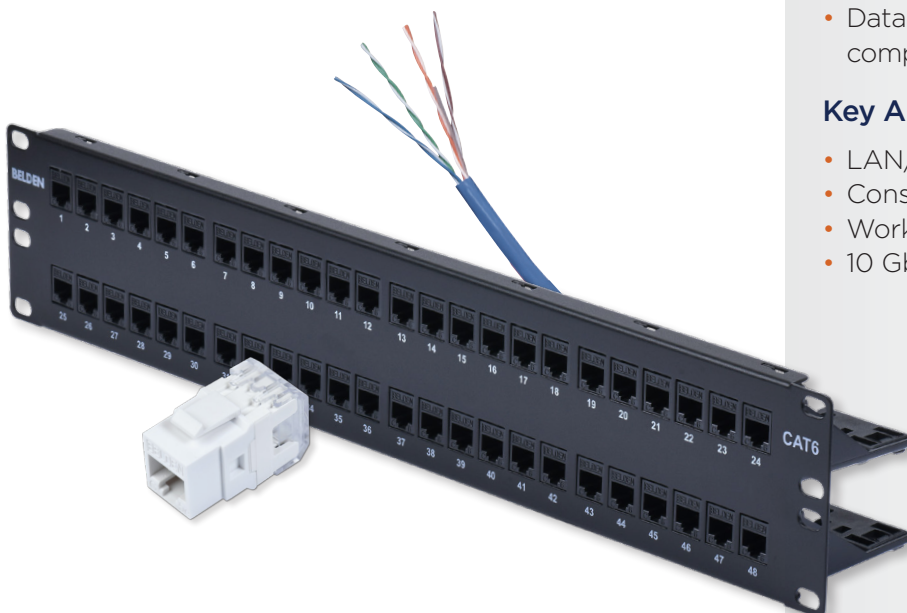
- Reduce installation costs through cost-effective components
- Provide reliable network performance
- Support up to PoE++
- System warranty covers cable and connectivity

Key Features

- Cables designed for familiar punch-down termination with DataConnect Jacks
- DataConnect Jacks and Patch Panels compatible with keystone footprint

Key Applications

- LAN/telecommunications rooms
- Consolidation points
- Work areas
- 10 Gb/s systems



Ordering Information

DataConnect Jacks

Description	Category 5e		Category 6		Category 6A	
	Single	Bulk	Single	Bulk	Single	Bulk
Black	DC5MJKUBK-S1	DC5MJKUBK-B24	DC6MJKUBK-S1	DC6MJKUBK-B24	DCAMJKUBK-S1	DCAMJKUBK-B24
Electrical White	DC5MJKUEW-S1	DC5MJKUEW-B24	DC6MJKUEW-S1	DC6MJKUEW-B24	DCAMJKUEW-S1	DCAMJKUEW-B24
Gray	DC5MJKUGY-S1	DC5MJKUGY-B24	DC6MJKUGY-S1	DC6MJKUGY-B24	DCAMJKUGY-S1	DCAMJKUGY-B24
Purple	DC5MJKUPR-S1	DC5MJKUPR-B24	DC6MJKUPR-S1	DC6MJKUPR-B24	DCAMJKUPR-S1	DCAMJKUPR-B24
Red	DC5MJKURD-S1	DC5MJKURD-B24	DC6MJKURD-S1	DC6MJKURD-B24	DCAMJKURD-S1	DCAMJKURD-B24
Yellow	DC5MJKUYL-S1	DC5MJKUYL-B24	DC6MJKUYL-S1	DC6MJKUYL-B24	DCAMJKUYL-S1	DCAMJKUYL-B24
Blue	DC5MJKUBL-S1	DC5MJKUBL-B24	DC6MJKUBL-S1	DC6MJKUBL-B24	DCAMJKUBL-S1	DCAMJKUBL-B24
Green	DC5MJKUGN-S1	DC5MJKUGN-B24	DC6MJKUGN-S1	DC6MJKUGN-B24	DCAMJKUGN-S1	DCAMJKUGN-B24
Ivory	DC5MJKUIV-S1	DC5MJKUIV-B24	DC6MJKUIV-S1	DC6MJKUIV-B24	DCAMJKUIV-S1	DCAMJKUIV-B24
Orange	DC5MJKUOR-S1	DC5MJKUOR-B24	DC6MJKUOR-S1	DC6MJKUOR-B24	DCAMJKUOR-S1	DCAMJKUOR-B24
DataConnect Shielded Jacks						
Shielded	DC5MJKSME-S1	DC5MJKSME-B24	DC6MJKSME-S1	DC6MJKSME-B24	DCAMJKSME-S1	DCAMJKSME-B24

Available in single (-S1) or bulk (-B24) packaging.

DataConnect Patch Panels

Description	Category 5e	Category 6	Category 6A
DataConnect Patch Panel, Flat, 24-Port, 1U (Preloaded)	DC5PPF1U24BK	DC6PPF1U24BK	DCAPPF1U24BK
DataConnect Patch Panel, Flat, 48-Port, 2U (Preloaded)	DC5PPF2U48BK	DC6PPF2U48BK	DCAPPF2U48BK

DataConnect Patch Cords

Description	Category 5e	Category 6	Category 6A
DataConnect Cables, UTP, Nonbonded-Pair, T568A/B, CM			
Blue	3 ft (0.91 m)	C543106003	C643106003
	5 ft (1.52 m)	C543106005	C643106005
	7 ft (2.13 m)	C543106007	C643106007
	10 ft (3.05 m)	C543106010	C643106010
Gray	3 ft (0.91 m)	C543108003	C643108003
	5 ft (1.52 m)	C543108005	C643108005
	7 ft (2.13 m)	C543108007	C643108007
	10 ft (3.05 m)	C543108010	C643108010
White	3 ft (0.91 m)	C543109003	C643109003
	5 ft (1.52 m)	C543109005	C643109005
	7 ft (2.13 m)	C543109007	C643109007
	10 ft (3.05 m)	C543109010	C643109010
Black	3 ft (0.91 m)	C543100003	C643100003
	5 ft (1.52 m)	C543100005	C643100005
	7 ft (2.13 m)	C543100007	C643100007
	10 ft (3.05 m)	C543100010	C643100010

Other colors available, please contact us for more information.

DataConnect Cables

Description	Category 5e	Category 6	Category 6A
DataConnect Cables, UTP, Plenum-CMP			
Blue	1000 ft (305 m)	1585A D15U1000	D6UP D15U1000
Gray	1000 ft (305 m)	1585A 008U1000	D6UP 008U1000
White	1000 ft (305 m)	1585A 009U1000	D6UP 009U1000
Black	1000 ft (305 m)	1585A 010U1000	D6UP 010U1000
DataConnect Cables, UTP, Riser-CMR			
Blue	1000 ft (305 m)	1583A 006U1000	D6UR 006U1000
Gray	1000 ft (305 m)	1583A 008U1000	D6UR 008U1000
White	1000 ft (305 m)	1583A 009U1000	D6UR 009U1000
Black	1000 ft (305 m)	1583A 010U1000	D6UR 010U1000
DataConnect Cables, F/UTP, Plenum-CMP			
Blue	1000 ft (305 m)	D5FP D15U1000	D6FP D15U1000
Gray	1000 ft (305 m)	D5FP 008U1000	D6FP 008U1000
White	1000 ft (305 m)	D5FP 009U1000	D6FP 009U1000
Black	1000 ft (305 m)	D5FP 010U1000	D6FP 010U1000
DataConnect Cables, F/UTP, Riser-CMR			
Blue	1000 ft (305 m)	D5FR 006U1000	D6FR 006U1000
Gray	1000 ft (305 m)	D5FR 008U1000	D6FR 008U1000
White	1000 ft (305 m)	D5FR 009U1000	D6FR 009U1000
Black	1000 ft (305 m)	D5FR 010U1000	D6FR 010U1000

Other colors available, please contact us for more information.



© 2024 | Belden and its affiliated companies claim and reserves all rights to its graphic images and text, trade names and trademarks, logos, service names, and similar proprietary marks, and any other intellectual property rights associated with this publication. BELDEN® and other distinctive identifiers of Belden and its affiliated companies as used herein are or may be pending or registered or unregistered trademarks of Belden, or its affiliates, in the United States and/or other jurisdictions throughout the world. Belden's trade names, trademarks, logos, service names, and similar proprietary marks shall not be reprinted or displayed without Belden's or its affiliated companies' permission and/or in any form inconsistent with Belden's business interests. Belden reserves the right to demand the discontinuation of any improper use at any time.