

This document will give you step-by-step instructions on how to set up and connect your Provizе® Explorer to the Provizе Suite.

Provizе® Explorer simplifies the device commissioning process by automatically detecting uncommissioned devices and facilitating the configuration of management IP addresses and credentials. This software streamlines the initial setup of IP addresses and credentials through easy-to-use software. Moreover, it enhances security by verifying device security certificates and enabling the configuration of initial security settings.

The set up will take approximately 20 to 30 minutes.

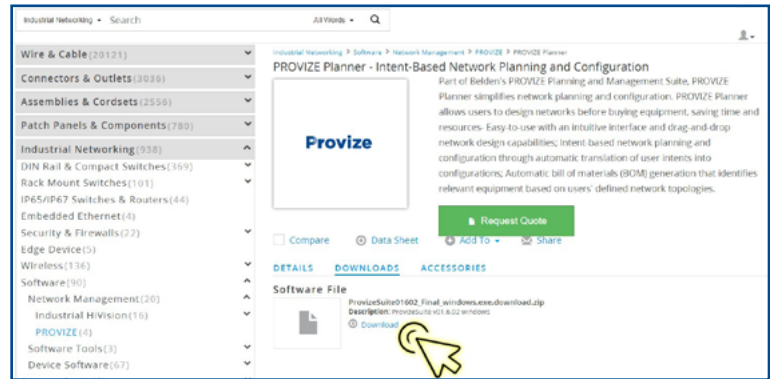
Please have the following materials ready before you begin:

- A PC with an x86-compatible 64-bit CPU with 4 cores
- 16 GB RAM
- A Solid-State Drive (SSD) with at least 500 MB of free space
- Monitor with resolution of 1920x1080 (set to 100% zoom)
- Windows 10 or 11 (64-Bit)
- IPv6 is enabled on the Network Interface Card (NIC) of the PC
- The device you intend to discover is on the same subnet as the PC
- IP address and prefix length of the intended device

First, we will download the Proville Suite Software.

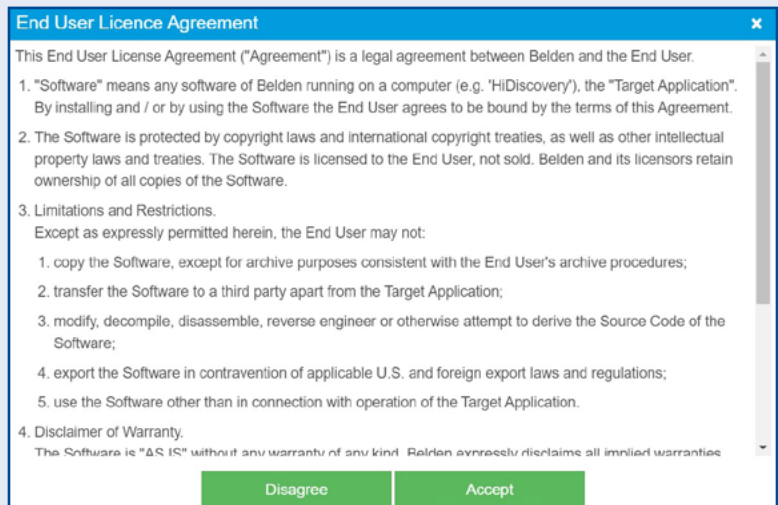
1. The Proville® Explorer is one of your products under the larger Proville® Suite. To connect your device, you will need to download our [Proville® Suite software](#).
2. Open the Proville® Suite catalog page. Click the second tab labeled Downloads. See **Figure 1**.
 - a. Under the first software file **ProvilleSuiteXXXXX_windows.exe download.zip** click the blue **Download** button.
 - b. A pop-up window will appear. Please log in or create an account before downloading the application. To create an account, you will need a valid phone number and email address.
 - c. After a successful login, the webpage redirects you to the **Downloads** tab.

Figure 1



3. Click the Download button and the End User License Agreement (EULA) page will pop up. After you read through the EULA and click the **Accept** button if you agree. See **Figure 2**.

Figure 2



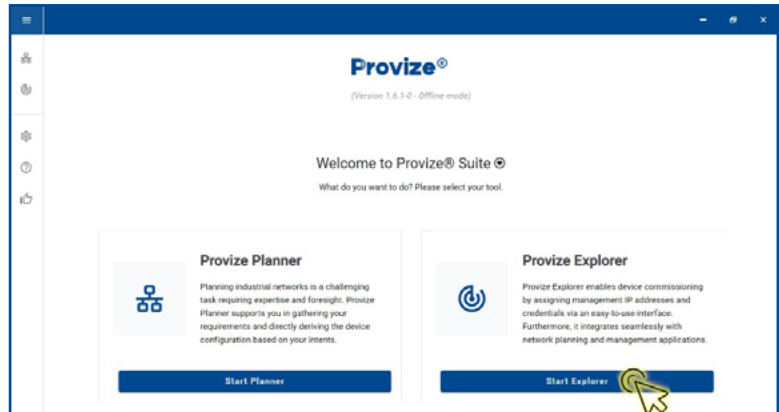
4. The zip file will download and appear in the location specified in the browser settings.
 - a. Extract the files from the zip file to a temporary folder on your computer.
 - b. Navigate to the extracted files.
 - c. Double-click the **ProvilleSuiteXXXXX_Final_windows.exe** file to begin the installation.
 - d. Answer the questions in the installation script and follow its instructions. If you do not answer a question, the script selects the default answer.

Next, we will add the Proville® Explorer to your Proville® Suite account.

1. Double-click the Proville® Suite icon on your desktop to open the Proville® Suite application home page.

2. Navigate to the Proville® Explorer frame and click the **Start Explorer** button. See Figure 3.

Figure 3

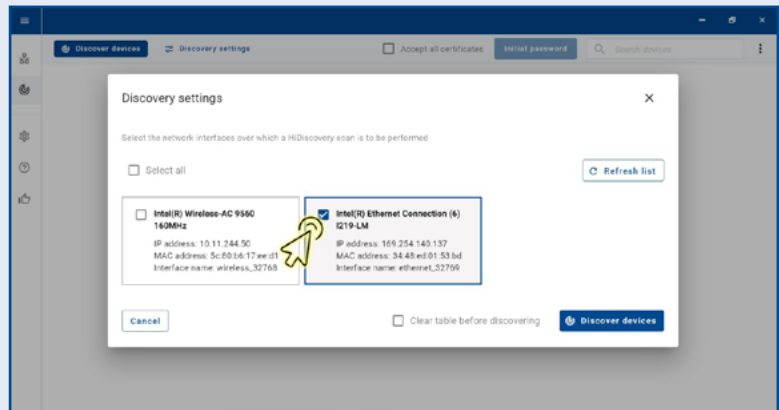


3. In the **Discovery settings** dialog, mark the checkbox for the Network Interface Card (NIC) connected to the network that you want to scan. To select every available network interface card, click the **Select all** button.

See Figure 4.

- a. In the default setting, Proville® Explorer selects every available NIC in the Discovery settings dialog. To change the selection, unmark the checkbox for one or several NICs from the list.

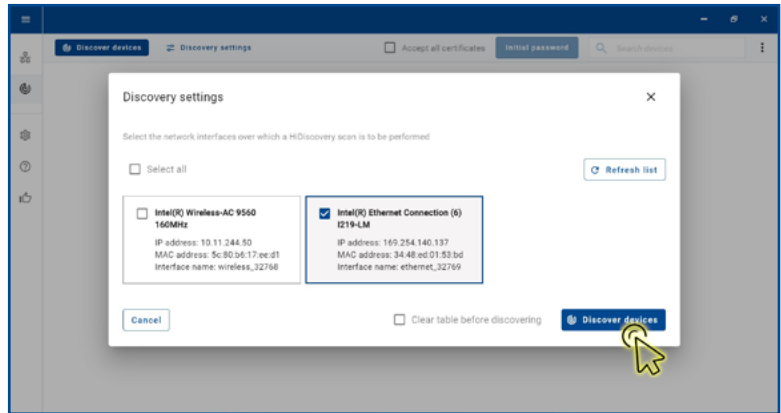
Figure 4



Note: If you disable IPv6 on a NIC, then Proville® Explorer does not discover devices on the NIC.

Figure 5

4. After selecting the applicable networks, click the **Discover devices** button in the bottom right corner. A dialog box will appear with the Discovered devices list. See Figure 5.



Note: To explore Device Discovery further view the comprehensive video.

5. In the **Discovered devices** list, mark the checkbox next to the desired device you would like to discover. Upon your selection, the Device properties frame will open on the right side of your screen.

Figure 6

6. Click the **IP address** drop-down and specify the desired IP address and **Prefix length**. See Figure 6.

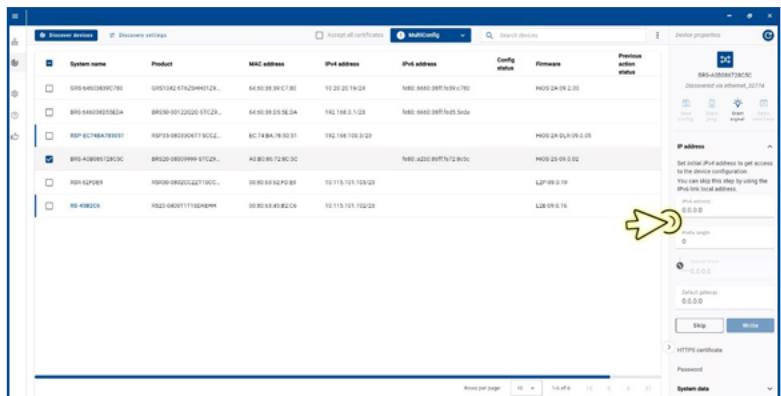


Figure 7

- Click the **Write** button on the bottom right of the **Device properties** frame.
- The display will appear, then choose the fourth icon on the right **Open Interface**. See Figure 7.

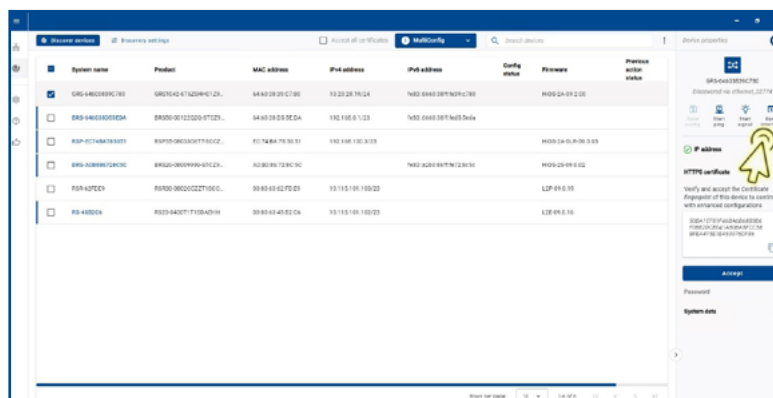


Figure 8

- A new window will open for the Graphical User interface (GUI). Enter your credentials to access the device. See Figure 8.



Note: The default username is “admin” and the password is “private” for the first-time login.

Additional materials

To help you understand ProVize® Explorer better, we recommend exploring a series of additional videos. These videos provide detailed insights into the various functionalities of the tool, offering valuable guidance to enhance your proficiency with ProVize® Explorer.

Below, you will find links to each video:

- [Belden PROVIZE Explorer: Discovered Devices List](#)
- [Belden PROVIZE Explorer: Device Properties Bar](#)
- [Belden PROVIZE Explorer: Accept All Certificates Checkbox](#)
- [Belden PROVIZE Explorer: Clear Devices Table](#)