

DCXT Series Standard Configuration Options

SERIES/FRAME STYLE - DCXT (84H X 36W X 15D)

CBL FLOW - __DIRECTION

- 1 - LEFT TO RIGHT
- 2 - RIGHT TO LEFT

COLOR* -

- 1 - CENTRAL OFFICE WHITE
- 2 - BLACK

TOP PANEL -

- 0 - NONE (KNOCKOUTS REMOVED)
- 1 - BLANK (KNOCKOUTS IN PLACE)
- 4 - BRUSH + (10) TOP CABLE BRACKETS

BOTTOM PANEL -

- 0 - NONE (KNOCKOUTS REMOVED)
- 1 - BLANK (KNOCKOUTS IN PLACE)
- 4 - BRUSH + (8) BOTTOM CABLE ENTRY BRACKETS

DOORS** -

- 0 - NONE
- 1 - BI-FOLD POLYCARBONATE
- 2 - BI-FOLD PERFORATED
- 3 - BI-FOLD SOLID

SIDE PANEL -

- 0 - NONE
- 1 - POLYCARBONATE
- 2 - SOLID

REAR PANEL -

- 0 - NONE
- 1 - SOLID
- 2 - CABLE MANAGEMENT

HOUSING CABLE ATTACHMENT -

- 0 - NONE
- 3 - 10 CABLE DISTRIBUTION BRACKETS

SPOOLS -

- 0 - NONE
- 3 - 10 SPOOLS

*BY DEFAULT TOP, BOTTOM, SIDE, REAR PANELS AND CABLE MANAGEMENT ACCESSORIES ARE POWDER COATED TO MATCH FRAME COLOR

**BY DEFAULT DOORS ARE POWDER COATED BLACK MEDIUM TEXTURE

STANDARD WHITE ENCLOSURES WILL HAVE BLACK DOORS / STANDARD BLACK ENCLOSURES WILL HAVE BLACK DOORS

CONSULT FACTORY FOR SPECIAL COLOR OPTIONS AND/OR ENCLOSURE CONFIGURATIONS

MATRIX ENCLOSURE ORDER EXAMPLE:

DCXT	2	1	-	4	4	1	2	1	-	3	3
SERIES	CBL FLOW	COLOR		TOP PANEL	BOTTOM PANEL	DOORS	SIDE PANEL	REAR PANEL		HSG CBL ATTACHMENT	SPOOLS

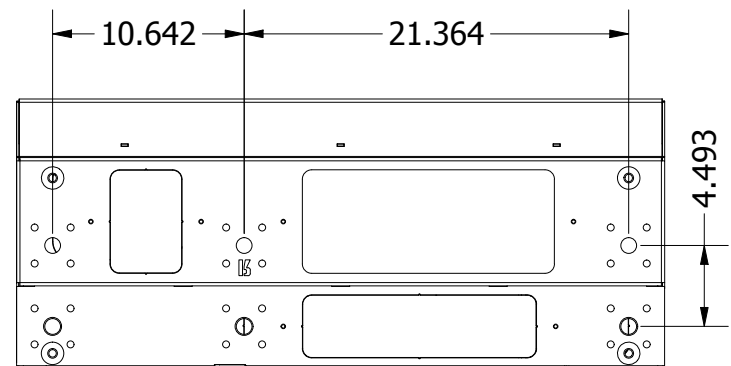
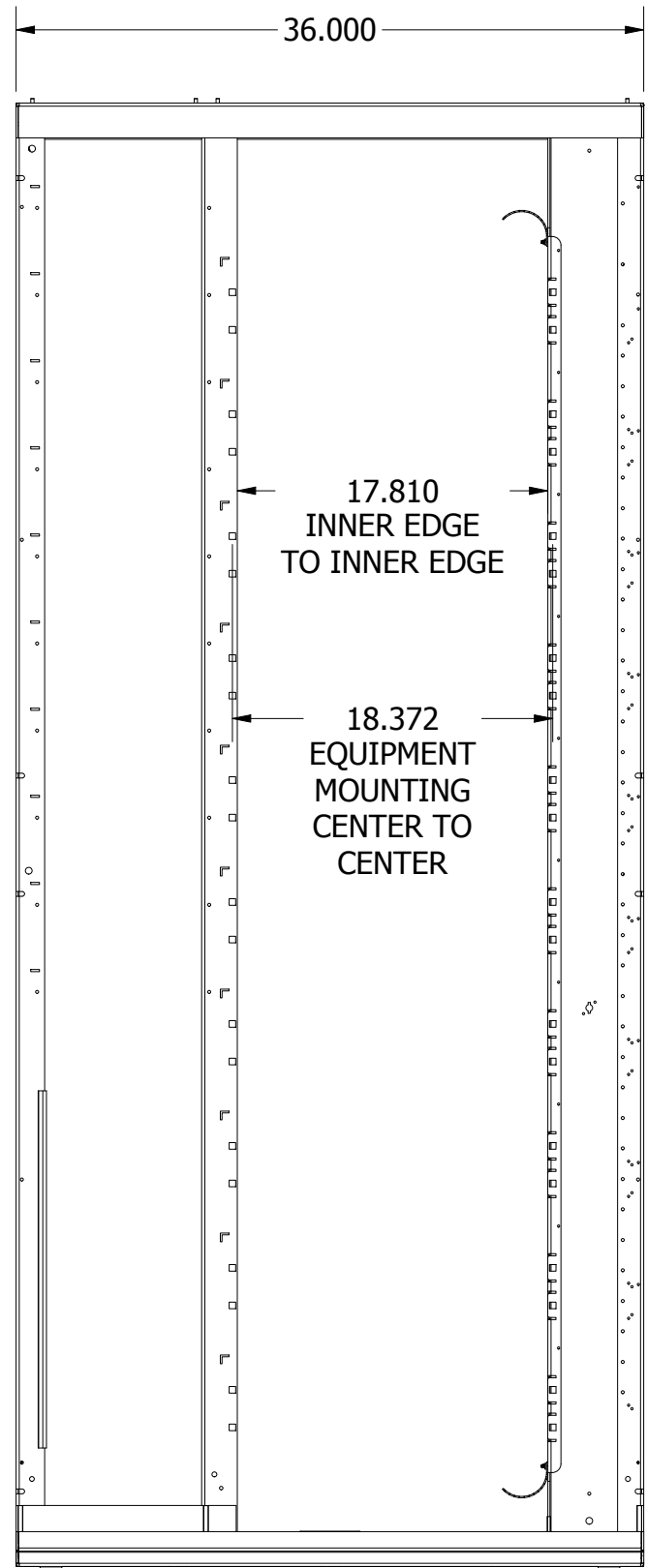
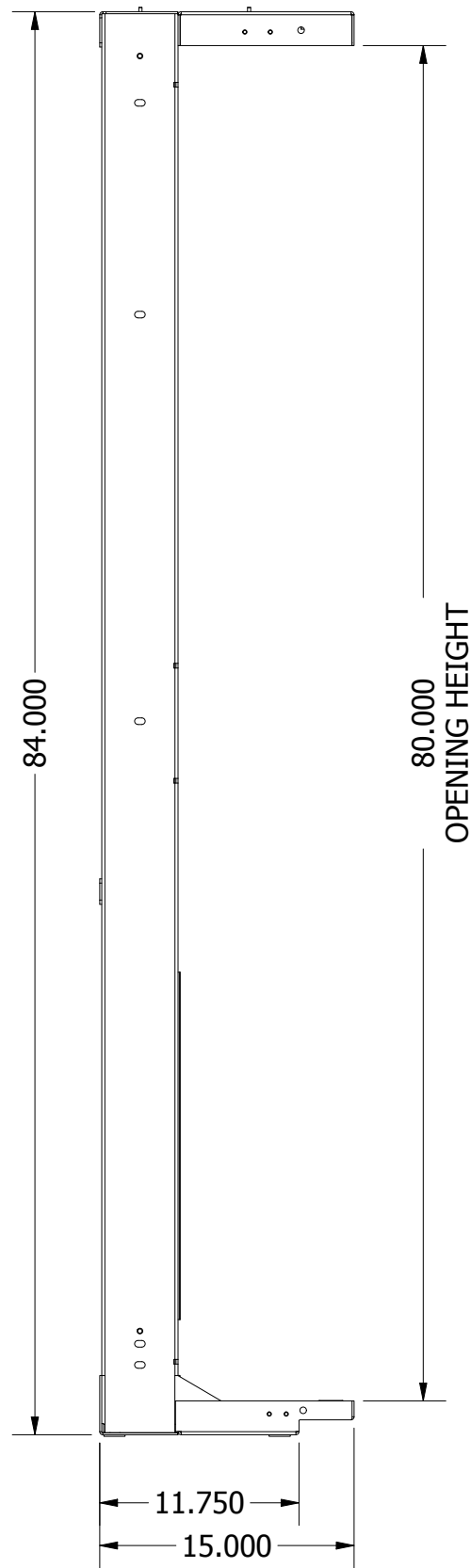
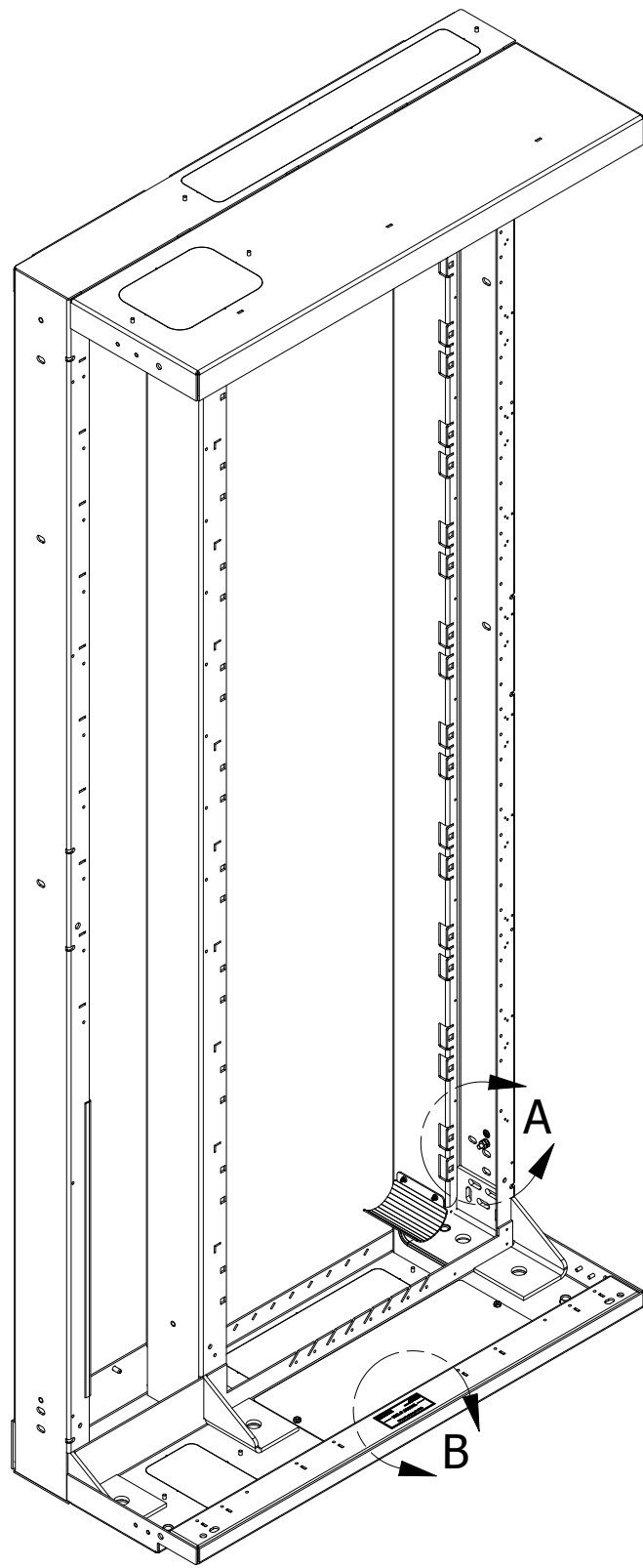
MATRIX DESCRIPTION

84.00"H X 36.00"W X 15.00"D DCXT SERIES ENCLOSURE
RIGHT TO LEFT FLOW
COLOR: CENTRAL OFFICE WHITE
TOP BRUSH + (10) CABLE ENTRY BRACKETS
BOTTOM BRUSH + (8) CABLE ENTRY BRACKETS
BI-FOLD POLYCARBONATE DOOR,
SOLID SIDE PANELS
SOLID REAR PANEL
10 CABLE DISTRIBUTION BRACKETS
10 SPOOLS

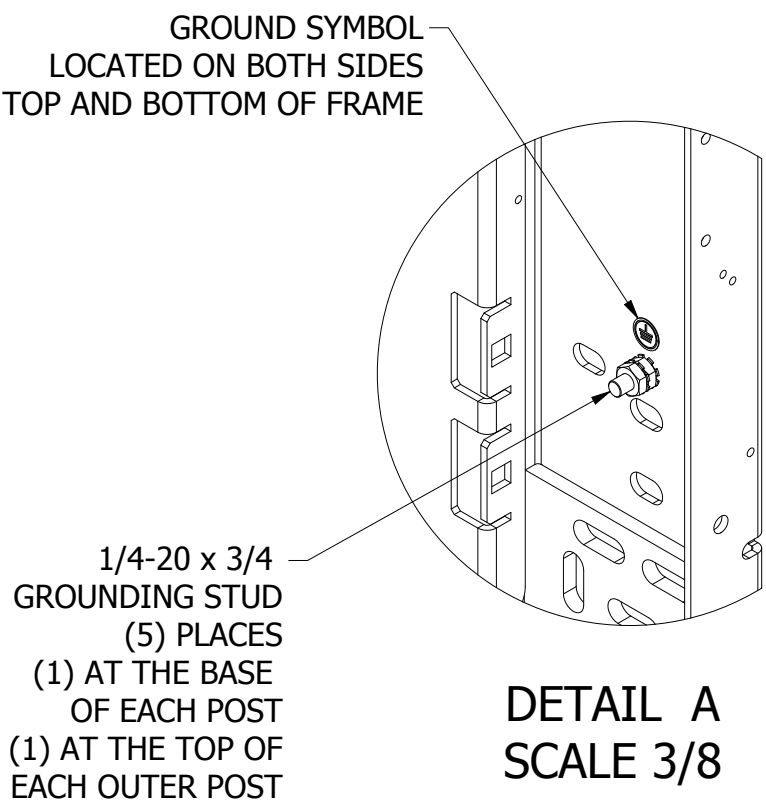
THIS DRAWING AND ALL INFORMATION CONTAINED HEREIN IS THE PROPERTY OF BELDEN. ANY USE, COPY OR REPRODUCTION OF THIS MATERIAL WITHOUT WRITTEN PERMISSION OF BELDEN IS PROHIBITED			
DCXT SERIES MASTER			
DCXT SERIES - MATRIX ORDERING			
DRAWN BY: JCC			
DRAWN DATE: 6/15/2022			
UNITS : INCH	SH 1 of 4	C	SUBMITTAL
SCALE: 3:32	DATE: 6/15/2022		

DCXT FRAME DETAILS

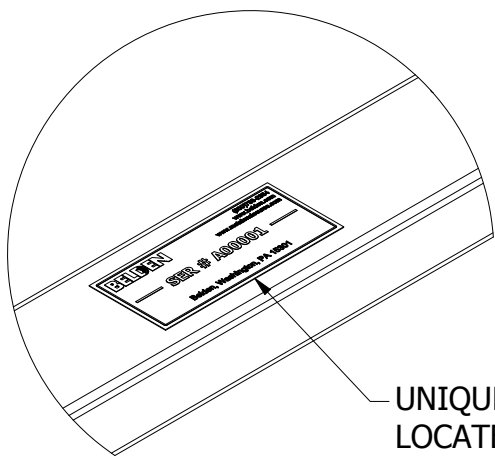
- WELDED 14GA FORMED STEEL CONSTRUCTION
- RIGHT-TO-LEFT OR LEFT-TO-RIGHT CABLE FLOW DIRECTIONS
- ROOM FOR (10) 4U HOUSINGS
- EACH ENCLOSURE IS IDENTIFIED/TRACKED BY A UNIQUE SERIAL NUMBER
- ALL REMOVABLE DOORS ARE GROUNDED TO FRAME BY USE OF BONDING STRAPS AND/OR BONDING HARDWARE
- ALL ENCLOSURES INCLUDE LEVERS (**NOT SHOWN**)



ANCHORING POINTS

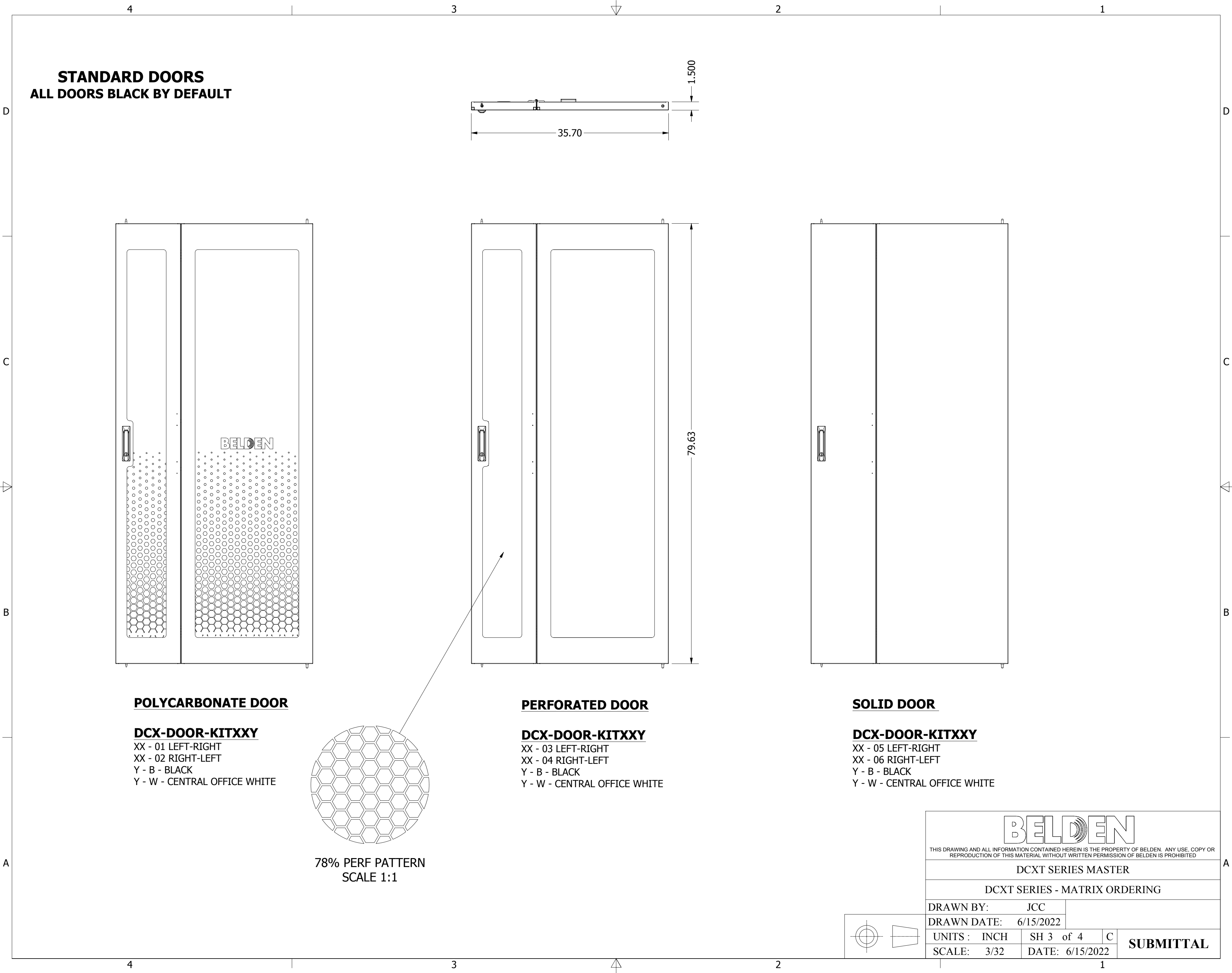


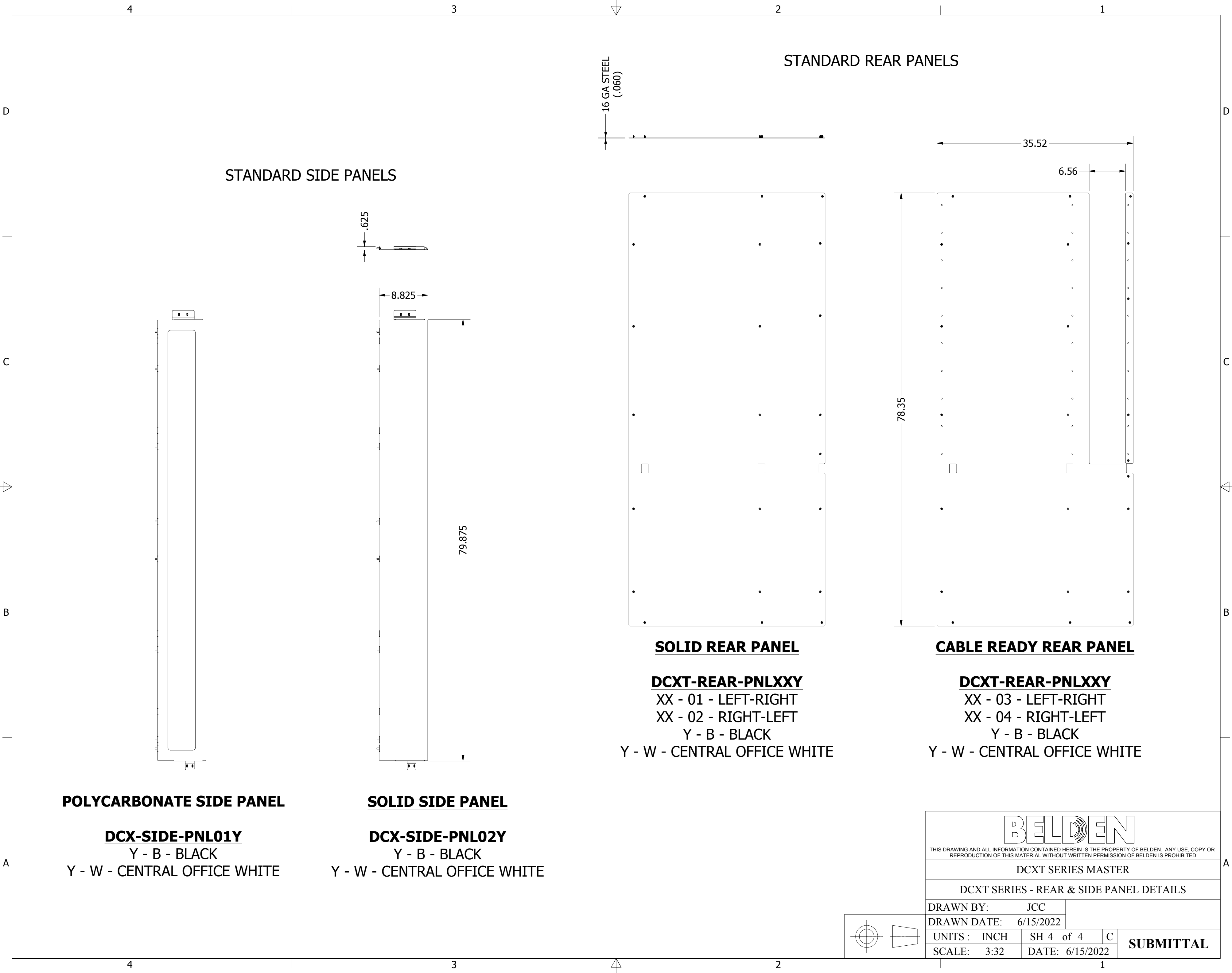
DETAIL A
SCALE 3/8



DETAIL B
SCALE 3/8

BELDEN <small>THIS DRAWING AND ALL INFORMATION CONTAINED HEREIN IS THE PROPERTY OF BELDEN. ANY USE, COPY OR REPRODUCTION OF THIS MATERIAL WITHOUT WRITTEN PERMISSION OF BELDEN IS PROHIBITED</small>			
DCXT SERIES MASTER			
DCXT SERIES - MATRIX ORDERING			
DRAWN BY: JCC			
DRAWN DATE: 6/15/2022			
UNITS: INCH	SH 2 of 4	C	SUBMITTAL
SCALE: 3/32	DATE: 6/15/2022		





POLYCARBONATE SIDE PANEL

DCX-SIDE-PNL01Y
Y - B - BLACK
Y - W - CENTRAL OFFICE WHITE

SOLID SIDE PANEL

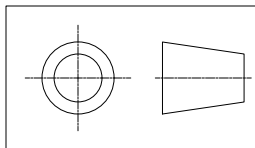
DCX-SIDE-PNL02Y
Y - B - BLACK
Y - W - CENTRAL OFFICE WHITE

SOLID REAR PANEL

DCXT-REAR-PNLXXY
XX - 01 - LEFT-RIGHT
XX - 02 - RIGHT-LEFT
Y - B - BLACK
Y - W - CENTRAL OFFICE WHITE

CABLE READY REAR PANEL

DCXT-REAR-PNLXXY
XX - 03 - LEFT-RIGHT
XX - 04 - RIGHT-LEFT
Y - B - BLACK
Y - W - CENTRAL OFFICE WHITE



BELDEN <small>THIS DRAWING AND ALL INFORMATION CONTAINED HEREIN IS THE PROPERTY OF BELDEN. ANY USE, COPY OR REPRODUCTION OF THIS MATERIAL WITHOUT WRITTEN PERMISSION OF BELDEN IS PROHIBITED</small>			
DCXT SERIES MASTER			
DCXT SERIES - REAR & SIDE PANEL DETAILS			
DRAWN BY: JCC			
DRAWN DATE: 6/15/2022			
UNITS : INCH	SH 4 of 4	C	SUBMITTAL
SCALE: 3:32	DATE: 6/15/2022		