

Hospitality

Solution Brief



\$3.4M¹

is the average cost
of a hospitality
breach

73%²

of travelers want to use
mobile devices to manage
the hotel experience

82%³

of hotels report
staffing shortages

19%⁴

less time spent on
casino operations
with AI

Today's guests expect more than a warm welcome—they want smart, personalized, and tech-enabled experiences that feel effortless and unforgettable.

True hospitality means delivering meaningful, technology-driven interactions that delight guests, empower staff, and build brand trust—setting a new standard for staying competitive.

Belden's complete connection solutions enable hotels to tackle market trends such as these:

>>>

Artificial
intelligence

>>>

Cybersecurity

>>>

Digital
transformation

>>>

Guest
experience

Belden provides the foundation for a robust, reliable network that optimizes power and data delivery over an infinitely scalable infrastructure. This enables hotels to embrace AI, strengthen cybersecurity and accelerate digital transformation to deliver impressive guest experiences—efficiently and profitably.

1. 2023 Hospitality Sector Threat Landscape: Trustwave Threat Intelligence Briefing and Mitigation Strategies

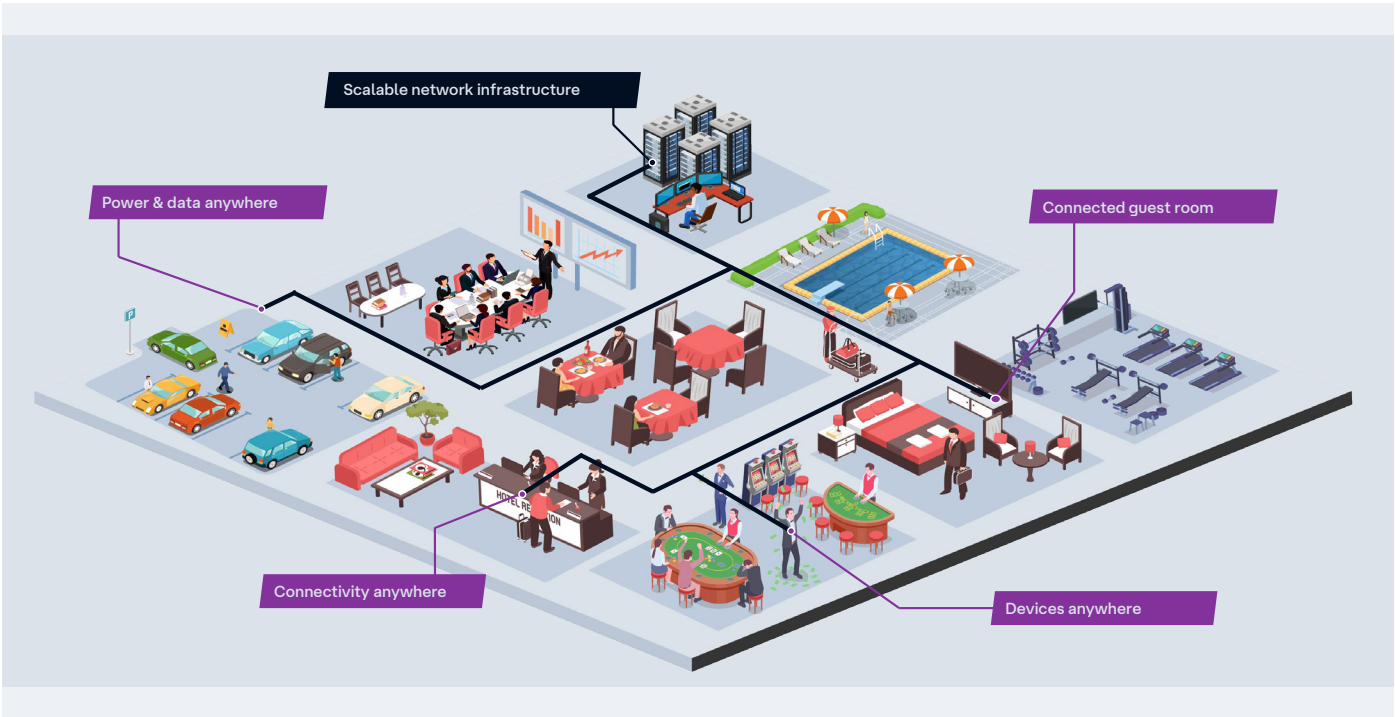
2. Travelers Want High-Tech, Low-Touch Hotel Stays - Oracle Survey

3. AHLA: 82% of Surveyed Hotels Report Staffing Shortages

4. Gaming Analytics: Embracing Artificial Intelligence in Casino Operations - A Comprehensive Report

Belden's scalable network infrastructure: powering seamless hotel connectivity

Create the **foundation** for a fully connected property with Belden's complete connection solutions. From connected guestrooms to centralized system monitoring, our solution enables a **connected guestroom** and the **scalable network infrastructure** to provide **connectivity anywhere**, **power & data anywhere**, and **placing devices anywhere**.



Connected guest room	Connectivity anywhere	Devices anywhere	Power & data anywhere
<p>Uninterrupted connectivity supports a robust network of in-room devices and control platforms.</p> <ul style="list-style-type: none">• FttR (fiber to the guestroom)• POLAN (optical LAN)• Coax to IP-based conversion• Traditional switched networks	<p>High-speed wireless connectivity ensures connections in dense environments.</p> <ul style="list-style-type: none">• Wireless LAN enablement• Remote management capable• SFPs for wireless network equipment	<p>Extended reach solutions bring power and data to every device.</p> <ul style="list-style-type: none">• Hybrid cabling• Single Pair Ethernet• Remote power• Pluggable optics	<p>Rugged connectivity options maintain connections in remote and harsh areas.</p> <ul style="list-style-type: none">• Fault-managed power to the guestroom• Active components for outdoor environments• Enclosures



The connected hotel

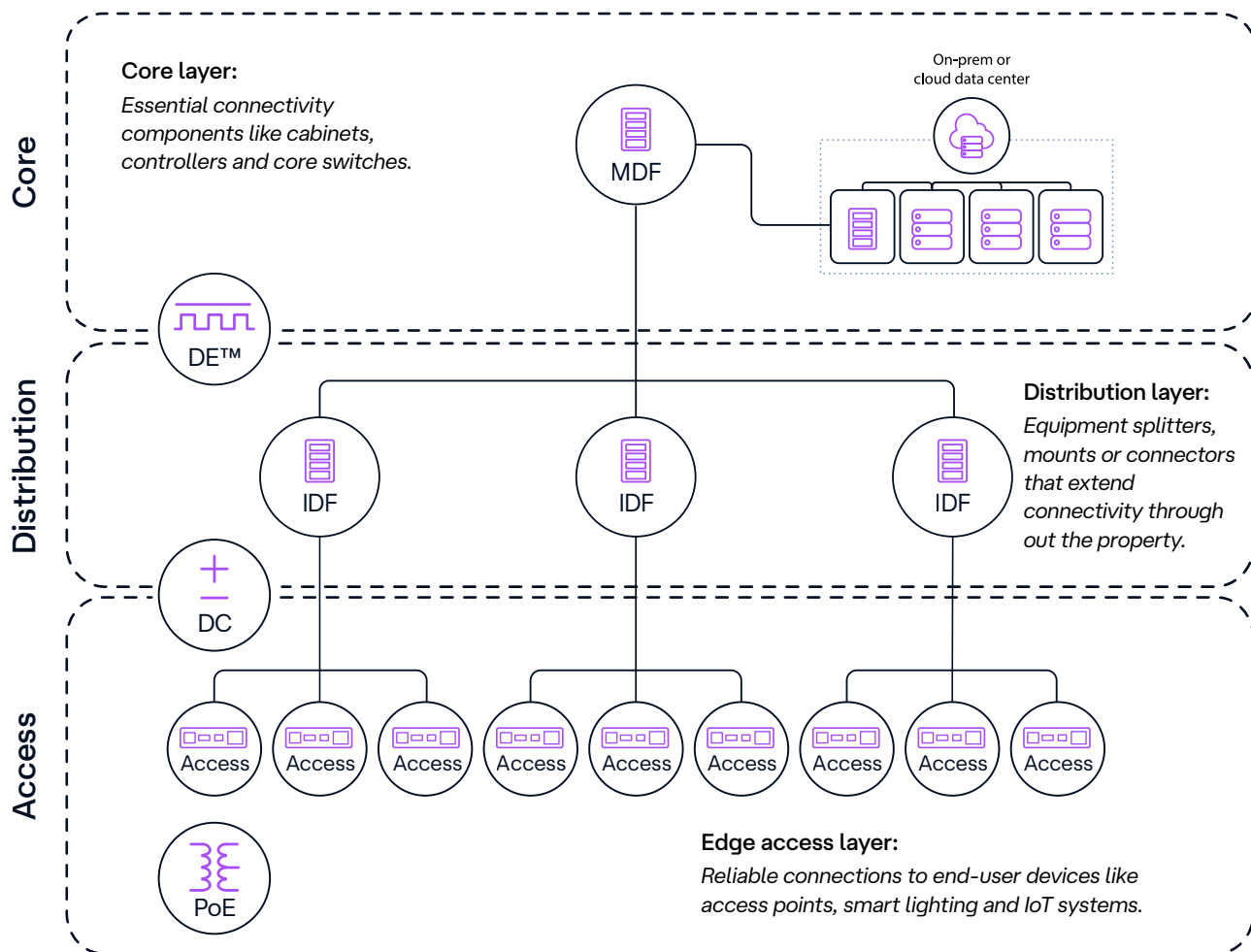
Belden's complete connection solutions ensure that every device, system and service is reliably, securely and seamlessly connected.

We connect:

Front-of-house:	Back-of-house:	Everywhere in between:
High-speed guest Wi-Fi, digital signage, mobile check-in kiosks and smart room controls.	Staff communication systems, building automation, energy management and security.	Smart lighting, surveillance, access control and IoT devices.

Our scalable network infrastructure is organized into three layers

Designed for long-term performance, Belden's complete connection solutions are fully interoperable with any network vendor and built to support multiple technology refresh cycles, reducing the need for frequent upgrades.



Connect to what's possible.



Your dedicated global hospitality team

Belden is more than a solutions provider—we're your trusted advisor when it comes to unlocking new possibilities.

Our global team of industry experts works closely with you to design a network infrastructure that aligns with your unique goals for guest satisfaction and operational efficiency—whether you're upgrading an existing property or building a new one.

We don't believe in one-size-fits-all. We deliver scalable, secure, and future-ready solutions tailored to your needs.

About Belden

Belden Inc. delivers complete connection solutions that unlock untold possibilities for our customers, their customers and the world. We advance ideas and technologies that enable a safer, smarter and more prosperous future. Throughout our 120+ year history we have evolved as a company, but our purpose remains – making connections. By connecting people, information and ideas, we make it possible. We are headquartered in St. Louis and have manufacturing capabilities in North America, Europe, Asia and Africa.

For more information on Belden's
hospitality solutions, visit:

belden.com/hospitality



Follow us on:



© 2025 | Belden and its affiliated companies claim and reserves all rights to its graphic images and text, trade names and trademarks, logos, service names, and similar proprietary marks, and any other intellectual property rights associated with this publication. BELDEN® and other distinctive identifiers of Belden and its affiliated companies as used herein are or may be pending or registered or unregistered trademarks of Belden, or its affiliates, in the United States and/or other jurisdictions throughout the world. Belden's trade names, trademarks, logos, service names, and similar proprietary marks shall not be reprinted or displayed without Belden's or its affiliated companies' permission and/or in any form inconsistent with Belden's business interests. Belden reserves the right to demand the discontinuation of any improper use at any time.