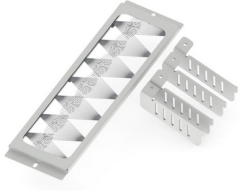


Product: [DCX-BOTE-KIT02W](#)

DCX Cable Attachment Bracket - Bottom, Central Office White



Product Description

DCX Cable Attachment Bracket - Bottom (4 Brackets for 24 Cables), Central Office White

Technical Specifications

Product Overview

Environmental Space:	Indoor
Suitable Applications:	Optical Distribution Frame, Data Centers, Central Equipment Room

Construction

Weight:	0.200 lbs
Height:	1.500 in
Width:	1.060 in
Depth:	4.710 in

Physical Specifications

Max Capacity:	24 Cables
---------------	-----------

Temperature Range

Operating Temp Range:	-10°C to +60°C
Storage Temp Range:	-10°C to +75°C

Product Material

Materials

Description	Material	Color
Cable Entrance Bracket - Bottom	Steel	White

Standards

EU RoHS Compliance Date (yyyy-mm-dd):	2013-01-11
MII Order #39 (China RoHS):	EUP 50

Part Number

Included Parts:	Hardware kit: #10-32 self-tapping screw with external tooth washer, (1) per bracket
Related Parts:	DCX Frame Module & Patch Panel

Variants

Item #
DCX-BOTE-KIT02W

Product Notes

Packaging:	Packaged in a cardboard box (4 per box)
Notes:	For more information, visit our web site at http://www.belden.com/dc

History

Update and Revision:	Revision Number: 0.16 Revision Date: 04-28-2020
----------------------	---

© 2020 Belden, Inc

All Rights Reserved.

Although Belden makes every reasonable effort to ensure their accuracy at the time of this publication, information and specifications described here in are subject to error or omission and to change without notice, and the listing of such information and specifications does not ensure product availability.

Belden provides the information and specifications herein on an "ASIS" basis, with no representations or warranties, whether express, statutory or implied. In no event will Belden be liable for any damages (including consequential, indirect, incidental, special, punitive, or exemplary damages) whatsoever, even if Belden has been advised of the possibility of such damages, whether in an action under contract, negligence or any other theory, arising out of or in connection with the use, or inability to use, the information or specifications described herein.

All sales of Belden products are subject to Belden's standard terms and conditions of sale.

Belden believes this product to be in compliance with all applicable environmental programs as listed in the data sheet. The information provided is correct to the best of Belden's knowledge, information and belief at the date of its publication. This information is designed only as a general guide for the safe handling, storage, and any other operation of the product itself or the one that it becomes a part of. The Product Disclosure is not to be considered a warranty or quality specification. Regulatory information is for guidance purposes only. Product users are responsible for determining the applicability of legislation and regulations based on their individual usage of the product.