

**DCXS Series Standard Configuration Options**

**SERIES/FRAME STYLE** - DCXS (84h x 36w x 15d) SEISMIC

**CBL FLOW** - \_\_DIRECTION

- 1 - LEFT TO RIGHT
- 2 - RIGHT TO LEFT

**COLOR\*** -

- 1 - CENTRAL OFFICE WHITE
- 2 - BLACK

**TOP PANEL** -

- 0 - NONE (ALL KNOCKOUTS REMOVED)
- 1 - BLANK (ALL KNOCKOUTS IN PLACE)
- 2 - BRUSH + (4) TOP CABLE BRACKETS
- 3 - BRUSH + (8) TOP CABLE BRACKETS

**BOTTOM PANEL** -

- 0 - NONE (ALL KNOCKOUTS REMOVED)
- 1 - BLANK (ALL KNOCKOUTS IN PLACE)
- 2 - BRUSH + (4) BOT CABLE BRACKETS
- 3 - BRUSH + (8) BOT CABLE BRACKETS

**DOORS\*\*** -

- 0 - NONE
- 1 - BI-FOLD PLEXIGLASS
- 2 - BI-FOLD PERFORATED
- 3 - BI-FOLD SOLID

**SIDE PANEL** -

- 0 - NONE
- 1 - PLEXIGLASS
- 2 - SOLID

**REAR PANEL** -

- 0 - NONE
- 1 - SOLID
- 2 - CABLE MANAGEMENT

**HOUSING CABLE ATTACHMENT** -

- 0 - NONE
- 1 - 4 CABLE DIST BRACKETS
- 2 - 8 CABLE DIST BRACKETS

**SPOOLS** -

- 0 - NONE
- 1 - 4 SPOOLS
- 2 - 8 SPOOLS

**MATRIX ENCLOSURE ORDER EXAMPLE:**

DCXS	1	1	3	3	1	2	2	2	2
SERIES	CBL FLOW	COLOR	TOP PANEL	BOTTOM PANEL	DOORS	SIDE PANEL	REAR PANEL	HSG CBL ATTACHMENT	SPOOLS

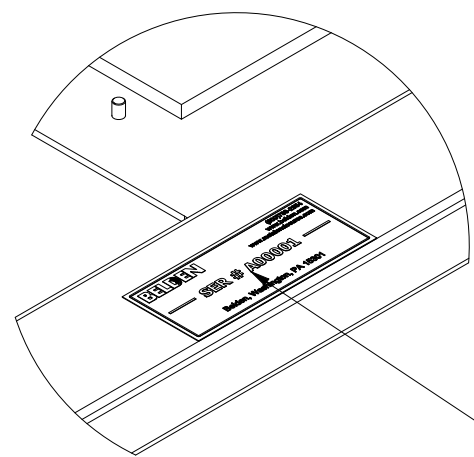
**MATRIX DESCRIPTION**

84.00h x 36w x 15d DCXS SERIES ENCLOSURE  
LEFT TO RIGHT FLOW  
CENTRAL OFFICE WHITE w/  
TOP BRUSH + (8) CABLE BRACKETS,  
BOT BRUSH + (8) CABLE BRACKETS,  
BI-FOLD PLEXIGLASS DOOR,  
SOLID SIDE PANEL  
CABLE MANAGEMENT REAR PANEL  
8 BRACKET (96 CABLE) / 16 LPM BRACKETS  
8 SPOOLS

THIS DRAWING AND ALL INFORMATION CONTAINED HEREIN IS THE PROPERTY OF BELDEN. ANY USE, COPY OR REPRODUCTION OF THIS MATERIAL WITHOUT WRITTEN PERMISSION OF BELDEN IS PROHIBITED			
DCXS SERIES MASTER			
DCXS SERIES - MATRIX ORDERING			
APPROVED BY: RCG			
APPROVAL DATE: 9/13/19			
UNITS: INCH	SH 1 of 4	C	SUBMITTAL
SCALE: 3:32	DATE: 9/13/2019		

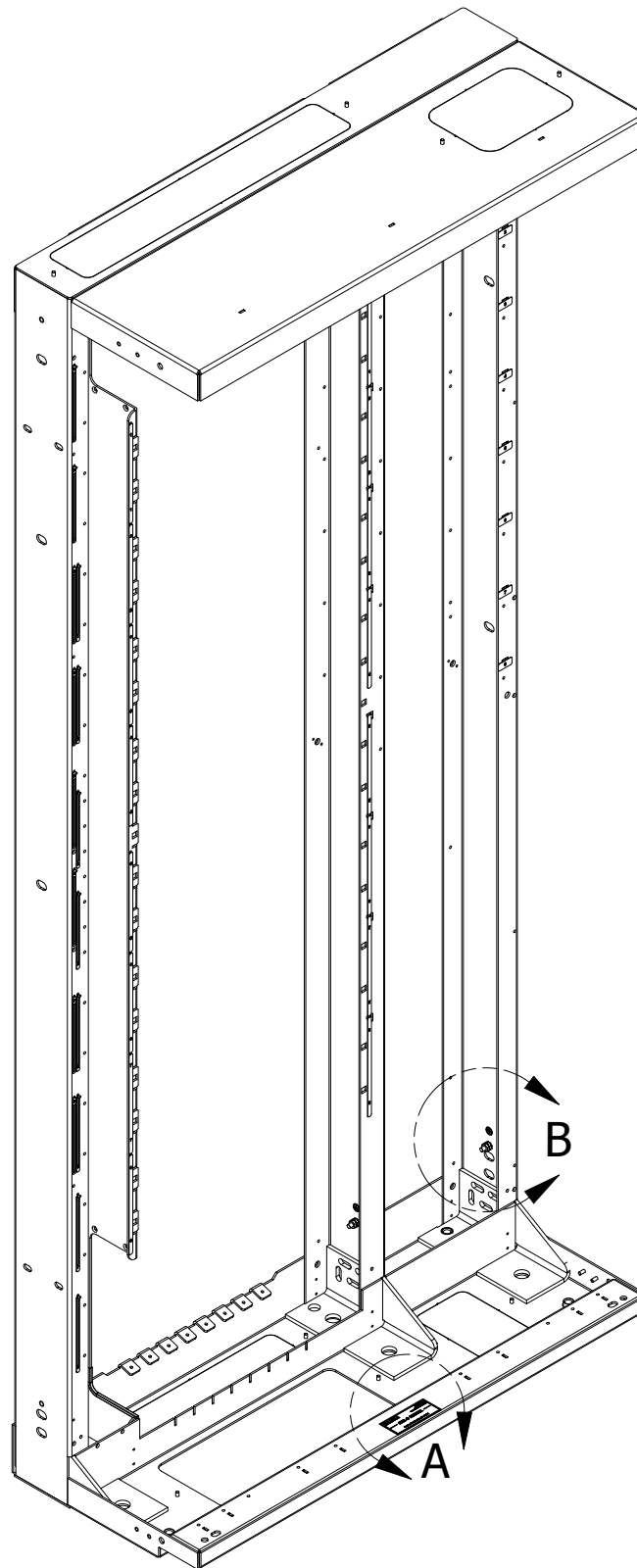
## DCX FRAME DETAILS

- WELDED 14GA FORMED STEEL CONSTRUCTION
- ALL FRAMES SEISMICALLY RATED TO AC156 AND GR63 (CERTIFICATIONS AVAILABLE UPON REQUEST)
- RIGHT-TO-LEFT OR LEFT-TO-RIGHT CABLE FLOW DIRECTIONS
- ROOM FOR (8) 4U HOUSINGS
- EACH ENCLOSURE IS IDENTIFIED/TRACKED BY A UNIQUE SERIAL NUMBER
- ALL REMOVABLE DOORS ARE GROUNDED TO FRAME BY USE OF BONDING STRAPS AND/OR BONDING HARDWARE
- ALL ENCLOSURES INCLUDE LEVERS  
LEVERS MUST BE REMOVED FOR SEISMIC APPLICATIONS

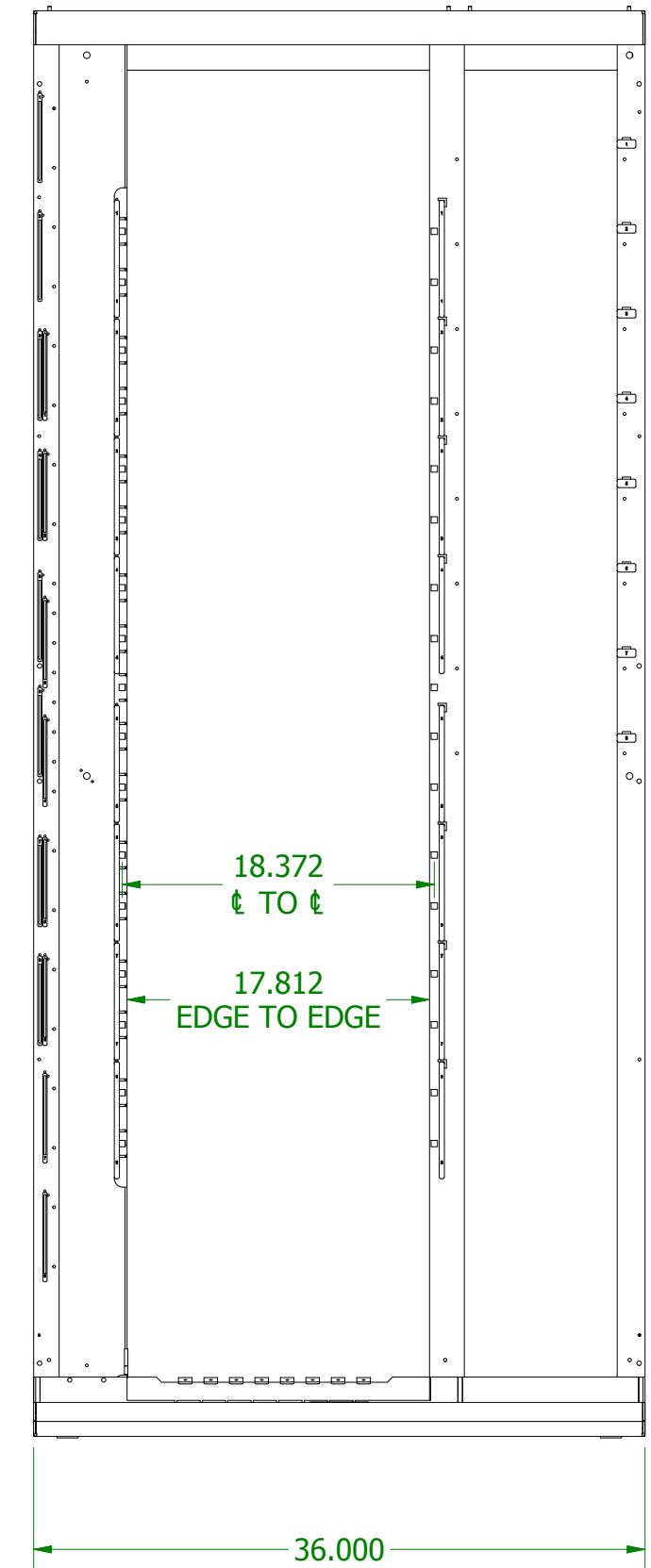
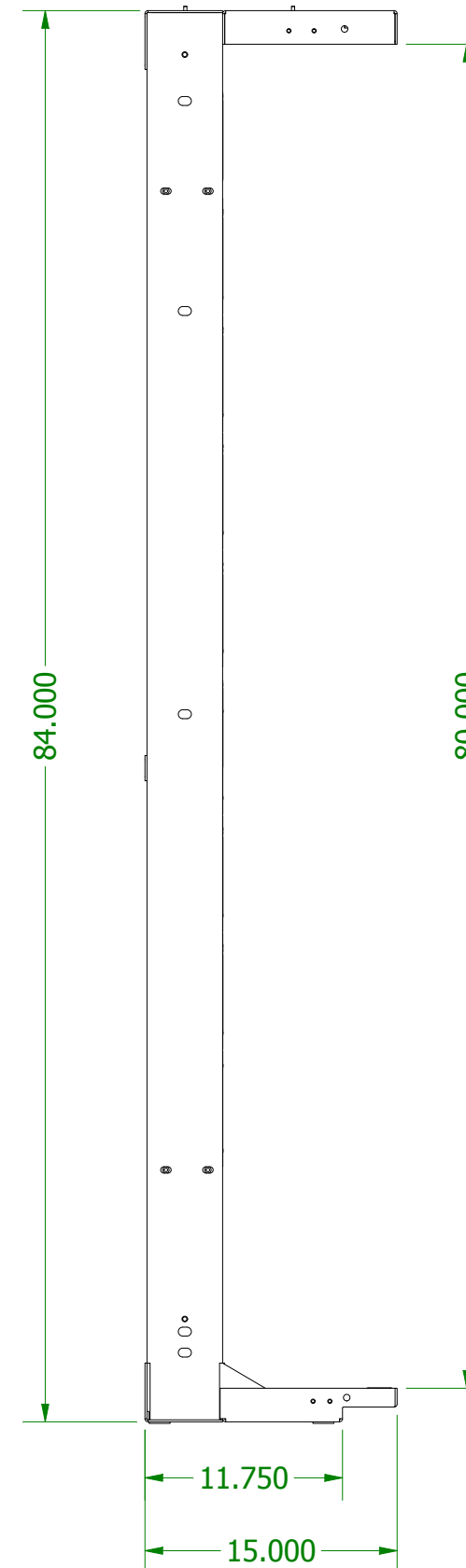


UNIQUE SERIAL NUMBER  
LOCATED ON BOTTOM  
FRONT SILL OF EACH ENCLOSURE

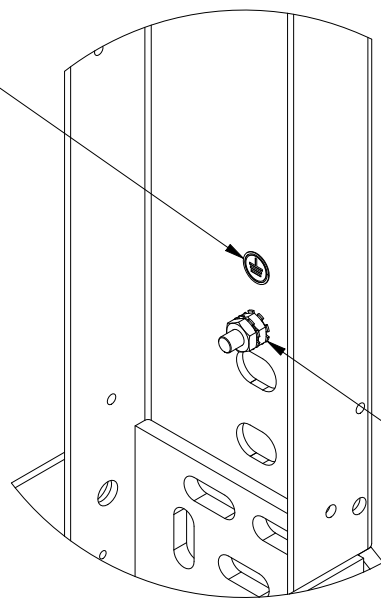
DETAIL A  
SCALE 3/8



LEFT TO RIGHT  
FEED FRAME SHOWN



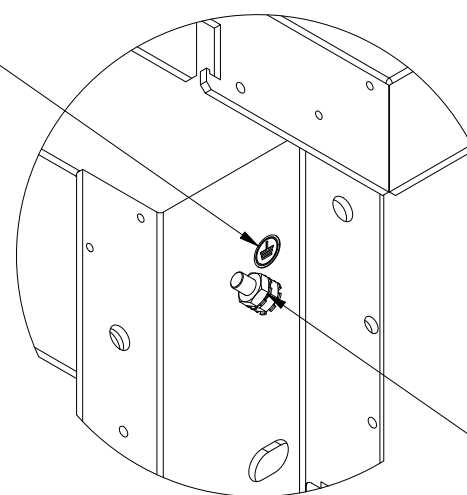
GROUND SYMBOL



1/4-20 x 3/4  
GROUNDING STUD  
(3) PLACES AT THE BASE  
OF EACH POST

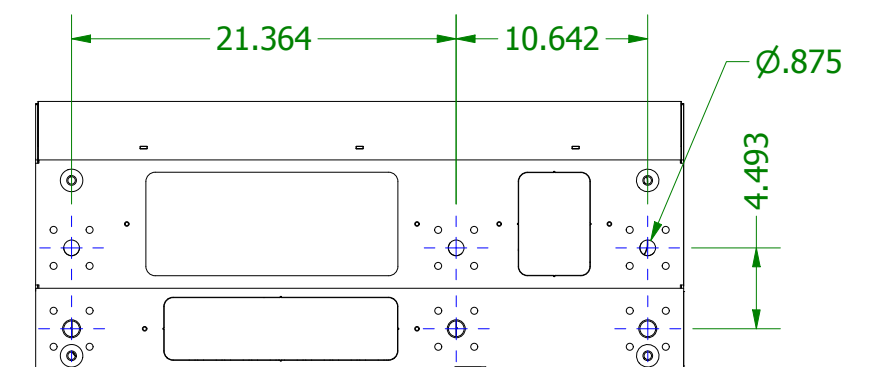
DETAIL B  
SCALE 3/8

GROUND SYMBOL



1/4-20 x 3/4  
GROUNDING STUD  
(2) PLACES AT THE TOP  
OF OUTER BASE POST

DETAIL C  
SCALE 3:8



**BELDEN**

THIS DRAWING AND ALL INFORMATION CONTAINED HEREIN IS THE PROPERTY OF BELDEN. ANY USE, COPY OR REPRODUCTION OF THIS MATERIAL WITHOUT WRITTEN PERMISSION OF BELDEN IS PROHIBITED

DCXS SERIES MASTER

DCXS SERIES - FRAME DETAILS

APPROVED BY: RCG

APPROVAL DATE: 9/13/19

UNITS: INCH

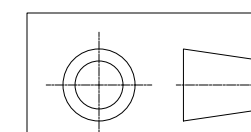
SH 2 of 4

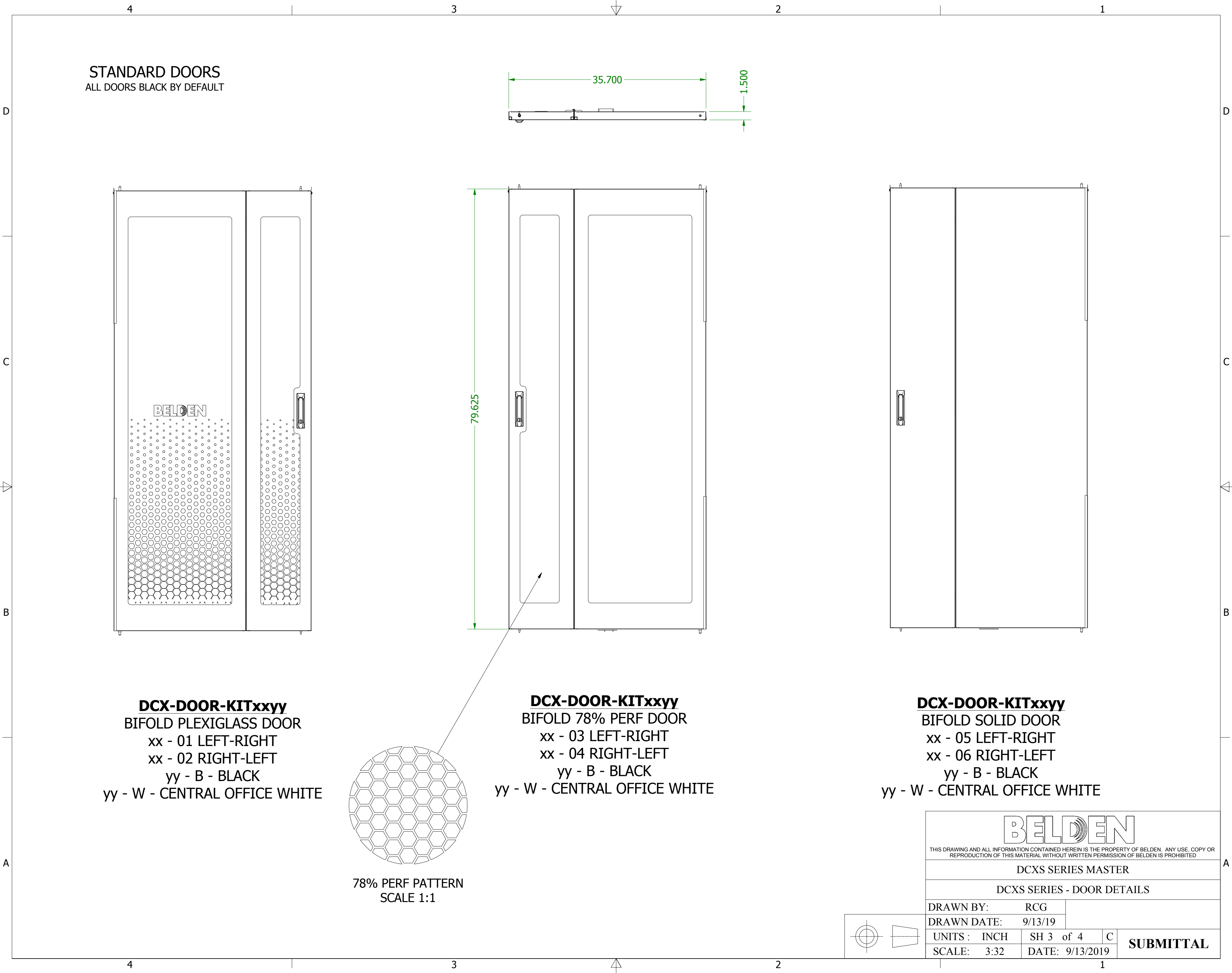
C

SCALE: 3:32

DATE: 9/13/2019

**SUBMITTAL**

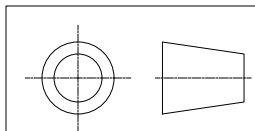




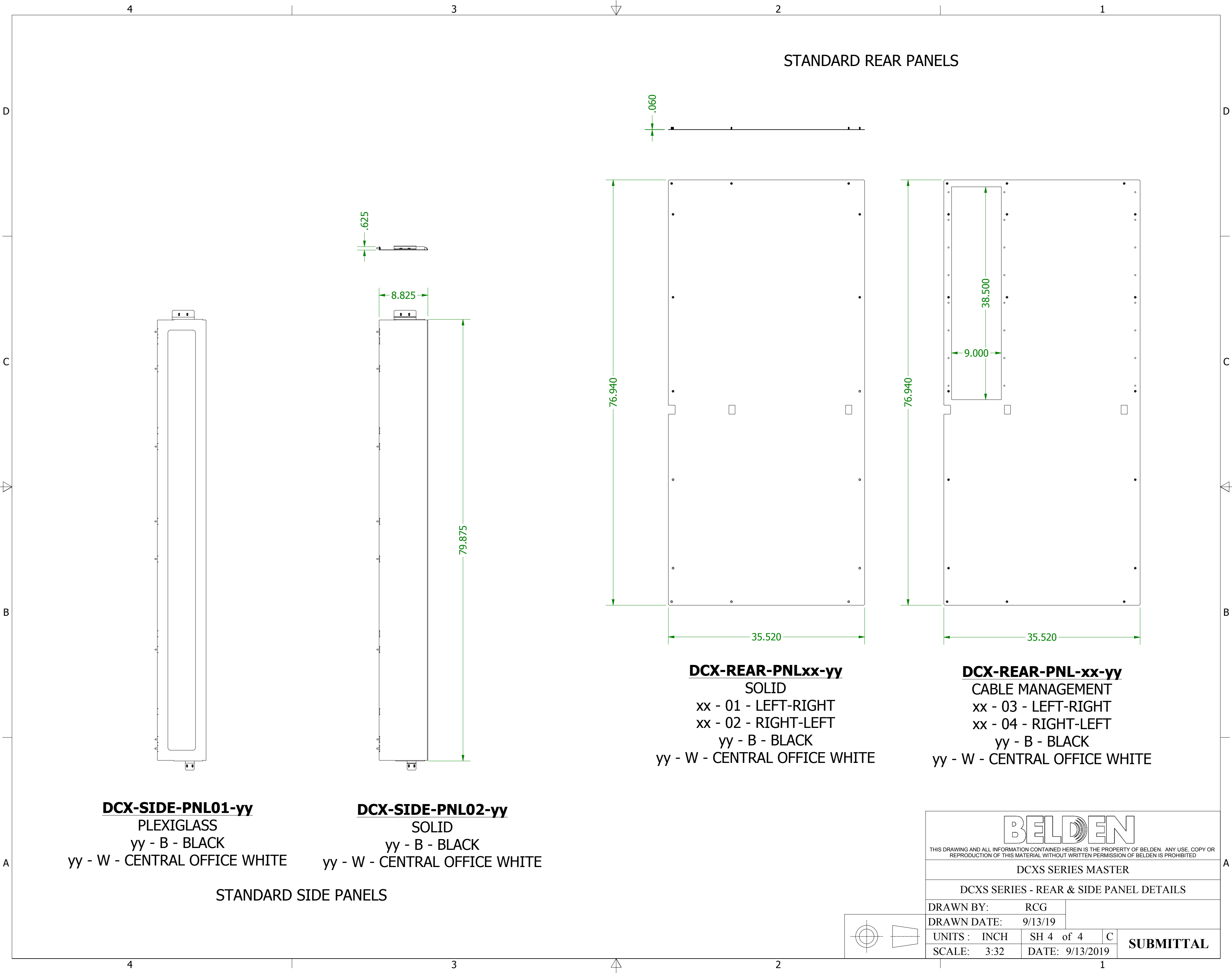
**DCX-DOOR-KITxxyy**  
BIFOLD PLEXIGLASS DOOR  
xx - 01 LEFT-RIGHT  
xx - 02 RIGHT-LEFT  
yy - B - BLACK  
yy - W - CENTRAL OFFICE WHITE

**DCX-DOOR-KITxxyy**  
BIFOLD 78% PERF DOOR  
xx - 03 LEFT-RIGHT  
xx - 04 RIGHT-LEFT  
yy - B - BLACK  
yy - W - CENTRAL OFFICE WHITE

**DCX-DOOR-KITxxyy**  
BIFOLD SOLID DOOR  
xx - 05 LEFT-RIGHT  
xx - 06 RIGHT-LEFT  
yy - B - BLACK  
yy - W - CENTRAL OFFICE WHITE



<div>BELDEN</div> <div>THIS DRAWING AND ALL INFORMATION CONTAINED HEREIN IS THE PROPERTY OF BELDEN. ANY USE, COPY OR REPRODUCTION OF THIS MATERIAL WITHOUT WRITTEN PERMISSION OF BELDEN IS PROHIBITED</div>			
DCXS SERIES MASTER			
DCXS SERIES - DOOR DETAILS			
DRAWN BY:		RCG	
DRAWN DATE:		9/13/19	
UNITS :	INCH	SH 3 of 4	C
SCALE:	3:32	DATE: 9/13/2019	<b>SUBMITTAL</b>



**DCX-SIDE-PNL01-yy**  
PLEXIGLASS  
yy - B - BLACK  
yy - W - CENTRAL OFFICE WHITE

**DCX-SIDE-PNL02-yy**  
SOLID  
yy - B - BLACK  
yy - W - CENTRAL OFFICE WHITE

**DCX-REAR-PNLxx-yy**  
SOLID  
xx - 01 - LEFT-RIGHT  
xx - 02 - RIGHT-LEFT  
yy - B - BLACK  
yy - W - CENTRAL OFFICE WHITE

**DCX-REAR-PNL-xx-yy**  
CABLE MANAGEMENT  
xx - 03 - LEFT-RIGHT  
xx - 04 - RIGHT-LEFT  
yy - B - BLACK  
yy - W - CENTRAL OFFICE WHITE

STANDARD SIDE PANELS

STANDARD REAR PANELS

<div><div>BELDEN</div><div>THIS DRAWING AND ALL INFORMATION CONTAINED HEREIN IS THE PROPERTY OF BELDEN. ANY USE, COPY OR REPRODUCTION OF THIS MATERIAL WITHOUT WRITTEN PERMISSION OF BELDEN IS PROHIBITED</div></div>			
DCXS SERIES MASTER			
DCXS SERIES - REAR & SIDE PANEL DETAILS			
DRAWN BY: RCG			
DRAWN DATE: 9/13/19			
UNITS : INCH	SH 4 of 4	C	SUBMITTAL
SCALE: 3:32	DATE: 9/13/2019		

