

Smarter maintenance. Stronger operations.

Unlock the power of intelligent monitoring to transform your warehouse operations.

Infographic

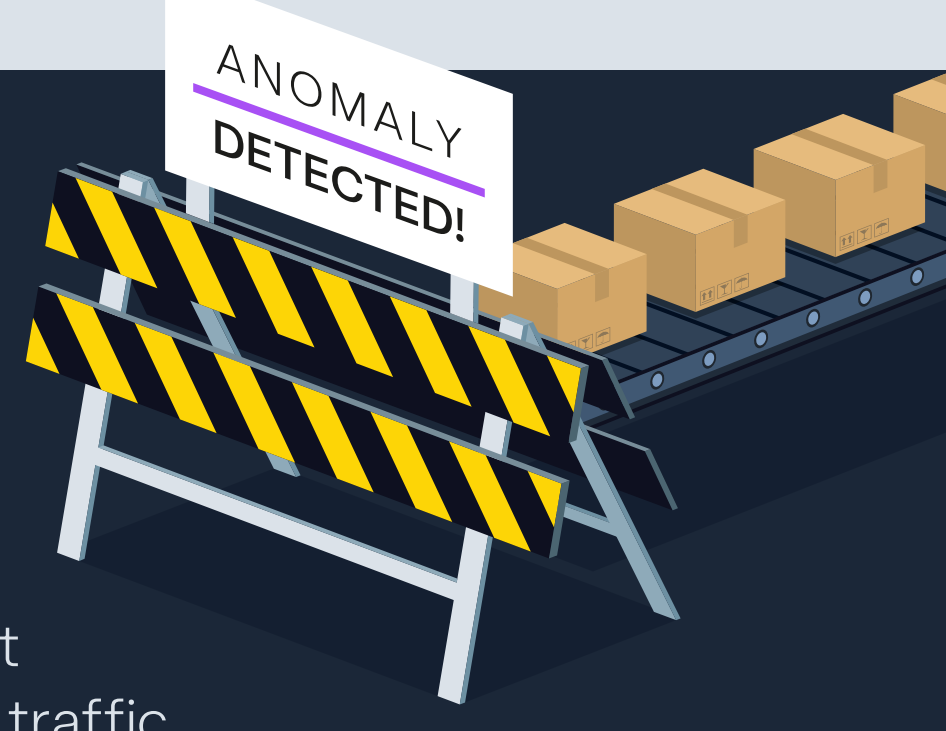
Why intelligent monitoring **matters** for your warehouse

- **Advanced analytics** and **machine learning** can help you spot irregularities in equipment behavior, sensor data and network traffic to **catch problems** before they cause **costly disruptions**.



How intelligent monitoring **powers** proactive maintenance

By identifying early signs of equipment issues, intelligent monitoring enables **proactive maintenance** to reduce costly downtime.



»»» How proactive maintenance **transforms** operations

Preparing your network for proactive maintenance—monitoring for and anticipating issues in advance—avoids costly disruption.

Proactive approaches to maintenance



Condition-based monitoring

(vs.)

Predictive maintenance

- ➔ Real-time monitoring of vibration, temperature, pressure, etc.
- ➔ Maintenance is notified when known conditions exceed predefined thresholds

- ✓ Using machine learning and analytics to predict failure **before** it happens
- ✓ Analyzes equipment trends and patterns to predict issues **before** exceeding thresholds

»»» Key **benefits** of intelligent monitoring for your warehouse

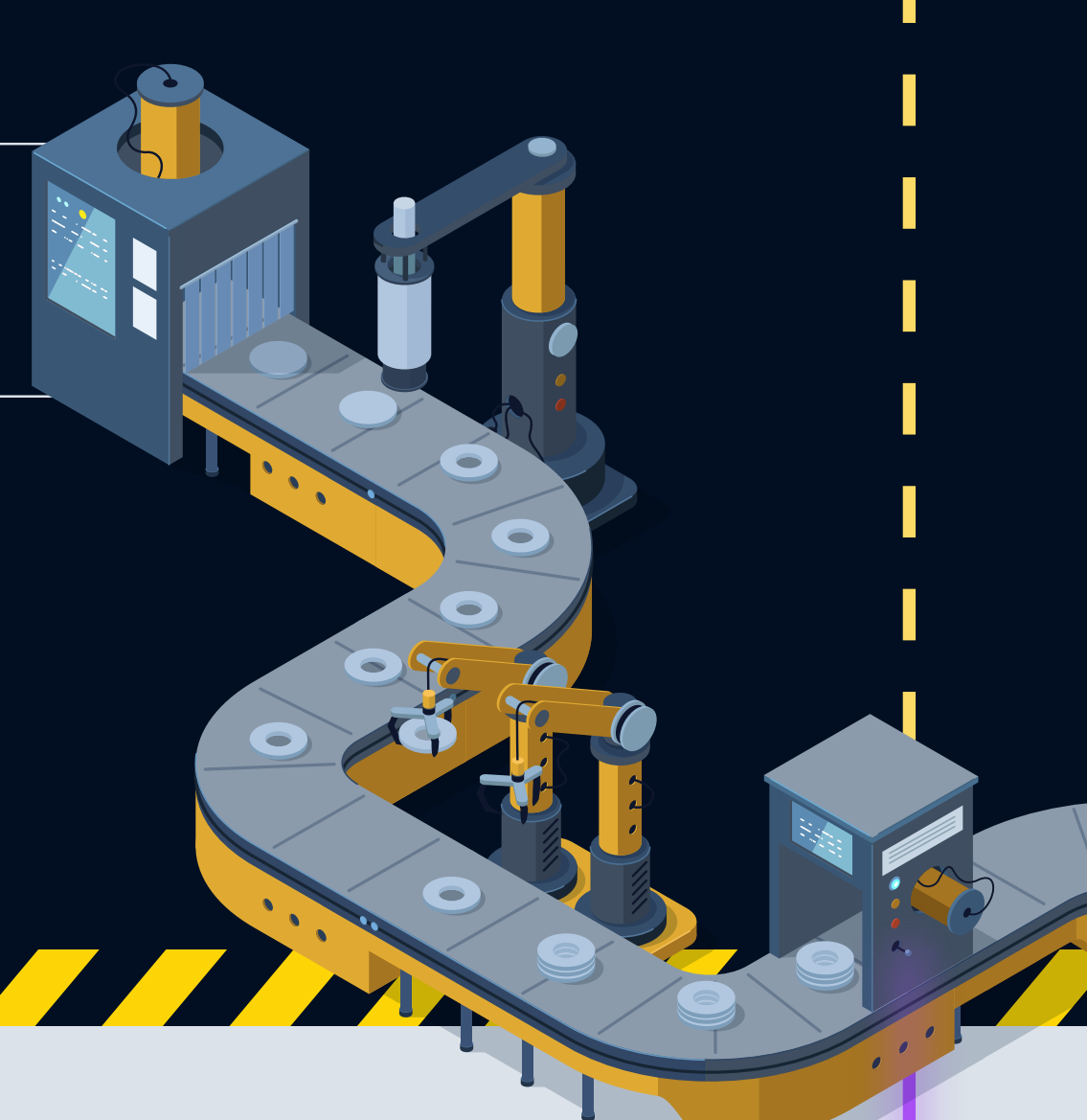
- ✓ **Network Traffic Analysis:** Detect unusual data flows in conveyors and robots that may indicate faults or cyber threats.
- ✓ **Device Behavior Monitoring:** Track equipment metrics to identify hardware and software issues early.
- ✓ **Sensor Data Analysis:** Flag abnormal sensor readings that signal mechanical or safety problems.
- ✓ **Machine Learning Models:** Use historical data to predict failures and schedule maintenance proactively.
- ✓ **Real-Time Alerts:** Receive instant notifications to respond quickly to anomalies and minimize downtime.



»»» How belden **enables** intelligent monitoring & **proactive** maintenance

Complete connection solutions from Belden help your warehouse or distribution center unlock new possibilities.

- ➔ **Capture, move and centralize real-time data** from new and legacy machines
- ➔ **Integrate sensors and hardware to track equipment conditions**
- ➔ **Unify data** so it can be **analyzed and acted upon**



»»» With Belden, you **gain:**

- **Seamless data flow** from equipment to control rooms and cloud platforms
- **Faster, smarter decision-making** through **real-time analytics**
- **Reduced operational costs** by minimizing emergency repairs and spare parts usage
- **Scalable solutions** tailored to your pace and investment level

»»» Belden **empowers your warehouse** to turn downtime into uptime with **complete connection solutions** that make **intelligent monitoring** and **proactive maintenance possible**. Our technology **captures** and **centralizes real-time data** from new and legacy equipment, **integrates sensors** and **hardware** to monitor machine health, and **unifies data** for **actionable insights**—helping you anticipate issues before they disrupt operations.

»»» Ready to connect to what's possible?

Let's talk about how to futureproof your warehouse operations.



Belden

Contact us ➔