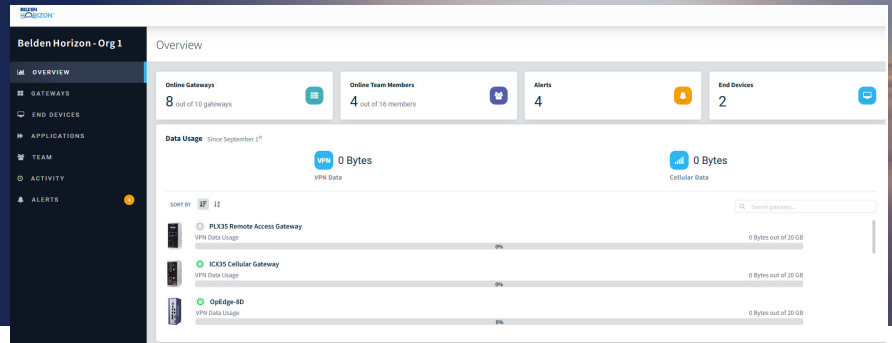


# Belden Horizon™

## IT/OT Management Software

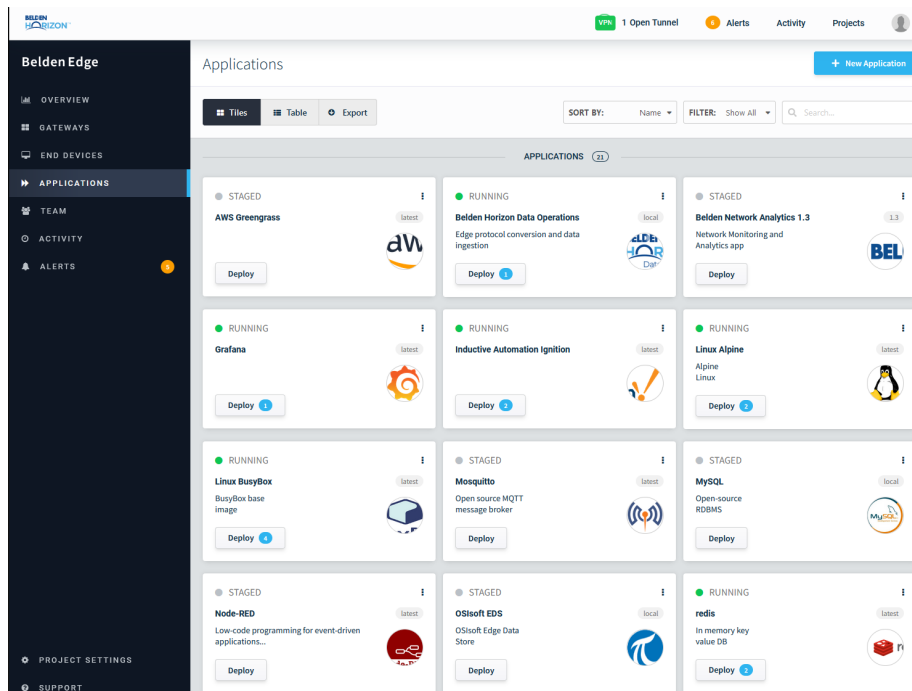
PRODUCT BULLETIN



The Belden Horizon™ platform helps companies securely deploy, connect, and manage OT devices and vendor-agnostic edge applications anywhere in the world.

Belden Horizon™ is a cloud-native platform that provides secure, OT-centric services for deploying, connecting, and managing OT devices and applications.

- **Simplify OT device and application management** using a single, modern, cloud interface
- **Scale industrial edge deployments** with the ability to onboard, monitor, and update connected edge gateway devices and to deploy and orchestrate edge applications
- **Remotely and securely manage connections** with on-demand Secure Remote Access and always-on Persistent Data Network connections.



The platform's Edge Orchestration feature allows for deploying and managing containerized applications on edge devices.

### Key Features

- Secure Remote Access (SRA) establishes a protected, on-demand connection to remote assets
- The Persistent Data Network (PDN) establishes a protected, permanent connection to remote assets
- PDN provides carrier-agnostic connectivity that creates a common, secure network of remote OT assets across different cellular networks
- Edge Orchestration allows for deploying and managing containerized applications on edge devices
- Single Sign-On (SSO) enables IT/OT convergence through user-configurable password policies and token-based multi-factor authentication
- Virtual Lockout-Tagout (vLOTO™) allows authorized plant personnel control on when and how their machines are remotely accessed
- IP Allowlist controls who may access resources and business information

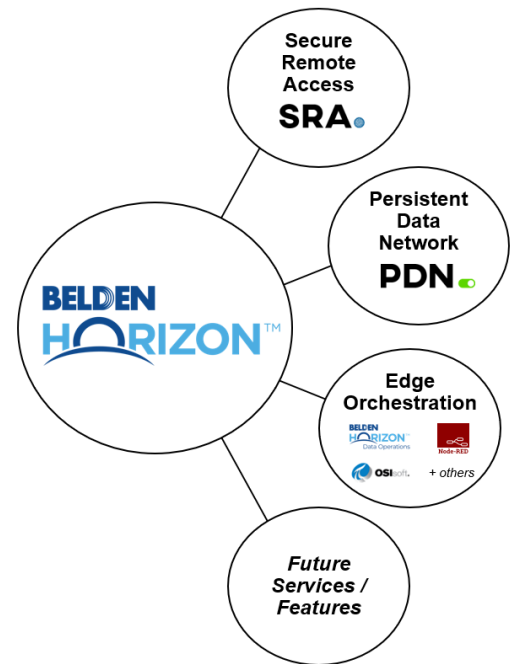
# Your Benefits

The trend in industrialized markets towards digitization is real. Organizations are aware of the tremendous business value that insights gleaned from their operational data can provide, and they are eager to implement data collection, visualization, and analysis solutions that transform operational data into valuable insights. Belden Horizon™ provides critical software for the onboarding, monitoring, and updating of the edge compute devices and the management and orchestration of the edge applications that are used by industrial businesses to improve their efficiency, maximize uptime, and enable continuous process improvement.

Moreover the Belden Horizon™ remote access capability provides users with the peace of mind that the edge-to-cloud link is protected from rising and sophisticated cybersecurity concerns. This secure remote access service is complemented further by a persistent data network capability that allows users to shift their remote connectivity from an “on-demand” to “always-on” state without the need for any local software installation.

## Applications

Application	Features	Customer Benefits
<b>Secure Remote Access (SRA)</b>	<ul style="list-style-type: none"> <li>Virtual Lockout-Tagout (vLOTO)</li> <li>Two-factor authentication</li> <li>IP Allowlist</li> <li>Ability to extend one-time-use credentials</li> </ul>	<ul style="list-style-type: none"> <li>Allows access to remote equipment easily through creation of secure tunnels</li> <li>Provides significant security (e.g. IP Allowlist) and safety (e.g. vLOTO) benefits for remote OT assets</li> <li>Reduces downtime and support costs</li> </ul>
<b>Persistent Data Network (PDN)</b>	<ul style="list-style-type: none"> <li>Managed Layer 2 network with tunnel connections between the connected gateways and tunnel server</li> <li>Includes SRA security functionality</li> </ul>	<ul style="list-style-type: none"> <li>Grants a simple and secure remote communication network to connect geographically dispersed assets</li> <li>Establishes a communication network that is “always-on”</li> </ul>
<b>Edge Orchestration</b>	<ul style="list-style-type: none"> <li>Supports the management of edge applications across one or more devices, including the new Hirschmann OpEdge-8D</li> <li>Enables the onboarding, monitoring, and updating of containers on edge hardware</li> </ul>	<ul style="list-style-type: none"> <li>Empowers users to easily implement, install, and integrate with various industrial applications, regardless of the vendor</li> </ul>



## Markets

Belden Horizon™ is suitable for use in any industrial setting, including manufacturing, energy, transportation, utilities and machine building.

Learn more at  
<https://www.belden.com/belden-horizon>