

# Hirschmann IT MAMMUTHUS Managed Switches

Converged IT/OT networks from a single manufacturer

## PRODUCT BULLETIN



In the dynamic realm of industrial automation, the IT/OT convergence concept is gaining momentum. Traditionally separate, IT and OT networks now overlap in terms of performance and functionality. Hirschmann IT equipment is designed to seamlessly integrate both realms without relying on equipment from traditional IT manufacturers. This ensures optimal performance, security, and scalability for your industrial operations. Stay ahead in the world of industrial automation by embracing the power of IT/OT convergence with Hirschmann IT MAMMUTHUS (MTS) switches from Belden.

- **Seamless Integration:** Equipment from a single manufacturer ensures smooth data flow and reduces compatibility issues during IT/OT integration.
- **Unified Management:** A single application simplifies network administration, enabling faster fault detection and response.
- **Robust Security:** Consistent security policies and rapid response to threats enhance network protection.
- **Scalability:** Effortless network expansion and future-proofing capabilities accommodate changing production needs.
- **Efficient Support:** Access to manufacturer-specific expertise ensures timely assistance, and resources for quicker issue resolution and maintenance.

The Hirschmann IT MTS switches provide the capability to construct unified IT/OT networks by exclusively deploying equipment sourced from a single manufacturer.



## Key Features

### Hardware

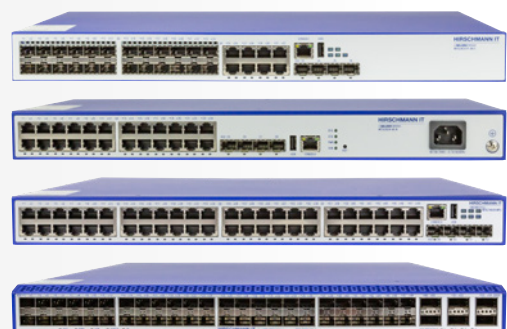
- Extensive product range from access to core switches
- Line speeds at 100Mb/s, 1Gb/s, 10Gb/s, 40Gb/s and 100Gb/s
- Redundant switching engines, power supplies and fans
- Switch Stacking up to 8 devices
- Persistent Power over Ethernet

### Software

- Full IPv6 static, unicast, and multicast routing
- ERPS for rings, subrings, and ladder topologies
- Multi-Chassis Link Aggregation for resilience and load sharing
- Extensive security functions across the complete range
- ERSPAN for traffic mirroring across networks

### Management

- SNMPv3 for secure management
- LLDP for topology discovery
- NETCONF scalable network management
- OAM (802.3ah, 802.1ag, ITU Y.1731) fault/performance monitoring
- OpenFlow communication for SDN



## Your Benefits

Navigating between IT and OT realms can be daunting for both IT and OT staff. IT networks seem complex, while OT networks carry unfamiliar data with stringent delivery requirements. Belden's networking equipment from the Hirschmann and Hirschmann IT brands is designed to seamlessly bridge this gap. Each brand offers functionality that complements the other, ensuring smooth interoperability. Device configuration and supervision methods cater to the preferences of both IT and OT teams, providing familiarity to each group. Smith's solutions streamline the creation and management of converged networks, facilitating efficient operations across domains.

## Applications

Hirschmann IT switches serve as the backbone of seamless connectivity at the intersection of IT and OT networks, providing a versatile array of protocols to seamlessly integrate with existing infrastructures. With redundant physical components, they empower the creation of robust network architectures, ensuring uninterrupted operations even in the face of hardware failures. Their high-speed backbones and abundant Power over Ethernet capabilities make them the go-to solution for CCTV deployments, guaranteeing swift data transfer and efficient power delivery. Furthermore, Ethernet Ring Protection Switching (ERPS) technology enables the establishment of redundant networks across expansive areas, enhancing reliability and fault tolerance.

## Markets

Hirschmann IT switches have been strategically deployed across various sectors where the convergence of IT and OT networks is prevalent. These sectors notably include industrial settings such as factories, critical infrastructures like oil and gas installations, as well as transportation networks spanning metros, airports, and highways.

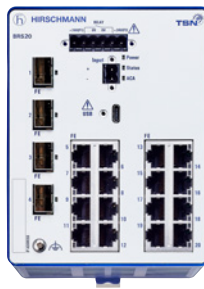


## IT/OT Convergence at Belden

The industrial landscape is witnessing a significant shift with the rising prominence of IT/OT convergence. This convergence, which merges traditional IT and operational technology (OT) networks, is crucial for modern industrial networks. Belden's specialized network equipment plays a key role in facilitating this convergence, seamlessly integrating IT-like features with trusted OT infrastructure. This integration enhances operational efficiency and enables innovative industrial applications. By embracing Belden's comprehensive network solutions, businesses can effectively bridge the IT/OT gap, ensuring optimal performance, security, and scalability in industrial operations, thereby staying ahead in the evolving digital industrial landscape.



ProLinX Edge Mini



Hirschmann BOBCAT BRS



Hirschmann LEMUR LRS



Hirschmann IT MTS



Hirschmann BOBCAT BXP



Hirschmann GREYHOUND GRS

**HIRSCHMANN IT**  
A BELDEN BRAND

© 2024 | Belden and its affiliated companies claim and reserves all rights to its graphic images and text, trade names and trademarks, logos, service names, and similar proprietary marks, and any other intellectual property rights associated with this publication. BELDEN® and other distinctive identifiers of Belden and its affiliated companies as used herein are or may be pending or registered or unregistered trademarks of Belden, or its affiliates, in the United States and/or other jurisdictions throughout the world. Belden's trade names, trademarks, logos, service names, and similar proprietary marks shall not be reprinted or displayed without Belden's or its affiliated companies' permission and/or in any form inconsistent with Belden's business interests. Belden reserves the right to demand the discontinuation of any improper use at any time.