



BELDEN

WireNET®

Commercial Grade for Networking Solutions

TABLE OF CONTENTS

| | |
|--|--------------|
| WireNET® Structured Cabling Solutions | 4-7 |
| Markets | 4 |
| Applications | 5 |
| Solutions | 6-7 |
| WireNET® Copper Solutions | 8-15 |
| Cables - UTP | 9 |
| Cables - Shielded | 10 |
| Patch Cords - UTP/STP | 11 |
| Jacks - UTP/STP | 12 |
| Panel and Faceplate - UTP/STP | 13 |
| EPN | 14-15 |
| WireNET® Fiber Solutions | 16-23 |
| FX@EASE Patch Panel System | 17 |
| FX@EASE Patch Panel - Pigtails - Patch Cords | 18-19 |
| Fiber Types | 20-23 |
| WireNET® Infrastructure Solutions | 24-31 |
| Basic Power Distribution Units | 25 |
| E-Series LAN and Wall Mount Cabinets | 26-29 |
| Cable Management Accessories | 30-31 |



Belden has the end-to-end system connectivity solution to meet your current networking challenges while providing the bandwidth and scalability for the needs of the future.



Markets

We are a leading company serving a multitude of industries with a strong focus on selected markets.

Applications

Industry's Most Extensive Enterprise Connectivity Portfolio.



Local Area Networks

Reliable infrastructure solution to support all LAN applications from building entrance to desktop.

Key Markets

- Hospitality
- Education
- Commercial Buildings
- Home Networking

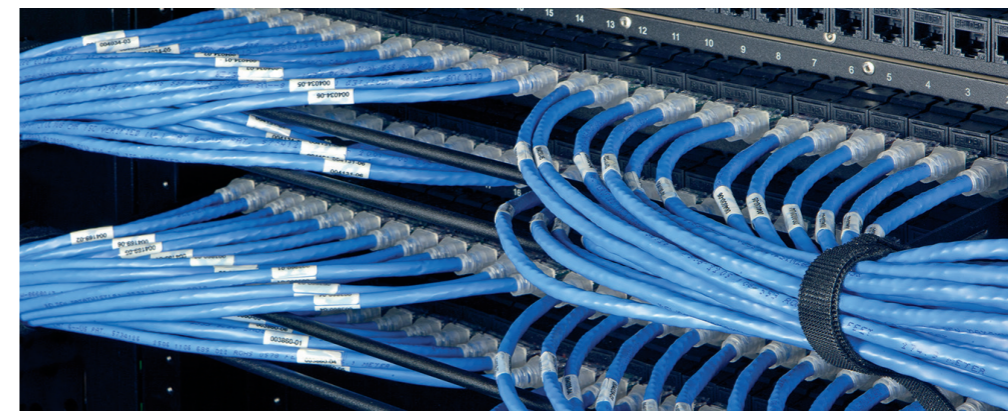
The use of multiple infrastructures within the enterprise, comprised of components from any number of infrastructure vendors and installers, adds undue complexity to the buying and specifying process, as well as to the updating and management of the infrastructure.

Belden tackles problems by taking a universal approach to the enterprise - resolving every signal transmission need with IP- and legacy-based solutions that enable copper connectivity solutions for a diverse set of markets.



Infrastructure Solutions

- LAN Racks and Enclosures
- Basic Rack Power Distribution
- Cable Management Accessories

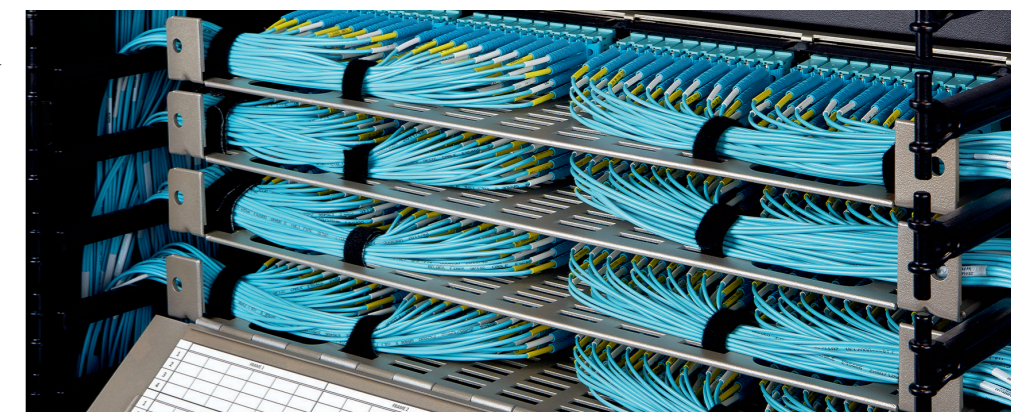


Copper Cable and Connectivity

- Category systems for LAN

Fiber Cable and Connectivity

- Backbone, campus, in-building fiber





Support and Warranties

All Belden Systems are backed by technical support and a commitment to delivering reliable transmission solutions. Belden backs certified systems with two unique best-in-class warranties for complete peace of mind a 20-Year System Warranty.

From the date of installation, the 20-Year Warranty warrants against defects in materials and guarantees to meet all applicable standards.

Belden warrants that each certified System will deliver its specified throughput rate and minimum bandwidth capabilities and be capable of operating the applications that the system was originally designed to support, as well as any new applications, for the warranted lifetime of the installed system.

WireNET® Networking Solutions

| System Standard | Cable Standard | Ethernet Network | | | | Multimedia | Power | Temp. | Noise Immunity | Deployment |
|-----------------|---------------------|------------------|------|----|-----|-------------|-------|-------|----------------|--|
| | | 1G | 2.5G | 5G | 10G | | | | | |
| 1800 500 MHz | Cat7A-S 1000 MHz | 1G | 2.5G | 5G | 10G | HDBaseT 2.0 | 60 W | 60°C | 0,3 | Meet TIA Catagory 6A STP office cabling system |
| 1800 500 MHz | Cat7-S 600 MHz | 1G | 2.5G | 5G | 10G | HDBaseT 2.0 | 60 W | 60°C | 0,3 | Meet TIA Catagory 6A STP office cabling system |
| 2200 500 MHz | Cat6A-S 500 MHz | 1G | 2.5G | 5G | 10G | HDBaseT 2.0 | 60 W | 60°C | 0,3 | Meet TIA Catagory 6A STP office cabling system |
| 2300 500 MHz | Cat6A-U 500 MHz | 1G | 2.5G | 5G | 10G | HDBaseT 2.0 | 60 W | 60°C | 0,3 | Meet TIA Catagory 6A UTP office cabling system |
| 7800 250 MHz | Cat6-S 250 MHz | 1G | 2.5G | 5G | | | 45 W | 60°C | 0,5 | Meet TIA Catagory 6 STP office cabling system |
| 7900 250 MHz | Cat6-U 250 MHz | 1G | 2.5G | 5G | | | 45 W | 60°C | 0,5 | Meet TIA Catagory 6 UTP office cabling system |
| 1600 100 MHz | Cat5E-S 100 MHz | 1G | 2.5G | | | | 30 W | 60°C | 1,0 | Meet TIA Catagory 5E STP office cabling system |
| 1500 100 MHz | Cat5E-U 100 MHz | 1G | 2.5G | | | | 30 W | 60°C | 1,0 | Meet TIA Catagory 5E UTP office cabling system |

| WIRENET® Connectivity Solution | | | | | | | | |
|--------------------------------|-------------|-------------|-------------|-------------|-------------|-------------|-------------|----------|
| Application | LAN | | | | | | | |
| | C5E UTP | C5E F/UTP | C6 UTP | C6 F/UTP | C6A UTP | C6A S/FTP | C7 S/FTP | C7 S/FTP |
| System | 1500-series | 1600-series | 7900-series | 7800-series | 2300-series | 2200-series | 1800-series | |
| TIA/ISO Frequency | 100 MHz | 100 MHz | 250 MHz | 250 MHz | 500 MHz | 500 MHz | 500 MHz | 500 MHz |
| Cable Frequency | 100 MHz | 100 MHz | 250 MHz | 250 MHz | 500 MHz | 500 MHz | 1000 MHz | 1200 MHz |
| Max. Reach | 100 m | | | | | | | |



| WireNET® Copper Solutions | 8-15 |
|------------------------------------|-------|
| Cables - UTP..... | 10 |
| Cables - Shielded..... | 10 |
| Patch Cords - UTP/STP..... | 11 |
| Jacks - UTP/STP..... | 12 |
| Panel and Faceplate - UTP/STP..... | 13 |
| EPN..... | 14-15 |

CAT6A UTP Cables

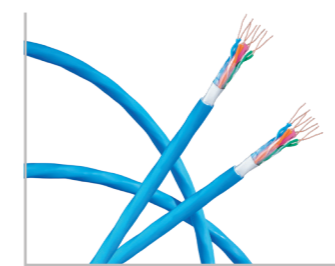
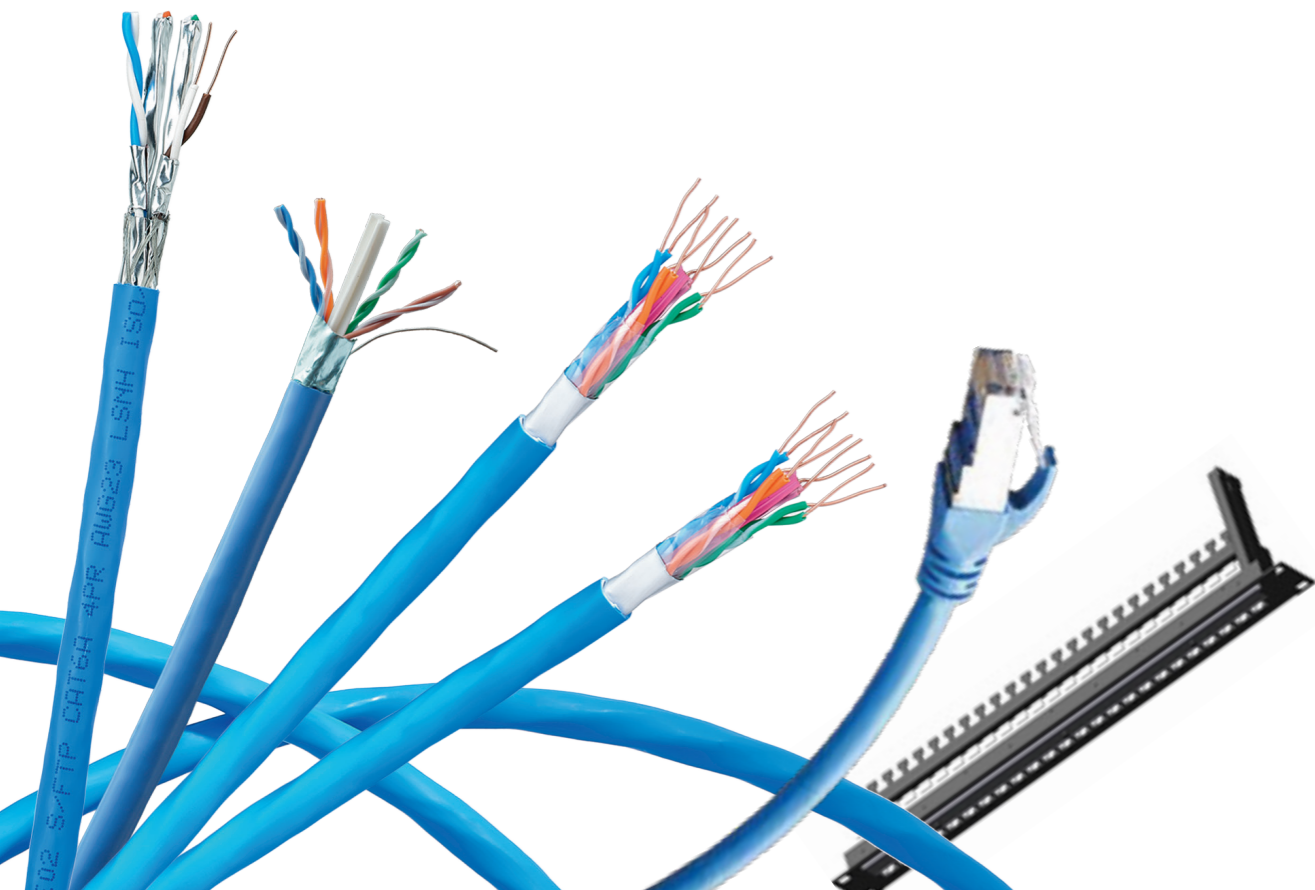
The **2300 series Networking cable** brings a cost-effective Category 6A U/ UTP 500 MHz cabling system to the market that doesn't trade performance, design or ease of installation for affordability. Small 7.2 mm diameter reduces weight and space requirements while easy-to-separate pairs reduce installation time by requiring fewer twists. The cabling system helps building owners take advantage of 10 Gb/s speeds in high-density, highbandwidth applications and devices, including data, voice, surveillance and wireless access points.

CAT6 UTP Cables

The **7900 series Networking cable** consists of 4-pair UTP cables that compliant to Category 6 requirements as per ANSI/TIA/EIA-568-C.2. When used as the horizontal cable in the Belden System, the channel provides at least 250 MHz of bandwidth.

CAT5E UTP Cables

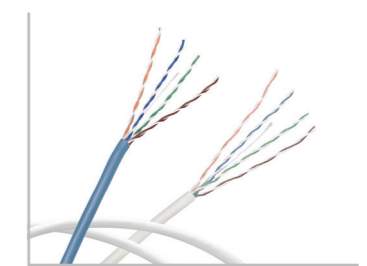
The **1500 series Networking cable** consists of 4-pair UTP cables that exceed the Category 5e requirements as per ANSI/TIA/EIA-568-C.2 Category 5e standard. When used as the horizontal cable in the Belden System, the channel of 100 MHz bandwidth



CAT6A UTP Cables



CAT6 UTP Cables



CAT5E UTP Cables



CAT6A/7/7A Shielded Cables

The 1800 and 2200 series networking cable delivers performance according ANSI/TIA/EIA 568-C.2 Category 6A standard. When used as the horizontal cable within the Belden Shielded System, it provides 500 MHz of proven channel bandwidth and a data rate of 10 Gigabits per second. With a thick, 100% coverage foil shield, your 10 Gb/s of data is protected from harsh EMI environments.

CAT6 Shielded Cables

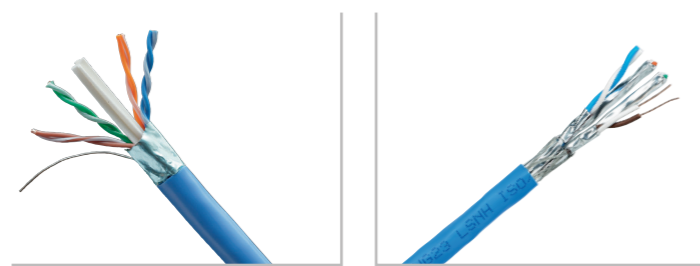
The 7800 series networking cable consists of 4-pair F/UTP cables that comply Category 6 requirements as per ANSI/TIA/EIA-568-C.2. When used as the horizontal cable in the Belden Shielded System, the channel provides at least 250 MHz of bandwidth.

The 7800 series F/UTP shielded cable has a thick, 100% coverage foil shield. This shield protects your system from harsh EMI environments improving your data throughput.

CAT5E Shielded Cables

The 1600 series networking cable consists of 4-pair F/UTP cables that comply Category 5e requirements as per ANSI/TIA/EIA-568-C.2 Category 5e standard. When used as horizontal cable in the Belden Shielded System, the channel provides 100 MHz of bandwidth.

The 1600 series F/UTP shielded cable has a thick, 100% coverage foil shield. This shield protects your system from harsh EMI environments improving your data throughput.



F/UTP Shielded Cable

S/FTP Shielded Cable

Patch Cords UTP/STP: CAT6A, CAT6 and CAT5E

The Belden CAT6A, CAT6 and CAT5E Series WireNET® patch cords offer the best combination of transmission performance and physical integrity.

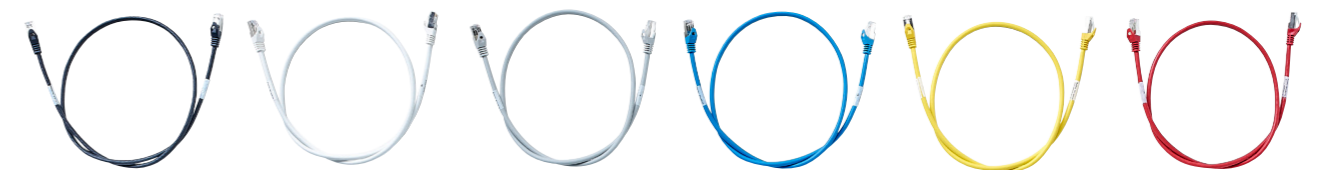
The Belden patch cords are 4-pair 26 AWG UTP modular cords designed to be used within the WireNET® System. Belden has designed the CAT6A Cord based on a patent-pending plug design which allows for very good control of the internal plug NEXT while maintaining the important mechanical characteristics such as flexibility.



- According TIA and ISO transmission and mechanical performance requirements
- Available in C6A, C6 and C5E for end-to-end systems
- C6A Performance characteristics guarantee transmission performance up to 500 MHz
- C6 Performance characteristics guarantee transmission performance up to 250 MHz
- C5E Performance characteristics guarantee transmission performance up to 100 MHz
- WireNET® patch cords are available in colors which match the horizontal cable colors
- 100% factory tested and certified for CAT6A, CAT6 and CAT5E
- Wrap-around label on each cord for easier product identification and length sorting
- Ordering code scheme to customize Patch Cord and Pigtail configurations



With simple planning, easy ordering and rapid delivery, the WireNet® patch cords provides for plug-and-play installation and component reusability, resulting in low installed cost and less waste.





Jacks UTP/STP: CAT6A, CAT6 and CAT5E

The WireNET® all Shielded and the C6A Unshielded Jacks are tool-less, offering the highest flexibility for the installer. With small C6/5E Unshielded Jacks we offer a complete solution of punch down connectivity within the WireNET® System.

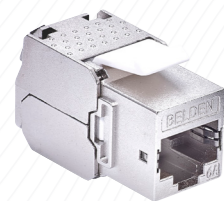
Patch Panels and with Keystone Workstation Outlets

The modular jacks can also be mixed and matched with a wide variety of adapters and boxes to suit practically any installation configuration for workstation outlet, consolidation point and telecommunications closet applications.

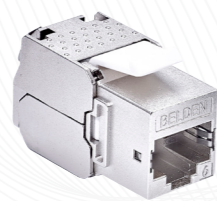
Patch Panel: CAT6A, CAT6 and CAT5E

The WireNET® Patch Panel is a comprehensive robust all-metal, modular patch panels. The modular Patch Panel is available in 1U, 24-port configuration for universal shielded and unshielded applications.

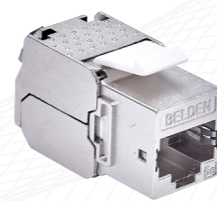
- According TIA and ISO transmission and mechanical performance requirements
- Available in C6A, C6 and C5E for end-to-end systems
- C6A Performance characteristics guarantee transmission performance up to 500 MHz
- C6 Performance characteristics guarantee transmission performance up to 250 MHz
- C5E Performance characteristics guarantee transmission performance up to 100 MHz
- 100% factory tested and certified for CAT6A, CAT6 and CAT5E



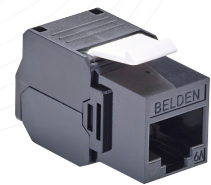
SHIELDED CATEGORY 6A



SHIELDED CATEGORY 6



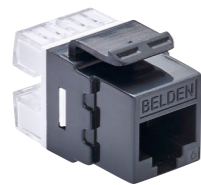
SHIELDED CATEGORY 5E



SHIELDED CATEGORY 6A



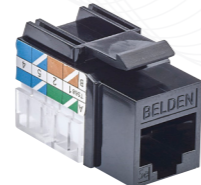
SHIELDED CATEGORY 6



SHIELDED CATEGORY 6



SHIELDED CATEGORY 5E



SHIELDED CATEGORY 5E



SHIELDED CATEGORY 5E

Faceplate

Belden's new faceplate (86x86) range WireNET Workstations offer added benefits of installation flexibility, and uniform aesthetics.



Durability and Reliability

- All Belden faceplates are designed to provide maximum durability, protection and reliable performance.
- They feature a sturdy design for impact resistance, made from the best quality ABS.
- They include a shutter to protect modules from dust and debris and provide optimum performance, density and durability, while inserts and adapters are easily released for further configurations.
- Label windows are situated at the top part of the faceplates, so that the cords do not block the labels.
- This facilitates easy identification, avoiding labels at the bottom where they could not easily be seen after installation.



| Cable | Packaging | C5E UTP | C5E F/UTP | C6 UTP | C6 F/UTP | C6A UTP | C6A S/FTP | C7 S/FTP | C7 S/FTP | |
|--------------------|------------|---------------|---------------|---------------|---------------|-------------------|-----------|---------------|----------|--|
| B2ca | Box/Reel | | | 7965ELV | | | 2202ELV | 1885ELV | 1888ELV | |
| Cca | Box/Reel | | | 7965ELW | | 2302ELW | 2202ELW | 1885ELW | 1888ELW | |
| Dca | Box/Reel | 1583ELY | 1633ELY | 7965ELY | 786ONLY | | 2202ELY | 1885ELY | 1888ELY | |
| Eca/IEC-1 | Box/Reel | 1583ELZ | 1633ELZ | 7965ELZ | 786ONLZ | 2302ELZ | 2202ELZ | 1885ELZ | 1888ELZ | |
| IEC-24/25 | Box/Reel | | | 7965ENC | | | 2202ENC | 1885ENC | 1888ENC | |
| Jack | QTÀ | C5E UTP | C5E STP | C6 UTP | C6 STP | C6A UTP | | C6A STP | | |
| White | 1 EA | CU-JU5EW | | CU-JU6EW | | CU-JUAEW | | | | |
| Black | 1 EA | CU-JU5BK | | CU-JU6BK | | CU-JUABK | | | | |
| Metal | 1 EA | | CU-JS5ME | | CU-JS6ME | | | CU-JSAME | | |
| Patch cord | Length (m) | C5E UTP | C5E STP | C6 UTP | C6 STP | C6A UTP | | C6A STP | | |
| Blue (1 m) | 1 | CU-LPU5BL001M | CU-LPS5BL001M | CU-LPU6BL001M | CU-LPS6BL001M | CU-LPUABL001M | | CU-LPSABL001M | | |
| Grey (1 m) | 1 | CU-LPU5GY001M | CU-LPS5GY001M | CU-LPU6GY001M | CU-LPS6GY001M | CU-LPUAGY001M | | CU-LPSAGY001M | | |
| Blue (2 m) | 2 | CU-LPU5BL002M | CU-LPS5BL002M | CU-LPU6BL002M | CU-LPS6BL002M | CU-LPUABL002M | | CU-LPSABL002M | | |
| Grey (2 m) | 2 | CU-LPU5GY002M | CU-LPS5GY002M | CU-LPU6GY002M | CU-LPS6GY002M | CU-LPUAGY002M | | CU-LPSAGY002M | | |
| Blue (3 m) | 3 | CU-LPU5BL003M | CU-LPS5BL003M | CU-LPU6BL003M | CU-LPS6BL003M | CU-LPUABL003M | | CU-LPSABL003M | | |
| Grey (3 m) | 3 | CU-LPU5GY003M | CU-LPS5GY003M | CU-LPU6GY003M | CU-LPS6GY003M | CU-LPUAGY003M | | CU-LPSAGY003M | | |
| Pigtail 1 m | Length (m) | C5E UTP | C5E STP | C6 UTP | C6 STP | C6A UTP | | C6A STP | | |
| Blue | 1 | CU-LTU5BL001M | CU-LTS5BL001M | CU-LTU6BL001M | CU-LTS6BL001M | CU-LTUABL001M | | CU-LTSABL001M | | |
| Grey | 1 | CU-LTU5GY001M | CU-LTS5GY001M | CU-LTU6GY001M | CU-LTS6GY001M | CU-LTUAGY001M | | CU-LTSAGY001M | | |
| Patch Panel | QTÀ | | | | | UNIVERSAL UTP/STP | | | | |
| 24-port | 1 EA | | | | | NN-UNIV-E | | | | |
| Faceplates | QTÀ | | | | | UNIVERSAL UTP/STP | | | | |
| Single Port | 1 EA | | | | | AX104441C | | | | |
| Double Port | 1 EA | | | | | AX104442C | | | | |
| Tilted Single Port | 1 EA | | | | | AX104447C | | | | |
| Tilted Double Port | 1 EA | | | | | AX104448C | | | | |

| Patch cord example: CU-LPUABL001M | Pigtail example: CU-LTSAGY001M | Colors: |
|-----------------------------------|--------------------------------|-------------|
| CU = Copper | CU = Copper | Black = BK |
| LP = LSZH Patch Cord | LT = LSZH Pigtail | White = EW |
| UA = UTP CAT6A | SA = S/FTP CAT6A | Blue = BL |
| BL = Blue | GY = Grey | Red = RDv |
| 001M = 1 meter | 001M = 1 meter | Yellow = YL |
| | | Grey = GY |

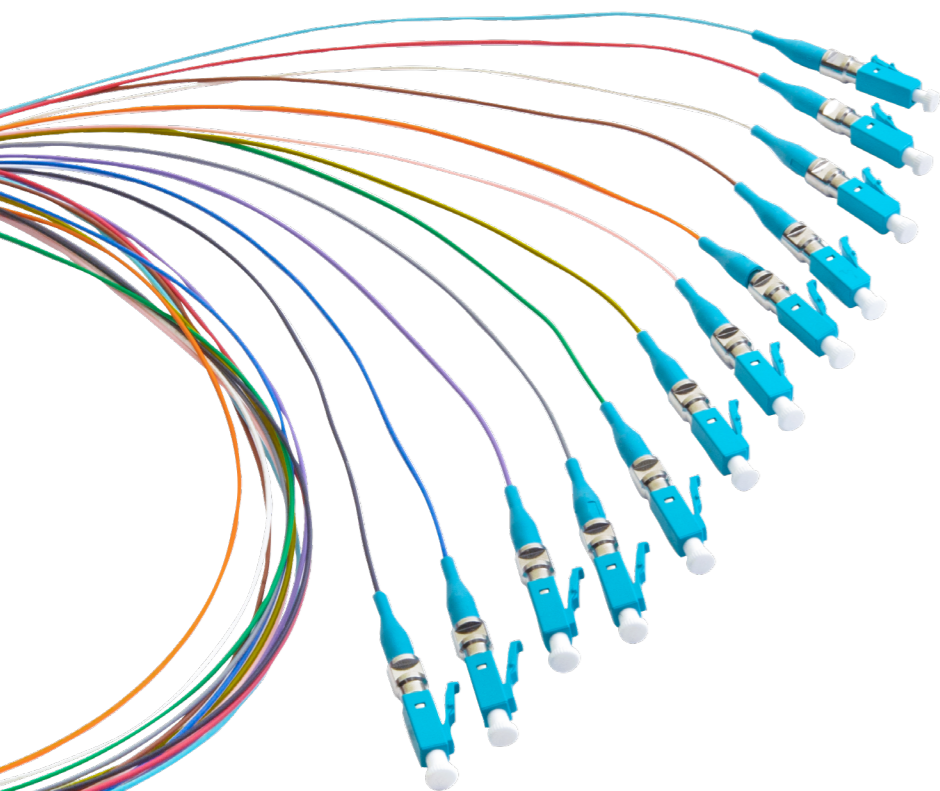
| | |
|----------------------------|----------|
| Belden 110 Tool | AX100749 |
| Outlet Release Tool | AX101185 |
| Field Mount Parallel Plier | CTPFM01 |



| | |
|---|-----------|
| WireNET® Fiber Solutions | 24 |
| FX@EASE Patch Panel System..... | 17 |
| FX@EASE Patch Panel - Pigtails - Patch Cords..... | 18-19 |
| Fiber Types..... | 20-23 |

Belden fiber solutions meet or exceed all applicable TIA/EIA, ISO/IEC and IEEE standards and offer:

- High bandwidth and transmission speed
- Support for Gigabit and multi-Gigabit protocols and networked applications
- Reduced design complexities
- Quick installation
- Increased flexibility





| FX@EASE Patch Panel | | | | | |
|---------------------------------------|----------------------|---------|--------|--------|--------------|
| Fiber Panels | | | | | |
| Panel includes | Splice trays/holders | Port | Type | Color | EPN |
| LC Duplex adapters / 12-blinds loaded | 2 | 12-port | OM3 | Aqua | NN01408.3M12 |
| LC Duplex adapters loaded | 4 | 24-port | OM3 | Aqua | NN01408.3M24 |
| LC Duplex adapters / 12-blinds loaded | 2 | 12-port | OM4 | Violet | NN01408.4M12 |
| LC Duplex adapters loaded | 4 | 24-port | OM4 | Violet | NN01408.4M24 |
| LC Duplex adapters / 12-blinds loaded | 2 | 12-port | SM UPC | Blue | NN01408.SM12 |
| LC Duplex adapters loaded | 4 | 24-port | SM UPC | Blue | NN01408.SM24 |
| LC Duplex adapters / 12-blinds loaded | 2 | 12-port | SM APC | Green | NN01408.AM12 |
| LC Duplex adapters loaded | 4 | 24-port | SM APC | Green | NN01408.AM24 |
| SC Duplex adapters / 12-blinds loaded | 2 | 12-port | OM3 | Aqua | NN01405.3M12 |
| SC Duplex adapters loaded | 4 | 24-port | OM3 | Aqua | NN01405.3M24 |
| SC Duplex adapters / 12-blinds loaded | 2 | 12-port | OM4 | Violet | NN01405.4M12 |
| SC Duplex adapters loaded | 4 | 24-port | OM4 | Violet | NN01405.4M24 |
| SC Duplex adapters / 12-blinds loaded | 2 | 12-port | SM UPC | Blue | NN01405.SM12 |
| SC Duplex adapters loaded | 4 | 24-port | SM UPC | Blue | NN01405.SM24 |
| SC Duplex adapters / 12-blinds loaded | 2 | 12-port | SM APC | Green | NN01405.AM12 |
| SC Duplex adapters loaded | 4 | 24-port | SM APC | Green | NN01405.AM24 |
| ST Duplex adapters loaded | 4 | 48-port | MM | | NN01406.MM48 |
| ST Duplex adapters loaded | 4 | 48-port | SM | | NN01406.SM48 |
| FC Duplex adapters loaded | 4 | 48-port | MM | | NN01407.MM48 |
| FC Duplex adapters loaded | 4 | 48-port | SM | | NN01407.SM48 |

Each panel includes cable managers, 2x 2-grommet angled cable entry brackets

| Upgrade components for half loaded panels | | | | | |
|---|---------|--------|--------|-----------|--|
| Panel includes | Pack | Type | Color | EPN | |
| LC Duplex adapters including 25 screws for NN01408-series patch panel | 12-pack | OM3 | Aqua | NN-8.3M12 | |
| LC Duplex adapters including 25 screws for NN01408-series patch panel | 12-pack | OM4 | Violet | NN-8.4M12 | |
| LC Duplex adapters including 25 screws for NN01408-series patch panel | 12-pack | SM UPC | Blue | NN-8.SM12 | |
| LC Duplex adapters including 25 screws for NN01408-series patch panel | 12-pack | SM APC | Green | NN-8.AM12 | |
| SC Duplex adapters including 25 screws for NN01405-series patch panel | 12-pack | OM3 | Aqua | NN-5.3M12 | |
| SC Duplex adapters including 25 screws for NN01405-series patch panel | 12-pack | OM4 | Violet | NN-5.4M12 | |
| SC Duplex adapters including 25 screws for NN01405-series patch panel | 12-pack | SM UPC | Blue | NN-5.SM12 | |
| SC Duplex adapters including 25 screws for NN01405-series patch panel | 12-pack | SM APC | Green | NN-5.AM12 | |
| Splice trays/holders for NN0140-series patch panel | 2-pack | | | NN-SPL.TR | |

| FX@EASE Fiber Pigtails | | | | |
|---------------------------|----------|------|--------|----------------|
| Fiber Pigtails | | | | |
| Panel includes | Pack bag | Type | Length | EPN |
| LC 900u white pigtail | 12 | OM3 | 1 m | GT-39LC001MB12 |
| LC 900u white pigtail | 12 | OM4 | 1 m | GT-49LC001MB12 |
| LC 900u white pigtail | 12 | OS2 | 1 m | GT-S9LC001MB12 |
| LC/APC white pigtail | 12 | OS2 | 1 m | GT-S9LB001MB12 |
| SC 900u white pigtail | 12 | OM3 | 1 m | GT-39SC001MB12 |
| SC 900u white pigtail | 12 | OM4 | 1 m | GT-49SC001MB12 |
| SC 900u white pigtail | 12 | OS2 | 1 m | GT-S9SC001MB12 |
| SC/APC 900u white pigtail | 12 | OS2 | 1 m | GT-S9SB001MB12 |

| Patch Cord LSZH FX@EASE (standard) | | | |
|------------------------------------|----------------|----------------|----------------|
| Length | OM4 | OS2 | OS2/APC |
| LC Duplex to LC Duplex 2mm zipcord | | | |
| 2 m | GP-42LDDL002MX | GP-S2LDDL002MX | GP-S2LALA002MX |
| 3 m | GP-42LDDL003MX | GP-S2LDDL003MX | GP-S2LALA003MX |
| 5 m | GP-42LDDL005MX | GP-S2LDDL005MX | GP-S2LALA005MX |
| SC Duplex to SC Duplex 2mm zipcord | | | |
| 2 m | GP-42SDSD002MX | GP-S2SDSD002MX | GP-S2SASA002MX |
| 3 m | GP-42SDSD003MX | GP-S2SDSD003MX | GP-S2SASA003MX |
| 5 m | GP-42SDSD005MX | GP-S2SDSD005MX | GP-S2SASA005MX |





Tight Buffer Optical Characteristics

| European Part Number Coding, Position 5 | Fiber-Type | Mode-Field/Cladding Diameter (μm) | Wave-length (nm) | Attenuation average/max. (dB/km) | Dispersion (ps/nm-km) | PMD (ps/km) | Cable Cut-off Wave-length (nm) | Min. Bending Radius (mm) |
|--|-------------------------|-----------------------------------|----------------------|----------------------------------|-----------------------|--------------------|--------------------------------|--------------------------|
| Characteristics (cabled) Single-Mode • Matched-Cladded Optical Fibers according to ITU | | | | | | | | |
| A | 9/125 G.657A1 OS2 | 8,9 ± 0,4 125,0 ± 0,3 | 1310 1550 1625 | 0,35/0,4 0,21/0,3 0,24/0,4 | ≤ 3,5 ≤ 18,0 | ≤ 0,2 ^A | ≤ 1260 | 10 |
| F | 9/125 G.657A2 OS2 | 8,9 ± 0,4 125,0 ± 0,3 | 1310 1550 1625 | 0,35/0,4 0,21/0,3 0,24/0,4 | ≤ 3,5 ≤ 18,0 | ≤ 0,2 ^A | ≤ 1260 | 7,5 |
| I | 9/125 G.657B3 OS2 | 8,8 ± 0,4 125,0 ± 0,3 | 1310 1550 1625 | 0,35/0,4 0,22/0,3 0,24/0,4 | ≤ 3,5 ≤ 18,0 | ≤ 0,2 ^A | ≤ 1260 | 5,0 |

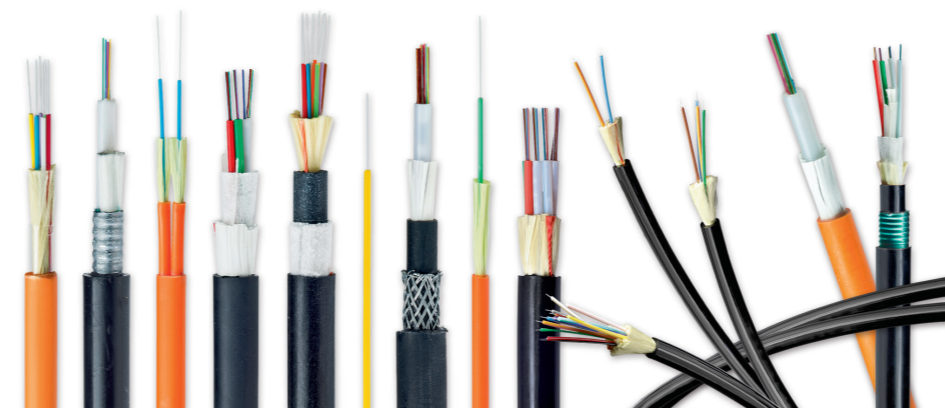
| European Part Number Coding, Position 5 | Fiber-Type | Core/Cladding Diameter (μm) | Wave-length (nm) | Attenuation Average/max. (dB/km) | Bandwidth (MHz/km) | Ethernet Performance (m) | | Num. Apert. (μm) | Min. Bending Radius (mm) |
|--|-----------------|-----------------------------|------------------|----------------------------------|--------------------|--------------------------|------------|------------------|--------------------------|
| | | | | | | 1 GBE | 10 GBE | | |
| Characteristics (cabled) Multi-Mode • Graded-Index Optical Fibers according to IEC 60793 | | | | | | | | | |
| 1 | 62,5/125 OM1 | 62,5 ± 2,5 125,0 ± 1,0 | 850 1300 | 2,7/3,0 0,7/0,8 | ≥ 200 ≥ 600 | 275 550 | 33 300 | 0,275 ± 0,015 | 25 |
| 2 | 50/125 OM2 | 50,0 ± 2,5 125,0 ± 1,0 | 850 1300 | 2,3/2,5 0,5/0,6 | ≥ 500 ≥ 500 | 600 600 | 83 300 | 0,200 ± 0,015 | 25 |
| D | 50/125 OM3 Flex | 50,0 ± 2,5 125,0 ± 1,0 | 850 1300 | 2,3/2,5 0,5/0,6 | ≥ 1500 ≥ 500 | 1100 550 | 300 300 | 0,200 ± 0,015 | 7,5 |
| E | 50/125 OM4 Flex | 50,0 ± 2,5 125,0 ± 1,0 | 850 1300 | 2,5/3,0 0,5/1,0 | ≥ 6000 ≥ 500 | 1100 550 | 550 300 | 0,200 ± 0,015 | 7,5 |

Loose Tube Optical Characteristics

| European Part Number Coding, Position 5 | Fiber-Type | Mode-Field/Cladding Diameter (μm) | Wave-length (nm) | Attenuation average/max. (dB/km) | Dispersion (ps/nm-km) | PMD (ps/km) | Cable Cut-off Wave-length (nm) |
|--|----------------------|-----------------------------------|----------------------|-------------------------------------|-----------------------|-------------|--------------------------------|
| Characteristics (cabled) Single-Mode • Matched-Cladded Optical Fibers according to ITU | | | | | | | |
| 8 | 9/125 G.652D OS2 | 9,2 ± 0,4 125,0 ± 0,7 | 1310 1550 1625 | 0,32/0,34 0,18/0,19 0,20/0,24 | ≤ 3,5 ≤ 18,0 | ≤ 0,06 | ≤ 1260 |
| 7 | 9/125 G.655 C e D | 8,4 ± 0,6 125,0 ± 1,0 | 1550 | 0,20/0,22 0,21/0,24 | ≤ 4,5 ≤ 7,9 | ≤ 0,04 | ≤ 1260 |

| European Part Number Coding, Position 5 | Fiber-Type | Core/Cladding Diameter (μm) | Wave-length (nm) | Attenuation average/max. (dB/km) | Bandwidth (MHz/km) | Ethernet Performance (m) | | Num. Apert. (μm) | Num. Apert. (μm) |
|--|--------------|-----------------------------|------------------|----------------------------------|--------------------|--------------------------|------------|------------------|------------------|
| | | | | | | 1 GBE | 10 GBE | | |
| Characteristics (cabled) Multi-Mode • Graded-Index Optical Fibers according to IEC 60793 | | | | | | | | | |
| 1 | 62,5/125 OM1 | 62,5 ± 2,5 125,0 ± 1,0 | 850 1300 | 2,7/3,2 0,7/0,8 | ≥ 200 ≥ 600 | 220 550 | 33 300 | 0,275 ± 0,015 | 1,495 1,490 |
| 2 | 50/125 OM2 | 50,0 ± 2,5 125,0 ± 1,0 | 850 1300 | 2,3/2,5 0,5/0,6 | ≥ 500 ≥ 500 | 600 600 | 83 300 | 0,200 ± 0,015 | 1,481 1,476 |
| D | 50/125 OM3 | 50,0 ± 2,5 125,0 ± 1,0 | 850 1300 | 2,3/2,5 0,5/0,6 | ≥ 1500 ≥ 500 | 1000 550 | 300 300 | 0,200 ± 0,015 | 1,482 1,477 |
| E | 50/125 OM4 | 50,0 ± 2,5 125,0 ± 1,0 | 850 1300 | 2,3/2,5 0,5/0,6 | ≥ 6000 ≥ 500 | 1100 550 | 550 300 | 0,200 ± 0,015 | 1,482 1,477 |

Note A: Link design value





Ordering Information

| Fiber Type/Count | 2 | 4 | 6 | 8 | 12 | 16 | 24 |
|------------------------------------|--|----------|----------|----------|----------|----------|----------|
| GUSN (Dca) | | | | | | | |
| 62.5/125-OM1 | GUSN102 | GUSN104 | GUSN106 | GUSN108 | GUSN112 | GUSN116 | GUSN124 |
| 50/125-OM2 | GUSN202 | GUSN204 | GUSN206 | GUSN208 | GUSN212 | GUSN216 | GUSN224 |
| 50/125-OM3 | GUSND02 | GUSND04 | GUSND06 | GUSND08 | GUSND12 | GUSND16 | GUSND24 |
| 50/125-OM4 | GUSNE02 | GUSNE04 | GUSNE06 | GUSNE08 | GUSNE12 | GUSNE16 | GUSNE24 |
| 9/125 ITU G.652D | GUSN802 | GUSN804 | GUSN806 | GUSN808 | GUSN812 | GUSN816 | GUSN824 |
| 9/125 ITU G.655 C e D | GUSN702 | GUSN704 | GUSN706 | GUSN708 | GUSN712 | GUSN716 | GUSN724 |
| GUSNC (Cca) | | | | | | | |
| 62.5/125-OM1 | GUSNC102 | GUSNC104 | GUSNC106 | GUSNC108 | GUSNC112 | GUSNC116 | GUSNC124 |
| 50/125-OM2 | GUSNC202 | GUSNC204 | GUSNC206 | GUSNC208 | GUSNC212 | GUSNC216 | GUSNC224 |
| 50/125-OM3 | GUSNCD02 | GUSNCD04 | GUSNCD06 | GUSNCD08 | GUSNCD12 | GUSNCD16 | GUSNCD24 |
| 50/125-OM4 | GUSNCE02 | GUSNCE04 | GUSNCE06 | GUSNCE08 | GUSNCE12 | GUSNCE16 | GUSNCE24 |
| 9/125 ITU G.652D | GUSNC802 | GUSNC804 | GUSNC806 | GUSNC808 | GUSNC812 | GUSNC816 | GUSNC824 |
| 9/125 ITU G.655 C e D | GUSNC702 | GUSNC704 | GUSNC706 | GUSNC708 | GUSNC712 | GUSNC716 | GUSNC724 |
| GUSNB (B2Ca) | | | | | | | |
| 62.5/125-OM1 | GUSNB102 | GUSNB104 | GUSNB106 | GUSNB108 | GUSNB112 | GUSNB116 | GUSNB124 |
| 50/125-OM2 | GUSNB202 | GUSNB204 | GUSNB206 | GUSNB208 | GUSNB212 | GUSNB216 | GUSNB224 |
| 50/125-OM3 | GUSNBD02 | GUSNBD04 | GUSNBD06 | GUSNBD08 | GUSNBD12 | GUSNBD16 | GUSNBD24 |
| 50/125-OM4 | GUSNBE02 | GUSNBE04 | GUSNBE06 | GUSNBE08 | GUSNBE12 | GUSNBE16 | GUSNBE24 |
| 9/125 ITU G.652D | GUSNB802 | GUSNB804 | GUSNB806 | GUSNB808 | GUSNB812 | GUSNB816 | GUSNB824 |
| 9/125 ITU G.655 C e D | GUSNB702 | GUSNB704 | GUSNB706 | GUSNB708 | GUSNB712 | GUSNB716 | GUSNB724 |
| GURN (Dca) | | | | | | | |
| 62.5/125-OM1 | GURN102 | GURN104 | GURN106 | GURN108 | GURN112 | GURN116 | GURN124 |
| 50/125-OM2 | GURN202 | GURN204 | GURN206 | GURN208 | GURN212 | GURN216 | GURN224 |
| 50/125-OM3 | GURND02 | GURND04 | GURND06 | GURND08 | GURND12 | GURND16 | GURND24 |
| 50/125-OM4 | GURNE02 | GURNE04 | GURNE06 | GURNE08 | GURNE12 | GURNE16 | GURNE24 |
| 9/125 ITU G.652D | GURN802 | GURN804 | GURN806 | GURN808 | GURN812 | GURN816 | GURN824 |
| 9/125 ITU G.655 C e D | GURN702 | GURN704 | GURN706 | GURN708 | GURN712 | GURN716 | GURN724 |
| GURNC (Cca) | | | | | | | |
| 62.5/125-OM1 | GURNC102 | GURNC104 | GURNC106 | GURNC108 | GURNC112 | GURNC116 | GURNC124 |
| 50/125-OM2 | GURNC202 | GURNC204 | GURNC206 | GURNC208 | GURNC212 | GURNC216 | GURNC224 |
| 50/125-OM3 | GURNCD02 | GURNCD04 | GURNCD06 | GURNCD08 | GURNCD12 | GURNCD16 | GURNCD24 |
| 50/125-OM4 | GURNCE02 | GURNCE04 | GURNCE06 | GURNCE08 | GURNCE12 | GURNCE16 | GURNCE24 |
| 9/125 ITU G.652D | GURNC802 | GURNC804 | GURNC806 | GURNC808 | GURNC812 | GURNC816 | GURNC824 |
| 9/125 ITU G.655 C e D | GURNC702 | GURNC704 | GURNC706 | GURNC708 | GURNC712 | GURNC716 | GURNC724 |
| GURNB (B2Ca) | | | | | | | |
| 62.5/125-OM1 | GURNB102 | GURNB104 | GURNB106 | GURNB108 | GURNB112 | GURNB116 | GURNB124 |
| 50/125-OM2 | GURNB202 | GURNB204 | GURNB206 | GURNB208 | GURNB212 | GURNB216 | GURNB224 |
| 50/125-OM3 | GURNBD02 | GURNBD04 | GURNBD06 | GURNBD08 | GURNBD12 | GURNBD16 | GURNBD24 |
| 50/125-OM4 | GURNBE02 | GURNBE04 | GURNBE06 | GURNBE08 | GURNBE12 | GURNBE16 | GURNBE24 |
| 9/125 ITU G.652D | GURNB802 | GURNB804 | GURNB806 | GURNB808 | GURNB812 | GURNB816 | GURNB824 |
| 9/125 ITU G.655 C e D | GURNB702 | GURNB704 | GURNB706 | GURNB708 | GURNB712 | GURNB716 | GURNB724 |
| GUSN - GURN | | | | | | | |
| Std. plywood reel (non-returnable) | Ø 800 x 475 mm, Weight 7.65 kg and Ø 1000 x 530 mm, Weight 18.0 kg | | | | | | |
| Std. delivery length | 2100 ± 100 m and 4100 ± 100 m | | | | | | |

Ordering Information

| Fiber Type/Count | 2 | 4 | 6 | 8 | 12 | 16 | 24 | 36 | 48 | 72 | Jacket Color |
|------------------------------------|------------------------------|------------------------------|-------------------------------|---------|---------|---------|-------------------------------|-------------------------------|---------|---------|-------------------------|
| GUMT • Tight Buffer | | | | | | | | | | | |
| 62.5/125-OM1 | GUMT102 | GUMT104 | GUMT106 | GUMT108 | GUMT112 | GUMT116 | GUMT124 | GUMT136 | GUMT148 | GUMT172 | Orange |
| 50/125-OM2 | GUMT202 | GUMT204 | GUMT206 | GUMT208 | GUMT212 | GUMT216 | GUMT224 | GUMT236 | GUMT248 | GUMT272 | Orange |
| 50/125-OM3 | GUMTD02 | GUMTD04 | GUMTD06 | GUMTD08 | GUMTD12 | GUMTD16 | GUMTD24 | GUMTD36 | GUMTD48 | GUMTD72 | Aqua |
| 50/125-OM4 | GUMTE02 | GUMTE04 | GUMTE06 | GUMTE08 | GUMTE12 | GUMTE16 | GUMTE24 | GUMTE36 | GUMTE48 | GUMTE72 | Erika-Violet (RAL 4003) |
| 9/125 ITU G.657A1 | GUMTA02 | GUMTA04 | GUMTA06 | GUMTA08 | GUMTA12 | GUMTA16 | GUMTA24 | GUMTA36 | GUMTA48 | GUMTA72 | Yellow |
| 9/125 ITU G.657A2 | GUMTF02 | GUMTF04 | GUMTF06 | GUMTF08 | GUMTF12 | GUMTF16 | GUMTF24 | GUMTF36 | GUMTF48 | GUMTF72 | Yellow |
| 9/125 ITU G.657B3 | GUMTI02 | GUMTI04 | GUMTI06 | GUMTI08 | GUMTI12 | GUMTI16 | GUMTI24 | GUMTI36 | GUMTI48 | GUMTI72 | Yellow |
| GUMT | | | | | | | | | | | |
| Std. plywood reel (non-returnable) | Ø 560 x 336 mm, peso 4,25 kg | Ø 800 x 475 mm, peso 7,65 kg | Ø 1000 x 530 mm, peso 18,0 kg | | | | Ø 1000 x 530 mm, peso 18,0 kg | Ø 1250 x 688 mm, peso 93,0 kg | | | |
| Lunghezza di consegna standard | 2100 ± 100 m | 2100 ± 100 m | 2100 ± 100 m | | | | 650 ± 100 m | 650 ± 100 m | | | |



| | |
|---|--------------|
| WireNET® Infrastructure | 24-31 |
| Basic Power Distribution Units..... | 25 |
| E-Series LAN and Wall Mount Cabinets..... | 26-29 |
| Cable Management Accessories..... | 30-31 |

Belden Basic PDUs offers reliable power distribution to the cabinet to help manage power capacity and increase functionality. Get instant power usage feedback by adding a local display to avoid overloads and costly downtime when moving critical equipment.

The Belden Upgradeable power strips give data center managers the flexibility to install the intelligence they require today with the option to upgrade technology as needs evolve.



| Part Number | Category | Sub Category | Volts | Amps | Plug Form | Configuration | Receptacle Qty 1 | Receptacle Type 1 | Receptacle Qty 2 | Receptacle Type 2 | Breaker | Color |
|--------------------|----------|--------------|---------------|------|---------------|---------------------|------------------|-------------------|------------------|-------------------|---------|-------|
| Basic | | | | | | | | | | | | |
| Standard | | | | | | | | | | | | |
| PDU-3044 | Basic | Standard | 230 V | 16 A | 2P+E (IP44) | Horizontal/Vertical | 8 | IEC C13 | 0 | 0 | No | Black |
| PDU-10402 | Basic | Standard | 230 V | 13 A | BS1363 | Horizontal | 8 | BS1363 | 0 | 0 | No | Black |
| PDU-10515 | Basic | Standard | 230 V | 32 A | 2P+E (IP44) | Vertical | 20 | IEC C13 | 4 | IEC C19 | Yes | Black |
| PDU-10813 | Basic | Standard | 230 V | 16 A | Schuko | Horizontal | 6 | German Schuko | 0 | 0 | No | Black |
| Upgradeable | | | | | | | | | | | | |
| PDU-11875 | Basic | Upgradeable | 230 V | 32 A | 2P+E (IP44) | Horizontal | 12 | Locking IEC C13 | 4 | Locking IEC C19 | Yes | Black |
| PDU-12225 | Basic | Upgradeable | 230/400 V WYE | 32 A | 3P+N+E (IP44) | Vertical | 36 | Locking IEC C13 | 6 | Locking IEC C19 | No | Black |

E-Series LAN Cabinets

EDL – Light Data Cabinets – 400 kg



Light Data Cabinet serie is a multipurpose cabinet for 19" Data and LAN applications. An extensive range of depths and heights are available in both 600 mm and 800 mm width.



Features

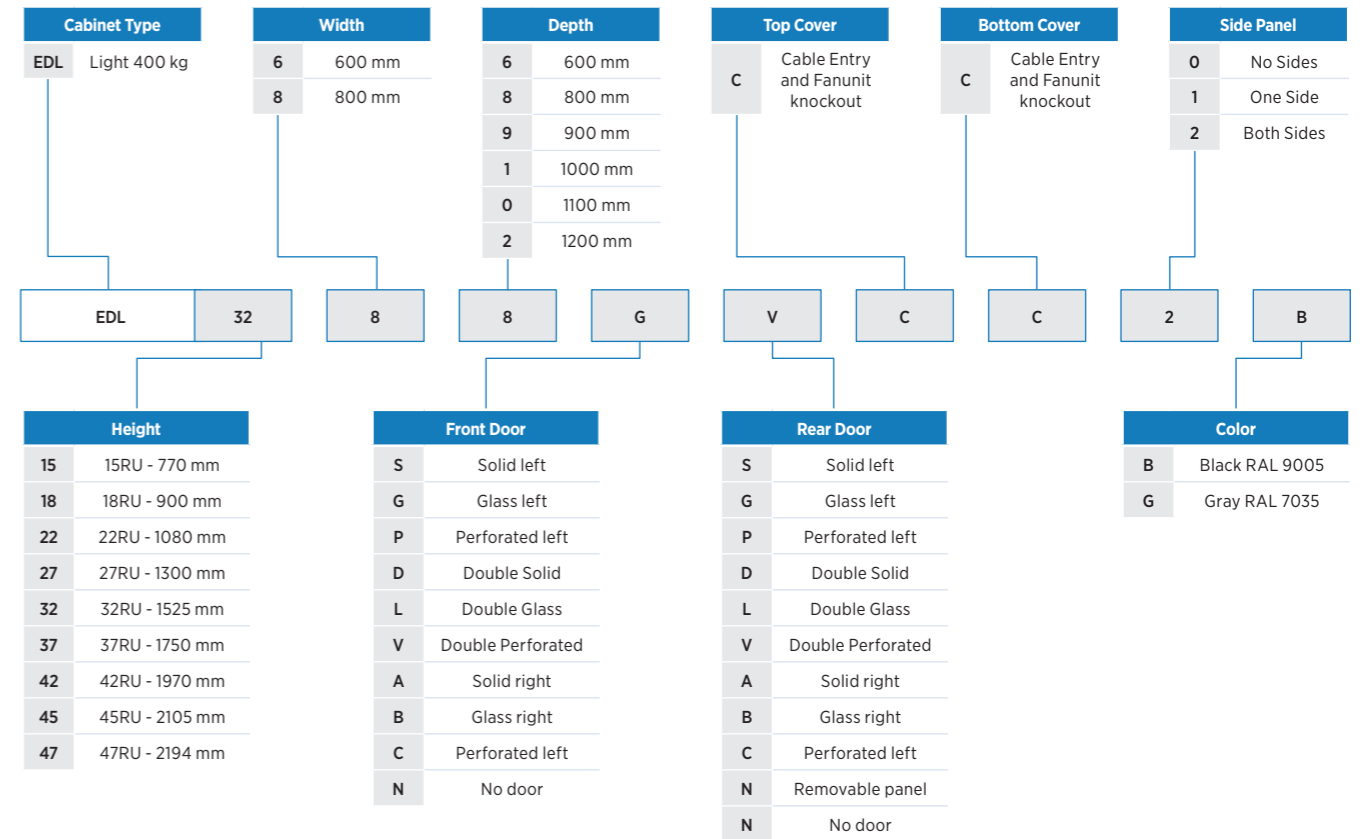
- 4 Sliding vertical rails for mounting (6 rails for cabinets deeper than 800 mm)
- Main grounding point is on the bottom of the cabinet by one M8 screw
- Top cover has knockout cut-outs for fan-unit and various cable entries
- Optional cable routing sides for between cabinets
- IP20 protection

Construction

- Welded steel frame with a maximum load capacity of 400 kg
- Frame out of Cold-rolled steel 1.3 mm
- Side panels and doors: 1.0 mm

Door and Sides

- Solid Steel door with rigid design
- Glass door with safety tempered glass of 4 mm
- Perforated door with 80% airflow with mesh pattern
- Maximum load 20 kg on the doors



Part number example:

EDL3268GVCC2B

Cabinet Light (400 kg) 32U 600 x 800 mm, Glass left door Front and Double perforated door Rear, Cable and fanunit cover, Cable and fanunit cover, 2 Removable sides (solid), Black



Belden Wall Mount Cabinets for use in 19" Data, Telecommunications and Networking applications. This basic range is suitable to build in the wall when no rear or side access is required and space can be saved.



Features

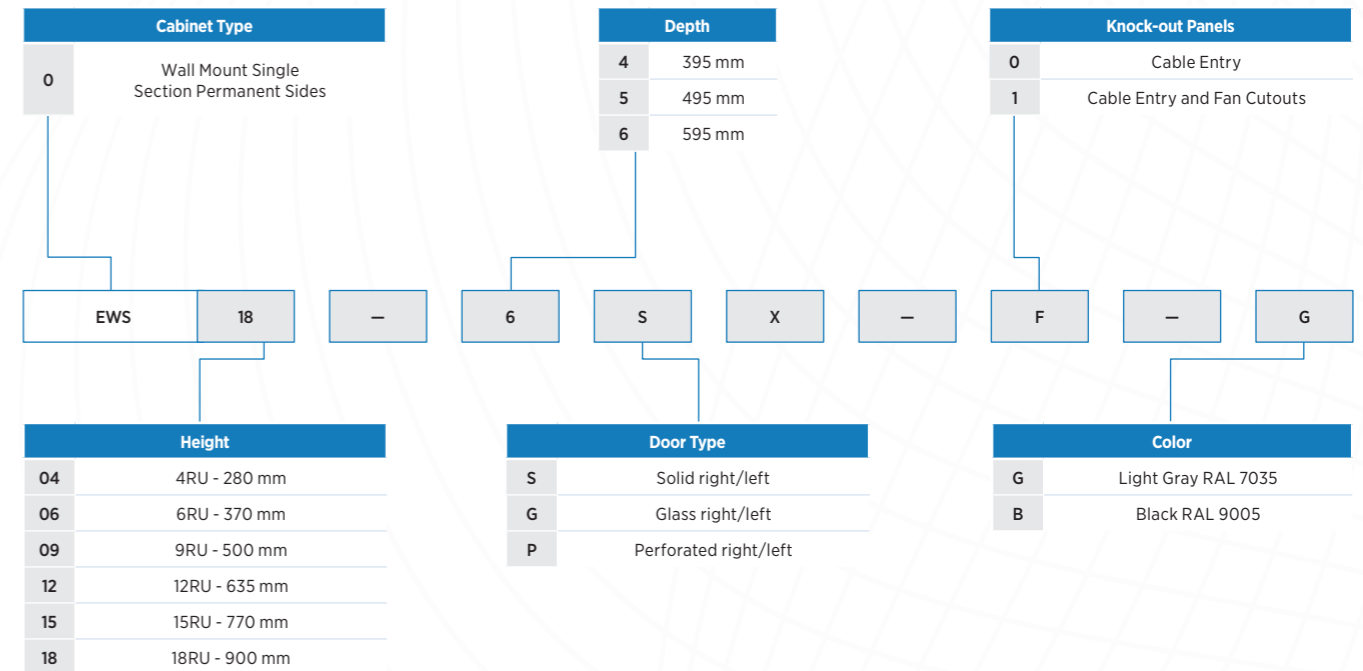
- One pair of vertical 19" rails is freely adjustable in any depth of the cabinet. This simplifies mounting of devices and organisation of connecting cables
- All components interconnect with ground wire and Main grounding point on bottom (M8 stud)
- Optical knock outs available on top and bottom for fan and cable entries
- IP30 protection

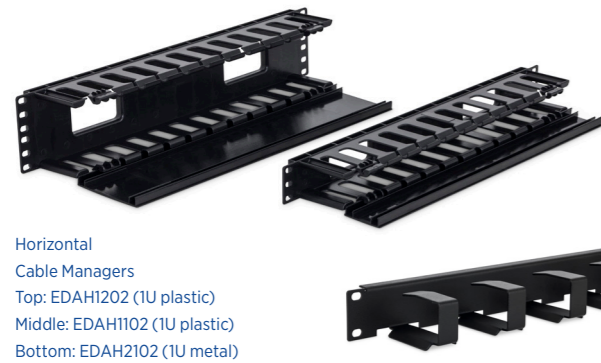
Door and Sides

- The cabinet has fully glass door in standard. It can be steel or perforated if required
- The hinge system allows the door to open almost 180°. The door can be easily removed and re-mounted to change the direction of opening
- The cabinet is typically build in a wall when no side access is required

Construction

- Welded steel frame with a maximum load capacity of 30 kg





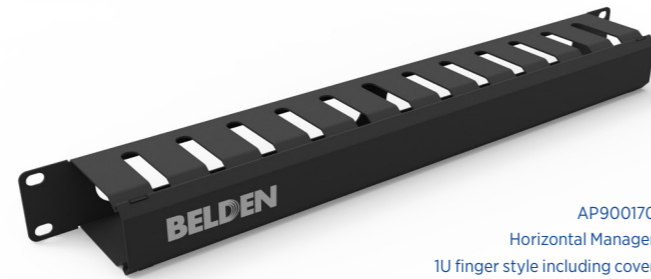
Horizontal Cable Managers
 Top: EDAH1202 (1U plastic)
 Middle: EDAH1102 (1U plastic)
 Bottom: EDAH2102 (1U metal)

Features include:

- 1RU to 4RU height
- 19" mount includes mounting hardware
- Compatible with racks and cabinets
- Selection of ring, finger and cable tie bar style horizontal managers
- Standard color is black (other colors available on volume orders)

Application

Horizontal managers allow routing of copper and fiber cables/patch cords in racks and cabinets while helping to maintain proper bend radius and organize array for ease of moves, adds and changes.



AP900170
 Horizontal Manager
 1U finger style including cover

| Description | RU | Manager Cross Section H x D | Part Number |
|---|-----|-----------------------------|-------------|
| Horizontal Cable Managers | | | |
| Horizontal Cable Manager, Plastic, with Fingers and Cover | 1RU | 42 x 50 mm | EDAH1102 |
| Horizontal Cable Manager, Plastic, with Fingers and Cover | 2RU | 75 x 50 mm | EDAH1202 |
| Horizontal Cable Manager, Metal, with Rings and Cable Guiding, Black | 1RU | 42 x 50 mm | EDAH2102 |
| Horizontal Cable Manager, Metal, with Rings and Cable Guiding, Light Gray | 1RU | 42 x 50 mm | EDAH2101 |
| Horizontal Cable Manager, Black | 1RU | 42 x 50 mm | AP900170 |

Application

- Filler Panels allow blocking of unused rack units (RU) for optimized airflow and separation between cold supply air and hot return air
- Best practices in Data Centers includes blanking of all unused rack units (RU)
- Filler Panels are compatible with 19" mount racks and cabinets



Steel Filler Panels



Metal Filler with Brushes
 EDAP3312

| Description | Color | Part Number |
|---|--------------------|--------------------|
| Filler Panels | | |
| Metal | | |
| 1RU Metal Filler Solid incl. cage nut | Light Gray / Black | EDAP1011/2 |
| 2RU Metal Filler Solid incl. cage nut | Light Gray / Black | EDAP1021/2 |
| 3RU Metal Filler Solid incl. cage nut | Light Gray / Black | EDAP1031/2 |
| 4RU Metal Filler Solid incl. cage nut | Light Gray / Black | EDAP1041/2 |
| 1RU Metal Filler With Brush incl. cage nuts | Light Gray / Black | EDAP3311/2 |
| Plastic Tool-Less | | |
| 1RU Solid Filler Panel (fits 10-32, 12-24 and square holes rails) | Black/CO White | 9910-0100PL-01/-02 |
| 2RU Solid Filler Panel (fits 10-32, 12-24 and square holes rails) | Black/CO White | 9911-0200PL-01/-02 |



BROCHURE

GLOBAL LOCATIONS

EUROPE/MIDDLE EAST/AFRICA

France

Phone: +33-472-109-990
lyon.salesinfo@belden.com

Germany

Phone: +49-7127-14-0
venlo.salesinfo@belden.com

Italy

Phone: 0545 60470
bagnacavallo.itc@belden.com

Russia

Phone: +7-495-787-06-55
info@belden.ru

Spain

Phone: +34-91-746-17-30
madrid.salesinfo@belden.com

Sweden

Phone: +46-40-699-88-60
venlo.salesinfo@belden.com

The Netherlands

Phone: +31-773-878-555
venlo.salesinfo@belden.com

United Arab Emirates

Phone: +971-4-391-0490
dubai.salesinfo@belden.com

United Kingdom

Phone: +44-161-49837-49
manchester.salesinfo@belden.com

AMERICAS

USA

Phone: +1-800-BELDEN1
(1-800-235-3361)

ASIA/PACIFIC

China

Phone: +86-21-5445-2388
apac.ecsmarketing@belden.com

Singapore

Phone: +65-6879-9800
apac.ecsmarketing@belden.com

