

High-performing warehouses need High-performance wireless networks

Infographic



Modern warehouses must operate at peak efficiency — in dynamic, ever-changing environments — to meet more and more challenging service-level agreement metrics.

But what if the network can't keep up? Risks could arise anywhere across the warehouse floor, impacting fulfillment, worker safety and, ultimately, business performance.

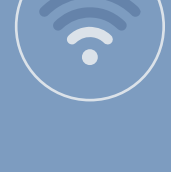
Let's explore two scenarios:



First, a digitized warehouse with numerous robots in its storage, picking and other areas but operating with an unoptimized data network.

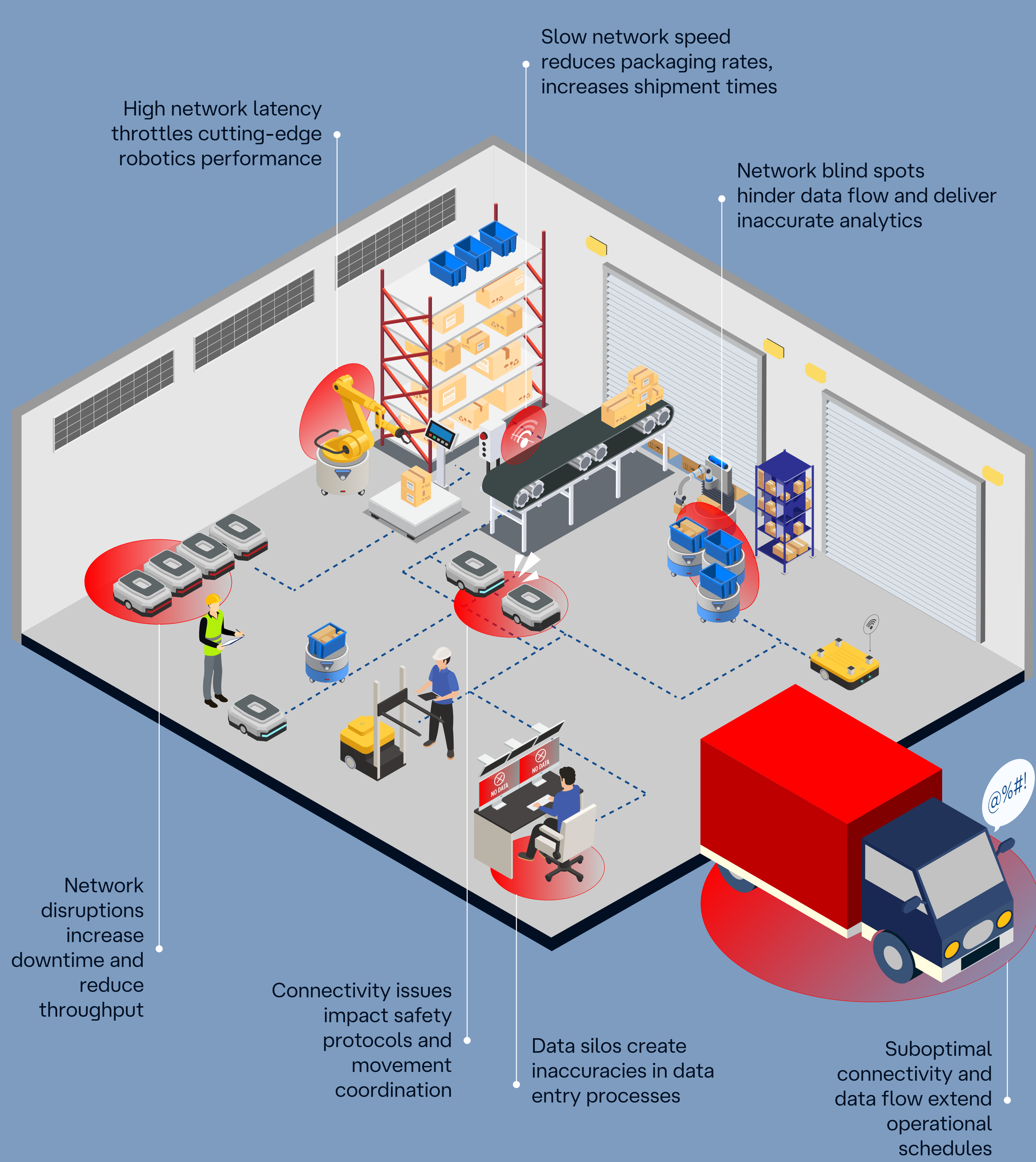


Next, the same warehouse with a reliable, flexible network that unlocks unparalleled efficiency and greater value from enterprise IT investments.



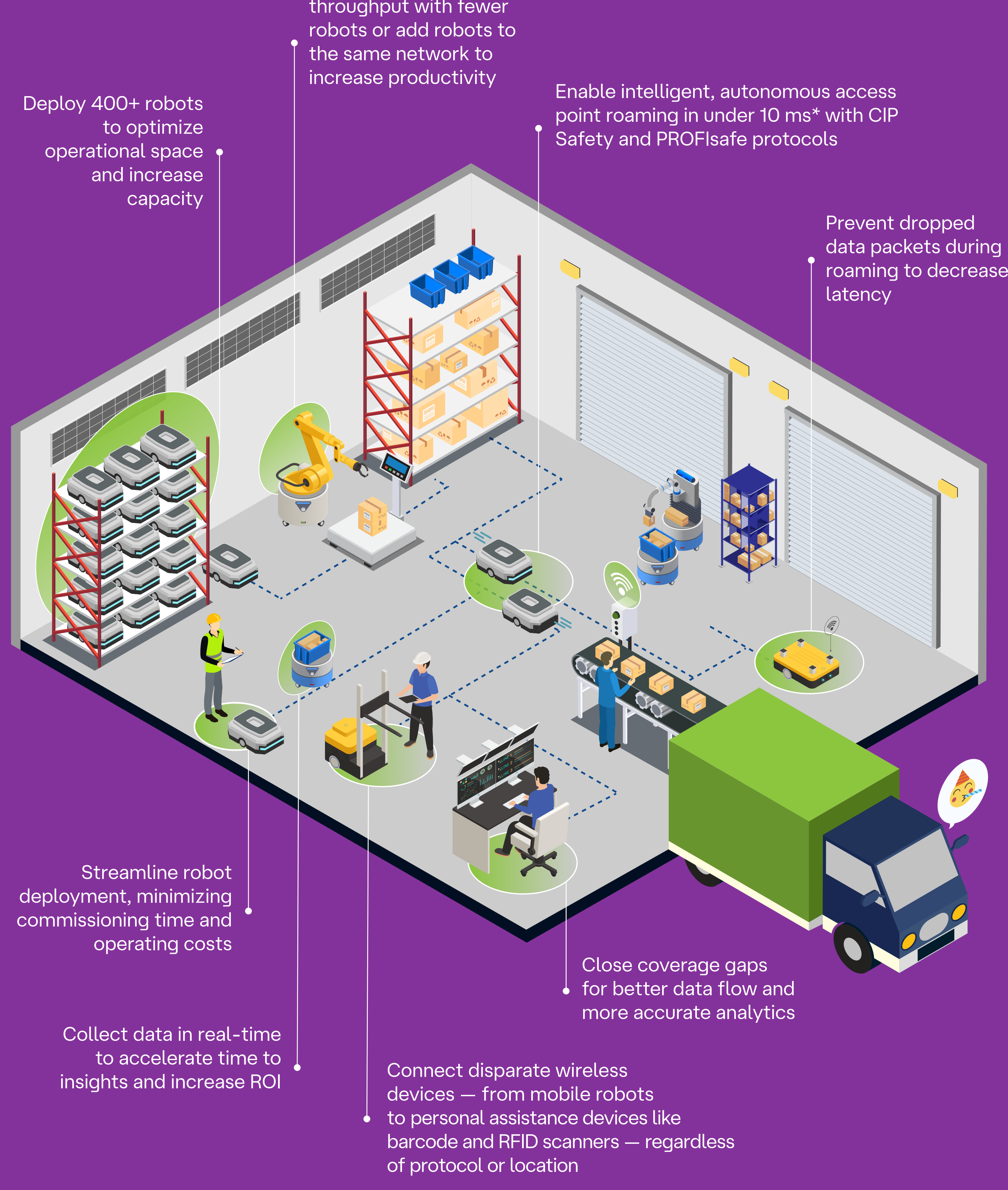
A network unable to meet rising demand

High latency, unplanned disconnections and downtime, wireless network instability and coverage gaps wreak havoc on operations.



An optimized wireless network to power today's intelligent warehouse

A resilient, fast and future-ready wireless network delivers minimal latency and disruptions. Now, robots can operate safely and efficiently, and the facility can maximize its performance, uptime and warehouse throughput.

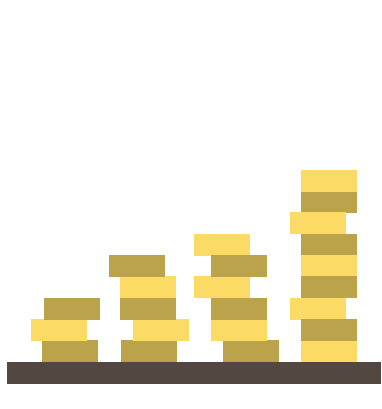


* For RLX2 products

Better wireless data networks = Better business performance

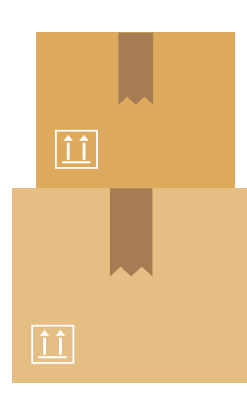
Wirelessly connecting data, devices, systems and people while enhancing accuracy and security produces better operational outcomes.

Belden clients have reported:



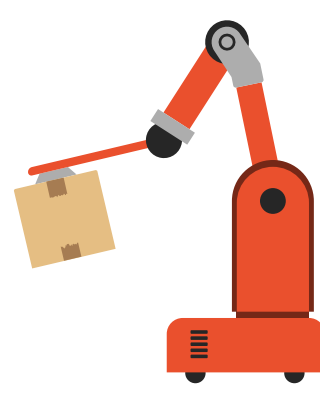
\$3 Million

Potential revenue increase with < 1.5 - year ROI



10%-15% Boost

in processing rates

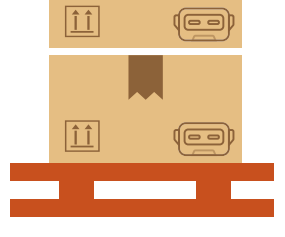


99% Reduction

in network disconnections

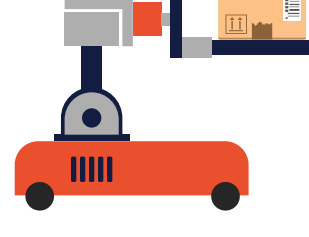
Rise of the robots

Year-over-year e-commerce growth is driving demand for autonomous guided vehicles (AGVs), autonomous mobile robots (AMRs), dense storage and micro-fulfillment centers. As all these systems come online, warehouses need to have networks that can handle the increasing loads.



~670,000

Projected mobile robots shipped by 2028*



2.7 Million

Projected installed mobile robot base by the end of 2028*



\$20 Billion

Projected total AGV and AMR market in 2028 *

We drive digital transformation for intelligent warehouses

Belden's fast, stable and resilient wireless networks set the standard in scalable and secure warehouse automation. Our industry expertise has made us a trusted partner to some of the leading large-scale wireless-enabled mobile solutions providers in the market.

Ready to elevate warehouse operations with unified network control, future-proof connectivity and fail-safe performance?

It's time to build the automated, next-gen warehouse.

Talk with our experts [→](#)

© Copyright 2025 Belden Inc.

About Belden
Belden Inc. delivers complete connection solutions that unlock untold possibilities for our customers, their customers and the world. We advance ideas and technologies that enable a safer, smarter and more prosperous future. Throughout our 120+ year history we have evolved as a company, but our purpose remains – making connections. By connecting people, information and ideas, we make it possible. We are headquartered in St. Louis and have manufacturing capabilities in North America, Europe, Asia and Africa. For more information, visit us at www.belden.com, follow us on [LinkedIn](#), [Instagram](#), [Twitter/X](#) and [Facebook](#).

www.belden.com