



Preis Information BELDEN Industrial Automation Solutions (IAS)


Version 2.0.1 RC1 [20240326]


Valid as of 1st of July 2024 for EMEA

Valid as of 1st of January 2024 for USA, Canada & Latin America




HIRSCHMANN
A BELDEN BRAND


lumbergautomation
A BELDEN BRAND



TOFINO SECURITY
A BELDEN BRAND


macmon
smartly simple


NET MODULE






Welcome


Enter Access Code

Please type in your access code:
Bitte geben Sie Ihren Zugangscode ein:


Confirm Code


Exit Application



© 2021 Belden Inc. | belden.com | @BeldenInc

Price List Info Database Industrial Automation Solutions (IAS)


lumbergautomation
A BELDEN BRAND






HIRSCHMANN
A BELDEN BRAND


TOFINO SECURITY
A BELDEN BRAND


macmon
smartly simple

Price Information Industrial Automation Solutions (IAS)

Application Version: 2.0.0 RC1 [20231213]

Valid as of: 01.01.2024




My data


Release notes


Version


Shop


Feedback

The data in the price list info database is subject to change without notice. All prices and specifications need to be acknowledged with an official confirmation of order by Hirschmann Automation and Control GmbH. BELDEN cannot be held liable for any damage arising in connection with the use of the Industrial Automation Solutions (IAS) Price List Info Database application under any circumstances.



Application manual: **Preis Information Industrial Automation Solutions (IAS)**

Contents

Thank you for using the Price Information Industrial Automation Solutions (IAS) application.

This application manual contains complete instructions for installation and use.

The help texts are also available within the program if you click the **<Help>** button in the various dialogs.



Page Content

3	Installation (Windows only) & Setup
6	Overview & Product Tree View
8	Entering and editing customer data
10	Shopping cart functions
13	<i>Lists</i> : Display price list
14	<i>Lists</i> : Display log file
15	<i>Lists</i> : Other lists
16	<i>Products</i> : Single display (Hardware & Services)
17	<i>Products</i> : Hardware detail view
19	<i>Products</i> : Services detail view
21	<i>Configurators</i> : Common functions & Configurator Overview & Search Option
25	<i>Configurators</i> : OpenRAIL (RS20,RS22,RS30,RS32,RS40) & Bobcat (BRS20 > BRS56)
26	<i>Configurators</i> : OpenRAIL Power Family (RSP & RSPS)
27	<i>Configurators</i> : BAT Wireless Family (BAT-R)
28	<i>Configurators</i> : BAT Wireless Family (BAT450-F, BAT867-R) & EAGLE Security Router (EAGLE20, 30, 40)
29	<i>Configurators</i> : EAGLEONE Security Router / TOFINO Xenon Security Appliance
30	<i>Configurators</i> : MICE Switch (MS20, MS30), Media Module (MM2, MM3) & Backplane (MB20)
31	<i>Configurators</i> : MSP Switch (MICE Switch Power: MSP30, MSP32)
32	<i>Configurators</i> : MSP Media Module (MICE Switch Power: MSM2, MSM4)
33	<i>Configurators</i> : MACH1020/1030 (MAR1020,1022,1030,1032,1120,1122,1130,1132)
34	<i>Configurators</i> : MACH1040 (MAR1040,1042,1140,1142)
35	<i>Configurators</i> : OpenRAIL Power Enhanced (RSPE)
36	<i>Configurators</i> : OpenRAIL Power Enhanced Media Modules (RSPM)
37	<i>Configurators</i> : GREYHOUND 1020/1030 Switch (GRS) / Media Module (GRM)
39	<i>Configurators</i> : GREYHOUND 1040 Switch (GRS) / Media Module (GMM) / Power Supply (GPS)
41	<i>Configurators</i> : GREYHOUND 105/106 Switch (GRS)
42	<i>Configurators</i> : EESX Embedded Ethernet Switch Extreme (EESX), RED25 Redundancy Switch (RED25) SPIDER III Entry Level Switch (SPIDER-SL, SPIDER-PL)
43	<i>Configurators</i> : OCTOPUS II (OS20, OS30) & OCTOPUS III (OS3)
45	<i>Configurators</i> : MIPP Modular Industrial Patch Panel (MIPP)
46	<i>Configurators</i> : Tools - Configuration Check
48	Version & Update Check
50	Uninstall
51	F.A.Q.

All terms and instructions in this manual refer to the Microsoft Windows operating systems XP, Vista, 7, 8, 8.1. and 10

Application manual: **Preis Information Industrial Automation Solutions (IAS)**

Installation Windows only

The Price Information Industrial Automation Solutions (IAS) application is a JAVA Swing program.

You need a current version of the JAVA runtime environment (JRE) installed on your computer to use it. The JRE is also needed for example to use the web interfaces of our managed switches,



On demand you can download the Oracle JRE from here:

<http://java.com/download>

Alternatively you can also use the Amazon Corretto JRE which you can download from here:

<https://corretto.aws/downloads/latest/amazon-corretto-8-x86-windows-jdk.msi>

For **Windows** XP, 7,8,10 and 11 the application is installed using a standard setup routine.

At least the Wide SXGA (1600x900 pixel) resolution is recommended as screen resolution. Ideally, use a screen with a Full HD resolution (1920 x 1080 pixels), which is often referred to as HD1080.

Please follow these steps to install the application using the standard setup routine on Windows.

(Please remove any previously installed version before running the installation file ([see here](#)).)

1. Go to our website

<https://www.belden.com/resources/hirschmann-pricing-tool>

and click the **<Price List for Windows>** button,
to download the current version of the installation program "PriceListSetup.zip".

2. Unzip the file and start the installation file "PriceListSetup.exe".

Please see page 52 of this manual if you run into issues with the download or the unzipping of the setup file.

3. Select your language and you will then be guided through the installation.

4. After the installation you can open the application using either the entry "Industrial Automation Solutions (IAS) Price Info App" in the Windows start menu or via the equally named icon on your desktop.

Application manual: Preis Information Industrial Automation Solutions (IAS)

Setup

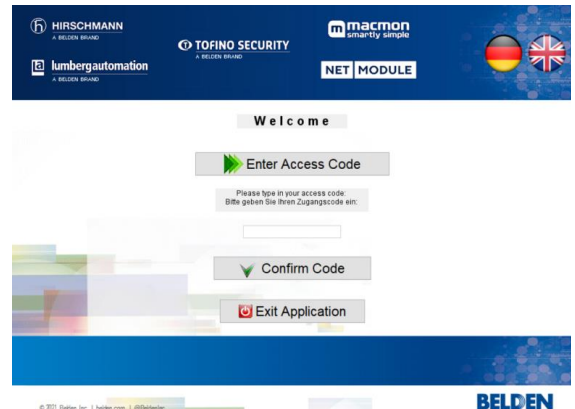
The first time you start the application you have to enter your “access code” and your address data.

You have received your “access code” by mail.

Please enter it exactly as printed.

Please contact your Belden sales representative if you do not yet have an “access code”.

After this the window for your customer data opens automatically.



When you also enter your email address in the organisation data (1) you will be able to use the [shopping cart](#) feature.

Your data is used only to reply on your feedback or inquiry mail.

The mails which are created by the application will be forwarded to the standard email program of your computer, but they are not sent automatically.

You can modify the mail to your needs beforehand.

If you do not enter address data at this point you can use the application anyway but the shopping cart feature cannot be used.

The first “**check box**” controls whether you would like to use the old overview instead of the new product tree view. With the next start the application then shows the old overview as it was available until the application version 1.6.5 RC2 [20180305].

However, it is recommended to use the new tree view as for future versions the old overview possibly might no more be available.

The second “**check box**” only is available if the new tree view is checked. It controls whether the new tree view should be displayed immediately after the main window when the application starts. This saves you at least one click on the big red start button in the main window... ;-)

The third “**check box**” either defines a “CrLf” (new line) or a semi colon (;) as delimiter character for the clipboard function of all configurators.

If you have a partner discount (2) for the INET products you can type it here as well and save it. ([more details can be found here](#))

Application manual: Preis Information Industrial Automation Solutions (IAS)

Setup

The privacy policy (3) is explained in this window and you have to agree to it by checking the check box below when you want to make use of the [shopping cart](#) feature.

Please also check that you have registered your email address in this case.

Save your data with a click
On the **<Save>** button.

The program will check your input
and complains if necessary.

Then you can use the price list application.



A special feature of the program is that you can also use it “offline” without an internet connection after a successful installation. However automatic checking for updates can only take place when you are connected with the internet and the **<Web Catalog>** button of course also only works when you are online.



Privacy Policy

The privacy policy is explained in this window and you can agree to it by checking the check box below. Without your agreement you cannot use the shopping cart function and no data is stored by BELDEN.

Disclaimer

Hirschmann cannot be held liable for any damage arising in connection with the use of the Price Information Industrial Automation Solutions (IAS) application under any circumstances.

This application uses Google Analytics, a web analytics service provided by Google, Inc. Personal data will not be transferred to the servers of Google.

Just each start of the application will be added to a total counter in combination with your country code.

The data which is sent from the application to Google will not be associated with any other data held by Google.

Application manual: Preis Information Industrial Automation Solutions (IAS)

Overview window

This dialog is the new main overview of the application.

A click on the big red **<START>** button opens the new product tree view window (see below and page 6)

Below you find various buttons:

<My data>

Here you can edit [your address data](#) and your partner discount or change the display language of the program.

<Release notes>

Displays a report of the recent program changes.

<Version>

Opens the manual application [version check](#) dialog.

<Shop>

Opens the [shopping cart](#) window.

<Feedback>

Creates an email where you can give feedback about the new application overview.

<Exit>

Quits the application.



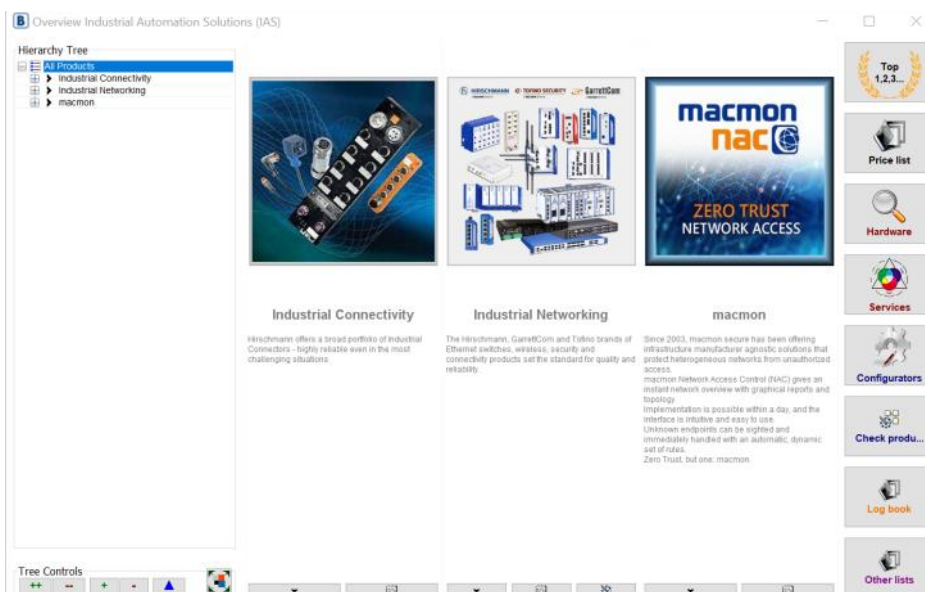
Product Tree View

The new tree view displays the complete INET product portfolio in three bands of the window.

On the **left** you will see a hierarchy tree as you know it e.g. from the Explorer of your Windows computer.

In the **middle** you will find the **product groups** with an image and a short text which are related to the selected entry in the tree.

On the **right** side you will find various buttons which are explained on the next page in details.



The product groups which are displayed in the middle show up to three little buttons at the bottom. The **<V>** button only appears when there are further sub groups available for a group. Clicking it "dives" into these sub groups and simultaneously the selection in the tree on the left side is set accordingly. Alternatively you can also just make a click on the product group image to dive one level deeper inside the product hierarchy.

As soon as you are in a sub group you can get back to a higher level again by clicking the **<blue arrow up>** button below the tree or you just make a click on a higher level entry in the tree itself.

The **<Glasses>** button switches the view in the middle band to a table of the products which belong to this group. (See screenshot on the next page)

The **<Magic wand>** button opens all freely configurable product series which are associated to the current product group in a new window. ([see also here](#))



DIN Rail Switches
Ruggedized unmanaged and managed Ethernet switches for DIN rail mounting.



Application manual: Preis Information Industrial Automation Solutions (IAS)

Product Tree View

When you have switched to the list view using the **<Glasses>** button you will find a search field above the table named **<Quick filter>**. You can use it to search in the table for any item fast and easy.

You can open a product with a double click in its single display. ([see here](#))

You can export the list to MS-Excel by clicking the appropriate button below the table.

You can close the list view with a click on the **<Back to hierarchy overview>** button and you will be back in the hierarchy view again.

PNC	Item group	Product code	Product name	Last price	Qty	PU	Price	Status	Delivery time
204	Rail managed	942104001	GECKO 4TX	296.79	1	ST	N	10 working days	
204	Rail managed	942104002	GECKO 5TX	227.54	1	ST	J	on demand	
204	Rail managed	942104003	GECKO 6TX	134.03	1	ST	N	10 working days	
204	Rail managed	942104004	GECKO 7TX	441.58	1	ST	N	10 working days	
204	Rail managed	942104005	GECKO 8TX	520.54	1	ST	N	10 working days	
204	Rail managed	942104006	GECKO 9TX	994.97	1	ST	N	10 working days	
204	Rail managed	942104007	GECKO 10TX	820.81	1	ST	N	10 working days	
204	Rail managed	942104008	GECKO 11TX	221.31	1	ST	N	10 working days	
204	Rail managed	942104009	GECKO 12TX	247.28	1	ST	N	10 working days	
204	Rail managed	942104010	GECKO 13TX	484.15	1	ST	N	10 working days	
204	Rail managed	942104011	GECKO 14TX	1886.04	1	ST	N	10 working days	
204	Rail managed	942104012	GECKO 15TX	370.92	1	ST	N	10 working days	
204	Rail managed	942104013	GECKO 16TX	752.24	1	ST	N	10 working days	
204	Rail managed	942104014	GECKO 17TX	892.62	1	ST	N	10 working days	
204	Rail managed	942104015	GECKO 18TX	628.60	1	ST	N	10 working days	
204	Rail managed	942104016	GECKO 19TX	520.54	1	ST	N	10 working days	
204	Rail managed	942104017	GECKO 20TX	647.55	1	ST	N	10 working days	
204	Rail managed	942104018	GECKO 21TX	1016.14	1	ST	N	10 working days	
204	Rail managed	942104019	GECKO 22TX	520.54	1	ST	N	10 working days	
204	Rail managed	942104020	GECKO 23TX	983.93	1	ST	N	10 working days	
204	Rail managed	942104021	GECKO 24TX	1099.91	1	ST	N	10 working days	
204	Rail managed	942104022	GECKO 25TX	1478.03	1	ST	N	10 working days	
204	Rail managed	942104023	GECKO 26TX	820.81	1	ST	N	10 working days	
204	Rail managed	942104024	GECKO 27TX	1747.60	1	ST	N	10 working days	
204	Rail managed	942104025	GECKO 28TX	715.87	1	ST	N	10 working days	
204	Rail managed	942104026	GECKO 29TX	273.26	1	ST	N	10 working days	
204	Rail managed	942104027	GECKO 30TX	484.05	1	ST	N	10 working days	
204	Rail managed	942104028	GECKO 31TX	621.32	1	ST	N	10 working days	
204	Rail managed	942104029	GECKO 32TX	1288.75	1	ST	N	10 working days	
204	Rail managed	942104030	GECKO 33TX	737.69	1	ST	N	10 working days	
204	Rail managed	942104031	GECKO 34TX	842.63	1	ST	N	10 working days	
204	Rail managed	942104032	GECKO 35TX	1870.20	1	ST	N	10 working days	
204	Rail managed	942104033	GECKO 36TX	1316.41	1	ST	N	10 working days	
204	Rail managed	942104034	GECKO 37TX	1421.25	1	ST	N	10 working days	
204	Rail managed	942104035	GECKO 38TX	1053.95	1	ST	N	10 working days	
204	Rail managed	942104036	GECKO 39TX	1158.49	1	ST	N	4 weeks	
204	Rail managed	942104037	GECKO 40TX	1932.27	1	ST	N	10 working days	

i Each product group always also contains all products and configurators of all its subordinate groups. So, if you click the top node **"All products"** of the hierarchy tree you will see one group only in the middle and a click on the **<Glasses>** button in this group then will display all products of course. The **<Magic wand>** button reacts in the same way which then offers all configurators in a new window.

You will find several buttons below the hierarchy tree to expand or collapse either all entries or the currently selected entry of the hierarchy tree only. There also is a button to maximise this window to your screen size.

At the right side of the window you will find these buttons:

- <Price list>** Opens a product list which can be filtered extensively and from which you can open any product with a double click to show it in a single product window. ([see here](#))
- <Hardware>** Opens a search dialog for hardware. ([see here](#) & [here](#))
- <Services>** Opens a search dialog for services ([see here](#) & [here](#))
- <Show all configurators>** Opens a window with all product series which can be freely configured ([see here](#))
- <Tools>** Opens a window to verify configuration codes. ([see here](#))
- <Log book>** Opens a list where you can query all price changes. ([see here](#))
- <Other lists>** Opens a list where you can find other useful data for the products. ([see here](#))
- <Manual>** Opens this manual from the Hirschmann website.

Application manual: Preis Information Industrial Automation Solutions (IAS)

Entering and editing customer data

This dialog is used for the maintenance of your customer data.

1. Organisation data

Please enter your organisation data in the left table. All fields must be filled in.

If your currency is not Euros then you can type in your currency and set an exchange rate factor accordingly.

When you also enter your email address in the organisation data (1) you will be able to use the [shopping cart features](#).

Your data is used only to reply on your feedback or inquiry mail.

The mails which are created by the application will be forwarded to the standard email program of your computer, but they are not sent automatically.

You can modify the mail to your needs beforehand.

If you do not enter your email address data at this point you can use the application anyway but the [shopping cart feature](#) then cannot be used.

The "**Language**" combo box allows you to change the display language of the program. Please restart the program to activate the language selection.

The "**Product Focus**" combo box allows you to specify your product focus. The program then immediately displays products of your focus only in the price list window. You can change or remove this "pre filter" at any time. Simply double click the combo box to remove the setting.

The check boxes (bottom left)

The first "**check box**" controls whether you would like to use the old overview instead of the new product tree view. With the next start the application then shows the old overview as it was available until the application version 1.6.5 RC2 [20180305].

However, it is recommended to use the new tree view as for future versions the old overview possibly might no more be available.

The second "**check box**" only is available if the new tree view is checked. It controls whether the new tree view should be displayed immediately after the main window when the application starts. This saves you at least one click on the big red start button in the main window... :-)

The third "**check box**" either defines a "CrLf" (new line) or a semi colon (;) as delimiter character for the clipboard function of all configurators.

The <**Update**> button opens the manual database update check dialog. ([see here](#))

Application manual: Preis Information Industrial Automation Solutions (IAS)

Entering and editing customer data

2. Discounts

You can store your eventually given INET discount in the right table.

Select a discount group from the combo box and enter your discount in the field right next to it.

This must be a number between 1 and 99 without the percentage sign !

Then click the green **<+>** button to add the discount to the discount list.

You can change your discount at any time. Please proceed as follows:

- Double click the entry in the discount list which you want to change.
- Change the discount value in the field right next to the combo (number btw, 1 & 99 without %).
- Click the **<Save>** button below the combo box.

You can cancel the discount editing at any time by clicking on the **<Revert>** button.

Delete an entry from the discount list by selecting it with one click and then click the **<Delete>** button below the discount list.



3. Privacy Policy

The privacy policy (3) is explained in this window and you have to agree to it by checking the check box below when you want to make use of the [shopping cart feature](#). Please also check that you have registered your email address in this case.

4. Save & Exit

Save your data with a click on the **<Save>** button.

The program will check your input and complains if necessary.

If the input is valid the window will be closed automatically.

You can also close this window without saving by simply clicking the **<Exit>** button.



Application manual: Preis Information Industrial Automation Solutions (IAS)

Shopping cart function

The shopping cart is an option of the application to store products, configurations and solutions, which you then can email to request for more information or to request a quote from your BELDEN sales representative.

In order to use the shopping cart, you must have given your consent to the privacy policy (3) in the user data and you must have entered your email address.

Only if both conditions are met, the shopping cart button appears in this window and also all other windows of the application.

In every product window of the application you then will see additionally these two buttons.



The 'Customer data' window is divided into several sections:

- 1. Organisation data:** Fields for Organisation (Hirschmann), Forename (Heinz), Surname (Naleppa), E-Mail (heinz.naleppa@belden.com), Country (BR), ZIP (123), City (Test), Street (Test), Alt. currency (EUR), Exchange rate (1.00000), Language (English), and Product Focus.
- 2. Discounts:** A table with columns 'Group/Gruppe' and 'Value/...'. It shows a discount for 'NET - All products / Alle' at 25.00%.
- 3. Privacy Policy:** A section with text about data processing and a checkbox to 'Click here to accept the privacy policy'.
- 4. Save & Exit:** A button to 'Save with acceptance of the privacy policy' and an 'Exit' button.

 There are also checkboxes for 'Use the tree overview instead of the classic overview' and 'Automatically open the tree overview when the application starts'.

In order to add an article, a configured product or a complete solution to the shopping cart, click on the appropriate **<Add to cart>** button (*white shopping cart symbol*) in the respective windows of the products.

For individual products or configured products, you will be prompted to enter a quantity. In the case of complete solutions, the quantities of products required for a complete solution are automatically set.

You can have the shopping cart displayed at any time by clicking on the **<Show Cart>** button (*blue shopping cart symbol*).

You can also access the shopping cart directly via the user data window.

At the top left there are three buttons to control the display of the list of shopping cart items:

The 'Shopping cart' window displays a table of items with the following columns: ID, WISH_DATE, TID, PRODUCT_CODE, PRODUCT_NAME, QUANTITY, MEASURE, PRICE_LIST, DISCOUNT, PRICE_NET, PRICE_TOTAL, CURRENCY, SEND_DATE, and NOTE. The table contains several rows of data, including items from Hirschmann and Tofino Security.

Below the table, there are input fields for ID, TID, Product number, Currency, Measure, and Quantity, along with buttons for 'Create date', 'Request date', and 'Note'. There are also buttons for 'Clear cart', 'Copy to clipboard', 'Export as CSV file', and 'Create cart request mail'.

- **Show open entries only** Displays only the items that you have not yet sent by e-mail (*The column "SEND_DATE" is empty*)
- **Show closed entries only** Displays only the items that you have already sent by e-mail (*The column "SEND_DATE" is filled with a date value*)
- **Show all cart entries** Shows all items

Application manual: Preis Information Industrial Automation Solutions (IAS)

Shopping cart function

If you send the contents of the shopping cart by mail, The column "SEND_DATE" will be filled with the current date for all items, which means that these items will no longer be considered "open".

If you want to mark an item as "open" again, click once on the corresponding line in the list and you can then reset the request date (SEND_DATE) in the editor under the list by clicking on the red <X> button on the right.

ID	WISH_DATE	TID	PRODUCT_CODE	PRODUCT_NAME	QUA	ME	PRICE_LIST	DISCOUNT	PRICE_NET	PRICE_TOTAL	CUR	SEND_DATE	NOTE
12	24.07.2019	2	942099001	EESK_Evalboard	2.00	ST	635.87	40.00%	381.52	763.04	EUR		Test 123
11	12.07.2019	2	942077999	MSM20-G2G2G2G2S2Z9HH9E99 9.99	3.00	ST	15.512.92	40.00%	9.307.75	27.923.25	EUR		MICE Switch & M...
10	12.07.2019	2	942076998	MSP30-240485CZ999H9E2A00X.XX	1.00	ST	2.682.30	40.00%	1.609.38	1.609.38	EUR		MICE Switch & M...
9	12.07.2019	2	942077999	MSM60-Q6Q69999S2Z9HH9E99 9.99	2.00	ST	964.72	40.00%	578.83	1.157.66	EUR		MICE Switch & M...
8	12.07.2019	2	942077999	MSM40-T1T1T1T1S2Z9HH9E99 9.99	2.00	ST	268.40	40.00%	161.04	322.08	EUR		MICE Switch & M...
7	12.07.2019	2	943099999	MS20-2SAH9	1.00	ST	141.49	40.00%	84.89	84.89	EUR		
6	12.07.2019	2	942439999	MS20-1608TAZEHR00X.X	1.00	ST	1.500.54	40.00%	900.32	900.32	EUR		
5	10.07.2019	2	942103999	TofinoX6-6200T1T1S0G290003TAT...	1.00	ST	1.059.78	40.00%	635.87	635.87	EUR		
4	10.07.2019	2	942103999	EagleOne-0200T1M2TDG290000HHE...	1.00	ST	1.202.86	40.00%	721.72	721.72	EUR		
3	10.07.2019	2	942122999	GRM20-ZZZZTTTTTEVTHHS	1.00	ST	566.98	40.00%	340.19	340.19	EUR		GREYHOUND S...
2	10.07.2019	2	942123999	GRS1130-8T8ZEMMVTHHSE2S0X.X	1.00	ST	3.391.31	40.00%	2.034.79	2.034.79	EUR		GREYHOUND S...
1	10.07.2019	2	942058999	EAGLE30-0402208TTH9ZSC29HS...	1.00	ST	2.348.49	40.00%	1.409.09	1.409.09	EUR		

On the other hand, you can also set the request date (SEND_DATE) for an item by clicking on the green <V> button to the right, so that this item is NOT to be requested and thus marked as completed.

You can also change the quantity or the discount or enter a note in the editor later. For complete configuration solutions, the note always includes its name, so that it is also clear which items belong to it.

You can save the data of an item in the editor, or also delete or reset an item. Simply click on the corresponding buttons <Save>, <Delete> or <Reset>.

You can change the discount of all items in one action by clicking on the button with the <green arrow> above the column with the discounts. Enter the desired discount (a number between 1 and 99, without percentage sign!) in the command prompt and confirm the entry by clicking on the <OK> button or by pressing the ENTER key. You will immediately see that all items in the list now show the discount entered.

Double clicking a line opens the product in its associated price list window.

To the right of the editor you will find the following buttons:

- Clear cart This will delete the contents of the shopping cart completely
- Copy to Clipboard Copy the contents of the shopping cart to the clipboard for further use as a plain text block
- Export as CSV file This exports the contents of the shopping cart as a CSV file, for further use, for example. in MS-Excel or other similar programs
- Create cart request mail By clicking on this button, an email will be generated and automatically opened in your default email program

Application manual: Preis Information Industrial Automation Solutions (IAS)

Shopping cart function

The request mail only contains a prepared default text in which you can select the following options:

- You want to be contacted by the BELDEN sales representative who is responsible for you
- You want to get more information about the articles from product management
- You want to get more information about the articles from product management

The screenshot shows the 'Shopping cart' window with a table of items and a form for creating a request mail. The table has columns: ID, WISH_DATE, TID, PRODUCT_CODE, PRODUCT_NAME, QUA..., ME..., PRICE_LIST, DISCOUNT, PRICE_NET, PRICE_TOTAL, CUR..., SEND_DATE, and NOTE. The form below the table has fields for ID, TID, Product number, Currency, Measure, Quantity, Create date, Request date, Product name, List price (single), Discount, Net price (single), and Total price. There are also buttons for 'Clear cart', 'Copy to clipboard', 'Export as CSV file', and 'Create cart request mail'.

Of course you can also change or complete the text according to your needs.

Due to the security guidelines of most e-mail programs it is not possible to add data to this prepared e-mail.

Therefore the PL-application has automatically saved the shopping cart as a CSV file.

At the same time, it also opened the directory where this file <shoppingCart.csv> was saved. (This directory is usually located in your user directory in the subfolder <pricelist>.)

Now all you need to do is to "drag" this file from there into your message to attach it to the mail.

The advantage of this method is that this file can be easily processed by your BELDEN sales representative, because all relevant data for your request is included.

In addition, the PL application has also copied the shopping cart to the clipboard so that you can insert this text block alternatively into the mail text using the key combination CTRL-V.

All items in the shopping cart have now been given a date for the request date (SEND_DATE) so that they are no longer listed as open.



Even if you do not send the shopping cart by e-mail, the data will be retained when the program is exited and will remain available to you unchanged when you restart the application.

Application manual: Preis Information Industrial Automation Solutions (IAS)

Lists: Display price list

This dialog shows a list of all price list products.

All prices are displayed in either Euro (€) or US-Dollar (\$), depending on your country settings.

FILTER

The list can be extensively filtered with the criteria in the header.

Criteria which are available as text fields react directly to the ENTER key and filter the list immediately.

Criteria which are available as combo boxes need a click on the **<Find it!>** button after the selection.



A selected value in a combo box can be removed with just a double click on the combo box.

The **<->** buttons next to Product number, Product name, PMGrp (product main group), Product hierarchy number and Status are so-called tri-state buttons which successively display three different values when clicked. They influence how the list is sorted:

- no order
- ▲ ascending order
- ▼ descending order

All filter criteria can be removed with a click on the **<Reset>** button.



DISPLAY

You can open the product in the single price window by double clicking a row in the list or by highlighting a row with a click and then clicking the big button in the left hand bottom corner.



You can export the list as a delimited text file (csv) with a click on the **<Export as Ascii flat file>** button. The program generates a pdf file with a click on the **<PDF preview/print>** button.

FURTHER OPTIONS

With the top right button you can maximise the window to full screen or revert to the original size again.



CURRENT PRICE <> OLD PRICE

With release 2.0.0 RC1 [20231213], the old price of an item is also displayed in the last column on the far right of this list.

Due to the long lead time from the provision of the application to the actual effective date of the new prices, there were always questions about what the old price of a product was during this period, which sometimes can cover several months,

As additional information, the dates from which the new prices will be valid and until when the old prices will remain valid, are displayed at the bottom right of the window.

Application manual: **Preis Information Industrial Automation Solutions (IAS)**

Lists: Display log book

This dialog displays the price list log book.

TID	Artikelnummer	Bezeichnung	Listenpreis
2	943963202	SPIDER II Giga ST/2S EEC Jumbo	270,00 €
2	942051001	SPIDER STX PD EEC	138,00 €
2	943963102	SPIDER II Giga ST/2S EEC PRO	270,00 €
2	942051002	SPIDER 1TX/1FX-MM PD EEC	230,00 €
2	943962202	SPIDER II Giga ST EEC Jumbo	215,00 €
2	943962102	SPIDER II Giga ST EEC PRO	215,00 €
2	943994539	Accessories - Garantieverlängerung 1 Jahr	
2	942074001	ACA31	45,00 €
2	943994519	Accessories - HiComCenter Garantie 5 Jahre	
2	942051003	SPIDER 1TX/1FX-SM PD EEC	437,00 €

Below the buttons in the top right corner you can see the validation date of the current price list and directly below the date of the previous price list which is necessary for all output options except the first one.

You can select from these options:

- All log book entries
- New products since the previous price list
- Deleted products since the previous price list
- Rising prices since the previous price list
- Price reductions since the previous price list

Select an option in the top left options frame and then click the **<Load>** button.



You can export the list as a delimited text file (csv) with a click on the **<Export>** button.



With the top 2nd right button you can maximise the window to full screen or revert to the original size again.



Application manual: Preis Information Industrial Automation Solutions (IAS)

Lists: Display other lists.

This dialog displays other lists.

The button **<References>** loads a list of products into the table which basically are configurable items, but which are also having a so-called speaking short name and their own Hirschmann part number.

You can open any item to show more details with just a double click on its line in the table.

Other product data

Options:

☒ Preferences ☐ URLs (German)
☐ Weights ☐ URLs (English)
☐ Export data ☐ All in one

Currency: EUR

Load **Export**

Current price list is valid as of 01.07.2019

TID	Artikelnummer	Bezeichnung	SGE	VPE	Listenpreis	Vollständiger Product Code
2	942170001	BR520-4TX	NET	1.0	464.10 €	BR520-04009999-STCY99HHSESXX.XXX
2	942170011	BR520-4TX-EEC	NET	1.0	566.10 €	BR520-04009999-TTCY99HHSESXX.XXX
2	942170034	BR520-4TX-EEC-HL	NET	1.0	591.60 €	BR520-04009999-TTCX99HHSESXX.XXX
2	942170023	BR520-4TX-HL	NET	1.0	489.60 €	BR520-04009999-STCX99HHSESXX.XXX
2	942170003	BR520-4TX/2FX	NET	1.0	770.10 €	BR520-0600M2M2-STCY99HHSESXX.XXX
2	942170013	BR520-4TX/2FX-EEC	NET	1.0	872.10 €	BR520-0600M2M2-TTCY99HHSESXX.XXX
2	942170036	BR520-4TX/2FX-EEC-HL	NET	1.0	897.60 €	BR520-0600M2M2-TTCX99HHSESXX.XXX
2	942170025	BR520-4TX/2FX-HL	NET	1.0	795.60 €	BR520-0600M2M2-STCX99HHSESXX.XXX
2	942170005	BR520-4TX/2FX-SM	NET	1.0	1.025.10 €	BR520-0600S2S2-STCY99HHSESXX.XXX
2	942170015	BR520-4TX/2FX-SM-EEC	NET	1.0	1.127.10 €	BR520-0600S2S2-TTCY99HHSESXX.XXX
2	942170038	BR520-4TX/2FX-SM-EEC-HL	NET	1.0	1.152.60 €	BR520-0600S2S2-TTCX99HHSESXX.XXX
2	942170027	BR520-4TX/2FX-SM-HL	NET	1.0	1.050.60 €	BR520-0600S2S2-STCX99HHSESXX.XXX
2	942170040	BR520-4TX/2SFP-EEC-HL	NET	1.0	754.80 €	BR520-0600Z6Z6-TTCX99HHSESXX.XXX
2	942170029	BR520-4TX/2SFP-HL	NET	1.0	652.80 €	BR520-0600Z6Z6-STCX99HHSESXX.XXX
2	942170002	BR520-8TX	NET	1.0	780.30 €	BR520-08009999-STCY99HHSESXX.XXX
2	942170012	BR520-8TX-EEC	NET	1.0	852.30 €	BR520-08009999-TTCY99HHSESXX.XXX
2	942170035	BR520-8TX-EEC-HL	NET	1.0	907.80 €	BR520-08009999-TTCX99HHSESXX.XXX
2	942170024	BR520-8TX-HL	NET	1.0	805.80 €	BR520-08009999-STCX99HHSESXX.XXX
2	942170004	BR520-8TX/2FX	NET	1.0	1.086.30 €	BR520-1000M2M2-STCY99HHSESXX.XXX
2	942170014	BR520-8TX/2FX-EEC	NET	1.0	1.188.30 €	BR520-1000M2M2-TTCY99HHSESXX.XXX
2	942170037	BR520-8TX/2FX-EEC-HL	NET	1.0	1.213.80 €	BR520-1000M2M2-TTCX99HHSESXX.XXX
2	942170026	BR520-8TX/2FX-HL	NET	1.0	1.111.80 €	BR520-1000M2M2-STCX99HHSESXX.XXX
2	942170006	BR520-8TX/2FX-SM	NET	1.0	1.341.30 €	BR520-1000S2S2-STCY99HHSESXX.XXX
2	942170016	BR520-8TX/2FX-SM-EEC	NET	1.0	1.443.30 €	BR520-1000S2S2-TTCY99HHSESXX.XXX
2	942170039	BR520-8TX/2FX-SM-EEC-HL	NET	1.0	1.468.80 €	BR520-1000S2S2-TTCX99HHSESXX.XXX
2	942170028	BR520-8TX/2FX-SM-HL	NET	1.0	1.366.80 €	BR520-1000S2S2-STCX99HHSESXX.XXX
2	942170007	BR520-8TX/4SFP	NET	1.0	1.288.70 €	BR520-08040000-STCY99HHSESXX.XXX
2	942170017	BR520-8TX/4SFP-EEC	NET	1.0	1.310.70 €	BR520-08040000-TTCY99HHSESXX.XXX
2	942170041	BR520-8TX/4SFP-EEC-HL	NET	1.0	1.336.20 €	BR520-08040000-TTCX99HHSESXX.XXX
2	942170030	BR520-8TX/4SFP-HL	NET	1.0	1.234.20 €	BR520-08040000-STCX99HHSESXX.XXX
2	942170008	BR540-8TX	NET	1.0	1.147.50 €	BR540-00089999-STCY99HHSESXX.XXX
2	942170018	BR540-8TX-EEC	NET	1.0	1.249.50 €	BR540-00089999-TTCY99HHSESXX.XXX
2	942170042	BR540-8TX-EEC-HL	NET	1.0	1.275.00 €	BR540-00089999-TTCX99HHSESXX.XXX
2	942170031	BR540-8TX-HL	NET	1.0	1.173.00 €	BR540-00089999-STCX99HHSESXX.XXX
2	942170009	BR540-8TX/4SFP	NET	1.0	1.371.90 €	BR540-00120000-STCY99HHSESXX.XXX
2	942170019	BR540-8TX/4SFP-EEC	NET	1.0	1.473.90 €	BR540-00120000-TTCY99HHSESXX.XXX
2	942170043	BR540-8TX/4SFP-EEC-HL	NET	1.0	1.499.40 €	BR540-00120000-TTCX99HHSESXX.XXX
2	942170032	BR540-8TX/4SFP-HL	NET	1.0	1.397.40 €	BR540-00120000-STCX99HHSESXX.XXX
2	942170010	BR550-8TX/4SFP	NET	1.0	1.677.90 €	BR550-00122020-STCY99HHSESXX.XXX

You can select from these options:

- Preferences All products with preference zone, sign and date as well as supplier indicator
- Weights All products with gross and net weight and the weight measure
- Export data All products with country and region of origin, commodity code and EAN code number
- URLs (German) (Deep Link to the product in the eCatalog)
- URLs (English) (Deep Link to the product in the eCatalog)
- All in one All data together in one list

Select an option in the top left options frame and then click the **<Load>** button.



You can export the list as a delimited text file (csv) with a click on the **<Export>** button.



Application manual: Preis Information Industrial Automation Solutions (IAS)

Products: Single display (Hardware & Services)

This dialog can be opened with a click either on the **<Hardware>** or **<Service>** button in the main overview below the caption "Price list - Single products".

This is for example useful if you know the product number or name more precisely.

Simply enter a Hirschmann part number or only a part of it into the search field on top of the list.

You can also enter a product name or a part of it

Start searching by either pressing the ENTER key or by clicking the **<Finder>** button.

A product list which matches your search key will be displayed immediately.

TID	Prod.code	Prod.name	Price
2	942008001	SPIDER II 8TX PoE	350,00 €
2	942051001	SPIDER 5TX PD EEC	138,00 €
2	942051002	SPIDER 1TX/1FX-MM PD EEC	230,00 €
2	942051003	SPIDER 1TX/1FX-SM PD EEC	437,00 €
2	943221001	SPIDER 4TX/1FX	190,00 €
2	943221101	SPIDER 4TX/1FX EEC	210,00 €
2	943376001	SPIDER 8TX	140,00 €
2	943376201	SPIDER 8TX EEC	160,00 €
2	943824002	SPIDER 5TX	100,00 €
2	943824102	SPIDER 5TX EEC	120,00 €
2	943880001	SPIDER 4TX/1FX-SM EEC	390,00 €
2	943890001	SPIDER 1TX/1FX	180,00 €
2	943891001	SPIDER 1TX/1FX-SM	360,00 €
2	943899001	SPIDER 3TX-TAP	95,00 €
2	943914001	SPIDER 4TX/1FX-ST EEC	210,00 €
2	943927001	SPIDER 1TX/1FX EEC	200,00 €
2	943928001	SPIDER 1TX/1FX-SM EEC	380,00 €
2	943957001	SPIDER II 8TX	140,00 €
2	943958001	SPIDER II 8TX EEC	160,00 €

Hit counter: 31



The search key automatically is used with the so-called wildcards so that e.g. the input "Spider" will display all Spider products no matter what comes next after the key word "Spider".

Open a product in a single view either with a double click or by selecting it in the list and the clicking the button with the green checkmark symbol.



You will again see this dialog in the views for the single hardware or service products if start searching for another product from there. (see [here](#) and [here](#))

Application manual: Preis Information Industrial Automation Solutions (IAS)

Products: Hardware detail view

This dialog shows a single hardware product with all price list details.

It is divided into five blocks:

- Product data
- List price
- Services
- Customer data
- Actions
- Shopping cart

PRODUCT DATA

In this block you will find all important product data like product code, name, EAN code, delivery time etc.

The name has a yellow background and can be double clicked.

This will open a summary of the product data as a PDF file. In case the product is configurable the related configurator will be opened and the order code is expanded automatically.

LIST PRICE

Here you will find the list price of the product.

If you have set another currency in your personal settings you will also find the list price in this currency.

SERVICES

In this block you can select a service for the product. Usually the most common services is already pre-selected. A service either has an own fixed price or it has a percentage factor which is used for calculation via the list price of the hardware product. This e.g. is the case for all the warranty extensions. Also here the price is displayed additionally in a possibly given other currency.

CUSTOMER DATA

This block shows your partner price which was calculated based on the discount you have provided in your personal data. The two discount buttons can be used to calculate either the partner or the list price with additional discounts.

Click on the **<Discount partner price>** button and simply enter an additional discount for your partner price. The result of this calculation is displayed below the button.

Click on the **<Discount list price>** button and simply enter an additional discount for the list price. The result of this calculation is displayed below the button.

Click the buttons again to remove the additionally calculated prices from the display.

Also here the prices are displayed additionally in a possibly given other currency.

ACTIONS

You can search for another product by entering a product code or name or any part of it and then click the **<Finder>** button or simply hit the ENTER key.

The Quick Finder dialog opens with a hit list where you can select the desired product with a double click. It will be displayed immediately in this window.

Application manual: Preis Information Industrial Automation Solutions (IAS)

Products: Hardware detail view

SHOPPING CART

Add the product to your shopping cart or show the content of your shopping cart.

BUTTONS

The **<Log file>** button opens an overview of all price changes.

The **<PDF>** button generates a summary of the product as a PDF file.

The **<eCatalog>** button refers to the product page in the internet. This of course only is possible when you are online.

The **<Clipboard>** button copies some data to the clipboard for further use in another context.

The **<Camera>** button copies a screenshot to the clipboard.

The **<Printer>** and the **<Calculator>** buttons should be self explaining.



Price list hardware detail view

Price information
Single hardware product

Currency: EUR

Subject to change without notice
Valid as of: 01.03.2024

Product data				List price	
Product code	942058001	EAN-Code	4002044403751	List price	2.724,10 €
Product name	EAGLE30-4TX/SFP-EEC			Your currency	2.043,07 GBP
Last order and last delivery					
SBU	PHN3	Product main group	Security	Delivery time	10 working days
INET	220				
Discountgrp.	Status	Quantity	Packaging	Measure	
IH	N Current	1,00	1,00	ST	

Customer data				Actions	
Hirschmann				Heinz Naleppa	
DE	72654	Neckartenzlingen			
				Stuttgarter Strasse 45-51	
Discount	Partner price	minus 5.0 percent	minus 45.0 percent		
40%	1.634,46 €	1.552,74 €	1.498,26 €		
Your currency	1.225,85 GBP	1.164,55 GBP	1.123,69 GBP		

Services
Ind. Security & Firewall - 3 years war...
943994544
Ind. Security & Firewall - 3 years warranty extension
6,00% 163,45 €
Your Currency 122,58 GBP

Shopping cart
Add Show

Key for the status field:

- J >>>> = new product since the previous price list
- N <<<< = normal product
- L <<<< = expired product (please note the last order and the last delivery dates)

PRODUCT DATA (with reference to an alternative article or a successor)

If there is an alternative or a successor for an item, a message informs you of this and this display also appears in the header area of the of the article data. In addition, the old article is displayed in red and the successor in green.

Product data			Open the alternative or new product
Product code	Predecessor or Successor	EAN-Code	
943221001	942132007	4002044218126	

An alternative to the current product is defined by the product management and should simply offer you another option that could also be considered. A successor is also defined by the product management and the last order and delivery date are also displayed.

This option is used in particular for the older Platform IV articles, which can now gradually be replaced by new Platform V articles.

PRICE CHANGE INDICATOR



Next to the list price field, you will see a button with a red arrow pointing upwards or a green arrow pointing downwards. This is displayed for products, which, in comparison to the previous price list, now are more expensive or cheaper.

Click on the button and a pop-up window will open with detailed information on when the new price applies and until when the old price remains valid.

Price comparison: New price <- Old price

INET 942058001 EAGLE30-4TX/SFP-EEC

New price valid as of: 01.03.2024		Old price valid until: 29.02.2024	
List price	2.724,10 €	List price	2.476,45 €
Your currency	2.043,07 GBP	Your currency	1.857,34 GBP
Discount	40%	Discount	40%
Partner price	1.634,46 €	Partner price	1.485,87 €
Your currency	1.225,84 GBP	Your currency	1.114,4 GBP
Partner price minus 5.0	1.552,74 €	Partner price minus 5.0	1.411,58 €
Your currency	1.164,55 GBP	Your currency	1.058,68 GBP
List price minus 45.0 %	1.498,26 €	List price minus 45.0 %	1.362,05 €
Your currency	1.123,69 GBP	Your currency	1.021,54 GBP

Application manual: Preis Information Industrial Automation Solutions (IAS)

Products: Services detail view

This dialog shows a single service product with all price list details.

It is divided into five blocks:

- Product data
- Prices
- Scales
- Service Price Calculation
- Shopping cart
- Actions

PRODUCT DATA

In this block you will find all important product data like product code, name, EAN code, delivery time etc.

PRICES

Here you will find the list price and the partner price of the product. If you have set another currency in your personal settings you will also find the prices in this currency. For service products which are based on a percentage factor of a hardware product the price fields will show %% and the price must be calculated in the bottom left block "Service Price Calculation" by selecting a hardware product.

SCALES

Some service products imply a price scale. The scales are shown here and the first column always displays the quantity from which the scale price or percentage becomes effective.

Scales			
Quantity	Measure	List	Partner
1	Point	75,00	67,50
10	Points	700,00	630,00

SERVICE PRICE CALCULATION

This block only is visible when you have selected a service product which has a percentage instead of a fixed price. You have to select a hardware product from the list. The service price is calculated using the given percentage of the service and the list price of the selected hardware product. It will be displayed immediately right next to the list.

The partner factor indicates by how much the service price additionally will be reduced. (currently 0.9 as factor = 10 %)

Also here the prices are displayed additionally in a possibly given other currency.

SHOPPING CART

Add the product to your shopping cart or show the content of your shopping cart.

ACTIONS

You can search for another product by entering a product code or name or any part of it and then click the <Finder> button or simply click the ENTER key.



The Quick Finder dialog opens with a hit list where you can select the desired product with a double click. It will be displayed immediately in this window.

Application manual: Preis Information Industrial Automation Solutions (IAS)

Products: Services detail view

BUTTONS

The **<Log file>** button opens an overview of all price changes.

The **<PDF>** button generates a summary of the product as a PDF file.

The **<eCatalog>** button refers to the product page in the internet. This of course only is possible when you are online.

The **<Clipboard>** button copies some data to the clipboard for further use in another context.

The **<Camera>** button copies a screenshot to the clipboard.

The **<Printer>** and the **<Calculator>** buttons should be self explaining.

Key for the status field:

- J >>>>** = new product since the previous price list
- N <<<<** = normal product
- L <<<<** = expired product (please note the last order and the last delivery dates)

PRICE CHANGE INDICATOR

Next to the list price field, you will see a button with a red arrow pointing upwards or a green arrow pointing downwards. This is displayed for products, which, in comparison to the previous price list, now are more expensive or cheaper.

Click on the button and a pop-up window will open with detailed information on when the new price applies and until when the old price remains valid.

Application manual: Preis Information Industrial Automation Solutions (IAS)

Configurators: Similarities

The Price Information application configurators may initially appear to be different but they are very similar in structure and usage.

Basically there are always two options to check an order code:

Option 1

Assemble the desired product with the aid of the combo boxes or selection fields. Once you have filled in all mandatory fields click the **<Check Config !>** button.

If you start with the first parameter the options for many other parameters will be set automatically.

Option 2

Click the **<Input Config !>** button, enter a valid order code in the input field and then click the **<Explode Config !>** button once.

The **<Check Config !>** button checks your configuration and an advisory message reports possible errors.

Once all parameters have been set correctly, the order code and the Hirschmann order number appear. Right next to them you will also find some so-called actions buttons:



<Services>

For selection of guarantee extensions, installations, etc. (clicking the button once more will close the services again. [see also here](#))



<PDF>

Preview or print the configuration in clear words as a PDF document



<Screenshot>

Make a screen copy and copy it to the clipboard



<Specs>

Preview a simple text based description of the configuration in clear words



<Clipboard>

Copy order code, Hirschmann number and prices to the clipboard
A double click on the order code or the Hirschmann code copies this one to the clipboard only.



Depending on the layout the list price is displayed either to the left or top in the lower or the right part of the dialog. If the assembled configuration exists as a fixed Hirschmann order number you can open the article in the price list dialog with the spy glass symbol button.



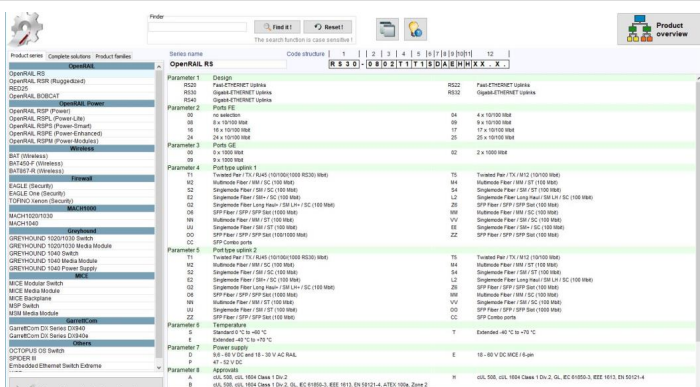
Save the current configuration as "your" configuration by clicking the **<Safe>** button right next to the **<My configurations>** button. With this button you can retrieve your configurations afterwards.



The **<eCatalog>** button refers to the product page in the internet. This of course only is possible when you are online.

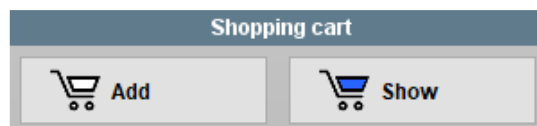
Shopping cart

Add the product to your shopping cart or show the content of your shopping cart. In a single configurator window only the current configured product is added while in a configuration solution window all products of the solution are added to the shopping cart.



Check Config !

Input Config !



Show

Application manual: Preis Information Industrial Automation Solutions (IAS)

Configurators: Similarities

In the customer data area you will find your price for the current configuration.

The two buttons

<**Rebate partner price**> and <**Rebate list price**>

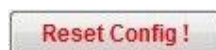
can be used to easily calculate additional discounts.

Clicking once more on the buttons removes the calculations results again.



*Please note that a renewed code check is necessary whenever the order code displayed in the centre or on top of the dialog is shown in RED !
This is the case for example when a parameter in an existing code is changed !*

Reset the dialog to the initial settings by clicking the <**Reset Config !**> button once.



You can reset single parameters in many configurators by simply double clicking the related combo box. By this other combo boxes will be updated and then might allow more selections. So you can change an already existing configuration without the need to reset the whole configurator.

Clicking the <**Services**> button displays a selection of services in the lower part of the dialog where normally your customer data is displayed. Usually the most common services is already pre-selected.



A service either has an own fixed price or it has a percentage factor which is used for calculation via the list price of the configured product. This is for example the case for all the warranty extensions.

Simply select any service with the combo box. The price will be calculated and displayed automatically. The partner factor indicates how much the price additionally will be reduced. (current factor = 0,9 = 10 %)



Please note that all buttons and many other components in this window provide a tool tip text which will be displayed as soon as you hover over them with the mouse cursor.

All Configurators show a button with a „reading glasses“ symbol.

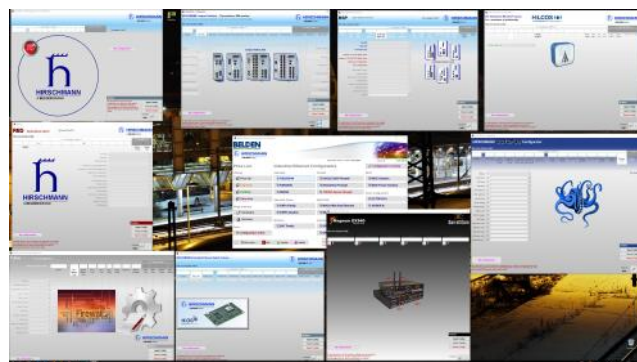
This button allows to open any other configurator from within a configurator window.

It can be used to easily compare different configurable products side by side on the screen.



It is also possible to open more than just two configurators at once, effectively there is no limit, provided the screen space is big enough. However, for more than two or three at once a 4K screen is required to really arrange the windows without overlapping or more than just one screen has to be connected to the computer.

The screenshot to the right shows this option on a 4K screen.



References to a follow-up article

If a successor is defined for a configuration of any product series, then after clicking the button <**Check Config !**>, a message informs you and a green <**NEW**> button appears next to the action buttons.



A successor is defined by the product management and the last order and delivery date are also displayed.

Application manual: Preis Information Industrial Automation Solutions (IAS)

Configurators: Similarities

References to a follow-up article

Price list



Attention:

The product you have configured has restrictions regarding order and delivery availability.

Last Order Date: 2023-12-31 - Last Delivery Date: 2024-06-30

However, there is a reference to possible successor products.

To view these, please click on the button with the "green arrow" in the configurator window.

Ok

This option is used in particular for the older Platform IV articles, which can now be gradually replaced by new platform V articles.

Click on the green < **NEW** > button and another window opens parallel to the current configurator window with one or more successor configurations.



Select a configuration here and note the text that is displayed at the bottom of the window after the selection.



Selection of successors

Here is a list of new products which are defined as successors to the variant which you have configured. Your old configuration currently is:

OpenRAIL RS

RS40-0009CCCCSDAEHHXX.X.

Select a row in the table and click on the EXPLODE button to open the order code of the successor product variant in its related configurator... a double click also works fine... :-)

Also take a look at the note which might be displayed below.

Product series	Configuration
OpenRAIL BOBCAT	BRS40-00120000-SFC??9HHSESXX.X.XX



Since the parameters for <Approvals / Declarations Part A> and for the <Software Level> cannot be converted 1:1 you have to select the desired values in the Bobcat configurator manually. So please ignore the warning messages when opening the Bobcat config



Explode !

Click on the < **Explode !** > button, or double-click on the entry in the list, and the window of the successor will open parallel to the current configurator window.



You can now arrange both configurator windows next to each other, so that you can easily compare the data of both products.

PRICE CHANGE INDICATOR

Next to the list price field, you will see a button with a red arrow pointing upwards or a green arrow pointing downwards. This is displayed for products, which, in comparison to the previous price list, now are more expensive or cheaper.



Click on the button and a pop-up window will open with detailed information on when the new price applies and until when the old price remains valid.

This option previously was not available in the application and has been implemented from version 2.0.0 RC1 [20231213].

Due to the long lead time from the provision of the application to the actual effective date of the new prices, there were always questions about what the old price of a product was during this period, which sometimes can cover several months,

Price comparison: New price <-> Old price

INET 942058001 EAGLE30-4TXSFP-EEC

New price valid as of: 01.03.2024		Old price valid until: 29.02.2024	
List price	2.724,10 €	List price	2.476,45 €
Your currency	2.043,07 GBP	Your currency	1.857,34 GBP
Discount	40%	Discount	40%
Partner price	1.634,46 €	Partner price	1.485,87 €
Your currency	1.225,84 GBP	Your currency	1.114,4 GBP
Partner price minus 5.0	1.552,74 €	Partner price minus 5.0	1.411,58 €
Your currency	1.164,55 GBP	Your currency	1.058,68 GBP
List price minus 45.0 %	1.498,26 €	List price minus 45.0 %	1.362,05 €
Your currency	1.123,69 GBP	Your currency	1.021,54 GBP

With this new function, this should no longer be a problem, even for freely configurable products.

Application manual: Preis Information Industrial Automation Solutions (IAS)

Configurators: Overview & Search

You will find all configurable product series in an overview by clicking the button **<Show all configurators>** at the right side of the application's product tree window (see page 5). This opens a window which displays all selectable parameters and components of all freely configurable product series in an overview.

Select a product series from the table on the left of the screen and the complete overview then appears on the right. You can copy the data displayed to the clipboard by clicking on the clipboard button at the top.

On the left of the screen you can also find product series which provide **complete solutions** or which can be opened via a **family overview**.

This overview also allows you to search for keywords.

Enter a search term in the FINDER at the top and confirm with the Enter key or click the search button. The table then only shows the product series found where the search term applies.

The parameters and components for those series where the search term applies are additionally highlighted in yellow.

You can double click on these components to open the configurator where the selected component then will be set automatically in the configurator and where all other parameter selections also will be restricted depending on this component selection.



You can also call this screen from any configurator by clicking the help button. The screen contains the correct pre-selection in the product series table when it opens.



You cannot switch to another series or use the search function whilst in this mode.

Application manual: Preis Information Industrial Automation Solutions (IAS)

Configurators: OpenRAIL (RS20, RS22, RS30, RS32, RS40)

This configurator uses standard combo boxes for the selection of the individual parameter values.



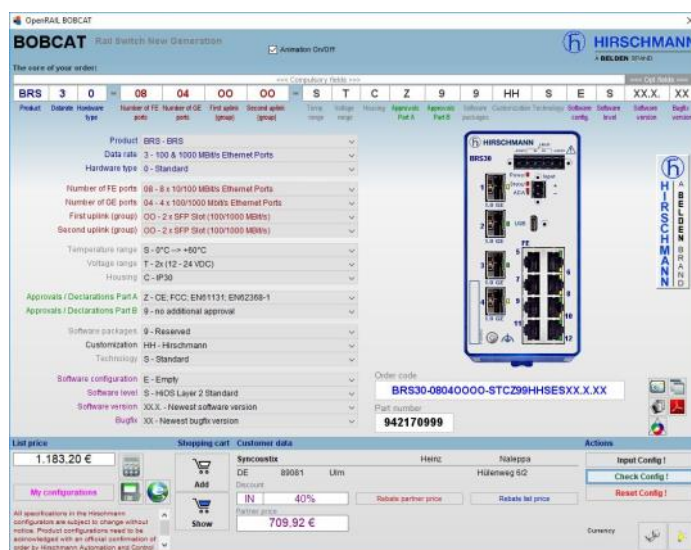
Configurators: BOBCAT (BRS20 >>> BRS56)

This configurator uses standard combo boxes for the selection of the individual parameter values.



You can turn the animations on or off simply by using the check box right next to or above the code elements.

The program reminds this setting and the next time you start it and use this configurator it automatically sets the animations to the last status.



Application manual: Preis Information Industrial Automation Solutions (IAS)

Configurators: OpenRAIL Power Family (RSP, RSPL & RSPS)

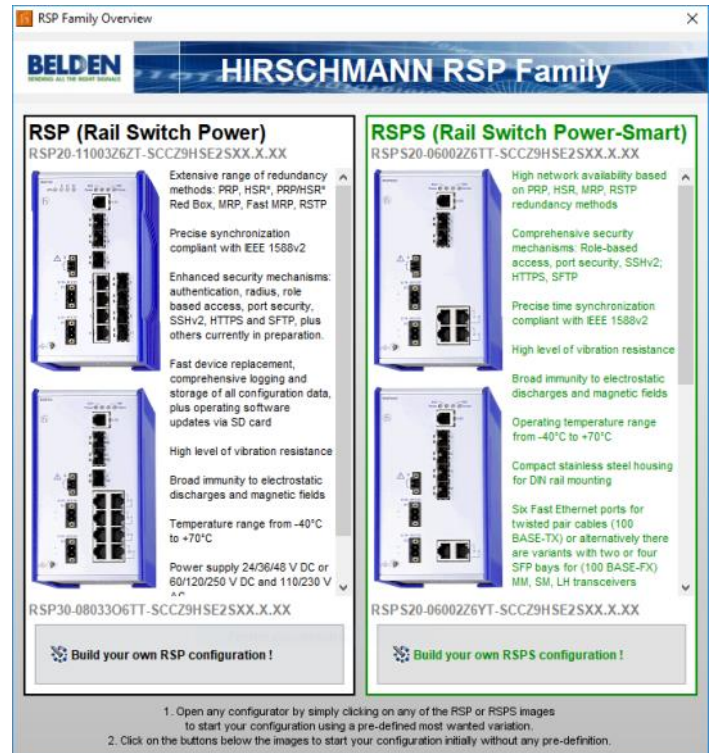
This product family contains three variants:

- **RSP** Rail Switch Power
- **RSPS** Rail Switch Power Smart

You can also open them via the related family window from the configurator overview window ([see here](#))

Open any configurator by simply clicking on any of the RSP or RSPS images to start your configuration using a pre-defined most wanted variation.

Click on the buttons below the images to start your configuration initially without any pre-definition.



The configurators of this family all use standard combo boxes for the selection of the individual parameter values.

(The screenshot to the right shows the RSP configurator as example)



The image of the switch will only be displayed after the selection of certain parameters

Product	Date	Rate	Hardw. type	10/100 Mbit/s ports	10/100/1000 Mbit/s ports	Uplink port configuration	Port configuration	Temp. range	Voltage range	App. rovals	Customization	Software cont.	Software level	Software version	Bugfix
RSP	3	0	08	03	306	TT	S	CC	Z9	HS	E	2S	XX.X.	XX	

Product: RSP - Rail Switch Power
Data rate: 3 - 10/100 Mbit/s & 10/100/1000 Mbit/s po...
Hardware type: 0 - Standard
Number of 10/100 Mbit/s ports: 08 - 8x 10/100 Mbit/s Ethernet ports
Number of 10/100/1000 Mbit/s ports: 03 - 3x 10/100/1000 Mbit/s Ethernet ports
Uplink port configuration: 306 - 3x SFP slot (1000 Mbit)
Port configuration: TT - All Twisted Pair / RJ45
Temperature range: S - Standard 0°C ... 60°C
Voltage range: CC - 2x 24/36/48 VDC (18 - 60VDC)
Approvals / Declarations: Z9 - CE, FCC, EN61131
Customization: HS - Standard
Software configuration: E - Enhanced encryption (>56 Bit, up to 2...
Software level: 2S - HIOS Layer 2 Standard
Software version: XX.X. - Latest software version
Bugfix: XX - Latest bug fix version

Order code: **RSP30-0803306TT-SCCZ9HSE2SXX.X.XX**
Part number: **942053999**

List price: **1.395,63 €**
Customer data: Syncoustix, Heinz Naleppa, DE 89081, Ulm, Hülenweg 6/2
Discount: **40%**
Rebate partner price: **837,38 €**

Shopping cart: Add, Show

Application manual: Preis Information Industrial Automation Solutions (IAS)

Configurators: BAT Wireless Family (BAT-R, BAT450-F, BAT867-R)

This product family contains three variants:

- **BAT-R** Wireless switch for use in robust outdoor applications as well as in hazardous areas
- **BAT450-F** Wireless access point for WWAN, LTE, Ethernet
- **BAT867-R** Wireless access point or client with up to 867 Mbps data transmission

You can also open them via the related family window from the configurator overview window ([see here](#))

Open any configurator by simply clicking on any of the BAT-R, BAT450-F or BAT867_R images to start your configuration using a pre-defined most wanted variation.

Click on the buttons below the images to start your configuration initially without any pre-definition.

The configurators of this family all use standard combo boxes for the selection of the individual parameter values.



You have to start with parameter no. 2. As soon as you have made a selection in any parameter many other parameters will be set with default values which mostly will fit your needs.



The image of the switch will only be displayed after the selection of certain parameters

Application manual: Preis Information Industrial Automation Solutions (IAS)

Configurators: BAT Wireless Family (BAT450-F, BAT867-R)

You have to start with parameter no. 2. also in the BAT450-F and BAT867-R configurator. As soon as you have made a selection in any parameter many other parameters will be set with default values which mostly will fit your needs.

Configurators: EAGLE Security Router (EAGLE20, EAGLE30, EAGLE40)

These configurators use standard combo boxes for the selection of the individual parameter values.

In the EAGLE20/30 configurator in the initial state you still can see a "fire" behind the "firewall". With each parameter you set the

firewall will be build higher and higher.

The final click onto the **< Check Config ! >** button closes the last hole in the wall with an image of an EAGLE20/30 switch.

The EAGLE40 configurator starts with a grey background colour.

This remains grey until you click the **<Check Config! >** button to verify the configuration and to calculate the price.

If everything is correct and the price could be calculated the background changes and is now blue.

As soon as you change any parameter, the background turns grey again until you click the aforementioned Check button again.

Application manual: Preis Information Industrial Automation Solutions (IAS)

Configurators: EAGLE One Security Router (EagleOne)

This configurator uses standard combo boxes for the selection of the individual parameter values.



Best choice is to start with parameter number one (product),

As soon as you have made a selection in parameter number one many other parameters will be set with default values which mostly will fit your needs.



You can reset single parameters by making a double click on the combo box. This sometimes is useful to avoid a complete reset of your current configuration if you have selected a parameter value which automatically influences other parameter values and then blocks the selection due to the product's component matrix.

Configurators: Tofino Xenon Security Appliance (TofinoXe)

This configurator basically is the same one as for the Eagle One Security Router.

As soon as you select either "EagleOne" or "TofinoXe" in the first parameter the colour of the background changes to blue or red and also the exemplary product image is changed.

The button **<Show Accessories>** displays a list of loadable software modules which are available for this product.

The list is displayed at the bottom of the window instead of your customer data.

You can double click the products in the list to open the single product window to show all information about the selected LSM.

Close the list again with another click on this button.

All other features are equal to the EagleOne configurator.

Application manual: Preis Information Industrial Automation Solutions (IAS)

Configurators:

MICE Switch (MS20, MS30), MICE Media Module (MM2, MM3) & MICE Backplane (MB20)

All the three configurators of the MICE family are using standard combo boxes for the selection of the individual parameter values.

All other functions are explained [here](#).



Please also remember that the 4 transceiver ports might be re-arranged automatically to ensure that the transceiver with the highest valence is placed in port no. 1 and the others are aligned by descending valence.

MICE Switch Configurator
HIRSCHMANN Modular Switches: 12 parameters, 1000 versions
The Hirschmann managed switch range for maximum individuality.

The core of your order:

MS30	16	02	S	A	Z	E	H	H	XX.X
------	----	----	---	---	---	---	---	---	------

Design: MS30 - Gigab...
Number of FE ports: 16 - 16 x 10/1...
Number of GE ports: 02 - 2 x 1000...
Temperature: S - Standard...
Power supply: A - 18 - 32 V...
Order code: MS30-1602SAZEHXX.X
Part number: 943435999

List price: 1,723.20 €
Customer price: 1,033.92 €

MICE Media Module Configurator
HIRSCHMANN Modular Switches
One platform, 1000 variations

The core of your order:

MM2	0	P9	P9	T1	T1	S	Z	H	H
-----	---	----	----	----	----	---	---	---	---

Module: MM2 - Fast EL...
Technology: T1 - Tw...
Port Type 1: T1 - Tw...
Port Type 2: T1 - Tw...
Port Type 3: T1 - Tw...
Port Type 4: T1 - Tw...
Temperature: S - Standard...
Approval: Z - CE...
OEM type: H - Optional...
OEM type: H - Optional...
Order code: MM20-P9P9T1T1SZH
Part number: 943938999

List price: 816.66 €
Customer price: 490.00 €

MICE Backplane Configurator
HIRSCHMANN Modular Switches
One platform, 1000 variations

The core of your order:

MB20	2	S	A	H	H
------	---	---	---	---	---

Module: MB20 - Fast Ethern...
Media module slots: 2 media module slots
Temperature: S - Standard 0 °C to +60 °C
Approval: A - CE, UL508, ISA 1...
OEM type: H - Optional custom...
OEM type: H - Optional custom...
Order code: MB20-2SAH
Part number: 943939999

List price: 141.49 €
Customer price: 84.89 €

Application manual: Preis Information Industrial Automation Solutions (IAS)

Configurators: MSP Switch (MICE Switch Power: MSP30, MSP32)

This new configurator makes use of a little bit different concepts of operations

You can either click the **up arrow** or **down arrow** symbols on each parameter selection box to select the single values of the current parameter step by step.

Alternatively you can click on the **<List>** button below the box to show all values at once in a list instead.

Simply select the value from the list which you want to set.

The list closes automatically again. You can also close the list with a click on the **X** in the right top corner.

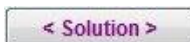


Use the right and left arrow symbols on the parameter selection boxes to toggle the display between parameters 1 to 7 respectively 7 to 13.



Please note that with a selection in parameter no. 7 (approvals) the toggle to the parameters 7 to 13 respectively to the parameters 1 to 7 is done automatically.

SOLUTION Option:



As soon as the order code is written in blue colour which indicates a successful code check you will find a green plus button and a red delete button below each slot below the product image.

You can use them to add media modules to the up to 7 slots of the MSP switch.

Click on a green plus button and the MICE media module power configurator opens where you can configure all media modules. If the MICE media module power configurator was opened from here then it also displays an additional button after you have made a successful code check which inserts the configured media module into the current MSP switch configuration.



The media module will be inserted into the slot for which you have clicked the green plus button.

Clicking the green plus button again respectively making a double click onto the image of the media module opens the MICE media module power configurator once again already exploding the current media module.

Remove a media module from a slot simply by clicking the red delete button.

If you need the same media module in other slots then you only need to configure it once in any slot you like. You then can simply drag and drop it to the other slots where you need it.

A click on the **<Solution>** button finally shows the complete MICE Power Switch solution which consists of at least one MSP switch and up to 7 MSM media modules. A new window opens which shows the order codes, the Hirschmann numbers and the prices of all parts as well as the total price of the solution.

Application manual: Preis Information Industrial Automation Solutions (IAS)

Configurators: MSP Switch (MICE Switch Power: MSP30, MSP32)



You can turn the animations on or off simply by using the check box right next to the code elements. The program reminds this setting and the next time you start it and use this configurator it automatically sets the animations to the last status.

Configurators: MSP Media Module (MICE Switch Power: MSM2, MSM4)

This configurator uses the same concept of operations as the MICE Switch Power Configurator (see page 30).

You can either click the **up arrow** or **down arrow** symbols on each parameter selection box to select the single values of the current parameter step by step.

Alternatively you can click on the **<List>** button below the box to show all values at once in a list instead.



Simply select the value from the list which you want to set.

The list closes automatically again. You can also close the list with a click on the **X** in the right top corner.



Please also remember that the 4 transceiver ports might be re-arranged automatically to ensure that the transceiver with the highest valence is placed in port no. 1 and the others are aligned by descending valence.

SOLUTION Option:

If the MICE media module power configurator was opened from the MICE switch power configurator then it also displays an additional button after you have made a successful code check which inserts the configured media module into the current MSP switch configuration.



A click on the **<Solution>** button in the MSP Switch Power configurator finally shows the complete solution, which consists of at least one MSP switch and up to 7 MSM media modules.

A new window opens which shows the order codes, the Hirschmann numbers and the prices of all parts as well as the total price of the solution.

Again, you will find the [shopping cart button](#), which adds the complete solution to the cart with just one click.

Application manual: Preis Information Industrial Automation Solutions (IAS)

Configurators: MACH1020/1030 (MAR1020,1022,1030,1032,1120,1122,1130,1132)

This configurator makes use of a little bit different concept of operations

You must start with parameter no. 1
< **Switch** >.

First click on the parameter buttons to the left and then select the desired component(s) from the parameter component selection list box.

For parameter no. 3
< **Ports FE 1-24 mod.** >
you can also select from the port type list in the right window area to fill in the module slots in the switch image simply by using drag & drop.

Additionally you also use the port list which only is available with parameter no. 3 < **Ports FE 1-24 mod.** >.
Here you can e.g. select all ports at once and fill them with the same type.

Please check the tool tip text which are available on all the screen elements to read more about their complete functionality.

The < **Check Config !** > button checks your configuration and an advisory message reports possible errors.
Once all parameters have been set correctly, the order code and the Hirschmann order number appear above the picture. Additionally the switch is "turned on" which is visualised by flashing LEDs.



Some variants have the option "ports on front or backside".
Use the < **Toggle** > button for the flip between front or backside view.



Application manual: Preis Information Industrial Automation Solutions (IAS)

Configurators: MACH1040 (MAR1040,1042,1140,1142)

This configurator makes use of a little bit different concept of operations

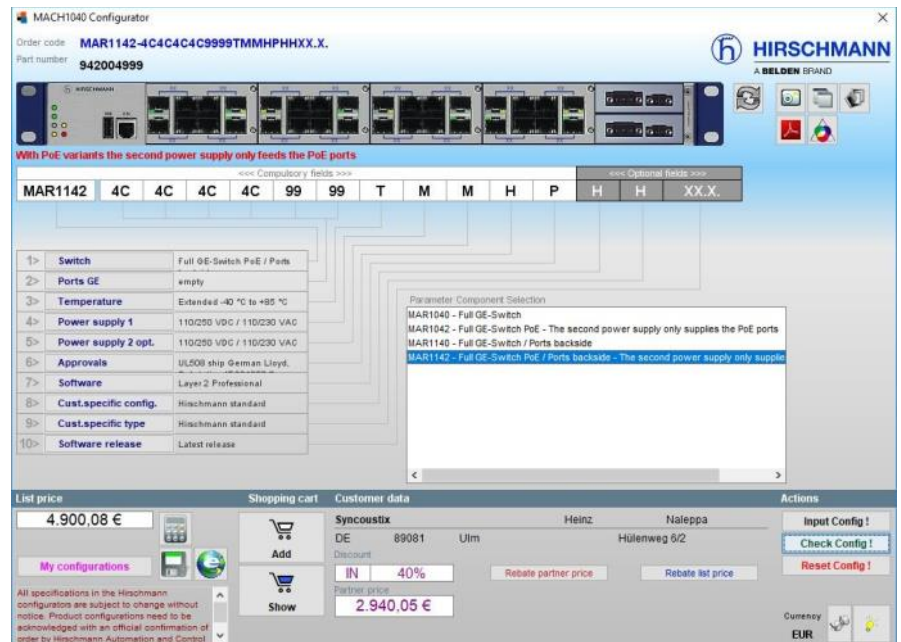
You must start with parameter no. 1 < **Switch** >.

First click on the parameter buttons to the left and then select the desired component(s) from the parameter component selection list box.

Additionally you also use the port list which only is available with parameter no. 2 < **Ports GE** >.

Here you can e.g. select all ports at once and fill them with the same type.

Please check the tool tip text which are available on all the screen elements to read more about their complete functionality.



The < **Check Config !** > button checks your configuration and an advisory message reports possible errors. Once all parameters have been set correctly, the order code and the Hirschmann order number appear above the picture. Additionally the switch is "turned on" which is visualised by flashing LEDs.



Some variants have the option "ports on front or backside". Use the < **Toggle** > button for the flip between front or backside view.



Application manual: Preis Information Industrial Automation Solutions (IAS)

Configurators: OpenRAIL Power Enhanced (RSPE)

This configurator uses standard combo boxes for the selection of the individual parameter values.



Best choice is to start with parameter number one (product),

As soon as you have made a selection in parameter number one many other parameters will be set with default values which mostly will fit your needs.



You can reset single parameters by making a double click on the combo box.

This sometimes is useful to avoid a complete reset of your current configuration if you have selected a parameter value which automatically influences other parameter values and then blocks the selection due to the product's component matrix.

SOLUTION Option:

[< Solution >](#)

As soon as the order code is written in blue colour which indicates a successful code check you will find a green plus button and a red delete button below the two slots below the product image.



You can use them to add media modules to the two slots of the RSPE switch.

Click on a green plus button and the RSPM media module configurator opens where you can configure all media modules. If the RSPE media module configurator was opened from here then it also displays an additional button after you have made a successful code check which inserts the configured media module into the current RSPE switch configuration.

The media module will be inserted into the slot for which you have clicked the green plus button. Clicking the green plus button again respectively making a double click onto the image of the media module opens the RSPM media module configurator once again already exploding the current media module. Remove a media module from a slot simply by clicking the red delete button.

If you need the same media module in both slots then you only need to configure it once in one slot. You then can simply drag and drop it to the other slot.



Please note that not all configurations of a media module can be mounted in the first (left) slot. The configurator will display a message box in such a case and allows you to alternatively mount the module in the second (right) slot.

A click on the **<Solution>** button finally shows the complete solution which consists of at least one RSPE switch and up to two media modules. A new window opens which shows the order codes, the Hirschmann numbers and the prices of all parts as well as the total price of the solution.



*Please close not used media module slots with the blank plate 942-131-001 RSPM-cover. You can click the **<RSPM-cover>** button to do this easily for the first, the second or both slots. Also in this case the **<Solution>** button finally will show the complete solution with the covers instead of media modules.*

Application manual: Preis Information Industrial Automation Solutions (IAS)

Configurators: OpenRAIL Power Enhanced (RSPE)



You can turn the animations on or off simply by using the related check box in the header. You also can turn the automatic filling of parameters on or off by using the related check box in the header. The program reminds this setting and the next time you start it and use this configurator it automatically sets the animations to the last status.

Configurators: OpenRAIL Power Enhanced Media Modules (RSPM)

This configurator uses the same concept of operations as the RSPE Switch Power Enhanced Configurator.

(see previous page)

SOLUTION Option:

If the RSPM media module configurator was opened from the RSPE switch power enhanced configurator then it also displays an additional button after you have made a successful code check which inserts the configured media module into the current RSPE switch configuration.

A click on the **<Solution>** button in the RSPE Switch configurator finally shows the complete solution which consists of at least one RSPE switch and up to two RSPM media modules.

A new window opens which shows the order codes, the Hirschmann numbers and the prices of all parts as well as the total price of the solution.

Again, you will find the [shopping cart button](#), which adds the complete solution to the cart with just one click.

Application manual: Preis Information Industrial Automation Solutions (IAS)

Configurators: GREYHOUND 1020/1030 Switch (GRS)

This configurator uses standard combo boxes for the selection of the individual parameter values.



Best choice is to start with parameter number one (product),

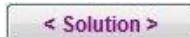
As soon as you have made a selection in parameter number one many other parameters will be set with default values which mostly will fit your needs.



You can reset single parameters by making a double click on the combo box.

This sometimes is useful to avoid a complete reset of your current configuration if you have selected a parameter value which automatically influences other parameter values and then blocks the selection due to the product's component matrix.

SOLUTION Option:



As soon as the order code is written in blue colour which indicates a successful code check you will find a green plus button and a red delete button below the media module slot below the product image.



You can use them to add one media module to the media module slot of the GREYHOUND switch.

Click on a green plus button and the GRM media module configurator opens where you can configure all media modules. If the GRM media module configurator was opened from here then it also displays an additional button after you have made a successful code check which inserts the configured media module into the current GREYHOUND switch configuration.

Clicking the green plus button again respectively making a double click onto the image of the media module opens the GRM media module configurator once again already exploding the current media module.

Remove the media module from the slot simply by clicking the red delete button.

A click on the **<Solution>** button finally shows the complete GRS/GRM solution which consists of at least one GREYHOUND switch and max. one GRM media module. A new window opens which shows the order codes, the Hirschmann numbers and the prices of all parts as well as the total price of the solution.



*Some variants have the option "ports on front or backside". Use the **<Toggle>** button for the flip between front or backside view.*



Application manual: Preis Information Industrial Automation Solutions (IAS)

Configurators: GREYHOUND 1020/1030 Media Modules (GRM)

This configurator uses the same concept of operations as the GREYHOUND Switch configurator.
([see previous page](#))

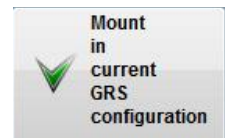


You can turn the automatic filling of parameters on or off by using the related check box in the header.

The program reminds this setting and the next time you start it and use this configurator it automatically sets the auto fill to the last status.

SOLUTION Option:

If the GRM media module configurator was opened from the GREYHOUND switch configurator then it also displays an additional button after you have made a successful code check which inserts the configured media module into the current GREYHOUND switch configuration.



A click on the **<Solution>** button in the GREYHOUND GRS Switch configurator finally shows the complete solution which consists of at least one GRS switch and up to two GRM media modules.

A new window opens which shows the order codes, the Hirschmann numbers and the prices of all parts as well as the total price of the solution.

Again, you will find the [shopping cart button](#), which adds the complete solution to the cart with just one click.

Application manual: Preis Information Industrial Automation Solutions (IAS)

Configurators: GREYHOUND 1040 Switch (GRS1040)

This configurator uses standard combo boxes for the selection of the individual parameter values.



Best choice is to start with parameter number one (product).

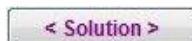
As soon as you have made a selection in parameter number one many other parameters will be set with default values which mostly will fit your needs.



You can reset single parameters by making a double click on the combo box.

This sometimes is useful to avoid a complete reset of your current configuration if you have selected a parameter value which automatically influences other parameter values and then blocks the selection due to the product's component matrix.

SOLUTION Option:



As soon as the order code is written in blue colour which indicates a successful code check you will find four green plus buttons and four red delete buttons below the product image.

You can use them to add two power supplies and two media modules to the power supply and media module slots of the GREYHOUND Full GE switch.

Click on a green plus button and the GSP power supply or the GMM media module configurator opens where you can configure all power supplies and media modules. If one of these configurators was opened from here then it also displays an additional button after you have made a successful code check which inserts the configured power supply or media module into the slot of the current GREYHOUND switch configuration which you have selected before.

Clicking a green plus button again respectively making a double click onto the images of the power supplies or media modules opens the appropriate configurator once again already exploding the current power supply or media module.

Remove a power supply or a media module from its slot simply by clicking the associated red delete button.



If you need the same power supply or media module in both slots then you only need to configure it once in any slot you like. You then can simply drag and drop it to the other slots where you need it.

A click on the **<Solution>** button finally shows the complete solution which consists of at least one GREYHOUND switch and up to two GPS power supplies and up to two GMM media modules. A new window opens which shows the order codes, the Hirschmann numbers and the prices of all parts as well as the total price of the solution.



*Some variants have the option "ports on front or backside". Use the **<Toggle>** button for the flip between front or backside view.*



Application manual: Preis Information Industrial Automation Solutions (IAS)

Configurators: GREYHOUND 1040 Media Module (GMM) GREYHOUND 1040 Power Supply (GPS)

These configurators are using the same concept of operations as the GREYHOUND Full GE Switch Configurator. ([see prev. page](#))



You can turn the automatic filling of parameters on or off by using the related check box in the header.

The program reminds this setting and the next time you start it and use this configurator it automatically sets the auto fill to the last status.

SOLUTION Option:



If one of the two configurator was opened from the GREYHOUND Full GE switch configurator then is also displays an additional button after you have made a successful code check which inserts the configured power supply or media module into the slot of the current GREYHOUND Full GE switch configuration which you have selected before.

A click on the **<Solution>** button finally shows the complete solution which consists of at least one GREYHOUND switch and up to two GPS power supplies and up to two GMM media modules.

A new window opens which shows the order codes, the Hirschmann numbers and the prices of all parts as well as the total price of the solution.

Again, you will find the [shopping cart button](#), which adds the complete solution to the cart with just one click.

Application manual: Preis Information Industrial Automation Solutions (IAS)

Configurators: GREYHOUND 105/106 Switch (GRS105/106)

This configurator uses standard combo boxes for the selection of the individual parameter values.

i Best choice is to start with parameter number one (product).

As soon as you have made a selection in parameter number one many other parameters will be set with default values which mostly will fit your needs.

i You can reset single parameters by making a double click on the combo box.

This sometimes is useful to avoid a complete reset of your current configuration if you have selected a parameter value which automatically influences other parameter values and then blocks the selection due to the product's component matrix.

GREYHOUND GRS 105/106 Switch

Order code: **GRS106-6F8F16TSGGZ9HHSE2S99XX.X.XX**

Part number: **942287999**

The core of your order:

GRS	1	0	6	-	6F	8F	16T	S	G	G	Z9	HH	S	E	2S	99	XX.X	XX
Product	Series	Tech- nology	Data rate		Port group I	Port group II	Port group III	Temp. range	Power supply 1	Power supply 2	Approvals & Declarations	Customer specification	Hardware config.	Software config.	Software level	Software packages	Software version	Maintenance version
GRS - Greyhound Switch	1 - Greyhound Serie 100	0 - Standard	6 - 6 x 1/2.5/10GE (PG I) + 8 x 1/2.5GE (P...		6F - 6 x SFP slots	8F - 8 x SFP slots	16T - 16 x TX ports	S - Standard -10 ... 60 °C										

List price on demand

Shopping cart Add Show

Customer data

Hirschmann	Heinz	Naleppa
DE 72654	Neckartenzlingen	Stuttgarter Strasse 45-51
Discount	40%	
Partner price	on demand	

Actions

Input Config !
Check Config !
Reset Config !

Currency: EUR

Application manual: Preis Information Industrial Automation Solutions (IAS)

Configurators: Embedded Ethernet Switch Extreme (EESX20, EESX30)

This configurator uses standard combo boxes for the selection of the individual parameter values.

All other functions are explained [here](#).

RED25 Redundancy Switch (RED25)

This configurator uses standard combo boxes for the selection of the individual parameter values.

All other functions are explained [here](#).

SPIDER III Entry Level Switch (SPIDER-SL, SPIDER-PL)

This configurator uses standard combo boxes for the selection of the individual parameter values.

All other functions are explained [here](#).

Application manual: Preis Information Industrial Automation Solutions (IAS)

Configurators: OCTOPUS II

This configurator uses standard combo boxes for the selection of the individual parameter values.

An animated display of the housing, the front plate and the bottom plate is additionally used to show the parameters as they are selected progressively.

The configurator displays the outer housing elements after parameter no.3 has been selected.

The configurator also displays the left and right side of the housing top plate with the appropriate ports and also the bottom plate with the appropriate port types if uplinks are selected after parameters 4, 5 and 6 have been selected.

The individual parts of the housing, plates etc. are displayed as an exploded drawing until the **<Check Config !>** button is pressed.

If all parameters have been selected the product is shown assembled (solid), i.e. the individual elements are finally shown without spaces. Assembly is also confirmed acoustically if the speakers on your computer are turned on.

If a parameter is changed the product is "exploded" again and the order code is shown in red.

*If an OCTOPUS II with GE ports is configured the bottom plate with the uplink ports and if relevant the power connector (depending on parameter 9) appears below the housing after the **<Check Config !>** button is clicked.*

The uplinks caps can be removed and replaced with the **<Uplink caps on/off>** button.

The screenshot function offers not only options for the entire screen, product etc. but also whether the front plate or just the bottom plate or both should be copied to the clipboard.

All other OCTOPUS II configurator functions are explained [here](#).



Application manual: Preis Information Industrial Automation Solutions (IAS)

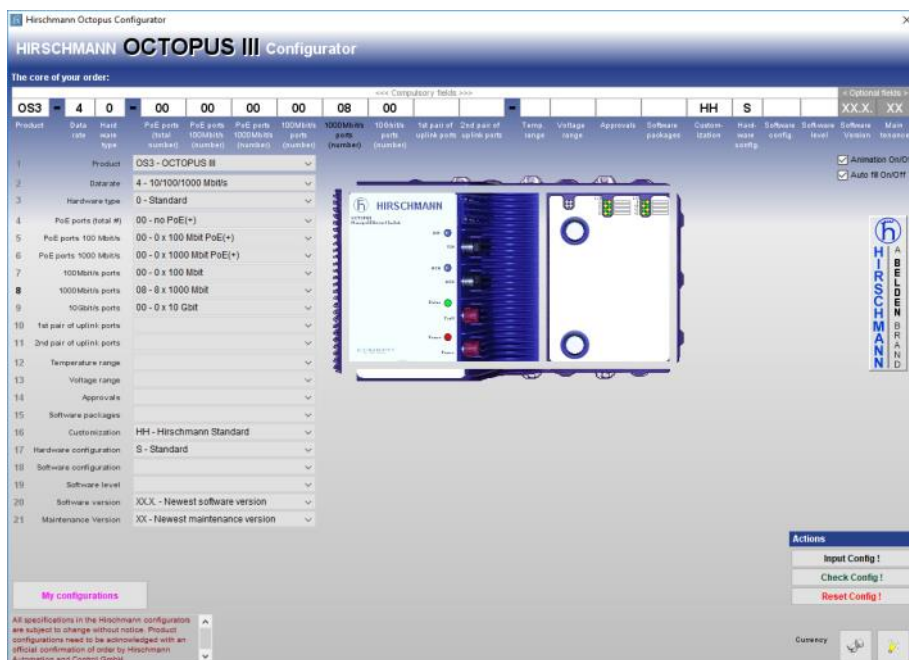
Configurators: OCTOPUS III

This configurator uses standard combo boxes for the selection of the individual parameter values.

An animated display of the housing, the front plate and the bottom plate is additionally used to show the parameters as they are selected progressively.

The configurator displays the outer housing elements after the parameter no. 4 to 9 have been selected.

This can be seen from the fact that the side parts and the body are still drawn with gaps.



The individual parts of the housing, plates etc. are displayed as an exploded drawing until the **<Check Config!>** button is pressed.

If all parameters have been selected the product is shown assembled (solid), i.e. the individual elements are finally shown without spaces.

Assembly is also confirmed acoustically if the speakers on your computer are turned on.

If a parameter is changed the product is "exploded" again and the order code is shown in red.

All port caps can be removed and replaced with the **<Caps on/off>** button.

The screenshot function offers not only options for the entire screen, product etc. but also whether the front plate or just the bottom plate or both should be copied to the clipboard.



All other OCTOPUS III configurator functions are explained [here](#).

Application manual: Preis Information Industrial Automation Solutions (IAS)

Configurators: MIPP Modular Industrial Patch Panel

This configurator has its own concept of operations.

The first parameter is already set to **MIPP** because here only this one selection is possible.

The same applies for the last parameter where **XX** currently is the only selection option.

You can make your selection for the six module parameters either by selecting an entry from the combo boxes or you might use the **<Module Builder>** button right next to the combo boxes.

It shows 4 lists in the right part of the window which represent the four sub parameters of one module.

Start your selection with the list at the bottom which is related to the first of the four sub parameters.

As soon as you have made your choice the other 3 lists will show valid values only which correspond to your selection in the first list.

Make your choice for the other 3 sub parameters now and then click the button with the blue arrow symbols to append the current module configuration into the current product configuration.

An animation (can be turned off) now shows you how and where the module will be installed in the housing. So you can see the product as it will come out of the box later.

Once a module is shown in the housing the "Module Builder" opens automatically as soon as the user clicks on the picture of the module and shows you the details of the module again.

To reset a module completely simply make a double click on it's combo box.



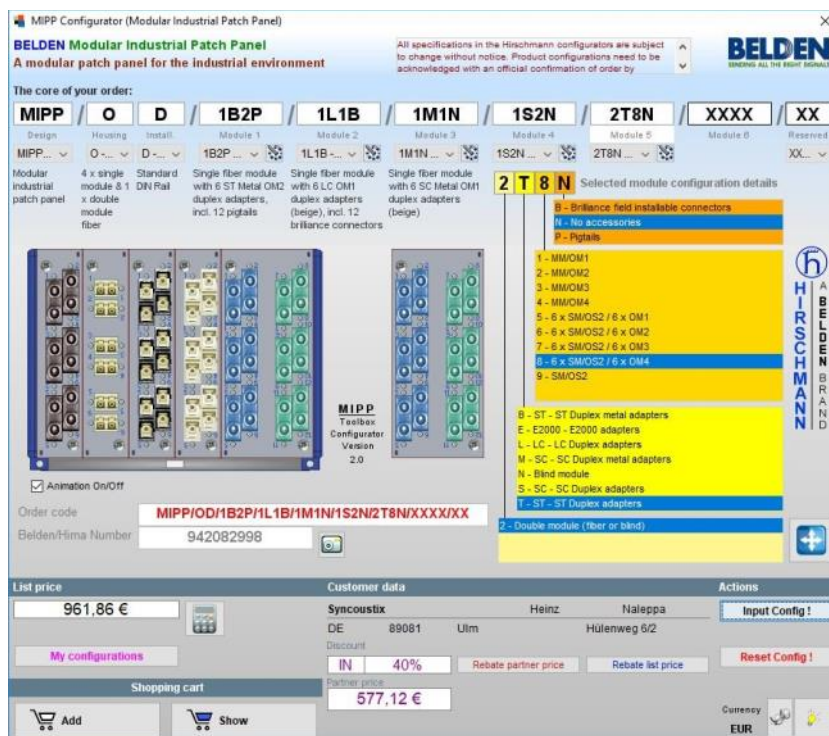
You can turn the animations on or off simply by using the check box right below the picture. The program reminds this setting and the next time you start it and use this configurator it automatically sets the animations to the last status.

It is also possible to drag modules via drag & drop from one module slot to another one.

Once you have selected a module for e.g. slot 1 and you need the same module in the slots 2 to 6, you can simply drag the image of the slot no. 1 and drop it on the module selection combo boxes no. 2 to no. 6 subsequently. The drop on the slot associated combo box is necessary as long as the module slot on which the drop is made still was not yet selected and therefore still is empty.

However, if e.g. all slot are already filled with modules and you want to switch the sequence of the modules you can drag and drop from one module image to any other module image directly. With the drop event the associated combo box is set to correct value and also the code elements and text fields are updated automatically.

As usual the configurator then requires to check the new configuration again with a simple click on the **<Check Config !>** button to update the price etc.



Application manual: Preis Information Industrial Automation Solutions (IAS)

Configurators: Tools - Configuration Check

This tool allows you to verify multiple order codes of the various freely configurable products series or standard products at once and to also enrich them with their list price.

Step 1: You can provide the order codes or products which should be verified in different ways:

A: As a list in an Excel file

Click the **“Step 1: Open Excel”** button. An Excel file opens and it has exactly two columns (A: Product code, B: Order code). Type in either a Hirschmann product code in column A or an order code of a freely configurable product in column B. Now just save the file in MS-Excel.

Then click the **“Step 2: Load Excel file”** button to continue.

The application now imports the data and displays it in the table.

B: As list via the clipboard

No matter from where you have copied product and/or order codes into the clipboard, as long as they are arranged in two columns and as rows flush in a sequence you can import this data with just a click on the “clipboard” button.

C: Single input

If you just have few individual product and/or order codes then first click on the button with the “green arrow down” symbol to make the buttons for step 2 visible.

Click on the button with the little green **<plus>** symbol. The application now creates a new line in the table in which you can type in an order code into the first column or a product code into the third column.

You can delete single lines or multiple marked lines from the table by clicking on the button with the little red **<minus>** symbol.



Clicking the button with the “green arrow down” symbol also allows you to skip step 1 if you want to import from the Excel file again without the need to create the template in step 1 again and again. By this you can change the template, add, remove or update the data of it and you do not need to create your source data again and again.

Product code	Order code
942058001	EagleOne-0200T1T1SDDUY0000HHEXX.X.XX
	BRS20-04009999-STCZ99HHSESXX.X.XX
	RS40-0009CCCCSDAEHXX.X
	GRS115-6F8T16TCMMY9HHSB3AURXX.X.XX

Order code orig.	Product name	Series name	Hima code	List price actual	Valid	Corrected	Order code corr.	List price old
EAGLE0-4T1GFP-EEC	EagleOne-0200T1T1SDDUY0000HHEXX.X.XX	Standard product	942058001	2,724.10	<input checked="" type="checkbox"/>	<input type="checkbox"/>		2,476.45
BRS20-04009999-STCZ99HHSESXX.X.XX	OpenPIL BRS20	Standard product	942103001	1,519.30	<input checked="" type="checkbox"/>	<input type="checkbox"/>		1,361.19
RS40-0009CCCCSDAEHXX.X	OpenPIL RS	OpenPIL RS	942170999	535.42	<input checked="" type="checkbox"/>	<input type="checkbox"/>		535.42
GRS115-6F8T16TCMMY9HHSB3AURXX.X.XX	OpenPIL RS	OpenPIL RS	943035999	2,715.65	<input checked="" type="checkbox"/>	<input type="checkbox"/>		2,715.65
	OpenPIL RS	OpenPIL RS	942287999	6,031.28	<input checked="" type="checkbox"/>	<input type="checkbox"/>		6,031.28

Application manual: **Preis Information Industrial Automation Solutions (IAS)**

Configurators: Tools - Configuration Check

Step 2: Check and enrich data

Click on the button **<Step 3: Check and find prices>** to execute the verification and the pricing.

The execution is visualised with two progress bars. Based on the number of records the execution can take up several minutes. As soon as the process has finished you will be prompted with a message box.

The result contains the following information for each product or order code:
the related series name, the Hirschmann product number, the list price and a check box to show whether the check was successful or not.

Order code orig. / Product name	Series name	Hima code	List price actual	Valid	Corrected	Order code corr.	List price old
EAGLE30-4TV/5FP-EEC	Standard product	942058001	2.724.10	<input checked="" type="checkbox"/>	<input type="checkbox"/>		2.476.45
EagleOne-0200T11SDUW0000+HEXX.XXX	Standard product	942103001	1.519.30	<input checked="" type="checkbox"/>	<input type="checkbox"/>		1.381.18
BR520-04009999-STC299+HSESXX.XXX	OperRAIL BOBCAT	942170999	533.42	<input checked="" type="checkbox"/>	<input type="checkbox"/>		533.42
RS40-0009CCCCDAEH+HXX.X	OperRAIL RS	943035999	2.715.65	<input checked="" type="checkbox"/>	<input type="checkbox"/>		2.715.65
GRS115-4PBT16TCHMY19+HGB3AUROXX.XXX	GREYHOUND 105...	942287999	6.031.28	<input checked="" type="checkbox"/>	<input type="checkbox"/>		6.031.28

Step 1: Open Excel
Step 2: Load Excel file
Step 3: Check & add price
Step 4: Export to an Excel file

Current prices valid as of: **01.03.2024**
Old prices valid until: **29.02.2024**

Records which could not be checked at all, because the product code or the order code structure could not be detected, are not marked. Product or order codes which could be checked but which are either invalid product or order codes are marked but they show "invalid code" in the series name column.

Order codes which could be checked successfully but which do not have the full code syntax are marked in the column "Corrected" and show the completed order code in the last column.

Standard product codes for which the check routine was able to find a price via the product code show the word "Standard product" in the column "series name".

The name of the standard products is completed in the first column if this column was empty when you have imported the data. If there was a wrong product name in the first column from the import it will not be changed but the correction marker will be set and the correct product name is shown in the last column.

Step 4: Export data

You can export the enriched list as Excel file finally.

Click on the button **<Step 4: Export as Excel file>** and type in a file name.

You can open this file later in MS-Excel again.

Clicking the **<Reset screen>** button clears the table and re-initialises the dialog.



Double clicking the list price of any record either opens the related configurator of an order code or the single price information window if there is a standard product in the selected record.

CURRENT PRICE <> OLD PRICE

With release 2.0.0 RC1 [20231213], the old price of an article is also displayed in the last column on the far right of this list, not only for products with their own fixed article number, but also for all freely configurable products!

Due to the long lead time from the provision of the application to the actual effective date of the new prices, there were always questions about what the old price of a product was during this period, which sometimes can cover several months,

As additional information, the dates from which the new prices will be valid and until when the old prices will remain valid, are displayed in the button area on the left side of the window.

Application manual: Preis Information Industrial Automation Solutions (IAS)

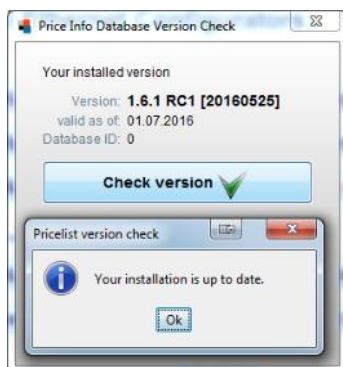
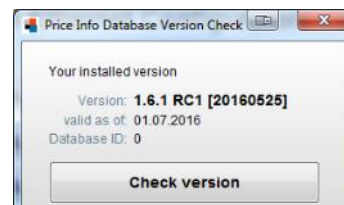
Version Check

A version check of the application is normally performed by the JAVA automatically on its own. However, this might not work well on each computer under all circumstances due to e.g. special settings of the firewall or your anti virus software.

That's why the application offers an own version check which can be launched from the main overview by clicking the **<Version>** button.

A dialog will be displayed looking like the screenshot to the right.

Click the **<Check version>** button.

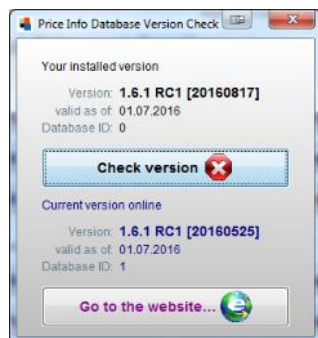
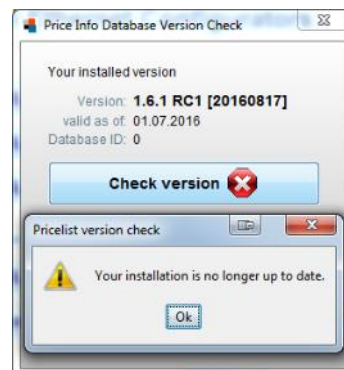


If your computer is connected with the Internet the application now fetches the actual version identifier from the BELDEN website. Best case is that your installed version is up to date which will be indicated by a message box.



The icon on the **<Check version>** button then will be changed to a green check mark.

If the version check detects that your installed version is no longer up to date you also will be prompted with an appropriate message box and the icon of the **<Check version>** button then will be changed to a red cross.



After the confirmation of the message box you will now see your installed version above the **<Check version>** button and below the button the actual version which is available online.

With a click on the **<Go to the website...>** button the application will be closed. Then you will be routed to the BELDEN website from where you can download the latest version right now. Your current installation will overwritten automatically.

If the version check should fail due to e.g. a missing internet connection you will be prompted with appropriate information messages.



The version check is also performed during the start up of the application in silent mode. It displays this dialog in case your installed version is out of date.



If you are not connected to the internet during the start up of the application then the version check routine will not show any error message in silent mode.

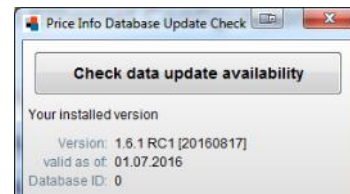


Application manual: Preis Information Industrial Automation Solutions (IAS)

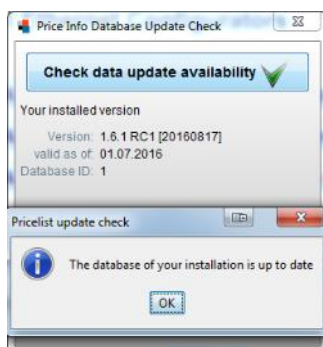
Update check of the internal database

The application uses a so-called “embedded” database which can be updated independent of the application itself. Therefore it is no more necessary to install a complete new version for just content based updates and the application can be held actual in shorter intervals.

Execute the database update check by clicking the **<Update>** button on the main screen. A dialog will be displayed looking like the screenshot to the right. The most important value is the number in the field “Database ID”. Click the **<Check data update availability>** button.

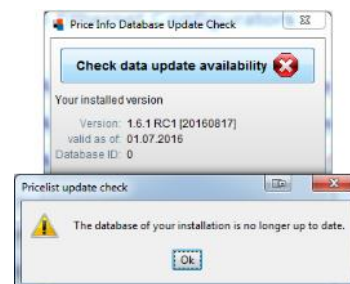


If your computer is connected with the Internet the application now fetches the actual database ID from the BELDEN website. Best case is that the database of your installed version is up to date which will be indicated by a message box.



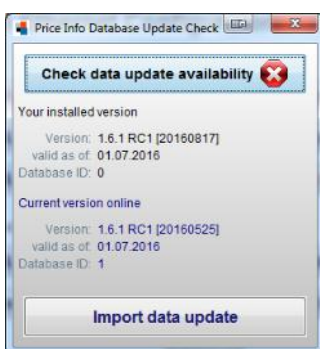
The icon on the **<Check data update availability>** button will then be changed to a green check mark.

If the update check detects that the database ID is no longer up to date you also will be prompted with an appropriate message box and the icon of the **<Check data update availability>** button will be changed to a red cross.



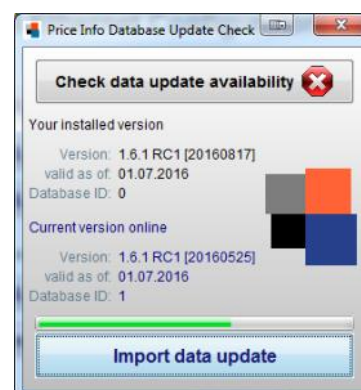
After the confirmation of the message box you will now see the database ID of your installed version below the **<Check data update availability>** button and below this one you will see the actual ID which is available online.

Clicking the **<Import data update>** button will start the import of the new data into the embedded database.



The import process is visualised by a progress bar and shows a dialog at the end after a successful data import.

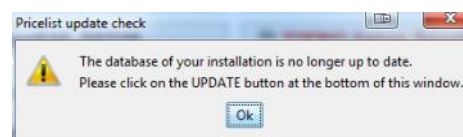
If the import should fail due to e.g. a missing internet connection you will be prompted with appropriate information messages.



The database update check routine is also performed during the start up of the application in silent mode. It displays this dialog in case your installed database is out of date.



If you are not connected to the internet during the start up of the application then the database update check routine will not show any error message in silent mode.



Application manual: **Preis Information Industrial Automation Solutions (IAS)**

Uninstall

Uninstalling the application:

- Open "Program and functions" from the Windows control panel.
- Select "BELDEN Industrial Automation Solutions (IAS) Price Info App" from the list and click "Deinstallation".
- Finally delete the folder "pricelist" which you will find in your Windows user data folder. This folder was used to save your user settings.



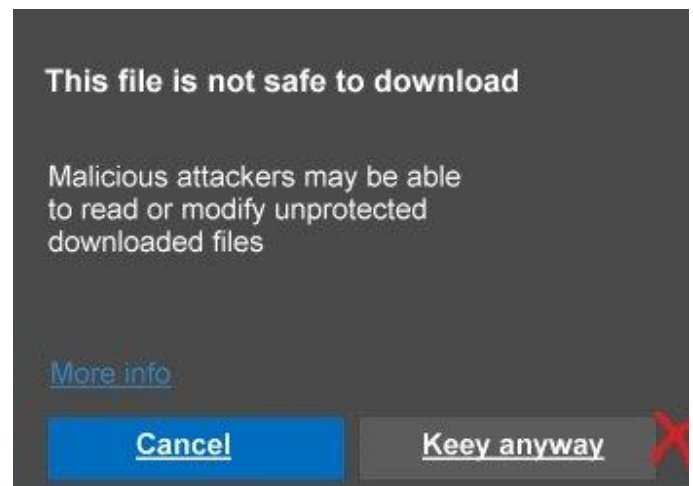
Application manual: **Preis Information Industrial Automation Solutions (IAS)**

F.A.Q.:

The download of the application is blocked in the browser

Depending on the browser and the security settings of the browser, it may happen that the download of the application is blocked by the browser even though the application has a valid security certificate.

If the browser displays this dialog, please click on the three dots ... and select **"Keep"** from the menu. In the dialog that follows, click on the **"Keep anyway"** button.



If after the download the Microsoft Defender blocks the execution of the setup, the following dialog appears:

Click here on the underlined text **"More information"** and in the following dialog click on the **"Run anyway"** button.



Application manual: **Preis Information Industrial Automation Solutions (IAS)**

F.A.Q.

The application does not start

1. Advice (Windows only)

- Remove the application using the Windows control panel "Programs and functions"
- Download the setup file from the website and reinstall

2. Advice

- Try to launch the ActionDemo example from:
- <http://docs.oracle.com/javase/tutorial/JWS/samples/uiswing/ActionDemoProject/ActionDemo.jnlp>
- Java 7 is required.
- If the application does not start then there is a local system issue.
- In that case please contact your company IT support.

3. Advice

- Set Java to open the console.
- Start the application.
- Copy the console text into a mail and send it to: Heinz.Naleppa@belden.com
- If you don't know how to open the JAVA console please contact your company IT support.

4. Advice

If you need to run the application on another operating system than Windows, please contact Heinz.Naleppa@belden.com.

Application manual: **Preis Information Industrial Automation Solutions (IAS)**

F.A.Q.

The application does not start with JAVA version 8 update 25 or higher (only for Windows installations)

If you have JAVA 8 update 25 or higher installed on your computer the Price Info App might not start correctly.

An error message with a wording like this might appear:

"...could not find JAVA VM"

In this case, please contact your BELDEN sales representative who will contact the app developer to solve this problem.

The application is only displayed very small on very high-resolution screens
(only for Windows installations)

To solve this display problem, you can try to adjust the scaling of the application.

Quit the application before you continue.

Find the file "*PriceList.exe*" in the directory
C:\Program Files (x86)\Price Information Industrial Networking (INET)
and right-click on the file and select "*Properties*" from the context menu.

In the properties window, select the "*Compatibility*" tab.

Under the settings, check the box next to "*Override behaviour at high DPI scaling*"
and select the **System** under "*Scaling carried out by:*".

Confirm with OK and restart the application to check whether the display is now larger.

Application manual: **Preis Information Industrial Automation Solutions (IAS)**

F.A.Q.

An error message is displayed that the database is offline or corrupted.

This usually is caused by closing a laptop manually or if a workstation is falling into sleep mode automatically as long as the application is running.

When reopening the laptop or coming back from sleep mode the application is not able to connect to the database again and if you then quit the application the database remains locked.

Trying now to start the application again it fails with the message as mentioned above.

To solve this without having to reinstall the whole application simply open the task manager and kill the process "javaw.exe *32" or "javaw.exe *64"

This resolves the database lock and then a restart of the application usually is working well again.

If this does not resolve the problem you can try to delete these files in the folder „**pricelist**“:

- PLData.h2.db
- PLData.lock.db
- PLData.trace.db

You will find the folder “pricelist” in your Windows user data folder.
This forces the application to create the database anew.

If this does not help to fix the problem then delete the folder “pricelist” to also remove eventually damaged user data. You then have to type in your access code and user data with the next start of the application.