

NP 302

**KeyConnect™ Workstation
Outlet System**

Belden's KeyConnect Workstation Outlet System provides high density and flexibility to create high-performance work area outlets for copper, fiber and multimedia applications.



**Introducing the Belden®
KeyConnect Workstation
Outlet System of Faceplates,
Adapters, Boxes, Outlets,
Modules and Accessories**

The KeyConnect Workstation Outlet System is comprised of a wide range of faceplates, adapters, and boxes, combined with a complete line of KeyConnect UTP, coax and fiber modules. KeyConnect Modules also fit into KeyConnect and AngleFlex™ Patch Panels in the Data Center or Telecommunications Room, providing the added benefit of installation flexibility, uniform aesthetics and reduced inventory. The module's footprint also allows for high-density use in patch panels and outlets.

Versatility and Flexibility

Each modular component of the KeyConnect series seamlessly fits together to suit any data, voice, video or multimedia application; this includes UTP modules for all performance levels of data networking, coax modules for CCTV and high-definition video applications, multimode and single-mode optical modules for fiber-to-the-desk, and a variety of audio-video modules for multimedia applications.

KeyConnect Modules can be easily inserted and removed from any keystone-style opening, providing design flexibility, reduced installation time and the ability to reconfigure work area outlets for changing application needs, upgrades and retrofits. Modules are compact in size for optimum workstation outlet density and they fit into all KeyConnect Faceplates, Adapters and Boxes. KeyConnect Modules can also be used with Belden MediaFlex Outlets for mixing and matching with MediaFlex Multimedia Inserts.

Durability and Reliability

All Belden KeyConnect components are designed to provide maximum durability, protection and reliable performance. Faceplates, Adapters and Boxes feature a sturdy design for impact resistance, while a fire-retardant plastic with UV stabilizers protect against color degradation. Stainless Steel Faceplates are available for institutional applications and KeyConnect Boxes are equipped with port shutters to protect modules from dust and debris.

KeyConnect Modules ensure Belden's longstanding, reliable signal transmission performance, including 10GX® modules for 10 Gigabit UTP data transmission, LC duplex adapter modules for low-loss optical fiber performance, and high-quality ceramic sleeves for precise alignment and durability.

Aesthetics and Manageability

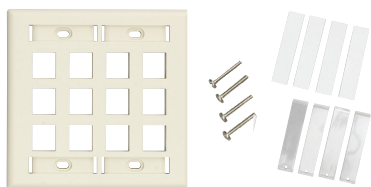
KeyConnect and MediaFlex Faceplates, Adapters, Boxes and Inserts are available in a variety of colors and styles to suit any office décor for a professional appearance. Built-in top and bottom labeling windows on Faceplates facilitate outlet identification and network management while more than 11 colors of KeyConnect Modular Jacks make it easy to color-code outlets for better manageability and aesthetics.

For more information about KeyConnect Workstation Outlet System, call 1.800.BELDEN or visit our Website at www.belden.com.

KeyConnect Faceplates



KeyConnect Single-gang, 2-Port Faceplate, Electrical White (AX102655)



KeyConnect Double-gang, 12-Port Faceplate, Almond (AX102256)



KeyConnect Single-gang Back Box, Electrical White (AX102657) and KeyConnect Double-gang Back Box, Almond (AX104130)



KeyConnect Stainless Steel Faceplates: Single-gang, 4-Port (AX102009) and Double-gang, 12-Port (AX102013)



KeyConnect Wall Mount Phone Plates: Stainless Steel (AX102005) and Electrical White (AX102902)

Compatible with all KeyConnect UTP and Multimedia Modules, KeyConnect Faceplates are designed for maximum flexibility, durability, aesthetics and manageability. They are available in a variety of styles, colors and port configurations to meet all work area outlet application needs, and they provide for easy outlet identification.

Features & Benefits

- KeyConnect Faceplates are compatible with all KeyConnect UTP and multimedia modules
- KeyConnect Faceplates are available in almond and electrical white to suit any office decor
 - Available in 1, 2, 4, 6-port single-gang and 12-port double-gang configurations for design flexibility
 - Fire-retardant plastic with UV stabilizer for protection against color degradation
 - Top and bottom labeling windows for easy outlet identification
 - Compatible with LabelFlex labeling solution
- KeyConnect Faceplates available in stainless steel finish for institutional applications
 - Available in 1, 2, 4, 6-port single-gang and 12-port double-gang configurations
- KeyConnect Faceplates available with mounting studs for wall-mount phone installation
 - Available in stainless steel and white plastic

KeyConnect Faceplates

Physical and Mechanical Characteristics

- Dimensions (H x W x D):
 - Single-gang: 114 x 70 x 6.6 mm (4.50 x 2.75 x 0.26 in.)
 - Double-gang: 114 x 117 x 6.6 mm (4.50 x 4.59 x 0.26 in.)
- Materials: Fire-retardant plastic UL94V-0

Packaging

Individually packaged in clear plastic bag with mounting screws, ID windows, labels and KeyConnect blank inserts

- Quantity per box:
 - Single-gang: 50 units per box
 - Double-gang: 40 units per box

KeyConnect Back Boxes

Physical and Mechanical Characteristics

- Dimensions (H x W x D):
 - Single-gang: 114 x 70 x 48 mm (4.50 x 2.75 x 1.89 in.)
 - Double-gang: 114 x 117 x 48 mm (4.50 x 4.59 x 1.89 in.)
- Materials: Fire-retardant plastic UL94V-0
- Colors: Almond, electrical white

Packaging

Individually packaged in clear plastic bag with mounting screws

- Quantity per box:
 - Single-gang: 15 units per box
 - Double-gang: 7 units per box

KeyConnect Stainless Steel Faceplates

Physical and Mechanical Characteristics

- Dimensions (H x W x D):
 - Single-gang: 114 x 70 x 6.6 mm (4.50 x 2.75 x 0.26 in.)
 - Double-gang: 114 x 117 x 6.6 mm (4.50 x 4.59 x 0.26 in.)
- Materials: Brushed stainless steel and fire-retardant plastic UL94V-0

Packaging

Individually packaged in clear plastic bag with mounting screws

- Quantity per box:
 - Single-gang: 25 units per box
 - Double-gang: 25 units per box

KeyConnect Wall Mount Phone Plates

Physical and Mechanical Characteristics

- Dimensions (H x W x D):
 - Single-gang: 114 x 70 x 6.6 mm (4.50 x 2.75 x 0.26 in.)

Packaging

Individually packaged in clear plastic bag with mounting screws

- Quantity per box:
 - 50 units per box

KeyConnect Adapters and Boxes

KeyConnect Adapters and Boxes in various styles, sizes and colors provide flexible surface mount, modular furniture and standard electrical plate outlet installation, including high-density workstation outlets.

Features & Benefits

- KeyConnect Adapters available in Decora and 106 styles for use with standard electrical plates
- Available in Decora-style 2, 4 and 6-port and 106-style 2 and 4-port configurations for design flexibility
- KeyConnect Modular Furniture Adapters available in 3 and 4-port configurations for high density workstation outlets in office furniture
- KeyConnect Adapters available in almond, electrical white and black to match electrical plates and suit any office decor
- KeyConnect Boxes available in 1, 2, 4 and 6-port configurations for design flexibility
- KeyConnect Boxes equipped with port shutters to provide dust protection to UTP jacks
- Fire-retardant plastic with UV stabilizer for protection against color degradation
- KeyConnect Adapters are compatible with all KeyConnect UTP and Multimedia Modules

KeyConnect Adapters

Physical and Mechanical Characteristics

- Dimensions (H x W x D):
 - Decora Adapters: 107 x 37 x 6 mm (4.20 x 1.46 x 0.26 in.)
 - 106 Adapters: 104 x 44 x 6 mm (4.09 x 1.74 x 0.26 in.)
 - Modular Furniture Adapters: 47 x 80 x 5 mm (1.84 x 3.13 x 0.19 in.)

- Materials: Fire-retardant plastic UL94V-0

- Colors: Almond, electrical white, black

Packaging

Individually packaged in clear plastic bag with mounting screws and KeyConnect blank inserts

- Quantity per box:
 - Decora Adapter: 100 units per box
 - 106 Adapters: 90 units per box
 - Modular Furniture Adapter: 100 units per box

KeyConnect Side-Entry Boxes*

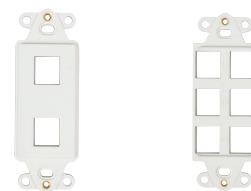
Physical and Mechanical Characteristics

- Dimensions (H x W x D):
 - 1-port: 46 x 65 x 31 mm (1.80 x 2.56 x 1.20 in.)
 - 2-port: 68 x 65 x 31 mm (2.68 x 2.56 x 1.20 in.)
 - 4-port: 118 x 85 x 31 mm (4.63 x 3.35 x 1.20 in.)
 - 6-port: 173 x 85 x 31 mm (6.80 x 3.35 x 1.20 in.)
- Materials: Fire-retardant plastic UL94V-0
- Colors: Almond and electrical white

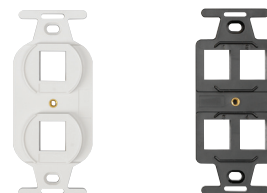
Packaging

Individually packaged in clear plastic bag with mounting screws

- Quantity per box:
 - 1-port: 50 units per box
 - 2-port: 30 units per box
 - 4-port: 20 units per box
 - 6-port: 10 units per box



KeyConnect Decora Adapters: 2-Port, Electrical White (AX104112) and 6-Port, Electrical White (AX104118)



KeyConnect 106 Adapters: 2-Port, Electrical White (AX104121) and 4-Port, Black (AX104125)



KeyConnect Modular Furniture Adapters: 3-Port, Black (AX102292) and 4-Port, Almond (AX103926)



KeyConnect Side Entry Boxes: 4-Port, Electrical White (AX102653)

* The KeyConnect Side-Entry Boxes w/shutters are compatible ONLY with UTP Modular Jacks



MediaFlex Outlets

Compatible with all KeyConnect Modules, MediaFlex Outlets, Boxes and Inserts provide optimum flexibility in configuring multimedia workstation outlets for current and future network needs. The front access design of the outlets offers easy installation and upgrades while multiple colors, single-gang and double-gang configurations and labeling capabilities meet work area aesthetics, density and identification needs.

Features & Benefits

- Modern unique aesthetic design available in almond and electrical white to blend with any office decor
- Front access modular design facilitates installation and ensures evolution
- High configuration flexibility for multimedia outlet applications
- Sturdy design for excellent durability and network protection
- Fire-retardant plastic with UV stabilizer for protection against color degradation
- Faceplate capacity of up to 6 ports per single-gang and 12 ports per double-gang for optimum workstation outlet density
- Double-gang plate comes with a stand-off ring for added installation flexibility
- Labeling capability using large built-in labeling windows at the top and bottom to facilitate outlet identification and ease network management
- Available in 4 and 6-port single-gang faceplate kits for easy ordering

MediaFlex Plates

Physical and Mechanical Characteristics

- Dimensions (H x W x D):
 - Single-gang plates: 114 x 76.2 x 10.6 mm (4.5 x 3.0 x 0.42 in.)
 - Double-gang plates: 114 x 131.8 x 10.6 mm (4.5 x 5.2 x 0.42 in.) faceplate only
 - Double-gang plates mounted on stand-off ring: 117 x 135 x 20 mm (4.62 x 5.31 x 0.78 in.)
- Materials: Fire-retardant plastic UL94V-0
- Colors: Almond and electrical white

Packaging

Individually packaged in clear plastic bag with mounting screws, ID windows, labels and KeyConnect blank inserts

- Quantity per box:
 - Single-gang: 50 units per box
 - Double-gang: 30 units per box with stand-off ring included

MediaFlex Adapter Boxes

Physical and Mechanical Characteristics

- Dimensions (H x W x D):
 - Single-gang: 118 x 79 x 44 mm (4.65 x 3.11 x 1.75 in.)
 - Double-gang: 118 x 135 x 44 mm (4.65 x 5.31 x 1.75 in.)
- Materials: Fire-retardant plastic UL94V-0
- Colors: Almond, electrical white

Packaging

Individually packaged in clear plastic bag

MediaFlex Inserts

Physical and Mechanical Characteristics

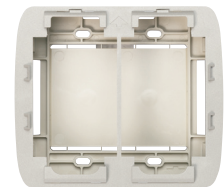
- Dimensions (H x W x D):
 - 2-port flush insert: 23.9 x 52.0 x 10.7 mm (0.94 x 2.05 x 0.42 in.)
 - 2-port angled insert: 35.2 x 52.0 x 19.6 mm (1.39 x 2.05 x 0.77 in.)
 - RCA: 35.2 x 52.0 x 32.2 mm (1.39 x 2.05 x 1.27 in.)
 - SVHS: 35.2 x 52.0 x 26.9 mm (1.39 x 2.05 x 1.06 in.)
 - SVGA: 35.2 x 52.0 x 30.7 mm (1.39 x 2.05 x 1.21 in.)
 - Duplex SC: 35.2 x 52.0 x 31.7 mm (1.39 x 2.05 x 1.25 in.)
- Materials: Fire-retardant plastic UL94V-0
- Colors: Almond and electrical white

Packaging

Individually packaged in clear plastic bag
Standard shipping carton of 25 units



MediaFlex Faceplate Kit for KeyConnect Modules:
Single-gang, 4-port, Almond (AX102428)
Single-gang, 6-port, Almond (AX102430)



MediaFlex Adapter Box, Double-gang, Almond (AX101874)



MediaFlex Inserts for KeyConnect Modules: Flush, 2-Port, Almond (AX102410) and Angled, 2-Port, Almond (AX102412)



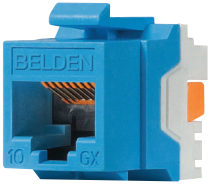
MediaFlex RCA Inserts, 3-Port, Almond (AX101878),
MediaFlex SVHS Inserts, 1-Port, Almond (AX101882)
MediaFlex SVGA Inserts, 1-Port, Almond (AX101886)



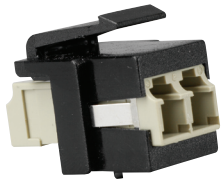
MediaFlex SC Duplex Multimode Insert, Almond (AX101940)



Modules and Accessories



KeyConnect Modular Jack, Blue (AX104156)



LC Duplex Multimode Adapter Module, Black (AX102417)



Video F Coax, Recessed (AX102904)

KeyConnect modular UTP, fiber and coax modules snap easily into KeyConnect Faceplates and MediaFlex outlets to suit any voice, data, video or multimedia application including Belden 10GX, fiber-to-the-desk and high-definition video. They provide optimum performance, density and durability, and are easily removed with the release tool for reconfigurations.

Features & Benefits

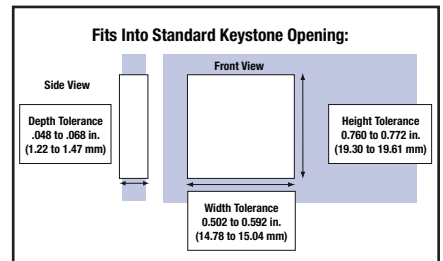
- KeyConnect Modules are available in UTP, coax and fiber to suit any multimedia application and are compact in size to optimize network connectivity density
- KeyConnect Modular Jacks are available in 10GX, CAT6+, and CAT5E to suit any network performance level
- KeyConnect LC Duplex Adapter Module (multimode) includes high-quality phosphor bronze sleeve – provides low insertion loss and excellent durability
- KeyConnect LC Duplex Adapter Module (single-mode) includes high-quality ceramic sleeve – provides precise alignment and long term durability
- All Modules can be easily snapped into faceplates and adapters or in simple sheet metal cut-outs for installation in custom-built devices

Physical and Mechanical Characteristics

- Multimode LC module: beige and aqua adapters with phosphor bronze sleeve
- Single-mode LC module: blue adapter with ceramic sleeve
- ST Compatible MM/SM: metal adapter with ceramic sleeve
- Materials: Fire-retardant plastic UL94V-0
- Colors: Almond, electrical white and black

Packaging

- KeyConnect Modular Jacks
 - Individually packaged
- KeyConnect Multimedia Modules
 - 10 units in a clear plastic bag
- KeyConnect Blank Inserts
 - 10 units in a clear plastic bag



Ordering Information

Workstation Outlets

Faceplates	Part No.	
KeyConnect Faceplates	Almond	Elec. White
1-Port, w/ ID Windows, Single-gang	AX103922	AX102660
2-Port, w/ ID Windows, Single-gang	AX103923	AX102655
4-Port, w/ ID Windows, Single-gang	AX102248	AX102249
6-Port, w/ ID Windows, Single-gang	AX102250	AX102251
12-Port, w/ ID Windows, Double-gang	AX102256	AX102257
Single-gang Back Box, 1.89 in.	AX104127	AX102657
Double-gang Back Box, 1.89 in.	AX104130	AX104131

Contact Customer Service for other colors and configurations.

KeyConnect Stainless Steel Faceplates		
1-Port, Single-gang	AX102006	
2-Port, Single-gang	AX102007	
4-Port, Single-gang	AX102009	
6-Port, Single-gang	AX102010	
12-Port, Double-gang	AX102013	

KeyConnect Wall Mount Phone Plates		
Stainless Steel	AX102005	
Elec. White Plastic, Recessed Port	AX102902	

Adapters and Boxes	Part No.		
KeyConnect Adapters	Almond	Elec. White	Black
Modular Furniture Adapter, 3-Port	AX103925	AX102291	AX102292
Modular Furniture Adapter, 4-Port	AX103926	AX102900	AX102901
Decora Adapter, 2-Port	AX104111	AX104112	AX104113
Decora Adapter, 4-Port	AX103927	AX102266	AX102267
Decora Adapter, 6-Port	AX104117	AX104118	AX104119
106 Adapter, 2-Port	AX104120	AX104121	AX104122
106 Adapter, 4-Port	AX104123	AX104124	AX104125

KeyConnect Side-Entry Boxes, with Shutter Door	Almond	Elec. White
1-Port	AX104132	AX102651
2-Port	AX104133	AX102652
4-Port	AX104134	AX102653
6-Port	AX104135	AX102654

Contact Customer Service for other colors and configurations.

MediaFlex Outlets	Part No.	
MediaFlex Faceplate Kit for KeyConnect Modules	Almond	Elec. White
4-Port, Flush, Single-gang	AX102428	AX102429
6-Port, Flush, Single-gang	AX102430	AX102431
4-Port, Angled, Single-gang	AX102432	AX102433
MediaFlex Plates	Almond	Elec. White
Single-gang	AX101746	AX101747
Double-gang	AX101870	AX101871
MediaFlex Adapter Box, Single-gang	AX102481	AX102482
MediaFlex Adapter Box, Double-gang	AX101874	AX101875

Contact Customer Service for other colors and configurations.

MediaFlex Outlets (cont.)	Part No.	
MediaFlex Insert for KeyConnect Modules	Almond	Elec. White
2-Port, Flush	AX102410	AX102411
2-Port, Angled	AX102412	AX102413
MediaFlex Inserts	Almond	Elec. White
3-port, RCA	AX101878	AX101879
1-port, SVHS	AX101882	AX101883
1-port, SVGA	AX101886	AX101887
SVGA Feedthrough	AX102335	AX102336
SC Duplex Multimode	AX101940	AX101941
SC Duplex Single-mode	AX101936	AX101937
Filler Insert, 1-unit	AX101758	AX101759
Filler Insert, 2-unit	AX101762	AX101763
Window cover, clear (25 units)	AX101773	

Contact Customer Service for other colors and configurations.

Modules and Inserts	Part No.		
KeyConnect Modular Jacks	10GX	CAT6+	CAT5E
Gray	AX102280	AX101318	AX101307
Almond	AX102281	AX101319	AX101308
White	AX102282	AX101320	AX101309
Black	AX102283	AX101321	AX101310
Ivory	AX103073	AX103076	AX103079
Orange	AX104152	AX104189	AX104182
Red	AX104153	AX104190	AX104183
Yellow	AX104154	AX104191	AX104184
Green	AX104155	AX104192	AX104185
Blue	AX104156	AX104193	AX104186
Purple	AX104157	AX104194	AX104187
Orange, TIA606 Color	AX102284	AX101322	AX101311
Red, TIA606 Color	AX102285	AX101323	AX101312
Yellow, TIA606 Color	AX102286	AX101324	AX101313
Green, TIA606 Color	AX102287	AX101325	AX101314
Blue, TIA606 Color	AX102288	AX101326	AX101315
Violet, TIA606 Color	AX102289	AX101327	AX101316
Brown, TIA606 Color	AX102290	AX101328	AX101317

KeyConnect Multimedia Adapter Modules	Almond	Elec. White	Black
LC Duplex Multimode, Beige Adapter	AX102415	AX102416	AX102417
LC Duplex Single-mode	AX102419	AX102420	AX102421
ST Compatible MM/SM	AX102242	AX102243	AX102244
Video F Coax, Recessed	AX102903	AX102904	AX102905

Accessories			
KeyConnect Blank Insert	AX102261	AX102262	AX102263
Connecting Tool		AX100749	
Termination Station		AX101852	
Release Tool		AX101185	