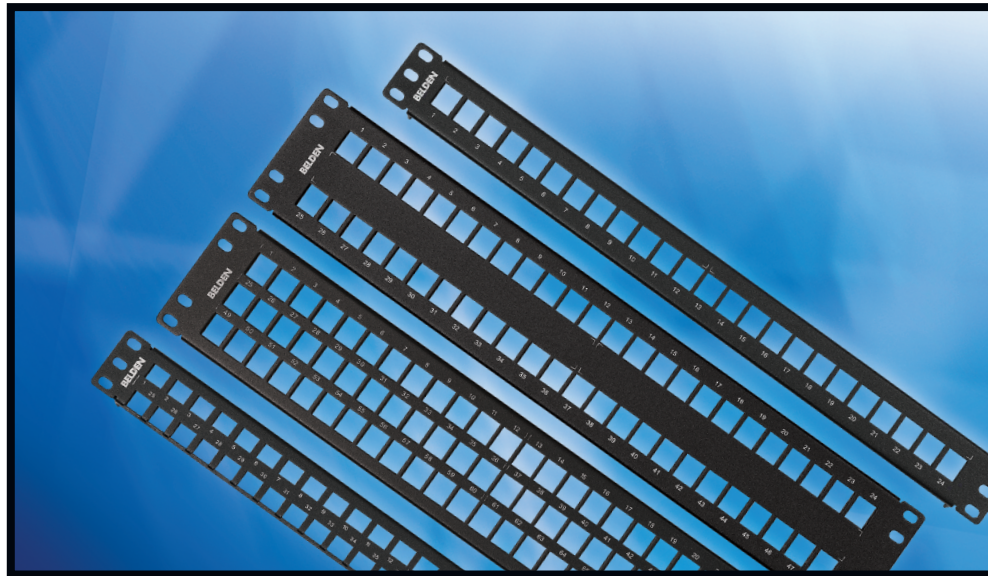


NP 277

KeyConnect™ Patch Panels

This all-metal, preloaded and modular patch panel series provides greater design flexibility for high density Data Center and Telecommunications Room installations – including the ability to use punch-down termination on the back of the panel.



Belden® Presents a Comprehensive Line of KeyConnect All-Metal, Preloaded and Modular Patch Panels

KeyConnect Patch Panel Series

The KeyConnect Patch Panel Series is a comprehensive line of robust all-metal, preloaded and modular patch panels. The series provides a flexible, versatile and high density termination solution for Data Center and Telecommunications Room installations. The preloaded KeyConnect Patch Panels are available in 24-port/1U and 48-port/2U configurations with 10GX® and CAT6+ KeyConnect Modular Jacks. The modular KeyConnect Patch Panels are available in 24-port/1U, 48-port/2U, 72-port/2U and 48-port/1U configurations. These panels can be configured using any KeyConnect UTP or Multimedia Modules.

Features & Benefits

- Available in a wide variety of preloaded and modular configurations for greater design flexibility and optimization of rack and cabinet installations
- Robust all-metal construction to allow for punch down termination directly on the back of the panel
- Large front labeling space facilitating port identification
- LabelFlex laser printable white label sheet supplied with each panel
- Front and back port numbering* to facilitate port location
- Rear cable management brackets to facilitate cable routing
- Compatible with standard 19 in. equipment racks, cabinets or wall mount brackets
- Compatible with KeyConnect Modular Jacks

Applications

- Horizontal distribution or equipment terminations in Data Centers or Telecommunications Rooms
- Interconnect terminations in Consolidation Points

Installation Tips

- Plan the rack/cabinet layout prior to patch panel installation
- Include Cable Management products (see www.belden.com for more information) in installation for optimum cable and patch cord routing
- Use the LabelFlex software (see www.belden.com for more information) to print quality identification labels
- Use the Connecting Tool (AX100749) to terminate KeyConnect Modular Jacks directly in the patch panel or in the Termination Station (AX101852)
- Use the Release Tool (AX101185) to remove KeyConnect Modular Jacks from a patch panel
- Use the Patch Cord Tool (AX102775) to insert or remove patch cords in high-density patch panels

Packaging

- Individually packaged in a cardboard box, including 2 sets of mounting screws (4x10-32 and 4x12-24), cable management brackets, velcro ties and a white LabelFlex label sheet

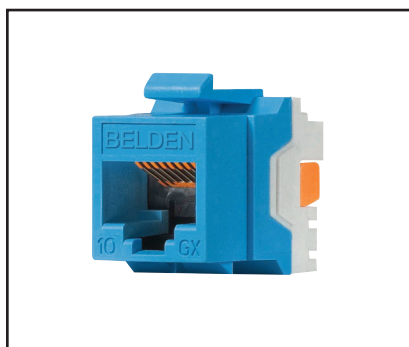
* Except for 48-port/1U patch panels



Packaging Accessories



10GX KeyConnect Patch Panel



Use Belden's KeyConnect Modular Jacks to populate KeyConnect Patch Panels (AX104156)

Technical Specifications

Dimensions (HxWxD)

- Patch Panel without Modules and Cable Management Brackets
- 1U panel: 45 x 483 x 33 mm (1.75 x 19 x 1.3 in.)
- 2U panel: 90 x 483 x 33 mm (3.5 x 19 x 1.3 in.)

Materials

- Panel: steel, 16 gauge, textured powder coated paint, black or titanium
- Modular Jack (preloaded patch panel): see Modular Jack Data Sheet

Ordering Information

Description	Belden Part Number
-------------	--------------------

Patch Panels

10GX KeyConnect Patch Panels (Preloaded)

10GX KeyConnect Patch Panel, 24-port, 1U, Titanium	AX103254
10GX KeyConnect Patch Panel, 48-port, 2U, Titanium	AX103256

CAT6+ KeyConnect Patch Panels (Preloaded)

CAT6+ KeyConnect Patch Panel, 24-port, 1U, Black	AX103253
CAT6+ KeyConnect Patch Panel, 48-port, 2U, Black	AX103255

KeyConnect Modular Patch Panels (Empty)

KeyConnect Patch Panel, 24-port, 1U, Black (Empty)	AX103114
KeyConnect Patch Panel, 48-port, 2U, Black (Empty)	AX103115
KeyConnect Patch Panel, 72-port, 2U, Black (Empty)	AX103116
KeyConnect Patch Panel, 48-port, 1U, Black (Empty)	AX103121

Modular Jacks

KeyConnect Modular Jacks

Color	10GX	CAT6+	CAT5E
Gray	AX102280	AX101318	AX101307
Almond	AX102281	AX101319	AX101308
White	AX102282	AX101320	AX101309
Black	AX102283	AX101321	AX101310
Ivory	AX103073	AX103076	AX103079
Orange	AX104152	AX104189	AX104182
Red	AX104153	AX104190	AX104183
Yellow	AX104154	AX104191	AX104184
Green	AX104155	AX104192	AX104185
Blue	AX104156	AX104193	AX104186
Purple	AX104157	AX104194	AX104187
Orange, TIA 606 Color	AX102284	AX101322	AX101311
Red, TIA 606 Color	AX102285	AX101323	AX101312
Yellow, TIA 606 Color	AX102286	AX101324	AX101313
Green, TIA 606 Color	AX102287	AX101325	AX101314
Blue, TIA 606 Color	AX102288	AX101326	AX101315
Purple, TIA 606 Color	AX102289	AX101327	AX101316

Accessories

KeyConnect Patch Panel Accessories

Blank Insert, Black	AX102263
Modular Jack Dust Cover, Clear	AX101790
Connecting Tool	AX100749
Termination Station	AX101852
Patch Cord Tool	AX102775
Release Tool	AX101185
Cable Preparation Tool	1797B

All information is subject to change without notice, since Belden reserves the right to change its products as progress in engineering and manufacturing methods or other circumstances may warrant.