




Mini Power Distribution System

Power your industrial control systems through an easy-to-install modular power distribution system that's designed to eliminate wiring errors.

-  **Quick assembly** – install these pre-wired and pre-tested solutions instead of wasting time or money hardwiring your system or spending hours troubleshooting wiring issues.
-  **Cost-effective power solution** – decrease your installation and maintenance costs with this simple plug-and-play system. No special tools or training are required to get your system up and running immediately.
-  **Easy to modify or expand** – future-proof your system by easily adding or replacing components. Simply plug new parts into your existing setup for hassle-free system maintenance or upgrades.

Lumberg Automation's 1-3/8 inch, D-sized Mini Power family provides everything you need to interconnect and power your industrial automation processes. With this complete connectivity and power solution, you can easily set up, maintain or expand your system, while maximizing uptime in harsh conditions.

The Mini Power family provides a simple approach to system power through a fully connectorized, or quick-connect system. Machine builders can deliver on their high-performance connectivity requirements and save on installation costs with pre-wired cordsets. This helps reduce the total infrastructure cost and, ultimately, enhances profitability by maintaining a highly reliable system and limiting downtime.



Benefits at a Glance

- Easy to install and configure
- Plug-and-play, quick-connect/disconnect system eliminates the time and expense of hardwiring
- Pre-wired and pre-tested solutions require no special tools or training to manage
- Convenient, easy to handle 1-3/8 inch diameter (D-sized mini)
- Protection against harsh industrial environments through a sealed system
- Operating temperature range of -30° C to +90° C
- IP67 rated to withstand moisture, shock and vibration
- Select from 3-pole or 4-pole connection options to fit your system needs
- Reliable system power and integrity
- 10-14 AWG, up to 42A at 600V
- Listed to UL 2237, with TC-ER rated cable for easier handling and installation
- Certified for multiple industry standards and approvals
- Canadian Standards Association (CSA) Listed cable - C(UL) CIC Control/TC/FT4
- Oil resistance rating I/II to maintain the cordset insulation integrity
- Meets machine tool wire (MTW) specifications (conductors only)

Applications

Designed for facilities with high-power automation operations or industries with regular machine expansion or reconfiguration. The Mini Power modular power distribution system meets current and future system needs.

Available with 3-pole or 4-pole connector options, this system is ideal for use in machine building and industrial automation, specifically for general and automotive manufacturing.

These 1-3/8 inch, D-sized Mini Power double-ended cordsets and cables are industrial-grade to meet standards related to oil-resistance and use in wet or dry conditions. The power distribution system is also sealed, which enables it to operate when exposed to harsh environments and extreme temperatures.

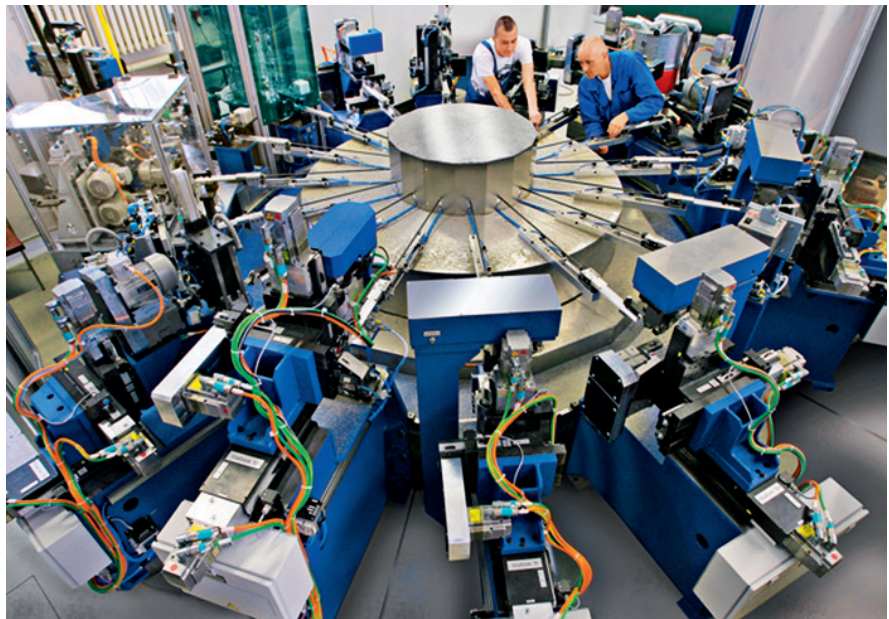
Your Benefits

Lumberg Automation makes it easy to connect sensors, actuators, fieldbus and now – power – with the Mini Power family. With the ability to bundle power and signal needs, you benefit from a complete connectivity solution for industrial automation systems.

This D-sized, 1-3/8 inch power distribution system saves costs by enabling you to run wire without using a conduit. Its plug-and-play capabilities also provide the freedom to easily install and troubleshoot your system components. Reduce the maintenance time spent fixing costly and time-consuming wiring errors with the pre-tested and pre-wired components in the Mini Power family. This helps lower installation and system upkeep costs, while maximizing the system's uptime by speeding up system modifications or upgrades.

This power distribution system enables you to provide reliable power over longer distances through 10-14 AWG (American Wire Gage) cables capable of carrying up to 42 amps at 600 volts. The system is also designed to hang free, while exposed to harsh environments, and comply with Underwriters Laboratory (UL) power specifications.

The Mini Power family is easy to handle due to its lightweight, small size. The tray cables have an exposed run (TC-ER) rating, which enables them to be made from thinner cable jacketing and insulation materials, resulting in a cable diameter that is one-third thinner than ST00W requirements.



Lumberg Automation: System Components

Lumberg Automation's connectivity solutions, including the new Mini Power family, can meet all of your system's needs by enabling you to bundle your power and signal solutions together.

Cordsets and Connectors

At the heart of this power distribution system is the design of the rugged trunk and drop cordsets and connectors. These quick-disconnect cables allow you to install a main trunk line, or feeder line, along a machine's structure. Or, by wiring many devices together in a sequence or ring (e.g., a daisy chain), you can distribute power to multiple machines, and provide drops and branches to conveniently supply power, as needed.

Tees and Reducers

No matter how complex your machine or motor control system design is, tees and reducers give you flexibility for a modular wiring design. You can combine tees and drop connectors to link field devices through a branch connection, or use tees with a trunk connector to split the main feeder circuit into sub-segments.

Receptacles

Mini Power receptacles offer a quick-connect interface to the device or cabinet, and are well-suited for installation on motors and drives to serve as a termination point for cabling.



Mini Power 3-Pole, TC-ER Rated, Red Overmold Cordset

D-Size 1 3/8", 10 AWG Male Straight to Female Straight		D-Size 1 3/8" to A-Size 7/8", 14 AWG Male Straight to Female Straight		D-Size 1 3/8", 10 AWG Female Straight		A-Size 7/8", 14 AWG Male Straight to Female Straight	
Part No.	Description	Part No.	Description	Part No.	Description	Part No.	Description
511000883	RSP 3-RKP 3-800/0.5M-R	511000906	RSP 3-RKPA 3-802/0.5M-R	511000914	RKP 3-800/0.5M-R	511000945	RSPA 3-RKPA 3-802/0.5M-R
511000884	RSP 3-RKP 3-800/1M-R	511000907	RSP 3-RKPA 3-802/1M-R	511000915	RKP 3-800/1M-R	511000946	RSPA 3-RKPA 3-802/1M-R
511000885	RSP 3-RKP 3-800/1.5M-R	511000908	RSP 3-RKPA 3-802/1.5M-R	511000916	RKP 3-800/1.5M-R	511000947	RSPA 3-RKPA 3-802/1.5M-R
511000886	RSP 3-RKP 3-800/2M-R	511000909	RSP 3-RKPA 3-802/2M-R	511000917	RKP 3-800/2M-R	511000948	RSPA 3-RKPA 3-802/2M-R
511000887	RSP 3-RKP 3-800/2.5M-R	511000910	RSP 3-RKPA 3-802/2.5M-R	511000918	RKP 3-800/2.5M-R	511000949	RSPA 3-RKPA 3-802/2.5M-R
511000888	RSP 3-RKP 3-800/3M-R	511000911	RSP 3-RKPA 3-802/3M-R	511000919	RKP 3-800/3M-R	511000950	RSPA 3-RKPA 3-802/3M-R
511000889	RSP 3-RKP 3-800/4M-R	511000912	RSP 3-RKPA 3-802/4M-R	511000920	RKP 3-800/4M-R	511000951	RSPA 3-RKPA 3-802/4M-R
511000890	RSP 3-RKP 3-800/5M-R	511000913	RSP 3-RKPA 3-802/5M-R	511000921	RKP 3-800/5M-R	511000952	RSPA 3-RKPA 3-802/5M-R
511000891	RSP 3-RKP 3-800/6M-R					511000953	RSPA 3-RKPA 3-802/6M-R
511000892	RSP 3-RKP 3-800/8M-R					511000954	RSPA 3-RKPA 3-802/8M-R
511000893	RSP 3-RKP 3-800/10M-R					511000955	RSPA 3-RKPA 3-802/10M-R
511000894	RSP 3-RKP 3-800/12M-R					511000956	RSPA 3-RKPA 3-802/12M-R
511000895	RSP 3-RKP 3-800/14M-R					511000957	RSPA 3-RKPA 3-802/14M-R
511000896	RSP 3-RKP 3-800/15M-R					511000958	RSPA 3-RKPA 3-802/15M-R
511000897	RSP 3-RKP 3-800/18M-R					511000959	RSPA 3-RKPA 3-802/18M-R
511000898	RSP 3-RKP 3-800/20M-R					511000960	RSPA 3-RKPA 3-802/20M-R
511000899	RSP 3-RKP 3-800/22M-R					511000961	RSPA 3-RKPA 3-802/22M-R
511000900	RSP 3-RKP 3-800/25M-R					511000962	RSPA 3-RKPA 3-802/25M-R
511000901	RSP 3-RKP 3-800/30M-R					511000963	RSPA 3-RKPA 3-802/30M-R
511000902	RSP 3-RKP 3-800/35M-R					511000964	RSPA 3-RKPA 3-802/35M-R
511000903	RSP 3-RKP 3-800/40M-R					511000965	RSPA 3-RKPA 3-802/40M-R
511000904	RSP 3-RKP 3-800/45M-R					511000966	RSPA 3-RKPA 3-802/45M-R
511000905	RSP 3-RKP 3-800/50M-R					511000967	RSPA 3-RKPA 3-802/50M-R

Materials				Electrical		Mechanical	
Molded Body	Coupling Nut	Contacts	Insert	Current Rating	Voltage Rating	Temperature Rating	Protection Rating
PVC, Red	CuZn/Ni	CuSn alloy/ Gold over Ni plated	PVC, Red	10AWG - 42A 14AWG - 18A	600V	-30°C (-86°F) / +90°C (194°F)	NEMA 6P - IP68, IP67

D-Size 1 3/8" Mini Power 3-Pole, 10 AWG TC-ER Rated Cable, Double-ended Cordset

Male Straight to Female Straight		Male Straight to Female 90°		Male 90° to Female Straight		Male 90° to Female 90°	
Part No.	Description	Part No.	Description	Part No.	Description	Part No.	Description
511000396	RSP 3-RKP 3-800/0.5M	511000419	RSP 3-RKWP 3-800/0.5M	511000442	RSWP 3-RKP 3-800/0.5M	511000465	RSWP 3-RKWP 3-800/0.5M
511000397	RSP 3-RKP 3-800/1M	511000420	RSP 3-RKWP 3-800/1M	511000443	RSWP 3-RKP 3-800/1M	511000466	RSWP 3-RKWP 3-800/1M
511000398	RSP 3-RKP 3-800/1.5M	511000421	RSP 3-RKWP 3-800/1.5M	511000444	RSWP 3-RKP 3-800/1.5M	511000467	RSWP 3-RKWP 3-800/1.5M
511000399	RSP 3-RKP 3-800/2M	511000422	RSP 3-RKWP 3-800/2M	511000445	RSWP 3-RKP 3-800/2M	511000468	RSWP 3-RKWP 3-800/2M
511000400	RSP 3-RKP 3-800/2.5M	511000423	RSP 3-RKWP 3-800/2.5M	511000446	RSWP 3-RKP 3-800/2.5M	511000469	RSWP 3-RKWP 3-800/2.5M
511000401	RSP 3-RKP 3-800/3M	511000424	RSP 3-RKWP 3-800/3M	511000447	RSWP 3-RKP 3-800/3M	511000470	RSWP 3-RKWP 3-800/3M
511000402	RSP 3-RKP 3-800/4M	511000425	RSP 3-RKWP 3-800/4M	511000448	RSWP 3-RKP 3-800/4M	511000471	RSWP 3-RKWP 3-800/4M
511000403	RSP 3-RKP 3-800/5M	511000426	RSP 3-RKWP 3-800/5M	511000449	RSWP 3-RKP 3-800/5M	511000472	RSWP 3-RKWP 3-800/5M
511000404	RSP 3-RKP 3-800/6M	511000427	RSP 3-RKWP 3-800/6M	511000450	RSWP 3-RKP 3-800/6M	511000473	RSWP 3-RKWP 3-800/6M
511000405	RSP 3-RKP 3-800/8M	511000428	RSP 3-RKWP 3-800/8M	511000451	RSWP 3-RKP 3-800/8M	511000474	RSWP 3-RKWP 3-800/8M
511000406	RSP 3-RKP 3-800/10M	511000429	RSP 3-RKWP 3-800/10M	511000452	RSWP 3-RKP 3-800/10M	511000475	RSWP 3-RKWP 3-800/10M
511000407	RSP 3-RKP 3-800/12M	511000430	RSP 3-RKWP 3-800/12M	511000453	RSWP 3-RKP 3-800/12M	511000476	RSWP 3-RKWP 3-800/12M
511000408	RSP 3-RKP 3-800/14M	511000431	RSP 3-RKWP 3-800/14M	511000454	RSWP 3-RKP 3-800/14M	511000477	RSWP 3-RKWP 3-800/14M
511000409	RSP 3-RKP 3-800/15M	511000432	RSP 3-RKWP 3-800/15M	511000455	RSWP 3-RKP 3-800/15M	511000478	RSWP 3-RKWP 3-800/15M
511000410	RSP 3-RKP 3-800/18M	511000433	RSP 3-RKWP 3-800/18M	511000456	RSWP 3-RKP 3-800/18M	511000479	RSWP 3-RKWP 3-800/18M
511000411	RSP 3-RKP 3-800/20M	511000434	RSP 3-RKWP 3-800/20M	511000457	RSWP 3-RKP 3-800/20M	511000480	RSWP 3-RKWP 3-800/20M
511000412	RSP 3-RKP 3-800/22M	511000435	RSP 3-RKWP 3-800/22M	511000458	RSWP 3-RKP 3-800/22M	511000481	RSWP 3-RKWP 3-800/22M
511000413	RSP 3-RKP 3-800/25M	511000436	RSP 3-RKWP 3-800/25M	511000459	RSWP 3-RKP 3-800/25M	511000482	RSWP 3-RKWP 3-800/25M
511000414	RSP 3-RKP 3-800/30M	511000437	RSP 3-RKWP 3-800/30M	511000460	RSWP 3-RKP 3-800/30M	511000483	RSWP 3-RKWP 3-800/30M
511000415	RSP 3-RKP 3-800/35M	511000438	RSP 3-RKWP 3-800/35M	511000461	RSWP 3-RKP 3-800/35M	511000484	RSWP 3-RKWP 3-800/35M
511000416	RSP 3-RKP 3-800/40M	511000439	RSP 3-RKWP 3-800/40M	511000462	RSWP 3-RKP 3-800/40M	511000485	RSWP 3-RKWP 3-800/40M
511000417	RSP 3-RKP 3-800/45M	511000440	RSP 3-RKWP 3-800/45M	511000463	RSWP 3-RKP 3-800/45M	511000486	RSWP 3-RKWP 3-800/45M
511000418	RSP 3-RKP 3-800/50M	511000441	RSP 3-RKWP 3-800/50M	511000464	RSWP 3-RKP 3-800/50M	511000487	RSWP 3-RKWP 3-800/50M

Materials				Electrical		Mechanical		Cable			
Molded Body	Coupling Nut	Contacts	Insert	Current Rating	Voltage Rating	Temperature Rating	Protection Rating	Cable Jacket	Cable O.D.	Conductors	UL Recognition
PVC, black	CuZn / Ni	CuSn alloy / gold over Ni plated	PVC / nylon	42A	600V	-30°C (-86°F) / +90°C (194°F)	NEMA 6P-IP68, IP67	TPE, black	.474"	10AWG, Stranded Bare Copper	TC-ER, 2237

D-Size 1 3/8" Mini Power 4-Pole, 10 AWG TC-ER Rated Cable, Double-ended Cordset

Male Straight to Female Straight		Male Straight to Female 90°		Male 90° to Female Straight		Male 90° to Female 90°	
Part No.	Description	Part No.	Description	Part No.	Description	Part No.	Description
511000004	RSP 4-RKP 4-803/0.5M	511000027	RSP 4-RKWP 4-803/0.5M	511000050	RSWP 4-RKP 4-803/0.5M	511000073	RSWP 4-RKWP 4-803/0.5M
511000005	RSP 4-RKP 4-803/1M	511000028	RSP 4-RKWP 4-803/1M	511000051	RSWP 4-RKP 4-803/1M	511000074	RSWP 4-RKWP 4-803/1M
511000006	RSP 4-RKP 4-803/1.5M	511000029	RSP 4-RKWP 4-803/1.5M	511000052	RSWP 4-RKP 4-803/1.5M	511000075	RSWP 4-RKWP 4-803/1.5M
511000007	RSP 4-RKP 4-803/2M	511000030	RSP 4-RKWP 4-803/2M	511000053	RSWP 4-RKP 4-803/2M	511000076	RSWP 4-RKWP 4-803/2M
511000008	RSP 4-RKP 4-803/2.5M	511000031	RSP 4-RKWP 4-803/2.5M	511000054	RSWP 4-RKP 4-803/2.5M	511000077	RSWP 4-RKWP 4-803/2.5M
511000009	RSP 4-RKP 4-803/3M	511000032	RSP 4-RKWP 4-803/3M	511000055	RSWP 4-RKP 4-803/3M	511000078	RSWP 4-RKWP 4-803/3M
511000010	RSP 4-RKP 4-803/4M	511000033	RSP 4-RKWP 4-803/4M	511000056	RSWP 4-RKP 4-803/4M	511000079	RSWP 4-RKWP 4-803/4M
511000011	RSP 4-RKP 4-803/5M	511000034	RSP 4-RKWP 4-803/5M	511000057	RSWP 4-RKP 4-803/5M	511000080	RSWP 4-RKWP 4-803/5M
511000012	RSP 4-RKP 4-803/6M	511000035	RSP 4-RKWP 4-803/6M	511000058	RSWP 4-RKP 4-803/6M	511000081	RSWP 4-RKWP 4-803/6M
511000013	RSP 4-RKP 4-803/8M	511000036	RSP 4-RKWP 4-803/8M	511000059	RSWP 4-RKP 4-803/8M	511000082	RSWP 4-RKWP 4-803/8M
511000014	RSP 4-RKP 4-803/10M	511000037	RSP 4-RKWP 4-803/10M	511000060	RSWP 4-RKP 4-803/10M	511000083	RSWP 4-RKWP 4-803/10M
511000015	RSP 4-RKP 4-803/12M	511000038	RSP 4-RKWP 4-803/12M	511000061	RSWP 4-RKP 4-803/12M	511000084	RSWP 4-RKWP 4-803/12M
511000016	RSP 4-RKP 4-803/14M	511000039	RSP 4-RKWP 4-803/14M	511000062	RSWP 4-RKP 4-803/14M	511000085	RSWP 4-RKWP 4-803/14M
511000017	RSP 4-RKP 4-803/15M	511000040	RSP 4-RKWP 4-803/15M	511000063	RSWP 4-RKP 4-803/15M	511000086	RSWP 4-RKWP 4-803/15M
511000018	RSP 4-RKP 4-803/18M	511000041	RSP 4-RKWP 4-803/18M	511000064	RSWP 4-RKP 4-803/18M	511000087	RSWP 4-RKWP 4-803/18M
511000019	RSP 4-RKP 4-803/20M	511000042	RSP 4-RKWP 4-803/20M	511000065	RSWP 4-RKP 4-803/20M	511000088	RSWP 4-RKWP 4-803/20M
511000020	RSP 4-RKP 4-803/22M	511000043	RSP 4-RKWP 4-803/22M	511000066	RSWP 4-RKP 4-803/22M	511000089	RSWP 4-RKWP 4-803/22M
511000021	RSP 4-RKP 4-803/25M	511000044	RSP 4-RKWP 4-803/25M	511000067	RSWP 4-RKP 4-803/25M	511000090	RSWP 4-RKWP 4-803/25M
511000022	RSP 4-RKP 4-803/30M	511000045	RSP 4-RKWP 4-803/30M	511000068	RSWP 4-RKP 4-803/30M	511000091	RSWP 4-RKWP 4-803/30M
511000023	RSP 4-RKP 4-803/35M	511000046	RSP 4-RKWP 4-803/35M	511000069	RSWP 4-RKP 4-803/35M	511000092	RSWP 4-RKWP 4-803/35M
511000024	RSP 4-RKP 4-803/40M	511000047	RSP 4-RKWP 4-803/40M	511000070	RSWP 4-RKP 4-803/40M	511000093	RSWP 4-RKWP 4-803/40M
511000025	RSP 4-RKP 4-803/45M	511000048	RSP 4-RKWP 4-803/45M	511000071	RSWP 4-RKP 4-803/45M	511000094	RSWP 4-RKWP 4-803/45M
511000026	RSP 4-RKP 4-803/50M	511000049	RSP 4-RKWP 4-803/50M	511000072	RSWP 4-RKP 4-803/50M	511000095	RSWP 4-RKWP 4-803/50M

Materials				Electrical		Mechanical		Cable			
Molded Body	Coupling Nut	Contacts	Insert	Current Rating	Voltage Rating	Temperature Rating	Protection Rating	Cable Jacket	Cable O.D.	Conductors	UL Recognition
PVC, black	CuZn / Ni	CuSn alloy / gold over Ni plated	PVC / nylon	40A	600V	-30°C (-86°F) / +90°C (194°F)	NEMA 6P-IP68, IP67	TPE, black	.519"	10AWG, Stranded Bare Copper	TC-ER, 2237

D-Size 1 3/8" 3-Pole, 10 AWG TC-ER Rated Cable, Single-ended Cordset

Male Straight		Male 90°		Female Straight		Female 90°	
Part No.	Description	Part No.	Description	Part No.	Description	Part No.	Description
511000488	RSP 3-800/0.5M	511000511	RSWP 3-800/0.5M	511000534	RKP 3-800/0.5M	511000557	RKWP 3-800/0.5M
511000489	RSP 3-800/1M	511000512	RSWP 3-800/1M	511000535	RKP 3-800/1M	511000558	RKWP 3-800/1M
511000490	RSP 3-800/1.5M	511000513	RSWP 3-800/1.5M	511000536	RKP 3-800/1.5M	511000559	RKWP 3-800/1.5M
511000491	RSP 3-800/2M	511000514	RSWP 3-800/2M	511000537	RKP 3-800/2M	511000560	RKWP 3-800/2M
511000492	RSP 3-800/2.5M	511000515	RSWP 3-800/2.5M	511000538	RKP 3-800/2.5M	511000561	RKWP 3-800/2.5M
511000493	RSP 3-800/3M	511000516	RSWP 3-800/3M	511000539	RKP 3-800/3M	511000562	RKWP 3-800/3M
511000494	RSP 3-800/4M	511000517	RSWP 3-800/4M	511000540	RKP 3-800/4M	511000563	RKWP 3-800/4M
511000495	RSP 3-800/5M	511000518	RSWP 3-800/5M	511000541	RKP 3-800/5M	511000564	RKWP 3-800/5M
511000496	RSP 3-800/6M	511000519	RSWP 3-800/6M	511000542	RKP 3-800/6M	511000565	RKWP 3-800/6M
511000497	RSP 3-800/8M	511000520	RSWP 3-800/8M	511000543	RKP 3-800/8M	511000566	RKWP 3-800/8M
511000498	RSP 3-800/10M	511000521	RSWP 3-800/10M	511000544	RKP 3-800/10M	511000567	RKWP 3-800/10M
511000499	RSP 3-800/12M	511000522	RSWP 3-800/12M	511000545	RKP 3-800/12M	511000568	RKWP 3-800/12M
511000500	RSP 3-800/14M	511000523	RSWP 3-800/14M	511000546	RKP 3-800/14M	511000569	RKWP 3-800/14M
511000501	RSP 3-800/15M	511000524	RSWP 3-800/15M	511000547	RKP 3-800/15M	511000570	RKWP 3-800/15M
511000502	RSP 3-800/18M	511000525	RSWP 3-800/18M	511000548	RKP 3-800/18M	511000571	RKWP 3-800/18M
511000503	RSP 3-800/20M	511000526	RSWP 3-800/20M	511000549	RKP 3-800/20M	511000572	RKWP 3-800/20M
511000504	RSP 3-800/22M	511000527	RSWP 3-800/22M	511000550	RKP 3-800/22M	511000573	RKWP 3-800/22M
511000505	RSP 3-800/25M	511000528	RSWP 3-800/25M	511000551	RKP 3-800/25M	511000574	RKWP 3-800/25M
511000506	RSP 3-800/30M	511000529	RSWP 3-800/30M	511000552	RKP 3-800/30M	511000575	RKWP 3-800/30M
511000507	RSP 3-800/35M	511000530	RSWP 3-800/35M	511000553	RKP 3-800/35M	511000576	RKWP 3-800/35M
511000508	RSP 3-800/40M	511000531	RSWP 3-800/40M	511000554	RKP 3-800/40M	511000577	RKWP 3-800/40M
511000509	RSP 3-800/45M	511000532	RSWP 3-800/45M	511000555	RKP 3-800/45M	511000578	RKWP 3-800/45M
511000510	RSP 3-800/50M	511000533	RSWP 3-800/50M	511000556	RKP 3-800/50M	511000579	RKWP 3-800/50M

Materials				Electrical		Mechanical		Cable			
Molded Body	Coupling Nut	Contacts	Insert	Current Rating	Voltage Rating	Temperature Rating	Protection Rating	Cable Jacket	Cable O.D.	Conductors	UL Recognition
PVC, black	CuZn / Ni	CuSn alloy / gold over Ni plated	PVC / nylon	42A	600V	-30°C (-86°F) / +90°C (194°F)	NEMA 6P-IP68, IP67	TPE, black	.474"	10 AWG, Stranded Bare Copper	TC-ER, 2237

D-Size 1 3/8" 4-Pole, 10 AWG TC-ER Rated Cable, Single-ended Cordset

Male Straight		Male 90°		Female Straight		Female 90°	
Part No.	Description	Part No.	Description	Part No.	Description	Part No.	Description
511000096	RSP 4-803/0.5M	511000119	RSWP 4-803/0.5M	511000142	RKP 4-803/0.5M	511000165	RKWP 4-803/0.5M
511000097	RSP 4-803/1M	511000120	RSWP 4-803/1M	511000143	RKP 4-803/1M	511000166	RKWP 4-803/1M
511000098	RSP 4-803/1.5M	511000121	RSWP 4-803/1.5M	511000144	RKP 4-803/1.5M	511000167	RKWP 4-803/1.5M
511000099	RSP 4-803/2M	511000122	RSWP 4-803/2M	511000145	RKP 4-803/2M	511000168	RKWP 4-803/2M
511000100	RSP 4-803/2.5M	511000123	RSWP 4-803/2.5M	511000146	RKP 4-803/2.5M	511000169	RKWP 4-803/2.5M
511000101	RSP 4-803/3M	511000124	RSWP 4-803/3M	511000147	RKP 4-803/3M	511000170	RKWP 4-803/3M
511000102	RSP 4-803/4M	511000125	RSWP 4-803/4M	511000148	RKP 4-803/4M	511000171	RKWP 4-803/4M
511000103	RSP 4-803/5M	511000126	RSWP 4-803/5M	511000149	RKP 4-803/5M	511000172	RKWP 4-803/5M
511000104	RSP 4-803/6M	511000129	RSWP 4-803/10M	511000150	RKP 4-803/6M	511000173	RKWP 4-803/6M
511000105	RSP 4-803/8M	511000130	RSWP 4-803/12M	511000151	RKP 4-803/8M	511000174	RKWP 4-803/8M
511000106	RSP 4-803/10M	511000131	RSWP 4-803/14M	511000152	RKP 4-803/10M	511000175	RKWP 4-803/10M
511000107	RSP 4-803/12M	511000132	RSWP 4-803/15M	511000153	RKP 4-803/12M	511000176	RKWP 4-803/12M
511000108	RSP 4-803/14M	511000133	RSWP 4-803/18M	511000154	RKP 4-803/14M	511000177	RKWP 4-803/14M
511000109	RSP 4-803/15M	511000134	RSWP 4-803/20M	511000155	RKP 4-803/15M	511000178	RKWP 4-803/15M
511000110	RSP 4-803/18M	511000135	RSWP 4-803/22M	511000156	RKP 4-803/18M	511000179	RKWP 4-803/18M
511000111	RSP 4-803/20M	511000136	RSWP 4-803/25M	511000157	RKP 4-803/20M	511000180	RKWP 4-803/20M
511000112	RSP 4-803/22M	511000127	RSWP 4-803/6M	511000158	RKP 4-803/22M	511000181	RKWP 4-803/22M
511000113	RSP 4-803/25M	511000137	RSWP 4-803/30M	511000159	RKP 4-803/25M	511000182	RKWP 4-803/25M
511000114	RSP 4-803/30M	511000128	RSWP 4-803/8M	511000160	RKP 4-803/30M	511000183	RKWP 4-803/30M
511000115	RSP 4-803/35M	511000138	RSWP 4-803/35M	511000161	RKP 4-803/35M	511000184	RKWP 4-803/35M
511000116	RSP 4-803/40M	511000139	RSWP 4-803/40M	511000162	RKP 4-803/40M	511000185	RKWP 4-803/40M
511000117	RSP 4-803/45M	511000140	RSWP 4-803/45M	511000163	RKP 4-803/45M	511000186	RKWP 4-803/45M
511000118	RSP 4-803/50M	511000141	RSWP 4-803/50M	511000164	RKP 4-803/50M	511000187	RKWP 4-803/50M

Materials				Electrical		Mechanical		Cable			
Molded Body	Coupling Nut	Contacts	Insert	Current Rating	Voltage Rating	Temperature Rating	Protection Rating	Cable Jacket	Cable O.D.	Conductors	UL Recognition
PVC, black	CuZn / Ni	CuSn alloy / gold over Ni plated	PVC / nylon	40A	600V	-30°C (-86°F) / +90°C (194°F)	NEMA 6P-IP68, IP67	TPE, black	.519"	10 AWG, Stranded Bare Copper	TC-ER, 2237

A-Size Mini, 7/8", 3-Pole, 14 AWG TC-ER Rated Cable, Double-ended Cordset

Male Straight to Female Straight		Male Straight to Female 90°		Male 90° to Female Straight		Male 90° to Female 90°	
Part No.	Description	Part No.	Description	Part No.	Description	Part No.	Description
511000580	RSPA 3-RKPA 3-802/0.5M	511000603	RSPA 3-RKWPA 3-802/0.5M	511000626	RSWPA 3-RKPA 3-802/0.5M	511000649	RSWPA 3-RKWPA 3-802/0.5M
511000581	RSPA 3-RKPA 3-802/1M	511000604	RSPA 3-RKWPA 3-802/1M	511000627	RSWPA 3-RKPA 3-802/1M	511000650	RSWPA 3-RKWPA 3-802/1M
511000582	RSPA 3-RKPA 3-802/1.5M	511000605	RSPA 3-RKWPA 3-802/1.5M	511000628	RSWPA 3-RKPA 3-802/1.5M	511000651	RSWPA 3-RKWPA 3-802/1.5M
511000583	RSPA 3-RKPA 3-802/2M	511000606	RSPA 3-RKWPA 3-802/2M	511000629	RSWPA 3-RKPA 3-802/2M	511000652	RSWPA 3-RKWPA 3-802/2M
511000584	RSPA 3-RKPA 3-802/2.5M	511000607	RSPA 3-RKWPA 3-802/2.5M	511000630	RSWPA 3-RKPA 3-802/2.5M	511000653	RSWPA 3-RKWPA 3-802/2.5M
511000585	RSPA 3-RKPA 3-802/3M	511000608	RSPA 3-RKWPA 3-802/3M	511000631	RSWPA 3-RKPA 3-802/3M	511000654	RSWPA 3-RKWPA 3-802/3M
511000586	RSPA 3-RKPA 3-802/4M	511000609	RSPA 3-RKWPA 3-802/4M	511000632	RSWPA 3-RKPA 3-802/4M	511000655	RSWPA 3-RKWPA 3-802/4M
511000587	RSPA 3-RKPA 3-802/5M	511000610	RSPA 3-RKWPA 3-802/5M	511000633	RSWPA 3-RKPA 3-802/5M	511000656	RSWPA 3-RKWPA 3-802/5M
511000588	RSPA 3-RKPA 3-802/6M	511000611	RSPA 3-RKWPA 3-802/6M	511000634	RSWPA 3-RKPA 3-802/6M	511000657	RSWPA 3-RKWPA 3-802/6M
511000589	RSPA 3-RKPA 3-802/8M	511000612	RSPA 3-RKWPA 3-802/8M	511000635	RSWPA 3-RKPA 3-802/8M	511000658	RSWPA 3-RKWPA 3-802/8M
511000590	RSPA 3-RKPA 3-802/10M	511000613	RSPA 3-RKWPA 3-802/10M	511000636	RSWPA 3-RKPA 3-802/10M	511000659	RSWPA 3-RKWPA 3-802/10M
511000591	RSPA 3-RKPA 3-802/12M	511000614	RSPA 3-RKWPA 3-802/12M	511000637	RSWPA 3-RKPA 3-802/12M	511000660	RSWPA 3-RKWPA 3-802/12M
511000592	RSPA 3-RKPA 3-802/14M	511000615	RSPA 3-RKWPA 3-802/14M	511000638	RSWPA 3-RKPA 3-802/14M	511000661	RSWPA 3-RKWPA 3-802/14M
511000593	RSPA 3-RKPA 3-802/15M	511000616	RSPA 3-RKWPA 3-802/15M	511000639	RSWPA 3-RKPA 3-802/15M	511000662	RSWPA 3-RKWPA 3-802/15M
511000594	RSPA 3-RKPA 3-802/18M	511000617	RSPA 3-RKWPA 3-802/18M	511000640	RSWPA 3-RKPA 3-802/18M	511000663	RSWPA 3-RKWPA 3-802/18M
511000595	RSPA 3-RKPA 3-802/20M	511000618	RSPA 3-RKWPA 3-802/20M	511000641	RSWPA 3-RKPA 3-802/20M	511000664	RSWPA 3-RKWPA 3-802/20M
511000596	RSPA 3-RKPA 3-802/22M	511000619	RSPA 3-RKWPA 3-802/22M	511000642	RSWPA 3-RKPA 3-802/22M	511000665	RSWPA 3-RKWPA 3-802/22M
511000597	RSPA 3-RKPA 3-802/25M	511000620	RSPA 3-RKWPA 3-802/25M	511000643	RSWPA 3-RKPA 3-802/25M	511000666	RSWPA 3-RKWPA 3-802/25M
511000598	RSPA 3-RKPA 3-802/30M	511000621	RSPA 3-RKWPA 3-802/30M	511000644	RSWPA 3-RKPA 3-802/30M	511000667	RSWPA 3-RKWPA 3-802/30M
511000599	RSPA 3-RKPA 3-802/35M	511000622	RSPA 3-RKWPA 3-802/35M	511000645	RSWPA 3-RKPA 3-802/35M	511000668	RSWPA 3-RKWPA 3-802/35M
511000600	RSPA 3-RKPA 3-802/40M	511000623	RSPA 3-RKWPA 3-802/40M	511000646	RSWPA 3-RKPA 3-802/40M	511000669	RSWPA 3-RKWPA 3-802/40M
511000601	RSPA 3-RKPA 3-802/45M	511000624	RSPA 3-RKWPA 3-802/45M	511000647	RSWPA 3-RKPA 3-802/45M	511000670	RSWPA 3-RKWPA 3-802/45M
511000602	RSPA 3-RKPA 3-802/50M	511000625	RSPA 3-RKWPA 3-802/50M	511000648	RSWPA 3-RKPA 3-802/50M	511000671	RSWPA 3-RKWPA 3-802/50M

Materials				Electrical		Mechanical		Cable			
Molded Body	Coupling Nut	Contacts	Insert	Current Rating	Voltage Rating	Temperature Rating	Protection Rating	Cable Jacket	Cable O.D.	Conductors	UL Recognition
PVC, black	CuZn / Ni	CuSn alloy / gold over Ni plated	PVC / nylon	18A	600V	-30°C (-86°F) / +90°C (194°F)	NEMA 6P-IP68, IP67	TPE, black	.359"	14 AWG	TC-ER, 2237

A-Size 7/8" Mini, 4-Pole, 14 AWG TC-ER Rated Cable Double-ended Cordset

Male Straight to Female Straight		Male Straight to Female 90°		Male 90° to Female Straight		Male 90° to Female 90°	
Part No.	Description	Part No.	Description	Part No.	Description	Part No.	Description
511000188	RSPA 4-RKPA 4-805/0.5M	511000211	RSPA 4-RKWPA 4-805/0.5M	511000234	RSWPA 4-RKPA 4-805/0.5M	511000257	RSWPA 4-RKWPA 4-805/0.5M
511000189	RSPA 4-RKPA 4-805/1M	511000212	RSPA 4-RKWPA 4-805/1M	511000235	RSWPA 4-RKPA 4-805/1M	511000258	RSWPA 4-RKWPA 4-805/1M
511000190	RSPA 4-RKPA 4-805/1.5M	511000213	RSPA 4-RKWPA 4-805/1.5M	511000236	RSWPA 4-RKPA 4-805/1.5M	511000259	RSWPA 4-RKWPA 4-805/1.5M
511000191	RSPA 4-RKPA 4-805/2M	511000214	RSPA 4-RKWPA 4-805/2M	511000237	RSWPA 4-RKPA 4-805/2M	511000260	RSWPA 4-RKWPA 4-805/2M
511000192	RSPA 4-RKPA 4-805/2.5M	511000215	RSPA 4-RKWPA 4-805/2.5M	511000238	RSWPA 4-RKPA 4-805/2.5M	511000261	RSWPA 4-RKWPA 4-805/2.5M
511000193	RSPA 4-RKPA 4-805/3M	511000216	RSPA 4-RKWPA 4-805/3M	511000239	RSWPA 4-RKPA 4-805/3M	511000262	RSWPA 4-RKWPA 4-805/3M
511000194	RSPA 4-RKPA 4-805/4M	511000217	RSPA 4-RKWPA 4-805/4M	511000240	RSWPA 4-RKPA 4-805/4M	511000263	RSWPA 4-RKWPA 4-805/4M
511000195	RSPA 4-RKPA 4-805/5M	511000218	RSPA 4-RKWPA 4-805/5M	511000241	RSWPA 4-RKPA 4-805/5M	511000264	RSWPA 4-RKWPA 4-805/5M
511000196	RSPA 4-RKPA 4-805/6M	511000219	RSPA 4-RKWPA 4-805/6M	511000242	RSWPA 4-RKPA 4-805/6M	511000265	RSWPA 4-RKWPA 4-805/6M
511000197	RSPA 4-RKPA 4-805/8M	511000220	RSPA 4-RKWPA 4-805/8M	511000243	RSWPA 4-RKPA 4-805/8M	511000266	RSWPA 4-RKWPA 4-805/8M
511000198	RSPA 4-RKPA 4-805/10M	511000221	RSPA 4-RKWPA 4-805/10M	511000244	RSWPA 4-RKPA 4-805/10M	511000267	RSWPA 4-RKWPA 4-805/10M
511000199	RSPA 4-RKPA 4-805/12M	511000222	RSPA 4-RKWPA 4-805/12M	511000245	RSWPA 4-RKPA 4-805/12M	511000268	RSWPA 4-RKWPA 4-805/12M
511000200	RSPA 4-RKPA 4-805/14M	511000223	RSPA 4-RKWPA 4-805/14M	511000246	RSWPA 4-RKPA 4-805/14M	511000269	RSWPA 4-RKWPA 4-805/14M
511000201	RSPA 4-RKPA 4-805/15M	511000224	RSPA 4-RKWPA 4-805/15M	511000247	RSWPA 4-RKPA 4-805/15M	511000270	RSWPA 4-RKWPA 4-805/15M
511000202	RSPA 4-RKPA 4-805/18M	511000225	RSPA 4-RKWPA 4-805/18M	511000248	RSWPA 4-RKPA 4-805/18M	511000271	RSWPA 4-RKWPA 4-805/18M
511000203	RSPA 4-RKPA 4-805/20M	511000226	RSPA 4-RKWPA 4-805/20M	511000249	RSWPA 4-RKPA 4-805/20M	511000272	RSWPA 4-RKWPA 4-805/20M
511000204	RSPA 4-RKPA 4-805/22M	511000227	RSPA 4-RKWPA 4-805/22M	511000250	RSWPA 4-RKPA 4-805/22M	511000273	RSWPA 4-RKWPA 4-805/22M
511000205	RSPA 4-RKPA 4-805/25M	511000228	RSPA 4-RKWPA 4-805/25M	511000251	RSWPA 4-RKPA 4-805/25M	511000274	RSWPA 4-RKWPA 4-805/25M
511000206	RSPA 4-RKPA 4-805/30M	511000229	RSPA 4-RKWPA 4-805/30M	511000252	RSWPA 4-RKPA 4-805/30M	511000275	RSWPA 4-RKWPA 4-805/30M
511000207	RSPA 4-RKPA 4-805/35M	511000230	RSPA 4-RKWPA 4-805/35M	511000253	RSWPA 4-RKPA 4-805/35M	511000276	RSWPA 4-RKWPA 4-805/35M
511000208	RSPA 4-RKPA 4-805/40M	511000231	RSPA 4-RKWPA 4-805/40M	511000254	RSWPA 4-RKPA 4-805/40M	511000277	RSWPA 4-RKWPA 4-805/40M
511000209	RSPA 4-RKPA 4-805/45M	511000232	RSPA 4-RKWPA 4-805/45M	511000255	RSWPA 4-RKPA 4-805/45M	511000278	RSWPA 4-RKWPA 4-805/45M
511000210	RSPA 4-RKPA 4-805/50M	511000233	RSPA 4-RKWPA 4-805/50M	511000256	RSWPA 4-RKPA 4-805/50M	511000279	RSWPA 4-RKWPA 4-805/50M

Materials				Electrical		Mechanical		Cable			
Molded Body	Coupling Nut	Contacts	Insert	Current Rating	Voltage Rating	Temperature Rating	Protection Rating	Cable Jacket	Cable O.D.	Conductors	UL Recognition
PVC, black	CuZn / Ni	CuSn alloy / gold over Ni plated	PVC / nylon	15A	600V	-30°C (-86°F) / +90°C (194°F)	NEMA 6P-IP68, IP67	TPE, black	.390"	14AWG	TC-ER, 2237

A-Size Mini, 7/8" Mini, 3-Pole, 14 AWG TC-ER Rated Cable, Single-ended Cordset

Male Straight		Male 90°		Female Straight		Female 90°	
Part No.	Description	Part No.	Description	Part No.	Description	Part No.	Description
511000672	RSPA 3-802/0.5M	511000695	RSWPA 3-802/0.5M	511000718	RKPA 3-802/0.5M	511000741	RKWPA 3-802/0.5M
511000673	RSPA 3-802/1M	511000696	RSWPA 3-802/1M	511000719	RKPA 3-802/1M	511000742	RKWPA 3-802/1M
511000674	RSPA 3-802/1.5M	511000697	RSWPA 3-802/1.5M	511000720	RKPA 3-802/1.5M	511000743	RKWPA 3-802/1.5M
511000675	RSPA 3-802/2M	511000698	RSWPA 3-802/2M	511000721	RKPA 3-802/2M	511000744	RKWPA 3-802/2M
511000676	RSPA 3-802/2.5M	511000699	RSWPA 3-802/2.5M	511000722	RKPA 3-802/2.5M	511000745	RKWPA 3-802/2.5M
511000677	RSPA 3-802/3M	511000700	RSWPA 3-802/3M	511000723	RKPA 3-802/3M	511000746	RKWPA 3-802/3M
511000678	RSPA 3-802/4M	511000701	RSWPA 3-802/4M	511000724	RKPA 3-802/4M	511000747	RKWPA 3-802/4M
511000679	RSPA 3-802/5M	511000702	RSWPA 3-802/5M	511000725	RKPA 3-802/5M	511000748	RKWPA 3-802/5M
511000680	RSPA 3-802/6M	511000703	RSWPA 3-802/6M	511000726	RKPA 3-802/6M	511000749	RKWPA 3-802/6M
511000681	RSPA 3-802/8M	511000704	RSWPA 3-802/8M	511000727	RKPA 3-802/8M	511000750	RKWPA 3-802/8M
511000682	RSPA 3-802/10M	511000705	RSWPA 3-802/10M	511000728	RKPA 3-802/10M	511000751	RKWPA 3-802/10M
511000683	RSPA 3-802/12M	511000706	RSWPA 3-802/12M	511000729	RKPA 3-802/12M	511000752	RKWPA 3-802/12M
511000684	RSPA 3-802/14M	511000707	RSWPA 3-802/14M	511000730	RKPA 3-802/14M	511000753	RKWPA 3-802/14M
511000685	RSPA 3-802/15M	511000708	RSWPA 3-802/15M	511000731	RKPA 3-802/15M	511000754	RKWPA 3-802/15M
511000686	RSPA 3-802/18M	511000709	RSWPA 3-802/18M	511000732	RKPA 3-802/18M	511000755	RKWPA 3-802/18M
511000687	RSPA 3-802/20M	511000710	RSWPA 3-802/20M	511000733	RKPA 3-802/20M	511000756	RKWPA 3-802/20M
511000688	RSPA 3-802/22M	511000711	RSWPA 3-802/22M	511000734	RKPA 3-802/22M	511000757	RKWPA 3-802/22M
511000689	RSPA 3-802/25M	511000712	RSWPA 3-802/25M	511000735	RKPA 3-802/25M	511000758	RKWPA 3-802/25M
511000690	RSPA 3-802/30M	511000713	RSWPA 3-802/30M	511000736	RKPA 3-802/30M	511000759	RKWPA 3-802/30M
511000691	RSPA 3-802/35M	511000714	RSWPA 3-802/35M	511000737	RKPA 3-802/35M	511000760	RKWPA 3-802/35M
511000692	RSPA 3-802/40M	511000715	RSWPA 3-802/40M	511000738	RKPA 3-802/40M	511000761	RKWPA 3-802/40M
511000693	RSPA 3-802/45M	511000716	RSWPA 3-802/45M	511000739	RKPA 3-802/45M	511000762	RKWPA 3-802/45M
511000694	RSPA 3-802/50M	511000717	RSWPA 3-802/50M	511000740	RKPA 3-802/50M	511000763	RKWPA 3-802/50M

Materials				Electrical		Mechanical		Cable			
Molded Body	Coupling Nut	Contacts	Insert	Current Rating	Voltage Rating	Temperature Rating	Protection Rating	Cable Jacket	Cable O.D.	Conductors	UL Recognition
PVC, black	CuZn / Ni	CuSn alloy / gold over Ni plated	PVC / nylon	18A	600V	-30°C (-86°F) / +90°C (194°F)	NEMA 6P-IP68, IP67	TPE, black	.359"	14AWG, Stranded Bare Copper	TC-ER, 2237

A-Size 7/8" Mini, 4-Pole, 14 AWG TC-ER Rated Cable, Single-ended Cordset

Male Straight		Male 90°		Female Straight		Female 90°	
Part No.	Description	Part No.	Description	Part No.	Description	Part No.	Description
511000280	RSPA 4-805/0.5M	511000303	RSWPA 4-805/0.5M	511000326	RKPA 4-805/0.5M	511000349	RKWPA 4-805/0.5M
511000281	RSPA 4-805/1M	511000304	RSWPA 4-805/1M	511000327	RKPA 4-805/1M	511000350	RKWPA 4-805/1M
511000282	RSPA 4-805/1.5M	511000305	RSWPA 4-805/1.5M	511000328	RKPA 4-805/1.5M	511000351	RKWPA 4-805/1.5M
511000283	RSPA 4-805/2M	511000306	RSWPA 4-805/2M	511000329	RKPA 4-805/2M	511000352	RKWPA 4-805/2M
511000284	RSPA 4-805/2.5M	511000307	RSWPA 4-805/2.5M	511000330	RKPA 4-805/2.5M	511000353	RKWPA 4-805/2.5M
511000285	RSPA 4-805/3M	511000308	RSWPA 4-805/3M	511000331	RKPA 4-805/3M	511000354	RKWPA 4-805/3M
511000286	RSPA 4-805/4M	511000309	RSWPA 4-805/4M	511000332	RKPA 4-805/4M	511000355	RKWPA 4-805/4M
511000287	RSPA 4-805/5M	511000310	RSWPA 4-805/5M	511000333	RKPA 4-805/5M	511000356	RKWPA 4-805/5M
511000288	RSPA 4-805/6M	511000311	RSWPA 4-805/6M	511000334	RKPA 4-805/6M	511000357	RKWPA 4-805/6M
511000289	RSPA 4-805/8M	511000312	RSWPA 4-805/8M	511000335	RKPA 4-805/8M	511000358	RKWPA 4-805/8M
511000290	RSPA 4-805/10M	511000313	RSWPA 4-805/10M	511000336	RKPA 4-805/10M	511000359	RKWPA 4-805/10M
511000291	RSPA 4-805/12M	511000314	RSWPA 4-805/12M	511000337	RKPA 4-805/12M	511000360	RKWPA 4-805/12M
511000292	RSPA 4-805/14M	511000315	RSWPA 4-805/14M	511000338	RKPA 4-805/14M	511000361	RKWPA 4-805/14M
511000293	RSPA 4-805/15M	511000316	RSWPA 4-805/15M	511000339	RKPA 4-805/15M	511000362	RKWPA 4-805/15M
511000294	RSPA 4-805/18M	511000317	RSWPA 4-805/18M	511000340	RKPA 4-805/18M	511000363	RKWPA 4-805/18M
511000295	RSPA 4-805/20M	511000318	RSWPA 4-805/20M	511000341	RKPA 4-805/20M	511000364	RKWPA 4-805/20M
511000296	RSPA 4-805/22M	511000319	RSWPA 4-805/22M	511000342	RKPA 4-805/22M	511000365	RKWPA 4-805/22M
511000297	RSPA 4-805/25M	511000320	RSWPA 4-805/25M	511000343	RKPA 4-805/25M	511000366	RKWPA 4-805/25M
511000298	RSPA 4-805/30M	511000321	RSWPA 4-805/30M	511000344	RKPA 4-805/30M	511000367	RKWPA 4-805/30M
511000299	RSPA 4-805/35M	511000322	RSWPA 4-805/35M	511000345	RKPA 4-805/35M	511000368	RKWPA 4-805/35M
511000300	RSPA 4-805/40M	511000323	RSWPA 4-805/40M	511000346	RKPA 4-805/40M	511000369	RKWPA 4-805/40M
511000301	RSPA 4-805/45M	511000324	RSWPA 4-805/45M	511000347	RKPA 4-805/45M	511000370	RKWPA 4-805/45M
511000302	RSPA 4-805/50M	511000325	RSWPA 4-805/50M	511000348	RKPA 4-805/50M	511000371	RKWPA 4-805/50M

Materials				Electrical		Mechanical		Cable			
Molded Body	Coupling Nut	Contacts	Insert	Current Rating	Voltage Rating	Temperature Rating	Protection Rating	Cable Jacket	Cable O.D.	Conductors	UL Recognition
PVC, black	CuZn / Ni	CuSn alloy / gold over Ni plated	PVC / nylon	15A	600V	-30°C (-86°F) / +90°C (194°F)	NEMA 6P-IP68, IP67	TPE, black	.390"	14AWG, Stranded Bare Copper	TC-ER, 2237

D-A Size 1 3/8" Mini Power to 7/8" Mini, 3-Pole, 14AWG TC-ER Rated Cable, Reducing Cordset

Male Straight to Female Straight				Male Straight to Female 90°			
Part No.	Description	Part No.	Description	Part No.	Description	Part No.	Description
511000830	RSP 3-RKPA 3-802/0.5M	511000842	RSP 3-RKPA 3-802/14M	511000853	RSP 3-RKWPA 3-802/0.5M	511000865	RSP 3-RKWPA 3-802/14M
511000831	RSP 3-RKPA 3-802/1M	511000843	RSP 3-RKPA 3-802/15M	511000854	RSP 3-RKWPA 3-802/1M	511000866	RSP 3-RKWPA 3-802/15M
511000832	RSP 3-RKPA 3-802/1.5M	511000844	RSP 3-RKPA 3-802/18M	511000855	RSP 3-RKWPA 3-802/1.5M	511000867	RSP 3-RKWPA 3-802/18M
511000833	RSP 3-RKPA 3-802/2M	511000845	RSP 3-RKPA 3-802/20M	511000856	RSP 3-RKWPA 3-802/2M	511000868	RSP 3-RKWPA 3-802/20M
511000834	RSP 3-RKPA 3-802/2.5M	511000846	RSP 3-RKPA 3-802/22M	511000857	RSP 3-RKWPA 3-802/2.5M	511000869	RSP 3-RKWPA 3-802/22M
511000835	RSP 3-RKPA 3-802/3M	511000847	RSP 3-RKPA 3-802/25M	511000858	RSP 3-RKWPA 3-802/3M	511000870	RSP 3-RKWPA 3-802/25M
511000836	RSP 3-RKPA 3-802/4M	511000848	RSP 3-RKPA 3-802/30M	511000859	RSP 3-RKWPA 3-802/4M	511000871	RSP 3-RKWPA 3-802/30M
511000837	RSP 3-RKPA 3-802/5M	511000849	RSP 3-RKPA 3-802/35M	511000860	RSP 3-RKWPA 3-802/5M	511000872	RSP 3-RKWPA 3-802/35M
511000838	RSP 3-RKPA 3-802/6M	511000850	RSP 3-RKPA 3-802/40M	511000861	RSP 3-RKWPA 3-802/6M	511000873	RSP 3-RKWPA 3-802/40M
511000839	RSP 3-RKPA 3-802/8M	511000851	RSP 3-RKPA 3-802/45M	511000862	RSP 3-RKWPA 3-802/8M	511000874	RSP 3-RKWPA 3-802/45M
511000840	RSP 3-RKPA 3-802/10M	511000852	RSP 3-RKPA 3-802/50M	511000863	RSP 3-RKWPA 3-802/10M	511000875	RSP 3-RKWPA 3-802/50M
511000841	RSP 3-RKPA 3-802/12M			511000864	RSP 3-RKWPA 3-802/12M		

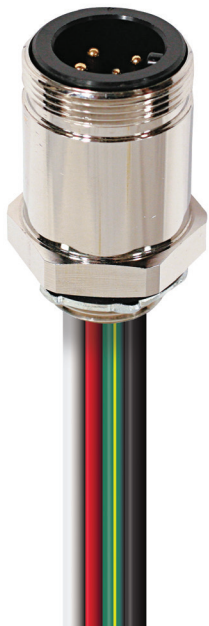
Materials				Electrical		Mechanical		Cable			
Molded Body	Coupling Nut	Contacts	Insert	Current Rating	Voltage Rating	Temperature Rating	Protection Rating	Cable Jacket	Cable O.D.	Conductors	UL Recognition
PVC, black	CuZn / Ni	CuSn alloy / gold over Ni plated	PVC / nylon	18A	600V	-30°C (-86°F) / +90°C (194°F)	NEMA 6P-IP68, IP67	TPE, black	.359"	14AWG	TC-ER, 2237

D-A Size 1 3/8" Mini Power to 7/8" Mini, 4-Pole, 14 AWG TC-ER Rated Cable, Reducing Cordset

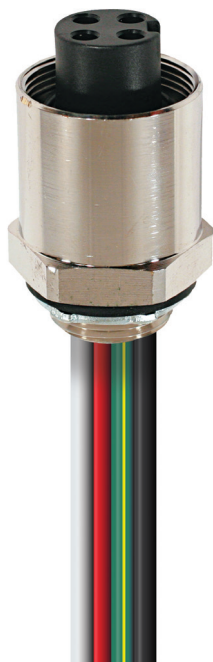
Male Straight to Female Straight				Male Straight to Female 90°			
Part No.	Description	Part No.	Description	Part No.	Description	Part No.	Description
511000784	RSP 4-RKPA 4-805/0.5M	511000796	RSP 4-RKPA 4-805/14M	511000807	RSP 4-RKWPA 4-805/0.5M	511000819	RSP 4-RKWPA 4-805/14M
511000785	RSP 4-RKPA 4-805/1M	511000797	RSP 4-RKPA 4-805/15M	511000808	RSP 4-RKWPA 4-805/1M	511000820	RSP 4-RKWPA 4-805/15M
511000786	RSP 4-RKPA 4-805/1.5M	511000798	RSP 4-RKPA 4-805/18M	511000809	RSP 4-RKWPA 4-805/1.5M	511000821	RSP 4-RKWPA 4-805/18M
511000787	RSP 4-RKPA 4-805/2M	511000799	RSP 4-RKPA 4-805/20M	511000810	RSP 4-RKWPA 4-805/2M	511000822	RSP 4-RKWPA 4-805/20M
511000788	RSP 4-RKPA 4-805/2.5M	511000800	RSP 4-RKPA 4-805/22M	511000811	RSP 4-RKWPA 4-805/2.5M	511000823	RSP 4-RKWPA 4-805/22M
511000789	RSP 4-RKPA 4-805/3M	511000801	RSP 4-RKPA 4-805/25M	511000812	RSP 4-RKWPA 4-805/3M	511000824	RSP 4-RKWPA 4-805/25M
511000790	RSP 4-RKPA 4-805/4M	511000802	RSP 4-RKPA 4-805/30M	511000813	RSP 4-RKWPA 4-805/4M	511000825	RSP 4-RKWPA 4-805/30M
511000791	RSP 4-RKPA 4-805/5M	511000803	RSP 4-RKPA 4-805/35M	511000814	RSP 4-RKWPA 4-805/5M	511000826	RSP 4-RKWPA 4-805/35M
511000792	RSP 4-RKPA 4-805/6M	511000804	RSP 4-RKPA 4-805/40M	511000815	RSP 4-RKWPA 4-805/6M	511000827	RSP 4-RKWPA 4-805/40M
511000793	RSP 4-RKPA 4-805/8M	511000805	RSP 4-RKPA 4-805/45M	511000816	RSP 4-RKWPA 4-805/8M	511000828	RSP 4-RKWPA 4-805/45M
511000794	RSP 4-RKPA 4-805/10M	511000806	RSP 4-RKPA 4-805/50M	511000817	RSP 4-RKWPA 4-805/10M	511000829	RSP 4-RKWPA 4-805/50M
511000795	RSP 4-RKPA 4-805/12M			511000818	RSP 4-RKWPA 4-805/12M		

Materials				Electrical		Mechanical		Cable			
Molded Body	Coupling Nut	Contacts	Insert	Current Rating	Voltage Rating	Temperature Rating	Protection Rating	Cable Jacket	Cable O.D.	Conductors	UL Recognition
PVC, black	CuZn / Ni	CuSn alloy / gold over Ni plated	PVC / nylon	15A	600V	-30°C (-86°F) / +90°C (194°F)	NEMA 6P-IP68, IP67	TPE, black	.390"	14AWG	TC-ER, 2237

D-Size 1 3/8" Mini Power, 10AWG, Receptacle, 1/2" NPT

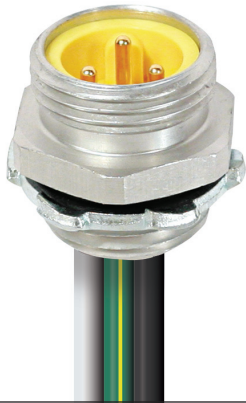


3-Pole, Male				3-Pole, Female			
Part No.	Description			Part No.	Description		
511000775	RSFP 3-1/2NPT-800/0.5M			511000772	RKFP 3-1/2NPT-800/0.5M		
511000776	RSFP 3-1/2NPT-800/1M			511000773	RKFP 3-1/2NPT-800/1M		
511000777	RSFP 3-1/2NPT-800/3M			511000774	RKFP 3-1/2NPT-800/3M		
Materials				Electrical		Mechanical	
Molded Body	Coupling Nut	Contacts	Insert	Current Rating	Voltage Rating	Temperature Rating	Protection Rating
PVC, black	Steel over Zn plated	CuSn alloy / gold over Ni plated	PVC / nylon	42A	600V	-30°C (-86°F) / +90°C (194°F)	NEMA 6P-IP68, IP67
4-Pole, Male				4-Pole, Female			
Part No.	Description			Part No.	Description		
511000387	RSFP 4-1/2NPT-803/0.5M			511000375	RKFP 4-1/2NPT-803/0.5M		
511000388	RSFP 4-1/2NPT-803/1M			511000376	RKFP 4-1/2NPT-803/1M		
511000389	RSFP 4-1/2NPT-803/3M			511000377	RKFP 4-1/2NPT-803/3M		
511000880	RSFP 4-3/4NPT-803/2M			511000881	RKFP 4-3/4NPT-803/2M		
Materials				Electrical		Mechanical	
Molded Body	Coupling Nut	Contacts	Insert	Current Rating	Voltage Rating	Temperature Rating	Protection Rating
PVC, black	Steel over Zn plated	CuSn alloy / gold over Ni plated	PVC / nylon	40A	600V	-30°C (-86°F) / +90°C (194°F)	NEMA 6P-IP68, IP67

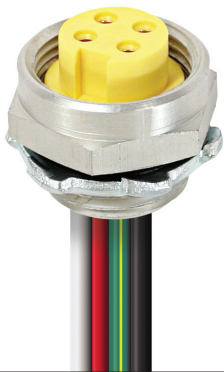


D-Size 1 3/8" Mini Power, 10AWG, Receptacle, 3/4" NPT

3-Pole, Male				3-Pole, Female			
Part No.	Description			Part No.	Description		
511000769	RSFP 3-3/4NPT-800/0.5M			511000766	RKFP 3-3/4NPT-800/0.5M		
511000770	RSFP 3-3/4NPT-800/1M			511000767	RKFP 3-3/4NPT-800/1M		
511000771	RSFP 3-3/4NPT-800/3M			511000768	RKFP 3-3/4NPT-800/3M		
Materials				Electrical		Mechanical	
Molded Body	Coupling Nut	Contacts	Insert	Current Rating	Voltage Rating	Temperature Rating	Protection Rating
PVC, black	Steel over Zn plated	CuSn alloy / gold over Ni plated	PVC / nylon	42A	600V	-30°C (-86°F) / +90°C (194°F)	NEMA 6P-IP68, IP67
4-Pole, Male				4-Pole, Female			
Part No.	Description			Part No.	Description		
511000384	RSFP 4-3/4NPT-803/0.5M			511000372	RKFP 4-3/4NPT-803/0.5M		
511000385	RSFP 4-3/4NPT-803/1M			511000373	RKFP 4-3/4NPT-803/1M		
511000386	RSFP 4-3/4NPT-803/3M			511000374	RKFP 4-3/4NPT-803/3M		
Materials				Electrical		Mechanical	
Molded Body	Coupling Nut	Contacts	Insert	Current Rating	Voltage Rating	Temperature Rating	Protection Rating
PVC, black	Steel over Zn plated	CuSn alloy / gold over Ni plated	PVC / nylon	40A	600V	-30°C (-86°F) / +90°C (194°F)	NEMA 6P-IP68, IP67


A-Size 7/8" Mini Power, 14 AWG, Receptacle, 1/2" NPT

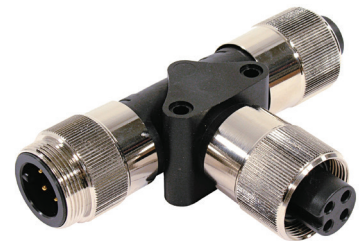
3-Pole, Male				3-Pole, Female			
Part No.	Description			Part No.	Description		
511000778	RSFPA 3-1/2NPT-802/0.5M			511000781	RKFPA 3-1/2NPT-802/0.5M		
511000779	RSFPA 3-1/2NPT-802/1M			511000782	RKFPA 3-1/2NPT-802/1M		
511000780	RSFPA 3-1/2NPT-802/3M			511000783	RKFPA 3-1/2NPT-802/3M		
Materials				Electrical		Mechanical	
Molded Body	Coupling Nut	Contacts	Insert	Current Rating	Voltage Rating	Temperature Rating	Protection Rating
PVC, black	Steel over Zn plated	CuSn alloy / gold over Ni plated	PVC / nylon	18A	600V	-30°C (-86°F) / +90°C (194°F)	NEMA 6P-IP68, IP67



4-Pole, Male				4-Pole, Female			
Part No.	Description			Part No.	Description		
511000378	RSFPA 4-1/2NPT-805/0.5M			511000381	RKFPA 4-1/2NPT-805/0.5M		
511000379	RSFPA 4-1/2NPT-805/1M			511000382	RKFPA 4-1/2NPT-805/1M		
511000380	RSFPA 4-1/2NPT-805/3M			511000383	RKFPA 4-1/2NPT-805/3M		
Materials				Electrical		Mechanical	
Molded Body	Coupling Nut	Contacts	Insert	Current Rating	Voltage Rating	Temperature Rating	Protection Rating
PVC, black	Steel over Zn plated	CuSn alloy / gold over Ni plated	PVC / nylon	15A	600V	-30°C (-86°F) / +90°C (194°F)	NEMA 6P-IP68, IP67

D-Size 1 3/8" Mini Power 3- and 4-Pole, Drop Tee, Male-Female-Female

Part No.	Description	Materials				Electrical		Mechanical	
		Molded Body	Coupling Nut	Contacts	Insert	Current Rating	Voltage Rating	Temperature Rating	Protection Rating
511000764	TAP-P 3	PVC, black	CuZn / Ni	CuSn alloy / gold over Ni plated	PVC, black	42A	600V	-30°C (-86°F) / +90°C (194°F)	NEMA 6P-IP68, IP67
511000001	TAP-P 4					40A			
511000882	TAP-P 3-R					PVC, red			


D-Size 1 3/8" Mini Power to A-Size 7/8" Mini Reducer, 3- and 4-Pole

Part No.	Description	Materials				Electrical		Mechanical	
		Molded Body	Coupling Nut	Contacts	Insert	Current Rating	Voltage Rating	Temperature Rating	Protection Rating
511000003	RSP 4-RKPA 4	PVC, black	CuZn / Ni	CuSn alloy / gold over Ni plated	PVC, nylon	15A	600V	-30°C (-86°F) / +90°C (194°F)	NEMA 6P-IP68, IP67
511000765	RSP 3-RKPA 3					18A			





D-Size 1 3/8" to A-Size 7/8" Mini Power 3- and 4-Pole, Drop Tee, Male-Female-Female

Part No.	Description	Materials				Electrical		Mechanical	
		Molded Body	Coupling Nut	Contacts	Insert	Current Rating	Voltage Rating	Temperature Rating	Protection Rating
511000876	TAP-PA 3	PVC, Black	CuZn/Ni	CuSn alloy/ Gold over Ni plated	PVC, Black	18A	600V	-30°C (-86°F) / +90°C (194°F)	NEMA 6P - IP68, IP67
511000002	TAP-PA 4				PVC, Red	15A			
511000932	TAP-PA 3-R	PVC, Red			PVC, Red	18A			



D-Size 1 3/8" to A-Size 7/8" Mini Power 3- and 4-Pole, Cable Drop Tee, Male-Female-Female

Part No.	Description	Materials				Electrical		Mechanical	
		Molded Body	Coupling Nut	Contacts	Insert	Current Rating	Voltage Rating	Temperature Rating	Protection Rating
511000924	TAP-PA 3-802/0.5M	PVC, Black	CuZn/Ni	CuSn alloy/ Gold over Ni plated	PVC, Black	18A	600V	-30°C (-86°F) / +90°C (194°F)	NEMA 6P - IP68, IP67
511000926	TAP-PA 3-802/1M								
511000928	TAP-PA 3-802/1.5M								
511000930	TAP-PA 3-802/2M								
511000925	TAP-PA 4-805/0.5M								
511000927	TAP-PA 4-805/1M								
511000929	TAP-PA 4-805/1.5M	PVC, Red			PVC, Red	15A			
511000931	TAP-PA 4-805/2M								
511000933	TAP-PA 3-802/0.5M-R								
511000934	TAP-PA 3-802/1M-R								
511000935	TAP-PA 3-802/1.5M-R					18A			
511000936	TAP-PA 3-802/2M-R								



A-Size 7/8" Mini Power 3- and 4-Pole, Drop Tee, Male-Female-Female

Part No.	Description	Materials				Electrical		Mechanical	
		Molded Body	Coupling Nut	Contacts	Insert	Current Rating	Voltage Rating	Temperature Rating	Protection Rating
511000922	TAP-A 3	PVC, Black	CuZn/Ni	CuSn alloy/ Gold over Ni plated	PVC, Black	18A	600V	-30°C (-86°F) / +90°C (194°F)	NEMA 6P - IP68, IP67
511000923	TAP-A 4					15A			

Mini Power Accessories

D-Size 1 3/8" Closure Cap For Male Connector (Internal Threads)

Part No.	Description
511000392	RSV -D



A-Size 7/8" Closure Cap For Male Connector (Internal Threads)

Part No.	Description
511000394	RSV



D-Size 1 3/8" Closure Cap For Female Connector (External Threads)

Part No.	Description
511000393	RKV -D



A-Size 7/8" Closure Cap For Female Connector (External Threads)

Part No.	Description
511000395	RKV



D-Size 1 3/8" Closure Cap For Male Connector (Internal Threads)

Part No.	Description
511000878	RSV-D-CB



D-Size 1 3/8" Locking Shell

Part No.	Description
511000390	DLock



D-Size 1 3/8" Closure Cap For Female Connector (External Threads)

Part No.	Description
511000879	RKV-D-CB



A-Size 7/8" Locking Shell

Part No.	Description
511000391	ALock

