

# Broadcast Trucks

Provide an unforgettable fan experience and boost system reliability with Belden's high-performance, field-proven broadcast solutions



**Be certain.  
Belden.**

Our End-to-End Expertise.  
Your End-to-End Solution.



## Trusted Brand in Audio, Video and Data Infrastructure

Next-generation sports and entertainment experiences increase audience engagement, interaction and enjoyment. High-performance communications take these experiences to the next level, immersing fans in the action. Quality, robust infrastructure is what makes it all happen. Belden's audio, video and data infrastructure solutions support live production, ensuring reliability and flexibility so you can run your operations smoothly and stay ahead of the competition – without worrying about interference or downtime.

### Less Weight, Less Space

We keep the weight and size of our products to a minimum to reduce truck load and costs. For example, Belden's new coaxial cable for broadcast trucks weighs 50% less and takes up 50% less space than standard Mini RG-59/U type cables.

### Reliable and Easy to Install

When copper and fiber connectivity products are designed to work together seamlessly, they inherently reduce downtime. Belden's factory-tested, pre-terminated products provide maximum reliability and decrease installation time.

### 10-Year Product Warranty

From product design to post-installation, Belden stands behind the performance of its audio, video and data infrastructure products with a 10-year warranty (broadcast assemblies are warranted for one year).



### Keeping You Ahead of the Curve

For more than 100 years, Belden has helped shape new industry standards. We ensure that your infrastructure will be well-prepared for technology evolution. Our commitment to innovation is backed by more than 600 patents in connectivity, cable and cable management products that span optical fiber and copper media.

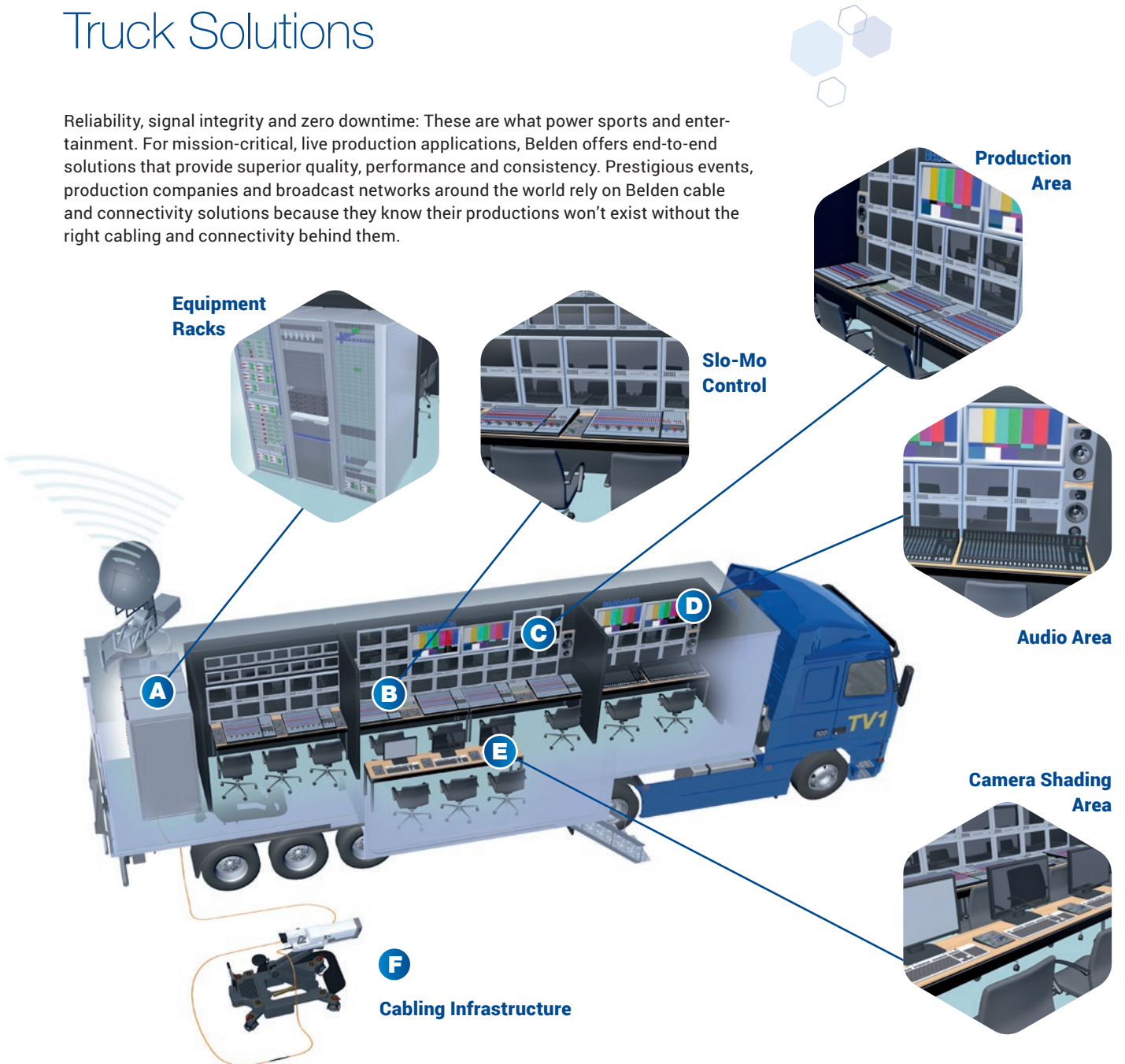
Simplify your audio, video and data infrastructure projects by working with Belden to achieve a complete solution for field operations, broadcast control rooms, commercial AV, digital signage, life safety, data network solutions and more.

Our End-to-End Expertise.  
Your End-to-End Solution.



# End-to-End Broadcast Truck Solutions

Reliability, signal integrity and zero downtime: These are what power sports and entertainment. For mission-critical, live production applications, Belden offers end-to-end solutions that provide superior quality, performance and consistency. Prestigious events, production companies and broadcast networks around the world rely on Belden cable and connectivity solutions because they know their productions won't exist without the right cabling and connectivity behind them.



Description	Video	Audio	Camera	Data Cable	Data System Copper	Data System Fiber	PDU
A: Equipment Racks	✓	✓	✓	✓	✓	✓	✓
B: Slo-Mo Control	✓			✓			✓
C: Production Area	✓	✓	✓	✓			✓
D: Audio Area	✓	✓		✓			✓
E: Camera Shading Area	✓	✓	✓	✓			✓
F: Cabling Infrastructure	✓	✓	✓	✓			

## Video Cables and Connectors

Engineered to meet increasing demands for reliable 4K video transmission, Belden Professional Video Cables are available in three variations. These cables help professional broadcasters achieve excellent picture quality and consistency. Belden Professional Video Cables deliver:

- Beyond-standards performance for longer lengths
- Superior 4K picture quality and consistency
- Speed and ease of installation for labor savings
- Robust construction and headroom for installable performance

### Classics Pro Cables

With a proven, 25-year track record of quality and consistency, broadcasters know their systems will work every time when these video cables are specified. The cables exceed industry standards, with longer lengths possible for 4K delivery:

- Measured at 75 Ohms to 6 GHz for 6 Gb/s, 4K applications
- Better return loss, attenuation and impedance deliver true 4K performance

### Easy Connect Pro Cables

These cables are made with laminated shielding tape and an extra layer of heat-sensitive adhesive that bonds the foil shield to the dielectric core for 100% coverage and superior shield protection against interference. This shield technology is known as Duobond® II:

- Easier, faster cable termination
- Compatibility with Belden one-piece HD compression connectors at both ends to significantly reduce installation time and costs
- Measured at 75 Ohms to 6 GHz for 6 Gb/s, 4K applications

### EMC Pro Cables

Innovative Duobond Plus® technology is featured in these cables. They feature an outer foil layer with a unique shorting fold that provides metal to-metal contact to improve electromagnetic compatibility (EMC) and high frequency performance:

- Noise from external sources is cancelled out by delivering the effects of a solid metal conduit
- Higher frequencies and increased speeds support the latest 4K applications
- Signal egress or ingress is eliminated by preventing slot openings in the shield
- Measured at 75 Ohms to 6 GHz for 6 Gb/s, 4K applications



Our End-to-End Expertise.  
Your End-to-End Solution.



### HD Brilliance BNC Connectors

With the fastest, easiest installation in the broadcast industry, these connectors are available in three platforms and feature durable brass construction. Patented compression rings offer excellent holding force:

- Patent-pending locking design with a screw-lock collar physically “locks” the bayonet nut in position in the one-piece locking HD Brilliance BNC Connector. This delivers superior return loss performance by limiting BNC head movement and creating coaxial alignment from the cable through the BNC center pin.
- Installation is simplified and more efficient with one-piece HD Brilliance BNC Compression Connectors; they eliminate loose pins and sleeves. This allows for repeatable and consistent installation every time while delivering return loss performance on par with time-consuming, traditional three-piece designs.

### BNC Compression Tool

This tool makes it much easier to terminate one-piece compression connectors with video cables:

- Reduced installation time with only one piece and no pins to lose
- Easy to use with less force required
- Color coding that makes it easy to get termination right the first time
- Limited lifetime warranty on cables and connectors



Belden  
Classic Pro Cables



BNC  
Connectors



Belden Easy  
Connect Pro Cables



Belden  
EMC Pro Cables

Video Cables			BNC Connectors		BOOT	Tools	
Type	Part-number	Sheath	1-Piece	1-Piece Locking		Strip	Compression
0.3/1.4	179DT	PVC	179DTBHD1	179DTBHD1	-	LDT-MINI-1	CPLCRBC-BR
0.3/1.4	179DTNH	LSNH	179DTBHD1	179DTBHD1	-	LDT-MINI-1	CPLCRBC-BR
0.4/1.9	70078CH	LSNH	70078CHBHD1	-	SLS-RGB-COLOR	LDT-MINI	CPLCRBC-BR
0.6/2.6	1855A	PVC	1855ABHD1	1855ABHD1	SLS-RGB-COLOR	LDT-MINI	CPLCRBC-BR
0.6/2.8	1855ENH	LSNH	1855ABHD1	1855ABHD1	SLS-RGB-COLOR	LDT-MINI	CPLCRBC-BR
0.6/2.8	70080	PVC	1855ABHD1	1855ABHD1	SLS-RGB-COLOR	LDT-MINI	CPLCRBC-BR
0.6/2.8	70080NH	LSNH	1855ABHD1	1855ABHD1	SLS-RGB-COLOR	LDT-MINI	CPLCRBC-BR
0.6/2.8	1855DNH	LSNH	1855ABHD1	1855ABHD1	SLS-RGB-COLOR	LDT-MINI	CPLCRBC-BR
0.8/3.7	1505A	PVC	1505ABHD1	1505ABHD1	SLS-59/6-COLOR	LDT596-250	CPLCRBC-BR
0.8/3.7	1505ANH	LSNH	1505ABHD1	1505ABHD1	SLS-59/6-COLOR	LDT596-250	CPLCRBC-BR
0.8/3.7	70081	PVC	1505ABHD1	1505ABHD1	SLS-59/6-COLOR	LDT596-250	CPLCRBC-BR
0.8/3.7	70081NH	LSNH	1505ABHD1	1505ABHD1	SLS-59/6-COLOR	LDT596-250	CPLCRBC-BR
0.8/3.7	1505DNH	LSNH	1505ABHD1	1505ABHD1	SLS-59/6-COLOR	LDT596-250	CPLCRBC-BR
0.8/3.7	1505F	PVC	1505ABHD1	1505ABHD1	SLS-59/6-COLOR	LDT596-250	CPLCRBC-BR
1.0/4.6	1694A	PVC	1694ABHD1	1694ABHD1	SLS-59/6-COLOR	LDT596-250	CPLCRBC-BR
1.0/4.6	1694ANH	LSNH	1694ABHD1	1694ABHD1	SLS-59/6-COLOR	LDT596-250	CPLCRBC-BR
1.0/4.6	70082	PVC	1694ABHD1	1694ABHD1	SLS-59/6-COLOR	LDT596-250	CPLCRBC-BR
1.0/4.6	70082NH	LSNH	1694ABHD1	1694ABHD1	SLS-59/6-COLOR	LDT596-250	CPLCRBC-BR
1.0/4.6	1694F	PVC	1694ABHD1	1694ABHD1	SLS-59/6-COLOR	LDT596-250	CPLCRBC-BR
1.0/4.6	1694DNH	LSNH	1694ABHD1	1694ABHD1	SLS-59/6-COLOR	LDT596-250	CPLCRBC-BR

Color: Black, blue, brown, gray, green, orange, purple, red, white, yellow

## Audio Cables



Specially designed for the broadcast industry, Belden's full family of single-pair and multi-pair cables features different options and constructions for virtually every application. Belden meets the diverse needs of any broadcaster with its broad spectrum of innovative audio cable products:

- Beldfoil® Shield, which bonds the foil shield of each pair to the jacket with the drain wire inside the foil. This makes the cable easier to strip. A standard stripping tool removes the insulation and foil, greatly speeding up installation time.
- A halogen-free design meets the most important international standards, such as IEC 60754.
- Spiral screening versions offer maximum flexibility for mobile (semi-permanent) applications.

### AWG 26

Product Description	Part Number	Pair Count	Diameter	Stranding
<b>Foil each Pair and Beldfoil® 100 % Coverage LSNH</b>				
Digital	70051	1 Pair	3.9 mm	7 x 0.15 mm
Digital	70052	2 Pair	8.4 mm	7 x 0.15 mm
Digital	70053	4 Pair	9.8 mm	7 x 0.15 mm
Digital	70054	8 Pair	12.8 mm	7 x 0.15 mm
<b>Spiral Screening Flexible LSNH Overall 90 % Braid</b>				
Digital	YE00193	1 Pair	2.9 mm	18 x 0.1 mm
Digital	BE46959	2 Pair	3.9 mm	18 x 0.1 mm
Digital	BE46925	4 Pair	9.5 mm	18 x 0.1 mm
Digital	BE46935	8 Pair	12.5 mm	18 x 0.1 mm
<b>Spiral Screening Flexible PUR Overall 80 % Braid</b>				
Analog	70022EPU	1 Pair	4.8 mm	18 x 0.1 mm
Analog	70023EPU	2 Pair	6.3 mm	18 x 0.1 mm
Analog	70024EPU	4 Pair	7.0 mm	18 x 0.1 mm
Analog	70025EPU	8 Pair	9.0 mm	18 x 0.1 mm
Analog	70026EPU	12 Pair	10.3 mm	18 x 0.1 mm

### AWG 24

Product Description	Part Number	Pair Count	Diameter	Stranding
<b>Foil each Pair and Beldfoil® 100 % Coverage LSNH</b>				
Digital	70049	1 Pair	5.0 mm	7 x 0.20 mm
Digital	70057	2 Pair	9.4 mm	7 x 0.20 mm
Digital	70058	4 Pair	11.0 mm	7 x 0.20 mm
Digital	70059	8 Pair	14.5 mm	7 x 0.20 mm
<b>Spiral Screening Flexible PVC</b>				
Digital, Superflex	1800F	1 Pair	5.36 mm	42 x 0.08 mm
Digital	70077	1 Pair	6.5 mm	7 x 0.20 mm



Our End-to-End Expertise.  
Your End-to-End Solution.



## Camera Cables

### Triaxial Cables

Triaxial (triax) cables provide greater bandwidth and reject more interference than coaxial cable, and allow a small cable (14 mm or less) to run multiple signals. They contain two isolated shields and a solid or stranded center conductor. Isolated shields allow the triax to provide multiple functions over one cable through multiplexing techniques.

The outer diameter of the triaxial cable describes size and distance:

- Triax 8 for short runs
- Triax 11 for long runs
- Triax 14 for very long runs

### Fiber Optic Camera Cables

Belden Tactical Fiber Optic cables are designed and constructed to facilitate fast, easy field deployment. They are made with extremely strong, rugged, and survivable tight-buffered single-mode fiber for maximum performance and reliability.

- Ideal for low temperature applications: the improved micro and macro bending of bend insensitive fiber boosts the performance of cables at temperatures as low as -70 °C.
- Superior bend performance: these cables display very low bending loss across the full usable spectrum of wavelengths from 1260 to 1625 nm.
- Zero Water Peak (ZWP): these cables feature the first fiber to eliminate the water peak defect found in conventional single-mode fiber.
- Splicing compatibility: ITU G.657A fiber ensures seamless splicing to existing standard G.652 fibers to help reduce installation time.
- GMRT versions include a layer of fiberglass yarn that provides an effective deterrent to damage caused by non-burrowing rodents.

### SMPTE 311 HD Camera Assemblies

Designed specifically for high-definition cameras, Belden's hybrid fiber SMPTE311 HD Camera Assemblies are ideal for field camera applications that require multiplex audio/video signals and power. All cables feature heat-resistant PE insulation for more dependable performance in high-temperature environments. They meet all SMPTE 311 requirements and are compatible with industry-standard SMPTE 304M connectors.

### TRIAX Cable

Description	Part Number
TRIAX 8, PVC, silvered, stranded, 750 m	7783AF
TRIAX 8, PUR, silvered, stranded, 750 m	7783AFP
TRIAX 11, PVC, silvered, stranded, 1000 m	7784AF
TRIAX 11, PUR, silvered, stranded, 1000 m	7784AFP
TRIAX 14, PVC, silvered, stranded, 1400 m	7785A
TRIAX 14, PVC, full copper, stranded, 1400 m	7785E

### Tactical Fiber Cable

Fiber Count	OM3 BI <sup>1</sup>	OM4 BI <sup>1</sup>	OS2 BI <sup>1</sup>
<b>Tactical Fiber Cable</b>			
2	GMTTD02	GMTTE02	GMTTA02
4	GMTTD04	GMTTE04	GMTTA04
8	GMTTD08	GMTTE08	GMTTA08
12	GMTTD12	GMTTE12	GMTTA12
<b>Tactical Fiber Cable, Ruggedized</b>			
2	GMRTD02	GMRTE02	GMRTA02
4	GMRTD04	GMRTE04	GMRTA04
8	GMRTD08	GMRTE08	GMRTA08
12	GMRTD12	GMRTE12	GMRTA12

<sup>1</sup> BI: Bend Insensitive fiber

Note: more info in Belden® Optical Fiber Cable Catalog

### SMPTE 311 Cable Assemblies

Assembly / CCU	Connector Type	Cable Type	Jacket Material
<b>Internal OB Van Cable Assembly</b>			
CA00276	FMW/PUW	7804E	PVC
CA00321	FMW/PUW	7804ECH	LSZH
CA00281	FMW/PUW	7804EPU	PUR
<b>Outside Broadcast Cable Assembly, with Gaitors / Camera</b>			
CA00272	FUW/PUW	7804E	PVC
CA00311	FUW/PUW	7804ECH	LSZH
CA00283	FUW/PUW	7804EPU	PUR

Note: all lengths available

## Data Cables and Connectors

### Cables

Belden cables support high-speed, high-bandwidth data communications networks, VoIP, multimedia and professional broadcast systems. Category 6A cables deliver performance that goes beyond the ANSI/TIA 568-C.2 Category 6A standard, providing a data rate of 10 Gb/s.

- 100% coverage foil shield protects data from harsh EMI environments
- Inner and outer jacket sandwiches foil and creates a smooth surface to eliminate adverse power-sum near-end crosstalk (PSNEXT) and return loss (RL) effects
- Stranded and solid versions meet any flexibility and performance needs
- Small-diameter copper cables reduce weight and space requirements
- Easy-to-separate pairs reduce installation time by requiring fewer twists

### Connectors

An accessible, easy-to-use solution to terminate twisted-pair cable and cable for security, audio/video and broadcast applications requiring field installation, Belden's RJ45 Category 6+/6A and Category 5e modular plugs are designed for Belden category cable to optimize performance.

### Assemblies

Belden's high-performance shielded CatSnake Category 6A cables are available as pre-terminated assemblies for faster, more reliable deployments in tactical field and studio audio/data installations.

- Individually shielded pairs using Beldfoil® aluminum/polyester foil and an overall braided shield
- Factory terminated with Belden MX101598 Ruggedized RJ45 or Neutrik etherCON NE8MX6 connectors
- Tested to deliver superior performance while enabling faster installation
- Available on Schill drum



### REV Connect

Belden's REVConnect is a brand new RJ45 connectivity system. A single Reliable and Easy termination method that offers unparalleled Versatility; it covers jack and plug, shielded or unshielded, Category 5e through Category 6A.

The termination of the REVConnect core is a simple, straightforward process that requires no pair separation! This means, both bonded and non-bonded cables terminate in the same amount of time. On top of that, the single core termination is all the installer needs to know in order to terminate eight different modules.



Our End-to-End Expertise.  
Your End-to-End Solution.



### Data Cable

Description	Part Number	Jacket
<b>F/UTP</b>		
CAT6A; 7.2 mm, solid core	10GXE00	LSNH
CAT5E Flex, stranded conductors; 6.0 mm	1868E	PVC
<b>U/UTP</b>		
CAT5 Installation; 6.0 mm	1633E	PVC
<b>S/FTP</b>		
CAT7 Flex, stranded conductors; 6.1 mm	YE04207	LSNH
CAT7 Flex, stranded conductors; 6.1 mm	YE04116	PUR with -40 °C
CAT6A Catsnake, stranded conductors; 7.9 mm	1302E	PVC

### Data Connectors

Description	Part Number	Jacket
<b>UTP</b>		
CAT5E/6 Field crimped plug	C6PFCU-B25	-
CAT6/6A Field crimped plug	CAPFCU-B25	-
<b>Shielded</b>		
CAT5E Field crimped plug	C5PFCF-B25	-
CAT6/6A Field crimped plug	CAPFCF-B25	-
Crimp tool	CTPFC01	-

### Ruggedized Data Connectors

Description	Part Number	Jacket
DataTuff® Industrial Ethernet Ruggedized Plug Kit T568A Cat 6A AWG 22-24 UTP/STP IP20	R301601/MX101598	-
DataTuff® Industrial Ethernet Ruggedized Plug Kit T568B Cat 6A AWG 22-24 UTP/STP IP20	R301602/MX101598	-

### Preterm Catsnake Cat6A

Description	Part Number	Jacket
1302E/1303E/1303EPU Assemblies with Neutrik® NE8MX6	CA00238 – CA00243	-
1302E/1303E/1303EPU Assemblies with Belden® MX101598	CA00244 – CA00249	-

Description	Part Number
<b>REV-Connect</b>	
Termination Tool	RVUTTS1
Core	RVUCOEW-B50



Data Cables



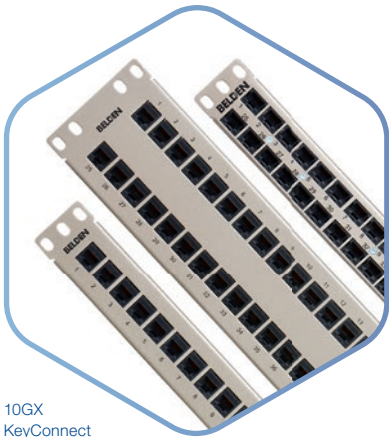
Crimp tool  
CTPFC01



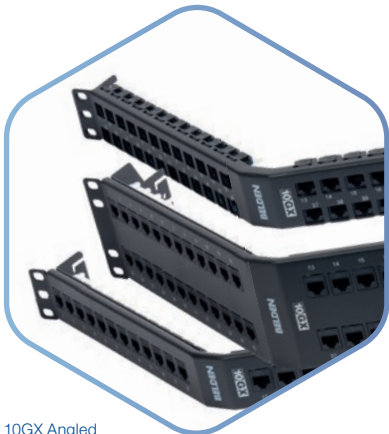
REVConnect  
products

## Copper Systems

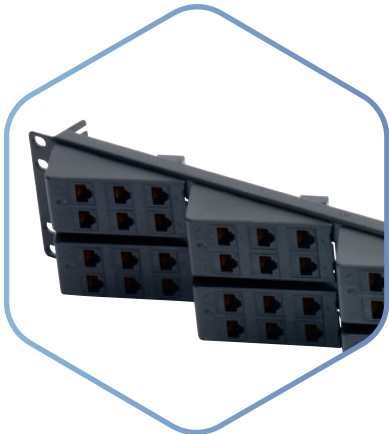
Designed with innovative technologies that provide beyond-standards performance, Belden UTP and STP copper systems reduce downtime and make deployment easier.



10GX  
KeyConnect  
Patch Panels



10GX Angled  
KeyConnect  
Patch Panels



10GX AngleFlex  
Patch Panel, 2U,  
48-port, Black

### Category 6A UTP Connectivity

KeyConnect modular UTP, fiber and coax modules snap easily into KeyConnect faceplates and boxes to suit any voice, data, video or multimedia application, including Belden 10GX, fiber-to-the-desk and high-definition video.

- Optimum performance, density and durability
- Easily removed with the release tool for reconfiguration

KeyConnect Patch Panels are robust, all-metal modular patch panels that provide a flexible, versatile and high-density termination solution for data centers and telecommunications rooms. Modular KeyConnect Patch Panels are available in the following configurations:

- 24-port/1U
- 48-port/2U
- 48-port/1U

The 10GX Modular Cord design is based on a patent-pending plug management bar that allows for excellent control of the internal plug near-end crosstalk (NEXT). The 10GX Modular Cords are 4-pair 24 AWG UTP and designed for use with the Belden 10GX system.

- Bonded-Pair patch cable design offers excellent alien crosstalk performance while maintaining mechanical characteristics, such as flexibility
- Very small footprint makes it fully compatible with the highest-density hubs that utilize RJ45 jack connections

### Category 6A STP Connectivity

Designed around the same patent-pending plug management bar design as the UTP Modular Cords, Category 6A STP Modular Cords allow for excellent control of the internal plug NEXT.

- Unmatched performance exceeds all parameters specified in the Category 6A standard
- Guaranteed transmission performance up to 625 MHz

Like the KeyConnect Patch Panels, KeyConnect Shielded Patch Panels are robust, all-metal modular patch panels that provide a flexible, versatile and high-density termination solution for data centers and telecommunications rooms.

- Available in 24-port/1U and 48-port/2U configurations
- Ground wire and cable management brackets guarantee shielding integrity (per ANSI/TIA-607-B) and neat cable dressing
- Configured using 10GX Shielded Modular Jacks or any other KeyConnect modules

Our End-to-End Expertise.  
Your End-to-End Solution.



## 10GX (Category 6A Unshielded LAN)

### Keyconnect Modular Jacks

Jacket Color	Part Number
White	AX102282
Black	AX102283
Red	AX104153
Blue	AX104156
Purple	AX104157

### KeyConnect PatchPanel

Description	Part Number FLAT	Part Number ANGLED
Preloaded jacks, 48-Port, 1U"	AX103264	AX105365
Preloaded jacks, 24-Port, 1U"	AX103254	AX105363
Preloaded jacks, 48-Port, 2U"	AX103256	AX105364
Preloaded coupler, 48-Port, 1U"	AX104592	AX105348
Preloaded coupler, 24-Port, 1U"	AX104141	AX105300
Preloaded coupler, 48-Port, 2U"	AX104142	AX105301

### Patch Cords LSZH

Length (m)	Red	Orange	Yellow	Green	Blue	Purple	Grey	White	Black
0.5	CA241020D5M	CA241030D5M	CA241040D5M	CA241050D5M	CA241060D5M	CA241070D5M	CA241080D5M	CA241090D5M	CA241000D5M
1	CA24102001M	CA24103001M	CA24104001M	CA24105001M	CA24106001M	CA24107001M	CA24108001M	CA24109001M	CA24100001M
2	CA24102002M	CA24103002M	CA24104002M	CA24105002M	CA24106002M	CA24107002M	CA24108002M	CA24109002M	CA24100002M
3	CA24102003M	CA24103003M	CA24104003M	CA24105003M	CA24106003M	CA24107003M	CA24108003M	CA24109003M	CA24100003M
5	CA24102005M	CA24103005M	CA24104005M	CA24105005M	CA24106005M	CA24107005M	CA24108005M	CA24109005M	CA24100005M
10	CA24102010M	CA24103010M	CA24104010M	CA24105010M	CA24106010M	CA24107010M	CA24108010M	CA24109010M	CA24100010M

### Category 6A Horizontal Cable

Description	Jacket	Part Number
U/UTP	PVC	10GX12
U/UTP	LSZH	10GX24



## 10GX (Category 6A LAN) Shielded

### Keyconnect Modular Jacks

Material	Part Number
Metallic	AX104562

### KeyConnect PatchPanel

Description	Part Number FLAT	Part Number ANGLED
Empty, 24-Port, 1U"	AX106902	AX106812
Empty, 48-Port, 2U"	AX106911	AX104623

### Keyconnect Coupler

Metallic	AX104501
----------	----------

### Patch Cords

Length (m)	Red	Orange	Yellow	Green	Blue	Purple	Grey	White	Black
0.5	CAE41020D5M	CAE41030D5M	CAE41040D5M	CAE41050D5M	CAE41060D5M	CAE41070D5M	CAE41080D5M	CAE41090D5M	CAE41000D5M
1	CAE4102001M	CAE4103001M	CAE4104001M	CAE4105001M	CAE4106001M	CAE4107001M	CAE4108001M	CAE4109001M	CAE4100001M
2	CAE4102002M	CAE4103002M	CAE4104002M	CAE4105002M	CAE4106002M	CAE4107002M	CAE4108002M	CAE4109002M	CAE4100002M
3	CAE4102003M	CAE4103003M	CAE4104003M	CAE4105003M	CAE4106003M	CAE4107003M	CAE4108003M	CAE4109003M	CAE4100003M
5	CAE4102005M	CAE4103005M	CAE4104005M	CAE4105005M	CAE4106005M	CAE4107005M	CAE4108005M	CAE4109005M	CAE4100005M
10	CAE4102010M	CAE4103010M	CAE4104010M	CAE4105010M	CAE4106010M	CAE4107010M	CAE4108010M	CAE4109010M	CAE4100010M

### Category 6A Horizontal Cable

Description	Jacket	Part Number
F/UTP	LSZH	10GXE00
F/FTP	LSZH	10GXE01
S/FTP	LSZH	10GXE02

All indicated lengths are standard lengths.  
Customized lengths are available upon request.

## Fiber Systems

We create fiber products that are faster to use, easier to use and better to use. Belden fiber connectivity solutions reduce complexity, increase flexibility and streamline installation.

### The *FiberExpress@EASE* Panels

With simple in-rack management and a choice of panels with pre-loaded fiber couplers for quick and easy fiber management, *FiberExpress@EASE* offers a high quality, cost-effective solution for a range of installations. It sets a new standard in fiber patch panels.

A coupler management bar incorporated into each SC and LC *FiberExpress@EASE* unit enables the coupler to sit flush on the front face of the panel. This creates a greater bend radius and a better fit for patch cords within a standard rack for more compact, flexible installations.

Designed and manufactured in the UK, *FiberExpress@EASE* provides the high quality you expect from Belden, combined with space-saving technology to offer improved installation time. A fast return on investment (ROI) is possible thanks to:

- Simple 1U footprint
- Easier in-rack management
- A choice of pre-loaded couplers ready for installation
- Multiple splice tray options, including *FiberExpress Ultra*, *FiberExpress* and most basic splice tools

### *FiberExpress* Pre-Terminated Assemblies

Uncomplicated, robust, versatile and conveniently available, *FiberExpress* patch cords deliver a robust design that withstands the rigours of daily use in standard configurations and rapid custom-tailored installations:

- Faster delivery with off-the shelf availability of standard items
- Faster identification of fiber type with Erika Violet for OM4 cable and connectors
- Easier installation in dense cable trays with small-diameter cords
- Easier ordering with simple, intelligent SmartPart Numbers
- Easier polarity management with industry-leading, easy-to-use duplex clips
- Better architectural flexibility with low-loss OM4 0.2 dB MPO and 0.15 dB LC connectors
- Better ruggedization with larger-diameter cord options
- Better flexibility with multiple connector options, including LC, SC, ST and MPO
- Better quality through exhaustive design validation against ANSI/TIA standards

For a complete Belden fiber cable guide, please refer to the Belden Optical Fiber Cables catalog.



Our End-to-End Expertise.  
Your End-to-End Solution.



### FX Patch Cords

Length (m)	OM1 Beige/Orange	OM3/OM4 Aqua	OM4 Erika Violet	OS2 Blue/Yellow	OS2/APC Green/Yellow
<b>MPO-12(12f) Female to MPO-12(12f) Female - Base12</b>					
2	–	FP3MFMF002M	FP4MFMF002M	–	FPSMFMF002M
3	–	FP3MFMF003M	FP4MFMF003M	–	FPSMFMF003M
5	–	FP3MFMF005M	FP4MFMF005M	–	FPSMFMF005M
<b>LC Duplex to LC Duplex</b>					
2	FP1LDLD002M	FP3LDLD002M	FP4LDLD002M	FPSLDLD002M	FPSLALA002M
3	FP1LDLD003M	FP3LDLD003M	FP4LDLD003M	FPSLDLD003M	FPSLALA003M
5	FP1LDLD005M	FP3LDLD005M	FP4LDLD005M	FPSLDLD005M	FPSLALA005M
<b>SC Duplex to SC Duplex</b>					
2	FP1SDSD002M	FP3SDSD002M	FP4SDSD002M	FPSSDSD002M	FPSLALA002M
3	FP1SDSD003M	FP3SDSD003M	FP4SDSD003M	FPSSDSD003M	FPSLALA003M
5	FP1SDSD005M	FP3SDSD005M	FP4SDSD005M	FPSSDSD005M	FPSLALA005M
<b>ST Duplex to ST Duplex</b>					
2	FP1STST002M	FP3STST002M	FP4STST002M	FPSSTST002M	FPSLALA002M
3	FP1STST003M	FP3STST003M	FP4STST003M	FPSSTST003M	FPSLALA003M
5	FP1STST005M	FP3STST005M	FP4STST005M	FPSSTST005M	FPSLALA005M



Note: more info in Belden® Optical Fiber Catalog

### Fiber Cables

Fiber Count	OM1	OM2	OM3	OM4	OS2
<b>Indoor Distribution Cable</b>					
4	GIMT104	GIMT204	GIMTD04	GIMTE04	GIMTA04
8	GIMT108	GIMT208	GIMTD08	GIMTE08	GIMTA08
12	GIMT112	GIMT212	GIMTD12	GIMTE12	GIMTA12
<b>Indoor/Outdoor Loose Tube Cable</b>					
4	GUSN104	GUSN204	GUSND04	GUSNE04	GUSN804
8	GUSN108	GUSN208	GUSND08	GUSNE08	GUSN808
12	GUSN112	GUSN212	GUSND12	GUSNE12	GUSN812

Note: more info in Belden® Optical Fiber Cable Catalog



## Power Distribution Units

Achieve maximum data center uptime while saving money with standard and non-standard Belden Power Distribution Units (PDUs), which improve energy efficiency and system reliability. Fitted with multiple outlets, Belden PDUs distribute electric power to racks of computers and networking equipment. They deliver basic, reliable power distribution and, when required, provide intelligent management for mission-critical applications.



PDUs with intelligent monitoring allow local or remote viewing and alarms for problems at the outlet, breaker, circuit and aggregate level. Seeing current and/or power usage feedback in an instant minimizes the chances of overloading a PDU when adding, removing or adjusting equipment.

- Fully complement Belden networking products
- Compatible with Belden IBDN connectivity products and solutions
- Superior performance when used as part of a fully integrated Belden IBDN solution, where components are designed to work together

Product Description	Part Number	Number of Outlets	Power Supply	Inlet Plug	Mounting Style	Receptacle 1	Receptacle 2	Cord Style	Circuit Breaker	Color
<b>Basic PDU</b>	EP101001 PDU-3044	8	16 A, 230 V, 1 Phase	P+N+E (1 Phase), Blue	Horizontal/ Vertical	8 x IEC 320 C13	N/A	3m with P+N+E	N/A	Black
<b>Basic PDU with Local Unit Level Power Monitoring</b>	EP102001 PDU-2774	30	16 A, 230 V, 1 Phase	P+N+E (1 Phase), Blue	Vertical	24 x IEC 320 C13	6 x IEC 320 C19	3m with P+N+E	N/A	Black
	EP102002 PDU-2868	8	16 A, 230 V, 1 Phase	P+N+E (1 Phase), Blue	Horizontal/ Vertical	8 x IEC 320 C13	N/A	3m with P+N+E	N/A	Black
	EP102003 PDU-2643	30	32 A, 230 V, 1 Phase	P+N+E (1 Phase), Blue	Vertical	24 x IEC 320 C13	6 x IEC 320 C19	3m with P+N+E	Yes	Black
<b>Intelligent PDU with Local &amp; Remote Unit Level Current Monitoring</b>	EP103001 PDU-11630	30	16 A, 230 V, 1 Phase	P+N+E (1 Phase), Blue	Vertical	24 x IEC 320 C13	6 x IEC 320 C19	3m with P+N+E	N/A	Black
	EP103002 PDU-11325	30	16 A, 230 V, 1 Phase	P+N+E (1 Phase), Blue	Vertical	24 x IEC 320 C13	6 x IEC 320 C19	3m with P+N+E	Yes	Black
	EP103003 PDU-11316	42	32 A, 230 V, 1 Phase	P+N+E (1 Phase), Blue	Vertical	36 x IEC 320 C13	6 x IEC 320 C19	3m with P+N+E	Yes	Black
	EP103004 PDU-11216	30	16 A, 230 V, 1 Phase	3P+N+E (3 Phase), Blue	Vertical	24 x IEC 320 C13	6 x IEC 320 C19	3m with 3P+N+E	N/A	Black
	EP103006 PDU-11016	30	32 A, 230 V, 1 Phase	3P+N+E (3 Phase), Blue	Vertical	24 x IEC 320 C13	6 x IEC 320 C19	3m with 3P+N+E	Yes	Black

Our End-to-End Expertise.  
Your End-to-End Solution.



Belden's broad range of cable and connectivity solutions for broadcast trucks offer maximum reliability, flexibility and versatility.



## GLOBAL LOCATIONS

For more information, please visit us at:  
[www.beldensolutions.com](http://www.beldensolutions.com)



Be certain  
you stay  
in touch.

### EUROPE/MIDDLE EAST/AFRICA

#### Germany

Phone: +49-7127-14-0  
[inet-sales@belden.com](mailto:inet-sales@belden.com)

#### France

Phone: +33-472-109-990  
[lyon.salesinfo@belden.com](mailto:lyon.salesinfo@belden.com)

#### Italy

Phone: +39-039-5965-250  
[info.milano@belden.com](mailto:info.milano@belden.com)

#### Russia

Phone: +7-495-787-06-55  
[info@belden.ru](mailto:info@belden.ru)

#### Spain

Phone: +34-91-746-17-30  
[madrid.salesinfo@belden.com](mailto:madrid.salesinfo@belden.com)

#### Sweden

Phone: +46-40-699-88-60  
[INET-sales@belden.com](mailto:INET-sales@belden.com)

#### The Netherlands

Phone: +31-773-878-555  
[venlo.salesinfo@belden.com](mailto:venlo.salesinfo@belden.com)

#### United Arab Emirates

Phone: +971-4-391-0490  
[dubai.salesinfo@belden.com](mailto:dubai.salesinfo@belden.com)

#### United Kingdom

Phone: +44 161 4983749  
[manchester.salesinfo@belden.com](mailto:manchester.salesinfo@belden.com)

### AMERICAS

#### USA

Phone: +1-800-BELDEN1  
(1-800-235-3361)

### ASIA/PACIFIC

#### Singapore

Phone: +65-6879-9800  
[singapore.sales@belden.com](mailto:singapore.sales@belden.com)

#### China

Phone: +86-21-5445-2388  
[China.Marketing@belden.com](mailto:China.Marketing@belden.com)

Belden, Belden Sending All The Right Signals, GarrettCom, Hirschmann, Lumberg Automation, Tofino Security, Tripwire and the Belden logo are trademarks or registered trademarks of Belden Inc. or its affiliated companies in the United States and other jurisdictions. Belden and other parties may also have trademark rights in other terms used herein.