



PROVIZE Explorer

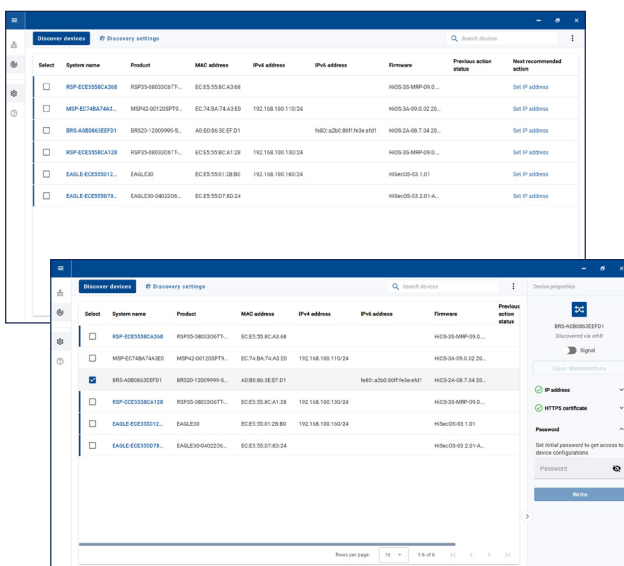
Save Time with Efficient Device Commissioning

PRODUCT BULLETIN




PROVIZE Explorer simplifies device commissioning. The software detects devices that have not yet been commissioned and supports configuration of management IP addresses and credentials. It is seamlessly integrated into the PROVIZE Suite.

- **Access Hirschmann interface** without installing Java libraries on user's PCs.
- **Simplify initial configuration** of IP addresses and credentials via easy-to-use software.
- **Enhance security** by verifying device security certificates and enabling the configuration of initial security device settings.



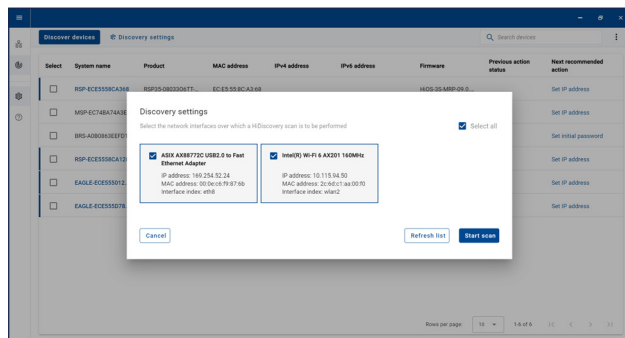
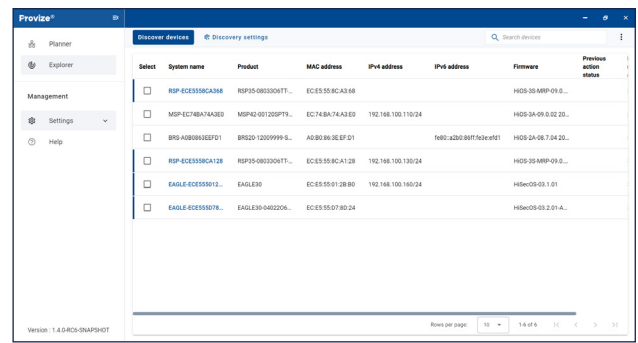
Efficient, secure configuration

- Allows intuitive commissioning of Hirschmann devices.
- Grants easy access to device interfaces.
- Enables instant detection of any not yet commissioned devices.
- Seamlessly integrated into the PROVIZE Suite.
- Available free of charge as a download from our website.

Belden PROVIZE Explorer enables device commissioning by assigning management IP addresses and credentials via an easy-to-use interface. As part of Belden's PROVIZE Suite, PROVIZE Explorer integrates seamlessly with network planning and management. Available free of charge as a download from our website.

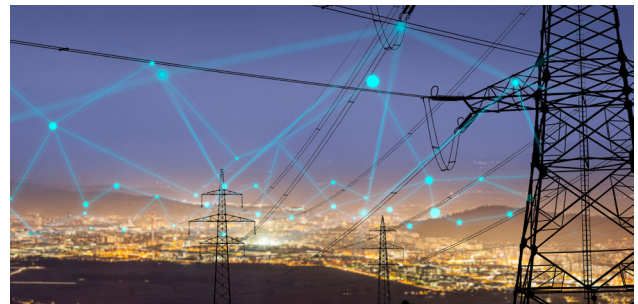
Your Benefits

As digitization and automation expand, the number of devices on networks grows. Belden PROVIDE Explorer streamlines device commissioning by setting management IP addresses and credentials via an easy-to-use interface, saving time and reducing effort. As part of Belden's PROVIDE Suite, PROVIDE Explorer integrates seamlessly with network planning and management.



Markets

PROVIDE Explorer is a commissioning and installation application simplifying the commissioning of Belden products. Companies in any industry, including all segments of manufacturing and energy production, can benefit from PROVIDE Explorer.



Applications

PROVIDE Explorer is necessary to simplify the commissioning of Belden products. As a result, it is relevant across all industrial applications that Belden addresses.

