

Industrial Ethernet Cable Selection Guide

Part No.	No. of Pairs	No. of Conductors	Shielding		Conductor		Installation			Environmental Issues							Bonded Pair	Armor	Industrial Grade Jacket	MICE
			Unshielded	Shielded ₅	Solid	Stranded 55	Installation Stress Resistance††	Pull Tension	Oil Resistance	UV Sunlight Resistance	Weld-Splatter Resistance	CMX/Outdoor	Underground (burial)	Gasoline Resistance	LSZH	P-MSHA▶				
Category 6A Cable																				
IEA001	4		•		•		•	40	•	•							•		Heavy	M ₂ ,L ₁ C ₃ E ₂
IEA002	4			•	•		•	40	•	•							•		Heavy	M ₃ ,L ₁ C ₃ E ₃
IEA003	4		•		•		•	40	•	•					•		•		Heavy	M ₂ ,L ₁ C ₄ E ₂
Category 6 Cable																				
7927A	4		•		•		•	45	•	•							•		Heavy	M ₂ ,L ₁ C ₃ E ₂
7940A EtherNet/IP	4		•		•		•	40	•	•		•					•		Heavy	M ₂ ,L ₁ C ₃ E ₂
7931A	4		•		•		•	40	•	•				•			•		Heavy	M ₂ ,L ₁ C ₄ E ₂
7953A EtherNet/IP	4		•		•		•	40	•	•		•				•	•		Upjacket	M ₃ ,L ₁ C ₃ E ₃
11872A	4		•		•		•	45									•		Upjacket	M ₃ ,L ₁ C ₂ E ₂
121872A	4		•		•		•	200		•							•	•	Armored	M ₃ ,L ₁ C ₃ E ₂
Category 5e Cable																				
7932A EtherNet/IP	2		•		•		•	20	•	•							•		Heavy	M ₂ ,L ₁ C ₃ E ₂
7933A EtherNet/IP	2			•	•		•	20	•	•							•		Heavy	M ₂ ,L ₁ C ₃ E ₃
7918A	4		•		•		•	35	•	•		•				•			Heavy	M ₂ ,L ₁ C ₃ E ₂
7923A EtherNet/IP	4		•		•		•	40	•	•		•				•	•		Heavy	M ₂ ,L ₁ C ₃ E ₂
7919A	4			•	•		•	25	•	•		•				•			Heavy	M ₂ ,L ₁ C ₃ E ₃
7929A	4			•	•		•	40	•	•		•				•			Heavy	M ₂ ,L ₁ C ₃ E ₃
7922A PLTC	4		•		•		•	40	•	•		•					•		Heavy	M ₂ ,L ₁ C ₂ E ₂
7903A PLTC EtherNet/IP	4			•	•		•	40	•	•							•		Heavy	M ₂ ,L ₁ C ₃ E ₃
7928A EtherNet/IP	4		•		•		•	40	•	•					•		•		Heavy	M ₂ ,L ₁ C ₄ E ₂
7930A	4		•		•		•	25	•	•		•							Heavy	M ₂ ,L ₁ C ₃ E ₂
7924A	4		•		•		•	40	•	•		•					•		Heavy	M ₂ ,L ₁ C ₃ E ₂
7921A EtherNet/IP	4			•	•		•	75	•	•		•					•		Heavy	M ₃ ,L ₁ C ₃ E ₃
7939A	4			•	•		•	40	•	•		•					•		Heavy	M ₂ ,L ₁ C ₃ E ₃
7905A	4		•		•		•	40	•	•	•						•		Heavy	M ₂ ,L ₁ C ₃ E ₂
7934A EtherNet/IP	4		•		•		•	40	•	•				•			•		Heavy	M ₂ ,L ₁ C ₃ E ₂
7937A	4			•	•		•	40	•	•				•			•		Upjacket	M ₃ ,L ₁ C ₃ E ₃
7935A EtherNet/IP	4		•		•		•	40	•	•				•			•		Heavy	M ₂ ,L ₁ C ₂ E ₂
7936A	4			•	•		•	40		•				•			•		Heavy	M ₂ ,L ₁ C ₂ E ₃
7957A EtherNet/IP	4			•	•		•	75	•	•		•				•	•		Heavy	M ₃ ,L ₁ C ₃ E ₃
7958A EtherNet/IP	4			•	•		•	35	•	•		•		•		•	•		Heavy	M ₂ ,L ₁ C ₃ E ₃
7938A High Flex	4			•	•		•	40	•	•	•						•		Upjacket	M ₃ ,L ₁ C ₃ E ₃
11700A EtherNet/IP	4		•		•		•	40	•	•		•				•	•		Upjacket	M ₃ ,L ₁ C ₃ E ₂
11700A2 Oil Res I&II	4		•		•		•	40	•	•							•		Upjacket	M ₃ ,L ₁ C ₃ E ₂
121700A	4		•		•		•	40	•	•							•	•	Armored	M ₃ ,L ₁ C ₃ E ₂
121700R	4		•		•		•	40	•	•							•	•	Armored	M ₃ ,L ₁ C ₃ E ₂
127903A PLTC EtherNet/IP	4			•	•		•	40	•	•							•		Armored	M ₃ ,L ₁ C ₃ E ₃
Category 5e Cables/PROFINET																				
7960A Type A PROFINET	4		•		•		•	55	•	•		•							Heavy	M ₃ ,L ₁ C ₃ E ₃
7961A Type B PROFINET	4			•	•		•	55	•	•		•							Heavy	M ₃ ,L ₁ C ₃ E ₃
7962A Type C PROFINET	4		•		•		•	55	•	•	•	•							Heavy	M ₃ ,L ₁ C ₃ E ₃

▲ Shielded products are recommended for high-noise environments.
 ▲▲ Stranded products are recommended where more flexibility is needed.
 †† Products with Bonded-Pair technology provide Installable Performance® advantages – refer to Belden's Bonded-Pair Cable Bulletin #BP02
 ▶ Pennsylvania Department of Environmental Resources and United States Mine Safety and Health Administration Certification
 ● MICE stands for Mechanical, Ingress, Climatic, and Electrical
 I, stands for N/A because Ingress rating applies to assemblies, it does not apply to cable by itself.
 Disclaimer: MICE is an attribute for the application environment, the specifics of an environment can make a difference in cable performance. This rating is based on typical industrial environment.
 They are rated in level 1-Office, 2-Light Industrial, 3-Heavy Industrial, and X-Extra Protection above and beyond level 3

Choose the Right Belden Industrial REVConnect Part for Your Cable

+ **Compatible with** 22-24 AWG Ethernet Cat5E, 6 and 6A cables

+ **Can be exposed to** oil, extreme temperatures, some corrosive gas and vibration with UL94 V-0 materials, EMI protection and E2/E3 ratings

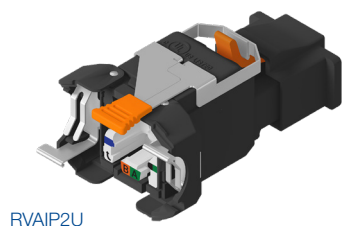
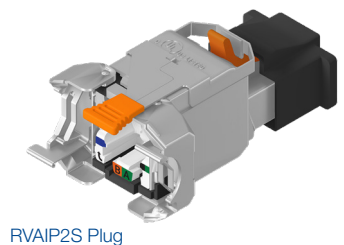
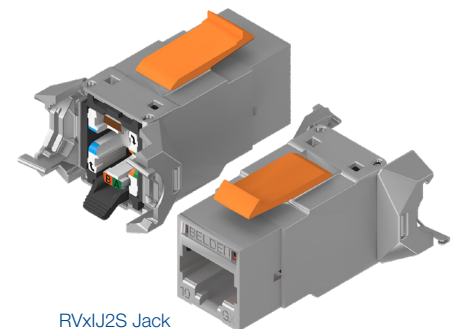
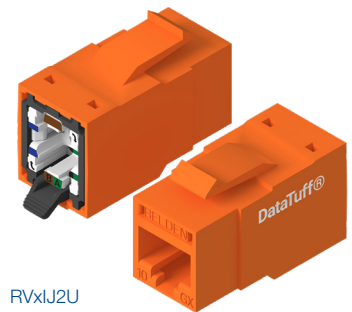
+ **IP20-rated design** for enclosed racks and cabinets in industrial settings

Compatible Cable	RVxIJ2U	RVxIJ2S & RVAIP2S	RVAIP2U
7958A	●	●	●
7957A	●	●	
7953ZH	●	●	
7953T	●	●	
7953A	●	●	
7940T	●	●	●
7940A	●	●	●
7939A	●	●	●
7938A	●	●	●
7937A	●	●	●
7936A	●	●	●
7935A	●	●	●
7934A	●	●	●
7932A	●	●	●
7931A	●	●	●
7930A	●	●	●
7929A	●	●	●
7927A	●	●	●
7924A	●	●	●
7923A	●	●	●
7922A	●	●	●
7921A	●	●	●
7919A	●	●	●
7905A	●	●	●
7903A	●	●	●
74001PU	●	●	●
74001NH	●	●	●
74001E	●	●	●
737953A	●	●	
737929A	●	●	●
727953A	●	●	
727936A	●	●	●
727935A	●	●	●
721700A	●	●	●

Compatible Cable	RVxIJ2U	RVxIJ2S & RVAIP2S	RVAIP2U
72001PU	●	●	●
72001NH	●	●	●
72001E	●	●	●
327929A	●	●	●
187923A	●	●	●
187922A	●	●	●
137953A	●	●	
137929A	●	●	●
131702A	●	●	
131700R	●	●	●
127958A	●	●	
127957A	●	●	
127953A	●	●	
127940A	●	●	●
127939A	●	●	●
127937A	●	●	●
127936A	●	●	●
127934A	●	●	●
127931A	●	●	●
127929A	●	●	●
127922A	●	●	●
127921A	●	●	
127919A	●	●	●
127903A	●	●	
121872A	●	●	
121700R	●	●	●
121700A	●	●	●
11872A	●	●	●
11700A2	●	●	●
11700A	●	●	●
721872A	●	●	
121701A	●	●	●
181872A	●	●	
321872A	●	●	
1702A	●		●

These connectors offer numerous benefits including:

- Ensuring network reliability
- Saving critical time in the field with faster troubleshooting and cable termination capabilities, especially on bonded-pair cables
- Ability to withstand harsh industrial elements including noise, vibration and extreme operating temperatures of -40°C to +70°C



To see cable termination guides for each cable type, please go to [belden.com/industrial-revconnect](https://www.belden.com/industrial-revconnect)