

Industrial HiVision

Network management software

Product Bulletin



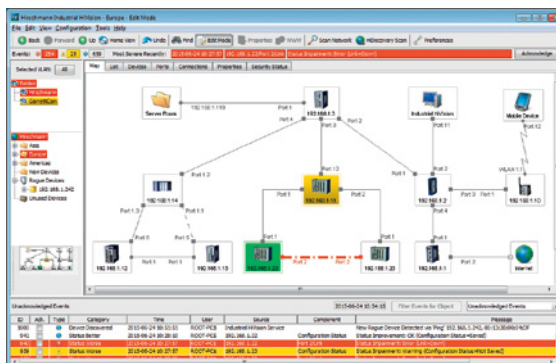
With Industrial HiVision from Hirschmann, you configure and monitor Ethernet networks. This enhances the productivity, security and availability of your network - paving the way to a safer, smarter, and more successful future.

- **Simple management of your network infrastructure:** Identify, visualize, and configure all SNMP-enabled devices from any manufacturer and latest Hirschmann products.
- **Optimized licensing:** An improved licensing option generates a digital certificate with the registration code (Entitlement ID) for faster software access.
- **Visual real-time dashboards:** By integrating with InfluxDB® and Grafana® you can create custom dashboards that display your network in real-time.
- **Enhanced security:** Automatic troubleshooting enables faster problem resolution and provides improved granularity in user permissions.
- **Free trial version:** Experience the benefits of the software before purchasing with a free, unlimited trial version.

Industrial HiVision, developed by Hirschmann, is a reliable network management software tailored for industrial networks. It provides tools for managing and monitoring network devices which help reduce errors and simplify deployment and device replacement. Additionally, it enhances network availability, energy efficiency and security.

Benefits at a glance

- Setup wizard makes implementation and configuration easy
- Enhanced access rights to improve security
- Zero Touch Device Replacement configuration for easy exchange of Hirschmann switches
- Scalable system with hierarchical structure
- Auto-scheduled device configuration backup
- PoE wizard for power optimization
- Alerts for unauthorized system changes
- Network security lockdown feature
- Comprehensive documentation for asset management
- LDAP or RADIUS user authentication with audit trail of user action history
- Simultaneous software updates for multiple devices
- Event forwarding to Syslog server
- TSN configuration for Hirschmann switches



Unlock the power of Industrial HiVision by using a fully functional, free-of-charge 16 node version for as long as you like.

Download the software today from www.belden.com/resources/hivision-promotion-license. When it's time to deploy, know that only the server application is licensed. The client software is free.

Efficient network management for a smarter future



Ethernet networks grow and change quickly, making them increasingly difficult to manage and secure. Belden continuously invests in research and development to create advanced network and data solutions. Industrial HiVision was designed for automation networks and has been field-tested at thousands of facilities. A streamlined licensing option generates registration codes automatically to expedite deployment.

Industrial HiVision integrates the latest Hirschmann products and all SNMP-enabled devices such as switches, PLCs, I/O modules and HMI panels from multiple vendors into a single network management application. The network topology is automatically recognized, displaying all network nodes and links accurately on screen including unmanaged switches and hubs.

With the enhanced MultiConfig feature, you can simultaneously configure hundreds of devices even while they are in operation. Benefit from improved usability with new dialogs and parameters from the latest Hirschmann HiOS firmware. MultiConfig simplifies the installation of Hirschmann replacement devices in the field, reducing manual effort, saving time and ensuring consistent network configuration.

Integration with existing tools like InfluxDB and Grafana allows you to capture and analyze plant and network data across different systems and sensors, uniting it all within a highly visual and customizable dashboard. With a single view of performance data and thresholds, network administrators can address status changes before they result in network downtime.

Applications

As industrial networks become larger and more complex, it's critical to map and supervise the network devices. Industrial HiVision can be used wherever networks have high availability, power and security requirements. The software requires no special IT or engineering knowledge and its wizard guides you systematically through the network management set-up process.

Industrial HiVision supports these types of applications:

- Large networks with devices from various third-party manufacturers
- Networks with many parameters per device or manufacturer-specific device parameters
- Critical industrial networks which require full management
- Edge networks which require performance and status visualization

Markets

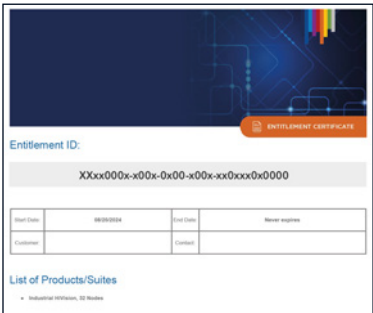
Industrial HiVision is ideal for use in various industrial settings that require network monitoring. These include:

- Energy and Utilities
- Transportation
- Water and Wastewater Management
- Factory Automation
- Consumer Packaged Goods
- Oil and Gas
- Renewable Energy
- Machinery Manufacturing
- Mining



New licensing option and respective part numbers

Industrial HiVision version 8.6.00 introduces a new option, offering a faster process for users to get and activate licenses. We recommend that new customers use these new licenses and part numbers.



License	Order No.	Nodes (IP addresses)
Belden	942 351-032	Industrial HiVision, 32 Nodes, 32 Nodes
Belden	942 351-064	Industrial HiVision, 32 Nodes, 64 Nodes
Belden	942 351-128	Industrial HiVision, 32 Nodes, 128 Nodes
Belden	942 351-256	Industrial HiVision, 32 Nodes, 256 Nodes
Belden	942 351-512	Industrial HiVision, 32 Nodes, 512 Nodes
Belden	942 351-124	Industrial HiVision, 32 Nodes, 1024 Nodes
Belden	942 351-248	Industrial HiVision, 32 Nodes, 2048 Nodes
Belden	942 351-496	Industrial HiVision, 32 Nodes, 4096 Nodes

When acquiring a new Belden licensing part number, customers will receive a digital certificate by email automatically, including the registration code (Entitlement ID) to expedite deployment.

New licensing option for Annual Maintenance Plan

The Hirschmann Annual Maintenance Plan delivers cost-effective updates with the new licensing option. It saves up to 60% compared to the purchase of one-time updates. All customers who elect to upgrade their installations to Industrial HiVision 8.6 or higher must use these new licensing part numbers for the Annual Maintenance Plan.

License	Order No.	Nodes (IP addresses)
Belden	942 350-032	Annual Maintenance Plan for Industrial HiVision, 32 Nodes
Belden	942 350-064	Annual Maintenance Plan for Industrial HiVision, 64 Nodes
Belden	942 350-128	Annual Maintenance Plan for Industrial HiVision, 128 Nodes
Belden	942 350-256	Annual Maintenance Plan for Industrial HiVision, 256 Nodes
Belden	942 350-512	Annual Maintenance Plan for Industrial HiVision, 512 Nodes
Belden	942 350-124	Annual Maintenance Plan for Industrial HiVision, 1024 Nodes
Belden	942 350-248	Annual Maintenance Plan for Industrial HiVision, 2048 Nodes
Belden	942 350-496	Annual Maintenance Plan for Industrial HiVision, 4096 Nodes

Existing Hirschmann part numbers

Current customers using Industrial HiVision version 8.5 or lower keep the previous part numbers and license model. Previous part numbers are recommended to existing customers who don't elect to upgrade to Industrial HiVision 8.6 and want to add more nodes.

License	Order No.	Nodes (IP addresses)
Hirschmann	943 156-032	Industrial HiVision, 32 Nodes
Hirschmann	943 156-064	Industrial HiVision, 64 Nodes
Hirschmann	943 156-128	Industrial HiVision, 128 Nodes
Hirschmann	943 156-256	Industrial HiVision, 256 Nodes
Hirschmann	943 156-512	Industrial HiVision, 512 Nodes
Hirschmann	943 156-124	Industrial HiVision, 1024 Nodes
Hirschmann	943 156-248	Industrial HiVision, 2048 Nodes
Hirschmann	943 156-496	Industrial HiVision, 4096 Nodes



© 2025 | Belden and its affiliated companies claim and reserves all rights to its graphic images and text, trade names and trademarks, logos, service names, and similar proprietary marks, and any other intellectual property rights associated with this publication. BELDEN® and other distinctive identifiers of Belden and its affiliated companies as used herein are or may be pending or registered or unregistered trademarks of Belden, or its affiliates, in the United States and/or other jurisdictions throughout the world. Belden's trade names, trademarks, logos, service names, and similar proprietary marks shall not be reprinted or displayed without Belden's or its affiliated companies' permission and/or in any form inconsistent with Belden's business interests. Belden reserves the right to demand the discontinuation of any improper use at any time.