

Standard Cabinets & Racks

Product Guide



TABLE OF CONTENTS

- 1. ACTIVE CABINETS** _____ **3**
 - a. ThermalPro® All-In-One Node/Fiber Distribution Cabinets _____ 4
 - b. ThermalPro® Access Outdoor Equipment Cabinets _____ 5
 - c. ThermalPro® Access Outdoor Equipment Cabinets _____ 6
 - d. ThermalPro® Expanded Outdoor Equipment Cabinets _____ 7
 - e. Modlar Cabinets _____ 7

- 2. PASSIVE CABINETS** _____ **8**
 - a. Mini-FDC 12 Fiber Distribution Cabinet _____ 8
 - B. Network Utility Enclosures _____ 9
 - b. FTTx Outdoor Series Splice & Play Cabinets _____ 10

- 3. INDOOR RACKS AND CABINETS** _____ **11**
 - a. Swing-Frame Wall Mount Cabinets _____ 11
 - b. Open Face 6RU Wall Rack _____ 11
 - c. Adjustable Depth Wall Mount Racks _____ 12
 - d. Horizontal Wall Mount Racks with Optional Dust Cover _____ 12

ACTIVE CABINETS

These active cabinets help reduce site footprint by consolidating equipment into a single enclosure. Available in multiple sizes, they support strand mount nodes while providing efficient heat management. A sealed end bay helps protect fiber optic equipment from dust, moisture, and debris. With a range of pre-integrated fiber options, they are well-suited for a variety of OSP network applications.



Features & Benefits

- Full featured general purpose cabinets
- Wide variety of sizes available
- Telcordia GR-487 compliant
- Broad selection of options to tailor-fit to any application
- Available fully integrated as turn-key solution

Click or Scan



ThermalPro® All-In-One Node/Fiber Distribution Cabinets

Part Number	Dimensions			Node Capacity	End Bay	End Bay Rach Units	Mounting	Load Center	Convenience Outlets	Fan System
	H	W	D							
1051-120A10B6XNFA1	46.2	47.3	25	2	15"D	22RU	Pad	120/240VAC 60A	Duplex NEMA 5-20R & Duplex GFCI	300CFM with Thermostat Control
1051-180A1XB6XNFA1	53.2	47.3	25	4	15"D	26RU				
1051-240A1XB6XNFA1	67.8	47.3	25	6	15"D	35RU				



Features & Benefits

- Full featured general purpose cabinets
- Wide variety of sizes available
- Telecordia GR-487 compliant
- Broad selection of options to tailor-fit to any application
- Available fully integrated as turn-key solution

Click or Scan



ThermalPro® Access Outdoor Equipment Cabinets

Basic Part Numbers	Dimensions			RU EQ Bay(s)	Mounting			60A Load Center	Air Conditioners		Heat Exchangers		Fan
	H	W	D		6" Plinth	14.5" Pedestal	Pole / Wall		2000BTU	4000BTU	25W/F	42W/F	300CFM
1050-13240PA60002	31.5	32.3	24	14			✓	✓	✓				
1050-1324R0A60002	37.5	32.3	24	14	✓			✓	✓				
1050-1324P0A60002	46	32.3	24	14		✓		✓	✓				
1050-1324PPA60002	46	32.3	24	14		✓	✓	✓	✓				
1050-13240PA60025	31.5	32.3	24	14			✓	✓			✓		
1050-1324R0A60025	37.5	32.3	24	14	✓			✓			✓		
1050-1324P0A60025	46	32.3	24	14		✓		✓			✓		
1050-1324PPA60025	46	32.3	24	14		✓	✓	✓			✓		
1050-13240PA600FA	31.5	32.3	24	14			✓	✓					✓
1050-1324R0A600FA	37.5	32.3	24	14	✓			✓					✓
1050-1324P0A600FA	46	32.3	24	14		✓		✓					✓
1050-1324PPA600FA	46	32.3	24	14		✓	✓	✓					✓
1050-17240PA60004	38.5	32.3	24	18			✓	✓		✓			
1050-1724R0A60004	44.5	32.3	24	18	✓			✓		✓			
1050-1724P0A60004	53	32.3	24	18		✓		✓		✓			
1050-1724PPA60004	53	32.3	24	18		✓	✓	✓		✓			
1050-17240PA60042	38.5	32.3	24	18			✓	✓				✓	
1050-1724R0A60042	44.5	32.3	24	18	✓			✓				✓	
1050-1724P0A60042	53	32.3	24	18		✓		✓				✓	
1050-1724PPA60042	53	32.3	24	18		✓	✓	✓				✓	
1050-17240PA600FA	38.5	32.3	24	18			✓	✓					✓
1050-1724R0A600FA	44.5	32.3	24	18	✓			✓					✓
1050-1724P0A600FA	53	32.3	24	18		✓		✓					✓
1050-1724PPA600FA	53	32.3	24	18		✓	✓	✓					✓



Features & Benefits

- Full featured general purpose cabinets
- Wide variety of sizes available
- Telecordia GR-487 compliant
- Broad selection of options to tailor-fit to any application
- Available fully integrated as turn-key solution

Click or Scan



ThermalPro® Access Outdoor Equipment Cabinets

Configured Part Numbers	Dimensions			RU EQ Bay(s)	Mounting		
	H	W	D		6" Plinth	14.5" Pedestal	Pole / Wall
1050-1018R0A00000	23	32.3	18	10	✓		
1050-1018P0A00000	23	32.3	18	10		✓	
1050-1018PPA00000	23	32.3	18	10		✓	✓
1050-10180PA00000	23	32.3	18	10			✓
1050-1324R0A00000	37.5	32.3	24	14	✓		
1050-1324P0A00000	46	32.3	24	14		✓	
1050-1324PPA00000	46	32.3	24	14		✓	✓
1050-13240PA00000	31.5	32.3	24	14			✓
1050-1724R0A00000	44.5	32.3	24	18	✓		
1050-1724P0A00000	53	32.3	24	18		✓	
1050-1724PPA00000	53	32.3	24	18		✓	✓
1050-17240PA00000	38.5	32.3	24	18			✓
1050-2024R0A00000	50	32.3	24	20	✓		
1050-2024P0A00000	58.5	32.3	24	20		✓	
1050-2024PPA00000	58.5	32.3	24	20		✓	✓
1050-20240PA00000	44	32.3	24	20			✓
1050-2324R0A00000	56.5	32.3	24	24	✓		
1050-2324P0A00000	65	32.3	24	24		✓	
1050-2324PPA00000	65	32.3	24	24		✓	✓
1050-23240PA00000	50.5	32.3	24	24			✓
1050-3624R0A00000	76	32.3	24	36	✓		
1050-3624P0A00000	82.5	32.3	24	36		✓	



Features & Benefits

- Full featured and scalable cabinets
- Multiple equipment bays and up to two craft bays
- Telecordia GR-487 compliant
- Broad selection of options to tailor-fit to any application
- Available fully integrated as turn-key solution

Click or Scan



ThermalPro® Expanded Outdoor Equipment Cabinets

Basic Part Numbers	Dimensions			EQ Bays	RU EQ Bay(s)	Battery Pedestal	End Bays (15"D)		
	H	W	D				Left	Right	RU EB
1051-120X1XBXX000	46.2	32.3	25	1	14	✓			n/a
1051-120A1XBXX000	46.2	47.3	25	1	14	✓	✓		22
1051-120A1ABXX000	46.2	62.3	25	1	14	✓	✓	✓	44
1051-120X2XBXX000	46.2	64.5	25	2	28	✓			n/a
1051-120A2XBXX000	46.2	79.5	25	2	28	✓	✓		22
1051-120A2ABXX000	46.2	94.5	25	2	28	✓	✓	✓	44
1051-120X3XBXX000	46.2	96.8	25	3	42	✓			n/a
1051-180X1XBXX000	53.2	32.3	25	1	18	✓			n/a
1051-180A1XBXX000	53.2	47.3	25	1	18	✓	✓		26
1051-180A1ABXX000	53.2	62.3	25	1	18	✓	✓	✓	52
1051-180X2XBXX000	53.2	64.5	25	2	36	✓			n/a
1051-180A2XBXX000	53.2	79.5	25	2	36	✓	✓		26
1051-180A2ABXX000	53.2	94.5	25	2	36	✓	✓	✓	52
1051-180X3XBXX000	53.2	96.8	25	3	54	✓			n/a
1051-240X1XBXX000	67.8	32.3	25	1	26	✓			n/a
1051-240A1XBXX000	67.8	47.3	25	1	26	✓	✓		35
1051-240A1ABXX000	67.8	62.3	25	1	26	✓	✓	✓	70
1051-240X2XBXX000	67.8	64.5	25	2	52	✓			n/a
1051-240A2XBXX000	67.8	79.5	25	2	52	✓	✓		35
1051-240A2ABXX000	67.8	94.5	25	2	52	✓	✓	✓	70

Configured Part Numbers	Dimensions			EQ Bays	RU EQ Bay(s)	Battery Pedestal	End Bays			60A Load Center	Air Conditioners		Heat Exchangers			Fan
	H	W	D				Left	Right	RU EB		2000BTU	4000BTU	25W/F	42W/F	90W/F	
1051-120A1XB6XX021	46.2	47.3	25	1	14	✓	✓		22	✓	✓					
1051-120A1XB6XX251	46.2	47.3	25	1	14	✓	✓		22	✓			✓			
1051-120A1XB6XXFA1	46.2	47.3	25	1	14	✓	✓		22	✓						✓
1051-180A1XB6XX041	53.2	47.3	25	1	18	✓	✓		26	✓		✓				
1051-180A1XB6XX421	53.2	47.3	25	1	18	✓	✓		26	✓				✓		
1051-180A1XB6XXFA1	53.2	47.3	25	1	18	✓	✓		26	✓						✓
1051-240A1XB6XX042	67.8	47.3	25	1	26	✓	✓		35	✓		✓(x2)				
1051-240A1XB6XX901	67.8	47.3	25	1	26	✓	✓		35	✓					✓	
1051-240A1XB6XXFA1	67.8	47.3	25	1	26	✓	✓		35	✓						✓



Features & Benefits

- Full featured general purpose cabinets
- Wide variety of sizes available
- Telecordia GR-487 compliant
- Broad selection of options to tailor-fit to any application
- Available fully integrated as turn-key solution

Click or Scan



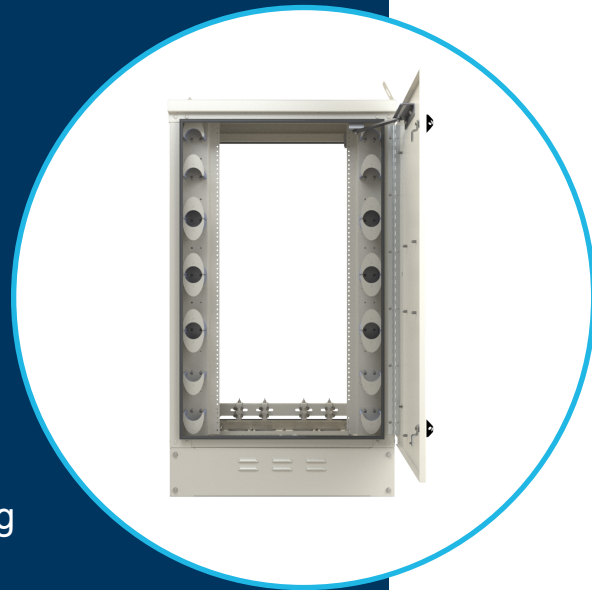
Modular Cabinets

Basic Part Numbers	Dimensions			EQ Bays	RU EQ Bay(s)	End Bays		
	H	W	D			Left End Bay Depth	Right End Bay Depth	RU End Bay(s)
1023-10-X1XXX000	63.8	34.6	40.3	1	46			
1023-11-B1XXX000	63.8	51.6	40.3	1	46	18		32
1023-11-C1XXX000	63.8	57.6	40.3	1	46	24		32
1023-12-B1BXXX000	63.8	68.6	40.3	1	46	18	18	64
1023-12-B1CXXX000	63.8	74.6	40.3	1	46	18	24	64
1023-20-X2XXX000	63.8	67.1	40.3	2	92			
1023-21-B2XXX000	63.8	84.1	40.3	2	92	18		32
1023-21-C2XXX000	63.8	90.1	40.3	2	92	24		32
1023-22-B2BXXX000	63.8	101.1	40.3	2	92	18	18	64
1023-22-B2CXXX000	63.8	107.1	40.3	2	92	18	24	64

Configured Part Numbers	Dimensions			EQ Bays	RU EQ Bay(s)	End Bays			60A Load Center	100A Rectifier System	Air Conditioners	Heat Exchangers
	H	W	D			Left End Bay Depth	Right End Bay Depth	RU End Bay(s)			8000BTU	90W/F
1023-10-X1X6XX081	63.8	34.6	40.3	1	46				✓		✓	
1023-10-X1X6XX901	63.8	34.6	40.3	1	46				✓			✓
1023-11-B1X6XX081	63.8	51.6	40.3	1	46	18		32	✓		✓	
1023-11-B1X6XX901	63.8	51.6	40.3	1	46	18		32	✓			✓
1023-10-X1X631081	63.8	34.6	40.3	1	46				✓	✓	✓	
1023-10-X1X631901	63.8	34.6	40.3	1	46				✓	✓		✓
1023-11-B1X631081	63.8	51.6	40.3	1	46	18		32	✓	✓	✓	
1023-11-B1X631901	63.8	51.6	40.3	1	46	18		32	✓	✓		✓

PASSIVE CABINETS

Passive cabinets provide organized distribution and protection for fiber networks, enabling efficient connectivity at the network edge. Designed for flexibility, they support a range of fiber management components such as splitters, splice trays, and patching solutions. With multiple mounting options and durable, sealed construction, they help simplify deployment while protecting critical fiber infrastructure in a variety of OSP environments.



Features & Benefits

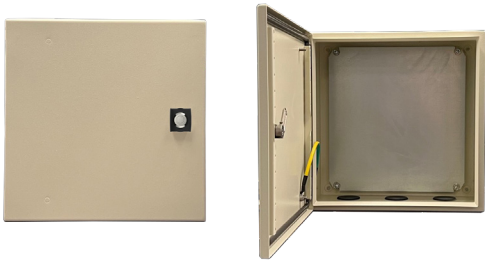
- Splice & Play - reduces install time
- Pole, wall, pedestal and pad mountable
- Flexible configurations with open source splitters
- Pre-stubbed or splice tray versions
- 100% scoped and cleaned in excess of IEC 61300-3-35

Click or Scan



Mini-FDC 12 Fiber Distribution Cabinet

Part Number	Dimensions H x W x D	Type	Feeder Fiber	Distribution Fiber	Distribution Cable Count	Cable Type	Split Ratio	Splitters (1x2)	Splitters (1x32)
1076-12-C128LA-001	26.6 x 11.6 x 10.5	LC/APC	36F	144F	1	OSP SJSA LT	1x32		4
1076-12-C128LA-011	26.6 x 11.6 x 10.5	LC/APC	36F	144F	1	OSP SJSA LT	1x64	2	4
1076-12-C256LA-001	26.6 x 11.6 x 10.5	LC/APC	36F	144F	2	OSP SJSA LT	1x32		8
1076-12-C256LA-020	26.6 x 11.6 x 10.5	LC/APC	36F	144F	2	OSP SJSA LT	1x64	4	8
1076-12-C128SA-001	26.6 x 11.6 x 10.5	SC/APC	36F	144F	1	OSP SJSA LT	1x32		4
1076-12-C128SA-011	26.6 x 11.6 x 10.5	SC/APC	36F	144F	1	OSP SJSA LT	1x64	2	4



Features & Benefits

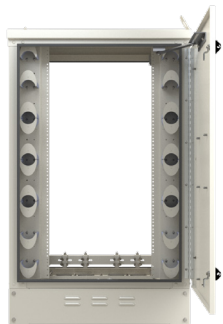
- Indoor / outdoor applications
- NEMA4
- Available in 304 SS or galvanized steel
- Durable powder coat finish
- Wall-mountable with hardware included
- Aluminum (standard) or wood backboard
- Secure - hex latches with padlock hasp (standard) or keyed latches

Click or Scan



Network Utility Enclosures

Part Number	Material	H x W x D (mm)	H x W x D (in)
1091-151508G	Galvanized steel	380 x 380 x 210	15 x 15 x 8.3
1091-201608G	Galvanized steel	500 x 400 x 210	19.7 x 15.7 x 8.3
1091-242408G	Galvanized steel	600 x 600 x 210	23.6 x 23.6 x 8.3
1091-151508S	304 Stainless Steel	380 x 380 x 210	15 x 15 x 8.3
1091-242408S	304 Stainless Steel	500 x 400 x 210	19.7 x 15.7 x 8.3
1091-242408S	304 Stainless Steel	600 x 600 x 210	23.6 x 23.6 x 8.3



Features & Benefits

- Splice & Play - reduces install time and lowers CAPEX
- Fully customizable and tailor-fit to meet your needs
- Open-source and non-proprietary components
- All fiber scoped and cleaned to exceed IEC 61300-3-35
- Sizes to fit any application

Click or Scan

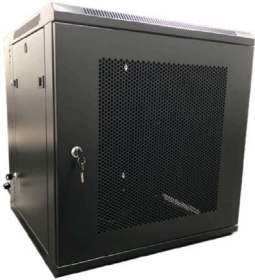


FTTx Outdoor Series Splice & Play Cabinets

Part Number	Dimensions			RU	Type	Feeder Ports	36 Fiber Cable	Distribution Ports	144 Fiber Cables	Cable Type	LGX Positions	Splitters (1x32)
	H	W	D									
1072-14-SLBA1AX	34.7	30	18	14	SC/APC	48	1	144	1	OSP SJSAL T	14 Full / 27 Half	n/a
1072-14-SLBA1AE1	34.7	30	18	14	SC/APC	48	1	144	1	OSP SJSAL T	14 Full / 27 Half	1
1072-14-SLBA1AE2	34.7	30	18	14	SC/APC	48	1	144	1	OSP SJSAL T	14 Full / 27 Half	2
1072-14-SLBA1AE3	34.7	30	18	14	SC/APC	48	1	144	1	OSP SJSAL T	14 Full / 27 Half	3
1072-14-SLBA1AE4	34.7	30	18	14	SC/APC	48	1	144	1	OSP SJSAL T	14 Full / 27 Half	4
1072-14-SLBA2AX	34.7	30	18	14	SC/APC	48	1	288	2	OSP SJSAL T	14 Full / 27 Half	n/a
1072-14-SLBA2AE1	34.7	30	18	14	SC/APC	48	1	288	2	OSP SJSAL T	14 Full / 27 Half	1
1072-14-SLBA2AE2	34.7	30	18	14	SC/APC	48	1	288	2	OSP SJSAL T	14 Full / 27 Half	2
1072-14-SLBA2AE3	34.7	30	18	14	SC/APC	48	1	288	2	OSP SJSAL T	14 Full / 27 Half	3
1072-14-SLBA2AE4	34.7	30	18	14	SC/APC	48	1	288	2	OSP SJSAL T	14 Full / 27 Half	4
1072-14-SLBA2AE5	34.7	30	18	14	SC/APC	48	1	288	2	OSP SJSAL T	14 Full / 27 Half	5
1072-14-SLBA2AE6	34.7	30	18	14	SC/APC	48	1	288	2	OSP SJSAL T	14 Full / 27 Half	6
1072-14-SLBA2AE7	34.7	30	18	14	SC/APC	48	1	288	2	OSP SJSAL T	14 Full / 27 Half	7
1072-14-SLBA2AE8	34.7	30	18	14	SC/APC	48	1	288	2	OSP SJSAL T	14 Full / 27 Half	8
1072-14-SLBA2AE9	34.7	30	18	14	SC/APC	48	1	288	2	OSP SJSAL T	14 Full / 27 Half	9
1072-18-SLBA2AX	41.7	30	18	18	SC/APC	48	1	288	2	OSP SJSAL T	14 Full / 27 Half	n/a
1072-18-SLBA3AX	41.7	30	18	18	SC/APC	48	1	432	3	OSP SJSAL T	14 Full / 27 Half	n/a
1072-22-SLBA2AX	48.7	30	18	22	SC/APC	48	1	288	2	OSP SJSAL T	14 Full / 27 Half	n/a
1072-22-SLBA3AX	48.7	30	18	22	SC/APC	48	1	432	3	OSP SJSAL T	14 Full / 27 Half	n/a
1072-22-SLBA4AX	48.7	30	18	22	SC/APC	48	1	576	4	OSP SJSAL T	14 Full / 27 Half	n/a
1072-26-SLBA3AX	55.7	30	18	26	SC/APC	48	1	432	3	OSP SJSAL T	14 Full / 27 Half	n/a
1072-26-SLBA4AX	55.7	30	18	26	SC/APC	48	1	576	4	OSP SJSAL T	14 Full / 27 Half	n/a
1072-26-SLBA5AX	55.7	30	18	26	SC/APC	48	1	728	5	OSP SJSAL T	14 Full / 27 Half	n/a
1072-30-SLBA6AX	62.7	30	18	30	SC/APC	48	1	864	6	OSP SJSAL T	14 Full / 27 Half	n/a

INDOOR RACKS AND CABINETS

Passive cabinets provide organized distribution and protection for fiber networks, enabling efficient connectivity at the network edge. Designed for flexibility, they support a range of fiber management components such as splitters, splice trays, and patching solutions. With multiple mounting options and durable, sealed construction, they help simplify deployment while protecting critical fiber infrastructure in a variety of OSP environments.



Features & Benefits

- Variety of sizes available
- Cabinet body on hinges for swing-out access to rear of equipment
- Multiple cable knockouts on top and bottom of cabinet and rear panel

Click or Scan



Swing-Frame Wall Mount Cabinets

Part Number	Rack Units	Dimensions (in)	Dimensions (mm)
2310-GMB6606-001	6RU	14.5 x 23.6 x 23.6	368 x 600 x 600
2310-GMB6612-001	12RU	25.0 x 23.6 x 23.6	635 x 600 x 600
2310-GMB6624-001	24RU	46.0 x 23.6 x 23.6	1169 x 600 x 600



Features & Benefits

- 6RU 19" equipment mounting
- 100lb weight capacity
- Wall mount with keyhole slots at 16" center
- Tie wrap and velcro slots for wire management
- Includes lag screws and #12-24 equipment mounting hardware

Click or Scan



Open Face 6RU Wall Rack

Part Number	Description	Rack Units	Rack Width	H x W x D (mm)	H x W x D (in)
2310-049-006-001	RACK WALL MNT 19" 6RU OPEN FACE	6RU	19"	267 x 489 x 435	10.5 x 19.25 x 17.12



Features & Benefits

- Extendable depth from 12" to 24" at 1" increments
- Standard 19" rack spacing with 12-24 threaded holes
- Simple assembly with only Phillips screw driver and 7/16" wrench
- Stability offered by angled supports that bolt directly into the frame, ensuring strength without protruding beyond the structure
- Durable powder coat finish

Click or Scan



Adjustable Depth Wall Mount Racks

Part Number	Description	Rack Units	Rack Width	H x W x D (mm)	H x W x D (in)
2310-049-016-001	KIT INDOOR RACK WALL MOUNT, 16 RU	16RU	19"	823 x 607 x 305-610	32.4 x 23.9 x 12-24
2310-049-024-001	KIT INDOOR RACK WALL MOUNT, 24 RU	24RU	19"	1180 x 607 x 305-610	46.4 x 23.9 x 12-24
2310-049-0824-001	KIT INDOOR RACK WALL MOUNT, 8RU, 16RU, 24RU	8/16/24RU	19"	467 / 823 / 1199 x 607 x 305-610	18.4 / 32.4 / 48.2 x 23.9 x 12-24



Features & Benefits

- Fold up cover to prevent dust and debris
- Cover allows for 4" clearance from face of equipment
- 19" 3RU or 6RU rack for vertically mounted equipment
- Cover can lock in place at open or closed position
- Durable powder coat finish
- Wall-mount hardware included

Click or Scan



Horizontal Wall Mount Racks with Optional Dust Cover

Part Number	Description	Rack Units	Rack Width	H x W x D (mm)	H x W x D (in)
2310-049-H06-001	6RU Horizontal Rack(w/o Cover)	6RU	19"	152 x 516 x 373	6.0 x 20.3 x 14.7
2310-049-H06-002	6RU Horizontal Rack with Cover	6RU	19"	257 x 561 x 381	10.1 x 22.1 x 15.0
2310-049-H06-CVR	Dust cover for 6RU Horizontal Rack	n/a	n/a	180 x 561 x 376	7.1 x 22.1 x 14.8
2310-049-H03-001	3RU Horizontal Rack(w/o Cover)	3RU	19"	152 x 516 x 239	6.0 x 20.3 x 9.4
2310-049-H03-002	3RU Horizontal Rack with Cover	3RU	19"	257 x 561 x 246	10.1 x 22.1 x 9.7
2310-049-H03-CVR	Dust cover for 3RU Horizontal Rack	n/a	n/a	180 x 561 x 241	7.1 x 22.1 x 9.5



r1_04152026